

Wild Earth Travel

Small Ships, Big Adventures

wildearth-travel.com

info@wildearth-travel.com

CROSSING 66° SOUTH LATITUDE - ANTARCTIC CIRCLE EXPEDITION

Experience the essence of Antarctica: a white wilderness of spectacular icescapes, obliging marine wildlife, scenic narrow channels, and panoptic penguin colonies. The Antarctic Peninsula is the pinnacle of Polar. You may think adventure is only for the young, the super athletic, or the bold risk-takers of the world. But regardless of your background and age, Antarctica will fill you with the spirit of adventure. Once you see it, you will be swept up in the desire to make the most of every precious second you spend in this amazing place. You may not want to sleep at all while you're here, preferring instead to live your waking Antarctic dreams. You may wonder what eyes were ever meant for, if not for absorbing the splendor of Antarctica and its incredible wildlife. You'll surely want to capture every snowflake and penguin pose, not only with your camera, but with your eternal memory so that you may carry them everywhere. The spirit of Antarctic adventure may manifest in different ways. You may want to get physical by taking to its icy waters in a sea kayak. You may want to test your endurance by spending a night in a tent on its icy surface. You may simply want to breathe it all in so deeply that it becomes part of you. No matter how you answer the call of Antarctica, you will be changed forever. That is real adventure.



ITINERARY

Day 1: Arrival in Ushuaia, Argentina (hotel night)

Welcome to Ushuaia, the world's southernmost city and starting point of our Antarctic expedition! Upon your arrival at the airport, you will be greeted by our staff and transferred to a quality hotel, which has been arranged by us and is included in the price of the itinerary. For the rest of the day, you are free to explore this vibrant port city and adventure hub. For an introduction to local history and wildlife, the interesting Museo del Fin del Mundo is worth a visit. If

Wild Earth Travel

Small Ships, Big Adventures

0800 945 3327 (within New Zealand) | +64 (0) 3 365 1355 | 1800 107 715 (within Australia)

info@wildearth-travel.com | wildearth-travel.com



Wild Earth Travel

Small Ships, Big Adventures



wildearth-travel.com

info@wildearth-travel.com

you have time to spare, a variety of nature activities can be arranged to suit all interests and fitness levels, from hiking in nearby Tierra del Fuego National Park to wildlife viewing in the Beagle Channel. For dinner, Ushuaia offers a wide range of restaurants featuring Patagonian lamb and delectable Fuegian seafood.

Day 2: Welcome Aboard!

After breakfast at your hotel, the morning is yours to enjoy Ushuaia. Explore the delightful waterfront and savor views of the snowcapped Martial Range, the southernmost peaks of the Andes. Take advantage of shopping for souvenirs or some last-minute necessities such as cold-weather gear. Just remember, you will soon receive your very own parka to keep and waterproof boots to borrow on board the ship. For lunch, the many cafes, parrillas and gelato shops on Avenida San Martin will be sure to satisfy any appetite. In the afternoon, you will be transferred to the pier where we will warmly welcome you aboard the luxury expedition vessel M/V Sea Spirit. Get settled in your spacious suite and explore the ship that will be your comfortable home during the extraordinary adventure to come. After getting underway, a full schedule of events kicks off with informative briefings and introductions from your expedition staff. After the first of many delicious dinners on board, step out onto the open decks to admire the scenery and gorgeous evening light as we pass through the Beagle Channel.

Day 3-4: Across the Drake Passage

After passing the islands of Tierra del Fuego, we turn south to begin our crossing of the Drake Passage. We watch for humpback and fin whales along the way. The majestic wandering albatross and other graceful subantarctic seabirds are common in these waters and can readily be viewed from panoramic open decks and balconies. We also cross the Antarctic Convergence, the biological boundary of the Southern Ocean. The ship's stabilizing fins provide comfort in the event of rough seas. Briefings, bio-security procedures and presentations by our lecture staff prepare you for our arrival in Antarctica. We hope to arrive in the South Shetland Islands on the evening of our second day at sea.

Day 5-12: South Shetland Islands and Antarctic Peninsula

During the next eight days, we undertake an in-depth exploration of the South

Shetland Islands and the Antarctic Peninsula. This region contains some of the world's most impressive scenery and the best wildlife viewing in Antarctica. Sheltered bays and channels sparkle with ice and reflect towering mountain peaks coated in permanent snow and immense glaciers. Icebergs of every size and description complete an image of incomparable beauty. Waters rich with krill are home to huge numbers of marine mammals and seabirds. The whole area is alive with penguins foraging at sea and forming large rookeries at special places on land. Here we also find Antarctic research bases of various nationalities, some with gift shops and post offices. The South Shetland Islands are the northernmost islands in Antarctica and will likely be our first area of exploration. This wildly beautiful island chain contains many landing sites with historical significance and abundant wildlife. We will also explore the supremely picturesque Gerlache Strait area of the Antarctic Peninsula, a pristine wilderness of spectacular white landscapes, colossal icebergs, obliging marine mammals and bustling penguin colonies. We plan to pass through the famous Lemaire Channel, also known as "Kodak Gap" because of the photogenic way the narrow channel reflects the image of sheer snowy mountains. On this special voyage, we have additional days devoted to pushing even farther south in our attempt to cross the Antarctic Circle. The sublime icescapes in Crystal Sound and beyond are particularly austere, the weather is especially wild, and the waters are full of constantly shifting ice. Very few people have ventured this far south. This is a true expedition. Throughout the islands and on the mainland, we find nesting colonies of gentoo, chinstrap and Adelie penguins, sometimes side by side. It is a dramatic time at the colonies. While some parents remain at the nest to guard against skua attack, others go fishing in seas patrolled by predatory leopard seals and killer whales. Meanwhile, fluffy chicks are starting to explore away from their nests. Also at this time, humpback and minke whales have arrived in great numbers and the feeding frenzy is in full swing. Crabeater and Weddell seals abound in these highly productive waters. In this rugged yet accessible environment, superb wildlife viewing is best complemented by active adventure. Our knowledgeable guides will offer hiking and hill climbing for an even greater perspective of this raw polar wilderness. For sea kayakers, the wildlife-rich waters of Antarctica offer many chances to paddle with seals and penguins in some of the world's most scenic waterways. To make the most of your time on the White Continent, you can also spend a night camping ashore, surrounded by untamed Antarctic nature. This is expedition cruising at its most authentic. Our precise route and exploration opportunities will be shaped by weather and ice. Our experienced captain and expedition leader will continually adjust plans to take maximum advantage of the conditions in this challenging polar environment. With over 17 hours of daylight per day, we seize every opportunity to experience excellent wildlife viewing and amazing scenery on shore excursions and Zodiac cruises.

Day 13-14: Back across the Drake Passage

Wild Earth Travel

Small Ships, Big Adventures

0800 945 3327 (within New Zealand) | +64 (0) 3 365 1355 | 1800 107 715 (within Australia)

info@wildearth-travel.com | wildearth-travel.com



Wild Earth Travel

Small Ships, Big Adventures



wildearth-travel.com

info@wildearth-travel.com

It is now time to head back across the Drake Passage toward South America, but the adventure is not quite over. Seabirds are our constant companions and there is always the possibility of whale encounters in these wild waters. This is also the time for festivities such as the Captain's Farewell Cocktail and the end-of-voyage slideshow. Finally, as we enter the calm Beagle Channel, we enjoy a night of smooth sailing toward Ushuaia.

Day 15: Disembarkation in Ushuaia, Argentina

After yet another delicious breakfast on board, we bid you a fond farewell in Ushuaia. We provide a group transfer to the airport or to the city center if you wish to spend more time here. As you look back on your wonderful experience in Antarctica, you may already be looking forward to your next polar adventure!

Please Note:

Itinerary, landings and all other activities during the cruise depend strongly on ice and weather conditions and are subject to the decisions of the Expedition Leader and the Captain of the vessel. Encounters with any mentioned wildlife cannot be guaranteed.



Wild Earth Travel

Small Ships, Big Adventures

0800 945 3327 (within New Zealand) | +64 (0) 3 365 1355 | 1800 107 715 (within Australia)

info@wildearth-travel.com | wildearth-travel.com

Wild Earth Travel

Small Ships, Big Adventures



wildearth-travel.com

info@wildearth-travel.com

YOUR SHIP: SEA SPIRIT

YOUR SHIP:	Sea Spirit
VESSEL TYPE:	Small Ship Expedition
LENGTH:	90 metres
PASSENGER CAPACITY:	114
BUILT/REFURBISHED:	1992 / 2017

Like some of the birds we see in the Arctic and Antarctica, our m/v Sea Spirit is migratory and follows the sun, northbound in the summer and southbound in the winter, always ready for spontaneous discoveries - a pod of whales, a family of polar bears or a glaciated mountain vista. She is highly maneuverable and capable of navigating the narrow fjords of East Greenland and entering the small bays of Spitsbergen.

Onboard, we create a friendly and welcoming atmosphere for all our guests. They are united by one goal - to have a memorable wilderness experience and to become real polar adventurers. We believe that first-hand travel to such places makes one an ambassador for conservation, and helps strengthen our resolve to protect these natural environments for future generations.

Public areas include: Reception, Restaurant, Bar, Outdoor Bistro, Club Lounge, Library, Presentation Lounge, Infirmary, Gym, Bridge.

We have open Bridge policy. Talk to the Captain and officers. Watch landscapes from this special angle of view. Fix your location at a map of your expedition.



Wild Earth Travel

Small Ships, Big Adventures

0800 945 3327 (within New Zealand) | +64 (0) 3 365 1355 | 1800 107 715 (within Australia)

info@wildearth-travel.com | wildearth-travel.com

Wild Earth Travel

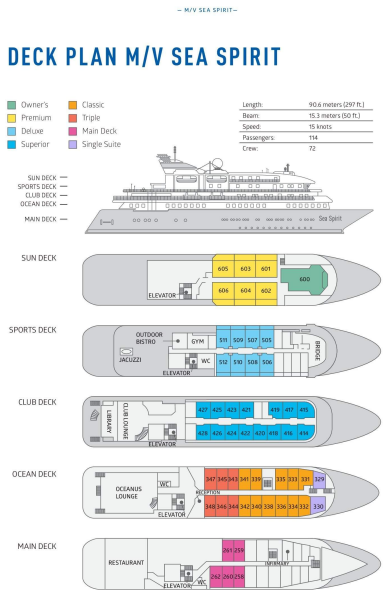
Small Ships, Big Adventures



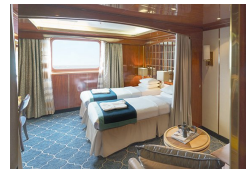
wildearth-travel.com

info@wildearth-travel.com

INSIDE YOUR SHIP



Classic Suite



Deluxe Suite



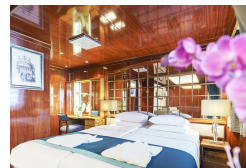
Main Deck Suite



Owner's Suite



Premium Suite



Superior Suite



Triple Classic



Wild Earth Travel

Small Ships, Big Adventures



wildearth-travel.com

info@wildearth-travel.com

PRICING

25-Jan-2026 to 07-Feb-2026

Triple Classic	20395 AUD pp
Main Deck Suite	26995 AUD pp
Classic Suite	28895 AUD pp
Superior Suite	29495 AUD pp
Deluxe Suite	32795 AUD pp
Premium Suite	35295 AUD pp
Owner's Suite	44595 AUD pp

26-Jan-2027 to 09-Feb-2027

Triple Classic	23595 AUD pp
Main Deck Suite	31095 AUD pp
Classic Suite	33395 AUD pp
Superior Suite	33995 AUD pp
Deluxe Suite	37795 AUD pp
Premium Suite	40595 AUD pp
Owner's Suite	51295 AUD pp

Wild Earth Travel
Small Ships, Big Adventures

0800 945 3327 (within New Zealand) | +64 (0) 3 365 1355 | 1800 107 715 (within Australia)

info@wildearth-travel.com | wildearth-travel.com



Wild Earth Travel

Small Ships, Big Adventures



wildearth-travel.com

info@wildearth-travel.com

10% OFF

Early Bird Discount (10% off Triple, Main Deck, Single, and Classic Suites; 15% off Superior, Deluxe, Premium, and Owner's Suites) is available till July 31, 2025. Terms and conditions apply. This special offer is subject to availability. Please contact us for more details.

Optional extras & upgrades

Sea Kayaking. From 795 USD

Antarctica is a paddlers' paradise. The White Continent boasts some of the world's most impressive landscapes and is home to incredible marine wildlife. Sea Kayak Club members will have the opportunity to paddle through tranquil waters filled with glittering icebergs and porpoising penguins while surrounded by magnificent glaciers and mountains. Price for Antarctic cruises 2018/19: 795 USD

Camping. From 285 USD

If you're looking for an unforgettable way to expand your experience on the White Continent, then Antarctica Camping may be the perfect choice for you. This optional activity is your unique opportunity to meet Antarctica on its own terms by spending a night out on the snow and ice! Price for Antarctic cruises 2018/19: 285 USD

"Faces" of Buenos Aires

Duration : from 2 days Explore the cosmopolitan, dynamic, many-faced & generous city of Buenos Aires. It offers a rich cultural, historic and architectural heritage built by generations of Spanish, Italians, Germans, Russians and many other immigrants. The city is a blend of Tango, coffee stores, theaters, antiques; art crafts markets, museums, gallery nights, and gastronomic delights. You will visit historical squares and neighborhoods, walk in the city's charming parks, taste the most delightful typical Argentine dishes, and – of course! – enjoy the unique sexual magnetism of the Tango performed by the best tango dancers and singers.

Iguazu Falls: Natural Wonder of the World

Duration : from 3 days The Iguazu Falls are the most breathtaking waterfalls in South America. The falls were chosen as one of the new natural Seven Wonders of the World. Perpetual rainbows, hundreds of butterflies, immense green jungle and the energy of the falling water will leave you lost for words. During the tour you'll visit Iguazu Falls from the Argentine and Brazil sides. Explore the unique flora and fauna of the Iguazu Falls National Park. Experience close the striking views and the thundering sounds of the waterfalls. Discover one of the greatest wonders of the natural world.



Wild Earth Travel
Small Ships, Big Adventures

0800 945 3327 (within New Zealand) | +64 (0) 3 365 1355 | 1800 107 715 (within Australia)

info@wildearth-travel.com | wildearth-travel.com