

# Wild Earth Travel

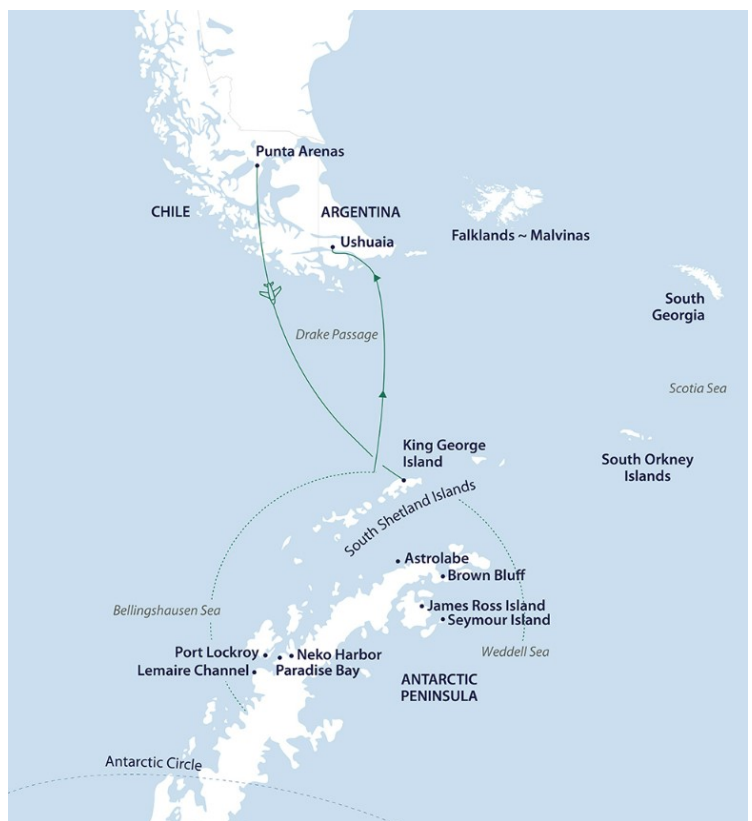
*Small Ships, Big Adventures*

**wildearth-travel.com**

**info@wildearth-travel.com**

## WILD ANTARCTICA FLY/SAIL EXPEDITION FEATURING THE WEDDELL SEA

Famed for its enormous icebergs, year-round sea ice, fascinating fossils and the pivotal role it played in Shackleton's Endurance expedition, the Weddell Sea offers unsurpassed opportunities for exploration. Embark on a true Antarctic expedition as we not only explore the west Antarctic Peninsula, but also attempt to venture east towards the icy perimeter of the Weddell Sea, often guarded by impenetrable pack ice and home to awe-inspiring tabular icebergs that we hope to see.



### ITINERARY

#### Day 1 Arrive Punta Arenas

Arrive in Punta Arenas, where you will be met by a representative of Aurora Expeditions and transferred to our hotel. We ask that you arrive no later than 2:00pm so that you may attend our important briefing this evening.

Wild Earth Travel

*Small Ships, Big Adventures*

**0800 945 3327** (within New Zealand) | +64 (0) 3 365 1355 | **1800 107 715** (within Australia)

info@wildearth-travel.com | **wildearth-travel.com**



# Wild Earth Travel

*Small Ships, Big Adventures*

**wildearth-travel.com**

**info@wildearth-travel.com**

Please visit the Aurora Expeditions hospitality desk in the lobby between 2:00pm - 6:00pm to collect your luggage cabin tags. Our team will confirm details regarding your embarkation day, answer any questions and provide you with information about where to dine or purchase last minute items.

Overlooking the Straits of Magellan, the city sits astride one of the world's most historic trade routes. Today, Punta Arenas reflects a great blend of cultural backgrounds, from English sheep ranchers to Portuguese sailors. It remains an utterly fascinating testament to Chile's rich history. Modern day Punta Arenas is home to many popular restaurants, and bars, offering a mix of local and international fare (meals at your own expense today).

At 7.00 pm this evening, meet your fellow expeditioners at a voyage briefing where we will reconfirm your transfer times for tomorrow, explain the procedures for your flight to King George Island and outline important IAATO regulations for visitors to Antarctica.

## Day 2 Embarkation

This morning we will be transferred to Punta Arenas airport for our charter flight to King George Island, Antarctica (weather permitting). The flight will take approximately one hour and forty-five minutes. On arrival into King George Island our expedition team is on hand to greet you and to prepare you for your Zodiac transfer to the vessel. You will have time to settle into your cabin before our important safety briefings.

Note: King George Island is located at the northern part of the Antarctic Peninsula in the South Shetland Islands and is one of the most remote places on Earth. A clear sky with perfect visibility is required for safe take-off and landing. A contingency plan will be applied to your itinerary should your flights not proceed today. Your safety is our utmost priority. We apologise in advance for any delays caused due to this unpredictable situation. Please refer to our terms and conditions for a more detailed explanation.

## Days 3-10 Weddell Sea & Antarctic Peninsula

It's almost impossible to describe the feeling of arriving in Antarctica. Spotting

your first iceberg and taking a deep breath of some of the most fresh, crisp air on earth is an experience that will stay with you forever.

Once we arrive, the western side of the Antarctic Peninsula and the South Shetland Islands are ours to explore, and we have a host of choices available to us. Because we are so far south, we will experience approximately 18-24 hours of daylight and the days can be as busy as you wish.

Your experienced expedition team, who have made countless journeys to this area, will use their expertise to design your voyage from day to day, choosing the best options based on the prevailing weather, ice conditions and wildlife opportunities.

We generally make landings or Zodiac excursions twice a day. You will want to rug up before joining Zodiac cruises along spectacular ice cliffs or among grounded icebergs, keeping watch for whales, seals and porpoising penguins. Zodiacs will also transport you from the ship to land, where you can visit penguin rookeries, discover historic huts and explore some of our favourite spots along the peninsula.

While ashore we aim to stretch our legs, wandering along pebbly beaches or perhaps up snow-covered ridgelines to vantage points with mountains towering overhead and ice-speckled oceans below. If you have chosen an optional activity, you will have the option to do that whenever conditions allow, and of course keen polar plungers will have the chance to fully immerse themselves in polar waters - conditions permitting!

In addition to Zodiac cruises and shore excursions, we may ship cruise some of the narrow, dramatic straits separating offshore islands from the mainland, or linger in scenic bays to watch whales travelling or feeding.

This is a great time to enjoy the observation lounge for uninterrupted views of Antarctica in all its splendour. Keep an ear out for the creak and deep rumble of glaciers as they carve their way from summit to sea. Take a quiet moment to experience the wonder of this incredible white continent.

Central to the story of where Sir Ernest Shackleton's ship, the Endurance became trapped in formidable sea ice, the Weddell Sea certainly is high on the list for many polar adventurers. A small set of islands standing off to the east of the Antarctic Peninsula collectively form the Antarctic Sound - the gateway to the Weddell Sea. With a well-deserved reputation as being an iceberg alley where large icebergs try to escape the Weddell Sea through Antarctic Sound, often making navigation difficult. However, the rewards can be great. Fossils are a reminder of a more temperate era - gastropods, large clams, and spiral-shaped ammonites, all turned to stone.



# Wild Earth Travel

*Small Ships, Big Adventures*

**wildearth-travel.com**

**info@wildearth-travel.com**

We hope to experience memorable wildlife encounters as the Weddell boasts a large Adelie penguin colony just outside of Antarctic Sound, some of which breed on the rocky slopes of a small volcanic island, where a large colony of Antarctic blue-eyed shags jostle for space with nest-building Wilson's storm petrels. On thrilling Zodiac excursions or slicing a path through the maze of sea ice in your kayak, keep watch for chinstrap and gentoo penguins in and out of the water, as well as humpback, minke and orca whales. Your camera is sure to get a solid workout during your time in the Weddell Sea.

## Days 11-12 Drake Passage Crossing

Enjoy a final morning landing in the South Shetland Islands before we re-enter the Drake Passage for our return journey to South America.

With lectures and film presentations to complete our Antarctic experience, there is still plenty of time to enjoy the magic of the Southern Ocean and the life that calls it home. There is time for reflection and discussion about what we have seen and experienced. We hope you become ambassadors for Antarctica telling your family, friends and colleagues about your journey to this magical place, advocating for its conservation and preservation so that they might one day visit the region to experience what you have been lucky to see and do here.

As we approach the tip of South America, our Captain may sail close to legendary Cape Horn, weather and time permitting.

## Day 13 Disembark Ushuaia

During the early morning, we cruise up the Beagle Channel, before quietly slipping into dock in Ushuaia, where we will be free to disembark around 8.00 am. Farewell your expedition team and fellow passengers as we all continue our onward journeys, hopefully with a newfound sense of the immense power of nature.

Upon disembarkation, for those continuing their travels in the region, transportation to the hotel will be arranged exclusively for guests who have

booked their accommodations through Aurora or for those staying in downtown areas near the port. Expeditioners departing on flights prior to 12:30 pm will be directly transferred to Ushuaia Airport, those with flights after 12:30 pm will have the opportunity to explore Ushuaia before an afternoon airport transfer, and the transfer procedures and details will be communicated onboard before disembarkation.

Note: At the conclusion of the voyage, we do not recommend booking flights departing Ushuaia prior to 12.00 pm on the day of disembarkation in case there are delays.

### Please Note:

Itineraries are subject to change.



Wild Earth Travel  
*Small Ships, Big Adventures*

**0800 945 3327** (within New Zealand) | +64 (0) 3 365 1355 | **1800 107 715** (within Australia)

info@wildearth-travel.com | **wildearth-travel.com**



# Wild Earth Travel

*Small Ships, Big Adventures*

**wildearth-travel.com**

**info@wildearth-travel.com**

## YOUR SHIP: SYLVIA EARLE

<b>YOUR SHIP:</b>	<b>Sylvia Earle</b>
<b>VESSEL TYPE:</b>	<b>Luxury Expedition</b>
<b>LENGTH:</b>	<b>104 meters</b>
<b>PASSENGER CAPACITY:</b>	<b>126</b>
<b>BUILT/REFURBISHED:</b>	<b>2020/2021</b>

Launching in October 2021, the Sylvia Earle honours renowned oceanographer and marine conservationist Dr. Sylvia Earle. As the first female chief scientist of NOAA and a Time Magazine Hero for the Planet, Sylvia's legacy lives on through this state-of-the-art expedition vessel designed for sustainability and exploration.

Built for challenging waters like the Drake Passage, the Sylvia Earle features the cutting-edge Ulstein X-BOW® for smoother sailing, reduced fuel consumption, and better speed through rough seas. Inside the bow, the stunning Glass Atrium Lounge offers panoramic views.

Between landings, enjoy the heated saltwater open-air pool, jacuzzis, gym, sauna, and optional massages in the Wellness Centre. The ship is fitted with advanced safety features, including dual propulsion systems and a fully equipped medical clinic for remote travel.

A champion of responsible travel, the ship runs one of the world's cleanest marine engines, reducing emissions by up to 80%. Virtual anchoring protects delicate seabeds by avoiding traditional anchors.

Expedition-ready, the Sylvia Earle includes four sea-level Zodiac

platforms for fast and safe transfers to shore. Adventure gear is prepped in spacious, expert-designed activity areas with lockers and drying zones for wetsuits and dry suits--perfect for kayaking, diving, and other optional activities.



activities.

Wild Earth Travel

*Small Ships, Big Adventures*

**0800 945 3327** (within New Zealand) | +64 (0) 3 365 1355 | **1800 107 715** (within Australia)

info@wildearth-travel.com | **wildearth-travel.com**

# Wild Earth Travel

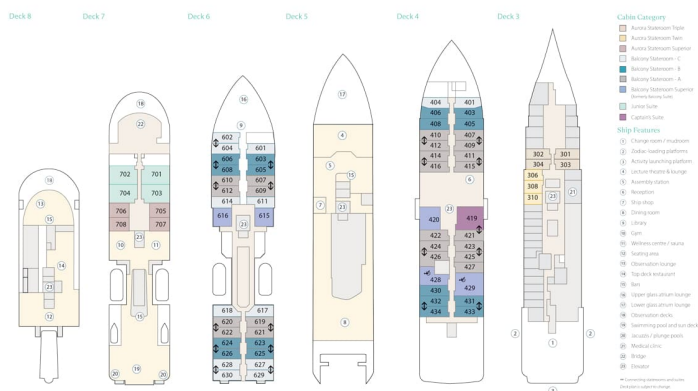
*Small Ships, Big Adventures*

[wildearth-travel.com](http://wildearth-travel.com)

[info@wildearth-travel.com](mailto:info@wildearth-travel.com)

## INSIDE YOUR SHIP

The Sylvia Earle Deck Plan



Aurora Stateroom Superior



Aurora Stateroom Triple Share



Balcony Stateroom Category A



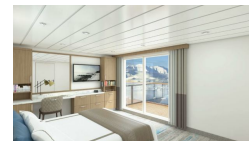
Balcony Stateroom Category B



Balcony Stateroom Category C



Balcony Stateroom Superior



Captain's Suite



Junior Suite



Wild Earth Travel  
*Small Ships, Big Adventures*

0800 945 3327 (within New Zealand) | +64 (0) 3 365 1355 | 1800 107 715 (within Australia)

[info@wildearth-travel.com](mailto:info@wildearth-travel.com) | [wildearth-travel.com](http://wildearth-travel.com)

# Wild Earth Travel

*Small Ships, Big Adventures*

**wildearth-travel.com**

**info@wildearth-travel.com**

## PRICING

### 17-Feb-2026 to 01-Mar-2026

Aurora Stateroom Triple Share	20095 USD pp
Aurora Stateroom Superior	21895 USD pp
Balcony Stateroom Category C	22495 USD pp
Balcony Stateroom Category B	23595 USD pp
Balcony Stateroom Category A	25395 USD pp
Balcony Stateroom Superior	27795 USD pp
Junior Suite	34895 USD pp
Captain's Suite	41295 USD pp

### 02-Mar-2027 to 14-Mar-2027

Aurora Stateroom Triple Share	20395 USD pp
Aurora Stateroom Superior	22195 USD pp
Balcony Stateroom Category C	22795 USD pp
Balcony Stateroom Category B	23995 USD pp
Balcony Stateroom Category A	25795 USD pp
Balcony Stateroom Superior	28195 USD pp
Junior Suite	33495 USD pp
Captain's Suite	38295 USD pp
Special Departure	0 pp