

Wild Earth Travel

Small Ships, Big Adventures

wildearth-travel.com

info@wildearth-travel.com

WESTERN ANTARCTICA SEMI-CIRCUMNAVIGATION CRUISE

Escape into another realm as you board our luxury boutique ice-class ship on this once-in-a-lifetime trip from South America to New Zealand. Our epic semi-circumnavigation cruise of Antarctica fulfils the ultimate bucket list, sailing on glassy seas, passing by monumental icebergs, unheralded landscapes and phenomenal wildlife. We explore icy waters to reach the world's southernmost islands where only a handful of adventurers, explorers and scientists have been before. And as we cross the polar circle, you get to join an elite group of people who have been to some of the least-visited places on the planet.



ITINERARY

Days 0 - 1 Pre Cruise & Ushuaia

Nestled in the foothills of the snow-capped Martial Range, Ushuaia's colourful streets and mismatched buildings cascade from the imposing mountains before coming to an abrupt halt at the shores of the Beagle Channel. As one of the world's southernmost cities, Ushuaia carries its 'end of the world' reputation well. The moody weather and dramatic surroundings certainly help. Board your boutique ship before departing for your journey through one of the most captivating wilderness regions of the world.

Days 2-3 Day at sea

Sea days are rarely dull. Take the time to sit back and let the world go by. The ship's observation decks provide stunning views of the passing ocean. A day at sea gives you the opportunity to mingle with other passengers and share your experiences of this incredible trip or head to our library which is stocked full of reference books. Get an expert's view in one of our on-board lectures or perhaps perfect your photography skills with invaluable advice from our onboard professional photographers.

Wild Earth Travel

Small Ships, Big Adventures

0800 945 3327 (within New Zealand) | +64 (0) 3 365 1355 | **1800 107 715** (within Australia)

info@wildearth-travel.com | **wildearth-travel.com**

Wild Earth Travel

Small Ships, Big Adventures

wildearth-travel.com

info@wildearth-travel.com

Day 4 South Shetland Islands

While the South Shetlands' proximity to Antarctica makes the ice-bound sea impassable during winter (April to October), these are the first islands to see snow melt in spring (November) and the slightly warmer temperature means that the fauna is also different from what you see in Antarctica proper. Ferns, grasses, lichens and native flora that grow here have more in common with Patagonia than they do with Antarctica.

Days 5-6 Antarctic Peninsula

Among captivating glaciers, majestic icebergs and snowy islands, the Antarctic Peninsula is where most visitors to the White Continent live their Antarctica dream. It's the most accessible part, with scientific bases and incredible scenery, like the photogenic Lemaire Channel. Shore excursions might include Mikkelsen Harbour, where among gentoo penguins, snowy sheathbills and skuas, Antarctic Weddell seals haul out.

Days 7-8 Day at sea

Sea days are rarely dull. Take the time to sit back and let the world go by. The ship's observation decks provide stunning views of the passing ocean. A day at sea gives you the opportunity to mingle with other passengers and share your experiences of this incredible trip or head to our library which is stocked full of reference books. Get an expert's view in one of our on-board lectures or perhaps perfect your photography skills with invaluable advice from our onboard professional photographers.

Day 9 Peter Island, Belinghausen Sea

The magnitude of translucent bergs silently floating on crystal-clear seas is often broken up by the tail of a fluking whale and leopard seals resting on an ice floe. Rarely visited by ships, the ice-covered volcanic Peter I island in Bellingshausen Sea is claimed by Norway and is home to elephant seals, cape pigeons and southern fulmars. Two of the largest islands in the Antarctic - Alexander and Thurston Islands - lie past Peter I Island.

Days 10-12 Day at sea

Sea days are rarely dull. Take the time to sit back and let the world go by. The ship's observation decks provide stunning views of the passing ocean. A day at sea gives you the opportunity to mingle with other passengers and share your experiences of this incredible trip or head to our library which is stocked full of reference books. Get an expert's view in one of our on-board lectures or perhaps perfect your photography skills with invaluable advice from our onboard professional photographers.

Day 13 Shepard Island

Day 14 Day at sea

Spend your day at sea enjoying your boutique 5-star ship. Treat yourself to a spa day, attend an expert-led onboard lecture or enjoy the ocean views from the deck or the comfort of our Observation Lounge.

Day 15 Bay of Whales

Day 16 Crossing the International Date Line

Experience time travel first-hand as you cross the international date line. This imaginary line in the Pacific Ocean joins the South Pole to the North Pole and roughly follows 180 degrees longitude with a deviation east to the 150-degree meridian to include the Kiribati and Line Islands. Sailors celebrate the passing with the Ceremony of the Domain of the Golden Dragon. On our transpacific journey, you will lose a day as you cross the line.

Days 17-25 Ross Sea, Antarctica

One of the last untouched salt-water wilderness regions, the Ross Sea region is home to an abundance of wildlife - southern right whales, orca, emperor penguins, parakeets and elephant seals, to name a few. Antarctica's largest Adelie penguin colony is located on the shores of the Ross Sea. This faraway place also exudes polar history - many of the expedition huts of past explorers are still perfectly preserved.



Wild Earth Travel

Small Ships, Big Adventures

wildearth-travel.com

info@wildearth-travel.com

Days 26-28 Day at sea

Sea days are rarely dull. Take the time to sit back and let the world go by. The ship's observation decks provide stunning views of the passing ocean. A day at sea gives you the opportunity to mingle with other passengers and share your experiences of this incredible trip or head to our library which is stocked full of reference books. Get an expert's view in one of our on-board lectures or perhaps perfect your photography skills with invaluable advice from our onboard professional photographers.

Days 29-31 Cruising Sub-Antarctic Islands

Days 32-33 Dunedin

Your luxury expedition cruise sadly comes to an end in Dunedin, on the South Island, the principal city of the Otago region. Set in a pretty bay that serves as a port and surrounded by bush-covered hills, the town has quirky historic appeal. One of the best-preserved Victorian and Edwardian cities in the Southern Hemisphere, Dunedin is known as the Edinburgh of New Zealand, and it's proud of its Celtic connections. Small and eminently walkable, see elaborate civic buildings, New Zealand's only castles, funky alleyways filled with street art, and picturesque parks. The Toitu Otago Early Settlers Museum and Otago Museum come highly recommended, as well as a visit to the Dunedin Chinese Garden.

Please note:

Itineraries are subject to change.



Wild Earth Travel

Small Ships, Big Adventures

wildearth-travel.com

info@wildearth-travel.com

YOUR SHIP: MINERVA

YOUR SHIP:	Minerva
VESSEL TYPE:	Expedition Ship
LENGTH:	115 meters
PASSENGER CAPACITY:	158
BUILT/REFURBISHED:	2020-2021

The SH Minerva is a boutique expedition ship purpose-built for exploring far-flung destinations and remote polar regions in comfort and style. Crafted at Finland's esteemed Helsinki Shipyard, she features a Polar Class PC5 ice-strengthened hull and advanced stabilisers, ensuring smooth sailing even in challenging waters. With just 158 guests served by 122 crew across nine decks, the atmosphere on board is intimate and welcoming. Elegant Scandinavian-inspired interiors, panoramic observation spaces, and a range of facilities - from the stargazing deck and library to the spa, heated outdoor pool, and fine dining venues - make every moment at sea a pleasure.

Accommodation ranges from well-appointed oceanview staterooms to spacious premium suites, each offering thoughtful touches such as a flame-effect fireplace, Illy espresso machine, luxury toiletries, and complimentary binoculars for wildlife spotting. Many feature private balconies for uninterrupted views of the passing scenery. Attentive crew provide a warm, personalised service, ensuring that every guest feels at home while enjoying a journey that blends adventure with refined comfort. Whether navigating icy channels or gliding into sunlit harbours, the SH Minerva offers an unforgettable cruising

experience.



experience.

Wild Earth Travel
Small Ships, Big Adventures

0800 945 3327 (within New Zealand) | +64 (0) 3 365 1355 | **1800 107 715** (within Australia)

info@wildearth-travel.com | **wildearth-travel.com**

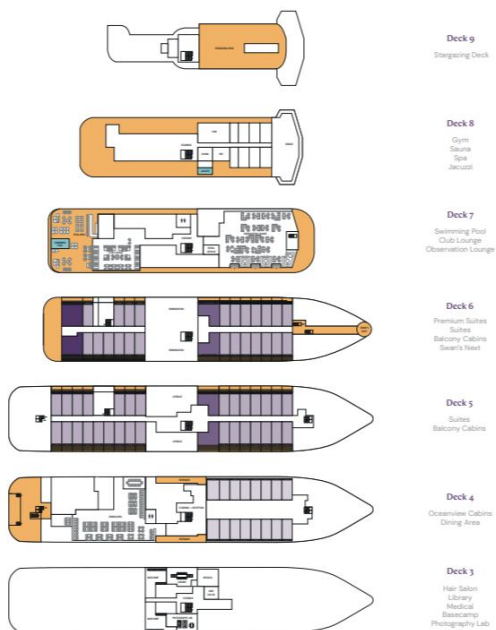
Wild Earth Travel

Small Ships, Big Adventures

wildearth-travel.com

info@wildearth-travel.com

INSIDE YOUR SHIP



Balcony D5



Balcony D6



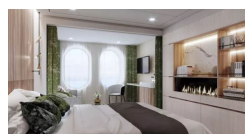
Balcony M5



Oceanview D4



Oceanview M4



Premium Suite



Suite



Wild Earth Travel

Small Ships, Big Adventures

0800 945 3327 (within New Zealand) | +64 (0) 3 365 1355 | 1800 107 715 (within Australia)

info@wildearth-travel.com | wildearth-travel.com



Wild Earth Travel

Small Ships, Big Adventures



wildearth-travel.com

info@wildearth-travel.com

PRICING

02-Feb-2027 to 08-Mar-2027

Oceanview D4	42650 AUD pp
Oceanview M4	44775 AUD pp
Balcony D5	46900 AUD pp
Balcony M5	49000 AUD pp
Balcony D6	51175 AUD pp
Suite	74625 AUD pp
Premium Suite	85300 AUD pp



Wild Earth Travel

Small Ships, Big Adventures

0800 945 3327 (within New Zealand) | +64 (0) 3 365 1355 | **1800 107 715** (within Australia)

info@wildearth-travel.com | **wildearth-travel.com**