

Wild Earth Travel

Small Ships, Big Adventures

wildearth-travel.com

info@wildearth-travel.com

UNEXPLORED WESTERN ANTARCTICA BETWEEN TWO CONTINENTS LUXURY CRUISE

Antarctic exploration cannot be separated from the pioneers who travelled in these territories at the edges of the Earth. Charcot, Bellingshausen, Shackleton, Fisher, Ross, Amundsen... They left their names everywhere. Le Commandant Charcot invites you to set off in the footsteps of these great Antarctic figures during an unrivalled half-circumnavigation that will sail from the far south of the American continent to Australia. Like a real explorer, you will navigate along the Antarctic Peninsula and Marguerite Bay, approach Marie Byrd Land, one of the last Terra nullius of our planet, and, if conditions allow it, attempt to reach Charcot Island, enveloped in its blanket of ice. Finally, explore Ross Sea, which is very significant in the history of South Pole exploration and also the world's largest marine protected area. As a privileged witness, keep a watchful eye and take the time to observe the Antarctic petrels, whales, orcas, seals and penguins that are to be found here.

For those wishing to extend their exploration of the White Continent, the Tasmanian city will also be the departure point for a second half-circumnavigation aboard Le Commandant Charcot that you can discover here, so as to continue fully exploring the Antarctic and its mythical regions.

We are privileged guests in these extreme lands where we are at the mercy of weather and ice conditions. Our navigation will be determined by the type of ice we come across; as the fast ice must be preserved, we will take this factor into account from day to day in our itineraries. The sailing schedule and any landings, activities and wildlife encounters are subject to weather and ice

conditions. These experiences are unique and vary with each departure. The Captain and the Expedition Leader will make every effort to ensure that your experience is as rich as possible, while respecting safety instructions and regulations imposed by the IAATO.



the IAATO.

ITINERARY

Days 0 - 1 - Pre Cruise Santiago/Ushuaia

****The day before embarkation - Santiago****

Wild Earth Travel

Small Ships, Big Adventures

0800 945 3327 (within New Zealand) | +64 (0) 3 365 1355 | **1800 107 715** (within Australia)

info@wildearth-travel.com | **wildearth-travel.com**

Wild Earth Travel

Small Ships, Big Adventures

wildearth-travel.com

info@wildearth-travel.com

Transfer from airport to PONANT selected hotel.

In order to organise your transfer, please inform your travel agent 60 days before departure, your flight number as well as your arrival time and day.

Meet and greet by our local representative at your 5* hotel.

Lunch on your own and time at leisure in the afternoon.

Dinner.

Overnight at the hotel.

****Embarkation Day - Santiago/Ushuaia****

A light morning breakfast will be served before leaving for the airport for your Santiago/Ushuaia flight.

Transfer to the airport.

Flight Santiago/Ushuaia selected by PONANT in economy class. Seats in business class may be available, please contact your travel agent. Approximate flight duration: 3 hours

Meet and greet at Ushuaia airport (English-speaking assistance).

Transfer to Le Commandant-Charcot.

Embarkation.

Capital of Argentina's Tierra del Fuego province, Ushuaia is considered the gateway to the White Continent and the South Pole. Nicknamed "El fin del mundo" by the Argentinian people, this city at the end of the world nestles in the shelter of mountains surrounded by fertile plains that the wildlife seem to have chosen as the ultimate sanctuary. With its exceptional site, where the Andes plunge straight into the sea, Ushuaia is one of the most fascinating places on earth, its very name evocative of journeys to the unlikely and the inaccessible...

Days 2 - 3 Crossing the Drake Passage

Use your days spent in the ****Drake Passage**** to familiarise yourself with your ship and deepen your knowledge of the Antarctic. The Expedition Leader will first present the IAATO rules of conduct that must be observed during landings in the region and will explain everything you need to know about the

zodiac outings. Lectures about the history and wildlife of the Antarctic will be an opportunity for you to learn more about this magical region, where every cruise is a ****unique experience****. You will experience exceptional sailing moments on board and join the naturalist-guides on your ship's exterior decks to look out for albatrosses, cape petrels, and other seabirds flying over the Drake Passage.

Day 4 - Antarctic Peninsula

Succumb to the magic of a place unlike any other. To this day, the mythical ****Antarctic Peninsula**** still holds real fascination and promises its visitors unforgettable moments. Throughout your adventure in this icy realm, you will find yourself in the heart of a ****spectacular decor**** in subtle shades of blue and white, surrounded by ****exceptional wildlife****. Penguins, humpback whales, seals and giant petrels are at home here, as are elephant seals, fur seals, Antarctic minke whales, and orcas. Depending on which sites you will be lucky enough to visit, you may get the chance to observe them and share with them the beauty of these extreme parts.

Each day, based on ice conditions, the Captain and the Expedition Leader will suggest ****zodiac outings or landings**** to discover the infinite riches of the Antarctic Peninsula. Glaciers, ice floe, tabletop icebergs, mountain peaks that plunge straight into the sea, volcanic beaches, research stations, enchanting bays, and vestiges of the whaling industry: these are the faces of the Antarctic that will likely reveal themselves to you, in a hushed and surreal atmosphere. You will sail in the wake of Jean-Baptiste Charcot, Adrien de Gerlache and Sir Ernest Shackleton, great Antarctic explorers who, from the 19th century, set out to conquer these remote and uninhabited lands.

Day 4 - Crossing the Antarctic Circle

Weather permitting, we'll cross the mythic line of the ****Antarctic Polar Circle****, located along ****66 °33' south of the Equator****. This iconic area demarcates the point from which it is possible to view the midnight sun during the December solstice. Within this circle, the sun remains above the horizon for 24 consecutive hours at least once a year. Crossing this line, an experience known to few people, is sure to be an unforgettable highlight of your cruise through the polar regions.

Day 5 - Marguerite Bay

Wild Earth Travel

Small Ships, Big Adventures

0800 945 3327 (within New Zealand) | +64 (0) 3 365 1355 | **1800 107 715** (within Australia)

info@wildearth-travel.com | wildearth-travel.com

Wild Earth Travel

Small Ships, Big Adventures

wildearth-travel.com

info@wildearth-travel.com

The icebergs are each more majestic than the next and scattered around the deep and intense blue waters of **Marguerite Bay**, one of the most beautiful regions in the Antarctic. It is delimited in the north by the mountainous Adelaide Island, in the south by George VI Sound and Alexander Island, and in the east by the Fallières Coast. Charcot named it after his wife during his second expedition to the Antarctic between 1908 and 1910. In 1909, in the southern summer when the skies are at their clearest, he led an important scientific mission to map and study this region. The bay is home to a **number of cetaceans** and you may get the chance to observe **leopard seals** or **Adelie penguins**.

Day 5 - Antarctic Peninsula

Succumb to the magic of a place unlike any other. To this day, the mythical **Antarctic Peninsula** still holds real fascination and promises its visitors unforgettable moments. Throughout your adventure in this icy realm, you will find yourself in the heart of a **spectacular decor** in subtle shades of blue and white, surrounded by **exceptional wildlife**. Penguins, humpback whales, seals and giant petrels are at home here, as are elephant seals, fur seals, Antarctic minke whales, and orcas. Depending on which sites you will be lucky enough to visit, you may get the chance to observe them and share with them the beauty of these extreme parts.

Each day, based on ice conditions, the Captain and the Expedition Leader will suggest **zodiac outings or landings** to discover the infinite riches of the Antarctic Peninsula. Glaciers, ice floe, tabletop icebergs, mountain peaks that plunge straight into the sea, volcanic beaches, research stations, enchanting bays, and vestiges of the whaling industry: these are the faces of the Antarctic that will likely reveal themselves to you, in a hushed and surreal atmosphere. You will sail in the wake of Jean-Baptiste Charcot, Adrien de Gerlache and Sir Ernest Shackleton, great Antarctic explorers who, from the 19th century, set out to conquer these remote and uninhabited lands.

Day 6 - Expedition to Charcot Island

When he discovered this island surrounded by sea ice in 1910 from aboard the Pourquoi Pas ? as he mapped Alexander Island, **Jean-Baptiste Charcot** had not been able to get less than 40 miles away from it. Situated in a zone that experiences frequent low-pressure systems and regular cloud cover, the island remains in many ways an enigma. It is **entirely covered in**

ice and sheer cliffs, with the exception of the rocky outcrops extending over a dozen kilometres in the far north-west. The ice in the narrowest part of Wilkins Sound has been cracking in recent times, thus officially detaching this island from its neighbour, Alexander Island, lying 50 km away. Very few people have landed on this **largely untouched island**, whose waters attract numerous seabirds, such as petrels, Antarctic terns and skuas.

Days 7 - 9 At sea aboard Le Commandant Charcot

Spend exceptional moments sailing aboard Le Commandant Charcot, the world's first luxury polar exploration vessel and the first PC2-class polar cruise ship capable of sailing into the very heart of the ice, on seas and oceans which the frozen conditions render inaccessible to ordinary ships. Le Commandant Charcot is fitted with oceanographic and scientific equipment selected by a committee of experts. Take advantage of the on-board lectures and opportunities for discussion with these specialists to learn more about the poles. Participate in furthering scientific research with PONANT and let us discover together what these fascinating destinations have yet to reveal to us.

Days 10 - 15 Marie Byrd Land exploration

Marie Byrd Land is one of the most remote territories of our planet's most inaccessible continent. It is a real privilege to just be able to contemplate its shores! Between the **Ross Sea** and its large shelf to the east and **Bellingshausen Sea** to the west, the frozen coastlines of these lands are bordered by the **Amundsen Sea**, partially covered by a thick ice floe. Stretching over more than a million km² (over 620,000 square miles) in Western Antarctica, its ground is also isolated from the rest of the continent by the Transantarctic Mountains. It is certainly this geographic remoteness and its harsh climate that have made it one of our planet's rare **Terra nullius**, a territory claimed by no State. In 1929, Marie Byrd Land got its name from Admiral Richard E. Byrd, in honour of his wife, following his expedition to the region. The exploration of its ice-sculpted landscapes will plunge you into the infinite Antarctic desert, where penguins, seals, whales and orcas are the only living souls. Depending on the time and weather conditions, your exploration of the region will take you towards a string of islands which, although little-known, remain fascinating: Siple Island and its eponymous mount, resulting from an old volcano and Clark Island.

Day 16 - At sea aboard Le Commandant Charcot

Wild Earth Travel

Small Ships, Big Adventures

0800 945 3327 (within New Zealand) | +64 (0) 3 365 1355 | 1800 107 715 (within Australia)

info@wildearth-travel.com | wildearth-travel.com

Wild Earth Travel

Small Ships, Big Adventures

wildearth-travel.com

info@wildearth-travel.com

Spend exceptional moments sailing aboard Le Commandant Charcot, the world's first luxury polar exploration vessel and the first PC2-class polar cruise ship capable of sailing into the very heart of the ice, on seas and oceans which the frozen conditions render inaccessible to ordinary ships. Le Commandant Charcot is fitted with oceanographic and scientific equipment selected by a committee of experts. Take advantage of the on-board lectures and opportunities for discussion with these specialists to learn more about the poles. Participate in furthering scientific research with PONANT and let us discover together what these fascinating destinations have yet to reveal to us.

Days 17 - 23 Ross Sea Region

The **Ross Sea**, the southernmost sea in the world, owes its name to Sir James Clark Ross, both a naturalist and a Royal Navy officer, who first explored the area in 1841 with HMS Erebus and HMS Terror. It is bounded on the east by Roosevelt Island and the Edward VII Peninsula in Mary Byrd Land, on the west by Ross Island and the coastal mountains of Victoria Land, and on the south by the **Ross Ice Shelf**, the largest ice shelf in Antarctica located some 320 km from the geographic South Pole. The history and treasures of the world's ultimate marine sanctuary will be revealed during this extraordinary expedition.

You will be able, weather and ice conditions permitting, to discover several emblematic sites in the region. Among the possible stopovers, **Cape Adare**, at the northern end of the **Borchgrevink coast**, home to the world's largest colony of Adelie penguins. We will attempt to reach **Terra Nova Bay** where the Italian and South Korean scientific stations are located to the north and the **Drygalski Ice Tongue** to the south. Dating back at least 4000 years, it extends 70 km offshore from the David Glacier and is 24 km at its widest point. On the **Inexpressible Island**, discover the exceptional survival conditions of a group of six men of the Terra Nova expedition, led by Robert Falcon Scott (1910-1913), forced to winter in a cave dug in the ice, today classified as an Antarctica historical monument. On **Ross Island**, follow in the footsteps of the polar explorers Sir James Clark Ross and discover Sir Ernest Shackleton's hut, classified as an Antarctica historical monument. Built at **Cape Royds** during the British expedition Nimrod (1907-1909), it proudly stands at the bottom of Mount Erebus. Sixty years earlier, while Captain James Ross was trying to reach the South Magnetic Pole, he discovered **Franklin Island**, located 130 km east of Cape Hickey in Victoria Land. He named it after Sir John Franklin, Arctic explorer and governor of the territory of present-day Tasmania. You will be

offered there, a privileged position to observe Adelie penguins in their daily ballet as well as Weddell seals, resting on the shore.

Day 17 Crossing the International Date Line

Your itinerary enables you to cross **the International Date Line**. This imaginary line across the Earth's surface approximately follows the 180th meridian in the Pacific Ocean. Because of the roundness of the Earth and the necessity of having reference time meridians, we have to change dates when we cross this line. So if your ship is travelling west, you will need to add a day to the expected date; conversely, if travelling east, you will take away a day. This paradox, already noted by Magellan's crews during his circumnavigation, serves as dramatic motivation in several novels, including Jules Verne's famous *Around the World in Eighty Days*.

Day 24 - Balleny Islands

The **Balleny Islands** are an extremely remote series of islands extending for about 160 kilometres in a northwest-southeast direction straddling the Antarctic Circle some 270 kilometres north of the Antarctic mainland. The volcanic islands are heavily glaciated and have received few human visitors since their discovery in 1839. Their isolated location within the rich waters of the Southern Ocean has resulted in a species diversity rivaling the entire **Ross Sea region**. **Humpback, fin and minke whales** are regular visitors to the rich feeding grounds along with **Crabeater, Weddell, elephant and leopard seals**. Several of the islands are home to significant colonies of **Adelie** and **Chinstrap penguins**. If time and weather permit, guests will have the opportunity to explore the spectacular coastal environments and view the prolific wildlife from our fleet of zodiac.

Days 25 - 28 At sea aboard Le Commandant Charcot

Spend exceptional moments sailing aboard Le Commandant Charcot, the world's first luxury polar exploration vessel and the first PC2-class polar cruise ship capable of sailing into the very heart of the ice, on seas and oceans which the frozen conditions render inaccessible to ordinary ships. Le Commandant Charcot is fitted with oceanographic and scientific equipment selected by a committee of experts. Take advantage of the on-board lectures and opportunities for discussion with these specialists to learn more about the poles. Participate in furthering scientific research with PONANT and let us

Wild Earth Travel

Small Ships, Big Adventures

0800 945 3327 (within New Zealand) | +64 (0) 3 365 1355 | 1800 107 715 (within Australia)

info@wildearth-travel.com | wildearth-travel.com



Wild Earth Travel

Small Ships, Big Adventures



wildearth-travel.com

info@wildearth-travel.com

discover together what these fascinating destinations have yet to reveal to us.

Days 29 - 30 Hobart, Tasmania

Hobart occupies a wonderful location at the mouth of the Derwent River, overseen by majestic **Mt Wellington** and surrounded by natural bushland. The **Tasmanian capital** is Australia's second-oldest city, after Sydney, and the picturesque waterfront is bordered by **19th-century warehouses and colonial mansions**. Salamanca Place is packed with shops, galleries and restaurants and the fascinating Museum of Old and New Art (MONA) is a short ferry ride from the quay. Hobart is within easy reach of some of **Tasmania**'s best-known destinations, from historic **Port Arthur** and the rugged Tasman Peninsula to Bruny Island, the Huon and Derwent Valleys and Mount Field National Park.

Please note:

Itineraries are subject to change.

Wild Earth Travel
Small Ships, Big Adventures

0800 945 3327 (within New Zealand) | +64 (0) 3 365 1355 | **1800 107 715** (within Australia)

info@wildearth-travel.com | **wildearth-travel.com**

Wild Earth Travel

Small Ships, Big Adventures

wildearth-travel.com

info@wildearth-travel.com

YOUR SHIP: LE COMMANDANT-CHARCOT

YOUR SHIP:	Le Commandant-Charcot
VESSEL TYPE:	Polar Luxury Expedition
LENGTH:	149.9 meters
PASSENGER CAPACITY:	135 cabins
BUILT/REFURBISHED:	2018/2019

Le Commandant Charcot is a purpose-built polar exploration vessel engineered for extreme environments, operating with a hybrid electric-LNG system that reduces noise, vibration and emissions while pushing deeper into ice than conventional ships. Interior spaces follow a restrained, insulated design philosophy that supports comfort in high-latitude conditions: multiple lounges, refined dining rooms, theatre, boutique and extensive wellness areas arranged to maintain warmth, calm and controlled movement throughout the ship. Accommodation spans 123 staterooms and suites, all with balconies, with upper-tier suites extending up to 115 m².

The vessel integrates dedicated scientific infrastructure into its core layout, including laboratories and working spaces that support ongoing polar research. Field operations and environmental systems are engineered from the ground up for low-impact navigation, aligning with the ship's mandate to access remote polar areas responsibly. A full virtual deck plan and live bow-mounted webcam reinforce the ship's emphasis on landscape immersion and transparency of experience.

Read About Our Experience on Board Le Commandant Charcot

It's All About the Destination... And This Ship



d This Ship

Wild Earth Travel

Small Ships, Big Adventures

0800 945 3327 (within New Zealand) | +64 (0) 3 365 1355 | **1800 107 715** (within Australia)

info@wildearth-travel.com | **wildearth-travel.com**

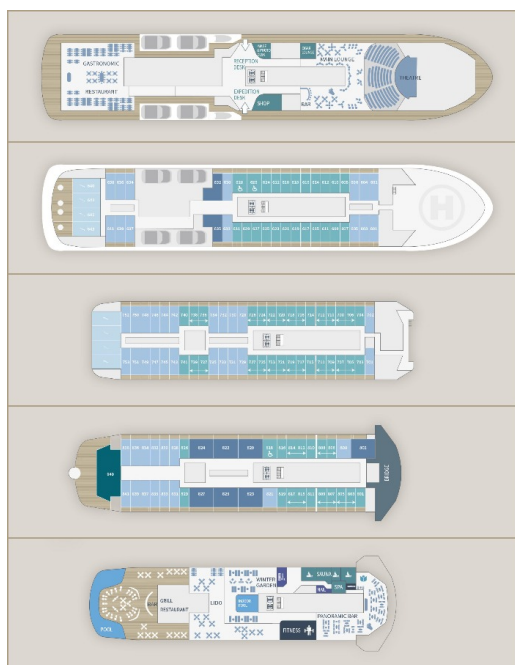
Wild Earth Travel

Small Ships, Big Adventures

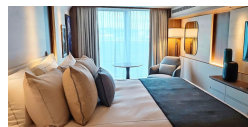
wildearth-travel.com

info@wildearth-travel.com

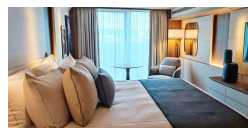
INSIDE YOUR SHIP



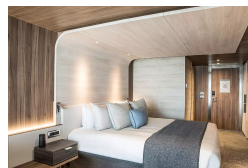
Deluxe Suite Deck 6



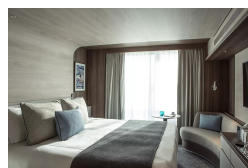
Deluxe Suite Deck 8



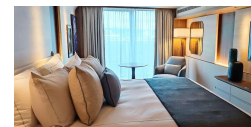
Grand Prestige Suite



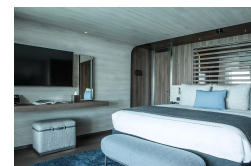
Prestige Stateroom Deck 6



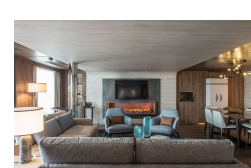
Deluxe Suite Deck 7



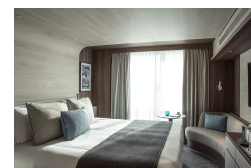
Duplex Suite



Owner's Suite



Prestige Stateroom Deck 7



Wild Earth Travel

Small Ships, Big Adventures

0800 945 3327 (within New Zealand) | +64 (0) 3 365 1355 | 1800 107 715 (within Australia)

info@wildearth-travel.com | wildearth-travel.com



Wild Earth Travel

Small Ships, Big Adventures



wildearth-travel.com

info@wildearth-travel.com

PRICING

10-Jan-2028 to 09-Feb-2028

Prestige Stateroom Deck 6	98770 AUD pp
Prestige Stateroom Deck 7	100700 AUD pp
Prestige Stateroom Deck 8	102610 AUD pp
Deluxe Suite Deck 6	105500 AUD pp
Deluxe Suite Deck 7	110330 AUD pp
Deluxe Suite Deck 8	114170 AUD pp
Grand Prestige Suite	166190 AUD pp
Prestige Suite Deck 7	179660 AUD pp
Prestige Suite Deck 8	182550 AUD pp
Privilege Suite Deck 8	185430 AUD pp
Duplex Suite	228780 AUD pp
Owner's Suite	272120 AUD pp

Wild Earth Travel
Small Ships, Big Adventures

0800 945 3327 (within New Zealand) | +64 (0) 3 365 1355 | **1800 107 715** (within Australia)

info@wildearth-travel.com | **wildearth-travel.com**



Wild Earth Travel

Small Ships, Big Adventures



wildearth-travel.com

info@wildearth-travel.com

SPECIAL OFFERS ON UNEXPLORED WESTERN ANTARCTICA

Online prices reflect the current brochure fare savings of up to 30%. Prices may change based on demand. Terms and conditions apply. This special offer is subject to availability. Please contact us for more details.



Wild Earth Travel

Small Ships, Big Adventures

0800 945 3327 (within New Zealand) | +64 (0) 3 365 1355 | **1800 107 715** (within Australia)

info@wildearth-travel.com | **wildearth-travel.com**