

Wild Earth Travel

Small Ships, Big Adventures

wildearth-travel.com

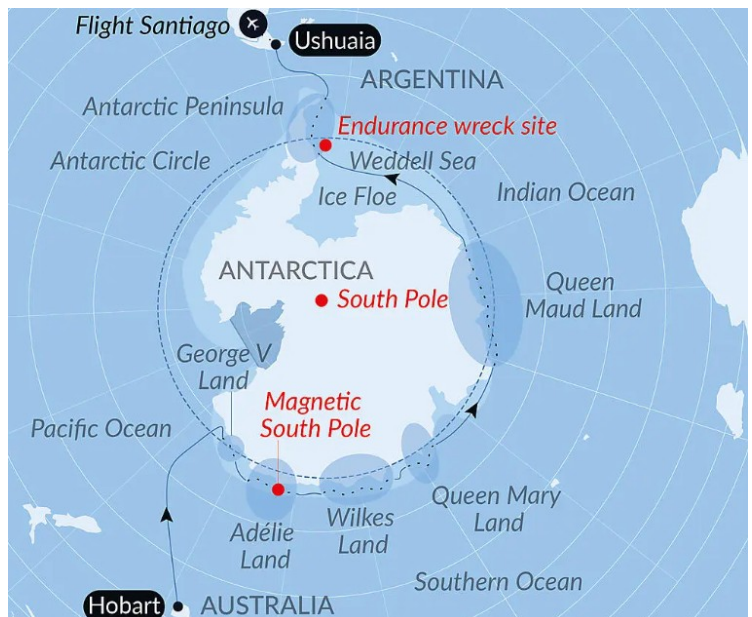
info@wildearth-travel.com

UNEXPLORED EASTERN ANTARCTICA BETWEEN TWO CONTINENTS LUXURY CRUISE

There where the ocean meets the ice, where the horizon is decked out in shades of blue and white, the routes of great polar adventure open up. Ross, Scott, Mawson, Shackleton ... these are the names who wrote the history of the southern seas. Aboard *Le Commandant Charcot*, a ship designed for polar exploration, set off to make your own journey in their wake, between Australia and the far south of the American continent. The cliffs of Adelie Land, the glaciers of Wilkes Land, and the immaculate shores of Queen Mary Land and Queen Maud Land form a theatre of ice in which time stands still. Further on, Ross Sea and Weddell Sea reveal their majestic ice shelves, captivating tabular icebergs and floating ice floes, the legendary territory of the *Endurance* wreck, where Shackleton's story remains forever engraved in the ice. As a privileged witness, keep a watchful eye and observe the whales, orcas, seals, petrels and penguins, the majestic inhabitants of these remote areas where nature's reign is absolute.

We are privileged guests in these extreme lands, where we are at the mercy of the weather and ice conditions. Our commitment to respecting this environment imposes certain rules of conduct. Our navigation will be determined by the type of ice we encounter; as the coastal ice must be preserved, we will take this factor into account each day when charting our itineraries. The sailing programme, outings, activities and observation of fauna are subject to weather and ice conditions. These experiences are unique and vary for each departure. The Captain and the Expedition Leader will make every effort to ensure that your experience is as rich as possible, while

complying with applicable safety rules and IAATO regulations.



gulations.

ITINERARY

Day 1 - Hobart, Tasmania

Hobart occupies a wonderful location at the mouth of the Derwent River, overseen by majestic **Mt Wellington** and surrounded by natural bushland. The **Tasmanian capital** is Australia's second-oldest city, after Sydney, and the picturesque waterfront is bordered by **19th-century warehouses and colonial mansions**. Salamanca Place is packed with shops, galleries and restaurants and the fascinating Museum of Old and New Art (MONA) is a short ferry ride from the quay. Hobart is within easy reach of some of **Tasmania's** best-known destinations, from historic **Port Arthur** and the rugged

Wild Earth Travel

Small Ships, Big Adventures

0800 945 3327 (within New Zealand) | +64 (0) 3 365 1355 | 1800 107 715 (within Australia)

info@wildearth-travel.com | wildearth-travel.com



Wild Earth Travel

Small Ships, Big Adventures



wildearth-travel.com

info@wildearth-travel.com

Tasman Peninsula to Bruny Island, the Huon and Derwent Valleys and Mount Field National Park.

Days 2 - 5 At sea aboard Le Commandant Charcot

Spend exceptional moments sailing aboard Le Commandant Charcot, the world's first luxury polar exploration vessel and the first PC2-class polar cruise ship capable of sailing into the very heart of the ice, on seas and oceans which the frozen conditions render inaccessible to ordinary ships. Le Commandant Charcot is fitted with oceanographic and scientific equipment selected by a committee of experts. Take advantage of the on-board lectures and opportunities for discussion with these specialists to learn more about the poles. Participate in furthering scientific research with PONANT and let us discover together what these fascinating destinations have yet to reveal to us.

Day 6 - Commonwealth Bay

Welcome to the country of blizzards, these violent winds filled with snow flakes. Plunge into the history of the Australian polar expeditions and discover Commonwealth Bay, by slipping into the shoes of the legendary Douglas Mawson, who created his main base in 1911 in Cape Denison. Marking the border with Marie Byrd Land, the Transantarctic Mountains, extending the Andes, offer this Eden of ice some mountainous landscapes.

Adelie Land covers around 400,000 km² (around 250,000 square miles) of the White Continent between the 136th and 142nd meridians longitude East. These lands claimed by France in Antarctica are home, on Petrel Island, to **Dumont-d 'Urville station**, which is named after the eponymous French explorer who investigated the region in 1840. Here, the few resident scientists share the Antarctic desert with Adelie penguins, seals and orcas, as well as emperor penguins during the winter. The extreme climate of this land at the edge of the world, characterised by its very low temperatures and its violent winds or blizzards, make it difficult to access its shores, which are protected by thick ice floe. Be among the rare people to discover this unique place where you will be captivated by the polar silence and the ice reflecting the rays of the sun as you experience the Southern Continent's powerful fragility.

Day 6 - George V Land

Fall under the spell of the immaculate shores of George V Land, a remote region on the eastern coast of Antarctica. Between monumental ice shelves and infinite white expanses, tabular icebergs slowly drift, revealing their turquoise- and azure-tinged walls. Along the shores of this isolated region, the marine life will reveal itself in all its splendour: orcas, rorquals and humpback whales wander these enchanted waters, offering exceptional encounters in this preserved polar setting.

Day 7 - Adélie Land

Adelie Land covers around 400,000 km² (around 250,000 square miles) of the White Continent between the 136th and 142nd meridians longitude East. These lands claimed by France in Antarctica are home, on Petrel Island, to **Dumont-d 'Urville station**, which is named after the eponymous French explorer who investigated the region in 1840. Here, the few resident scientists share the Antarctic desert with Adelie penguins, seals and orcas, as well as emperor penguins during the winter. The extreme climate of this land at the edge of the world, characterised by its very low temperatures and its violent winds or blizzards, make it difficult to access its shores, which are protected by thick ice floe. Be among the rare people to discover this unique place where you will be captivated by the polar silence and the ice reflecting the rays of the sun as you experience the Southern Continent's powerful fragility.

Day 7 - Wilkes Land

Aboard Le Commandant Charcot, follow in the footsteps of the **American explorer Charles Wilkes**, during his USS Vincennes expedition undertaken between 1838 and 1842. A veritable mine of information for scientists, **this isolated land** - where only moss and lichen have managed to adapt and to take hold, forming the tundra -, promises a unique moment. Under an immaculate white coat, a secret world comes to life: from the **icy mountains** defying the sky to the **vast glaciers**, some of which stretch all the way to the Southern Ocean, and the **icebergs** drifting silently through frozen waters. These landscapes, unlike any other, are sure to captivate you.

Day 8 - Magnetic South Pole

Wild Earth Travel

Small Ships, Big Adventures

0800 945 3327 (within New Zealand) | +64 (0) 3 365 1355 | 1800 107 715 (within Australia)

info@wildearth-travel.com | wildearth-travel.com

Wild Earth Travel

Small Ships, Big Adventures

wildearth-travel.com

info@wildearth-travel.com

The convergence point for the field lines of the Earth's magnetic field, the **Magnetic South Pole** attracts the magnetic needle of the compass. While the Geographic South Pole is the Earth's southernmost fixed point, marking the intersection of the Globe's rotation axis with the Earth's surface, the Magnetic South Pole moves over time. In fact, it is linked to the Earth's magnetic field which originates in the Earth's outer core, which is made up of molten metal and is subject to convection movements. It was during the French Dumont d'Urville expedition to Antarctica, aboard the famous ships L'Astrolabe and La Zelee, that the hydrographer and engineer Vincendon-Dumoulin made the first calculation of the magnetic inclination that enabled him to localise this pole in 1838. Set off in search of the Magnetic South Pole, try to get closer to it and, if luck allows it, attempt to reach it!

Day 9 - At sea aboard Le Commandant Charcot

Spend exceptional moments sailing aboard Le Commandant Charcot, the world's first luxury polar exploration vessel and the first PC2-class polar cruise ship capable of sailing into the very heart of the ice, on seas and oceans which the frozen conditions render inaccessible to ordinary ships. Le Commandant Charcot is fitted with oceanographic and scientific equipment selected by a committee of experts. Take advantage of the on-board lectures and opportunities for discussion with these specialists to learn more about the poles. Participate in furthering scientific research with PONANT and let us discover together what these fascinating destinations have yet to reveal to us.

Days 10 - 12 Wilkes Land

Aboard Le Commandant Charcot, follow in the footsteps of the **American explorer Charles Wilkes**, during his USS Vincennes expedition undertaken between 1838 and 1842. A veritable mine of information for scientists, **this isolated land** - where only moss and lichen have managed to adapt and to take hold, forming the tundra -, promises a unique moment. Under an immaculate white coat, a secret world comes to life: from the **icy mountains** defying the sky to the **vast glaciers**, some of which stretch all the way to the Southern Ocean, and the **icebergs** drifting silently through frozen waters. These landscapes, unlike any other, are sure to captivate you.

Day 13 - Sailing along Shackleton Ice Shelf

During this unique navigation, suspended in time, admire the fantastic spectacle of the Shackleton Ice Shelf. In the luxurious comfort of Le Commandant Charcot, specially designed for polar exploration, the **vast icy expanses of the Antarctic** will unfold before your astonished eyes. The air here is imbued with solemn serenity, only broken by the distant cracking of icebergs drifting along the shelf. You will perhaps have the chance to observe the many mammals, such as the **whales**, **seals** and **penguins**, which prosper in these icy waters.

Day 14 - Wilkes Land

Aboard Le Commandant Charcot, follow in the footsteps of the **American explorer Charles Wilkes**, during his USS Vincennes expedition undertaken between 1838 and 1842. A veritable mine of information for scientists, **this isolated land** - where only moss and lichen have managed to adapt and to take hold, forming the tundra -, promises a unique moment. Under an immaculate white coat, a secret world comes to life: from the **icy mountains** defying the sky to the **vast glaciers**, some of which stretch all the way to the Southern Ocean, and the **icebergs** drifting silently through frozen waters. These landscapes, unlike any other, are sure to captivate you.

Days 15 - 17 At sea aboard Le Commandant Charcot

Spend exceptional moments sailing aboard Le Commandant Charcot, the world's first luxury polar exploration vessel and the first PC2-class polar cruise ship capable of sailing into the very heart of the ice, on seas and oceans which the frozen conditions render inaccessible to ordinary ships. Le Commandant Charcot is fitted with oceanographic and scientific equipment selected by a committee of experts. Take advantage of the on-board lectures and opportunities for discussion with these specialists to learn more about the poles. Participate in furthering scientific research with PONANT and let us discover together what these fascinating destinations have yet to reveal to us.

Day 18 - Queen Maud Land

Dive into the heart of Queen Maud Land, a huge expanse where ice and sea merge endlessly. Impressive glaciers move towards the ocean, accompanied

Wild Earth Travel

Small Ships, Big Adventures

0800 945 3327 (within New Zealand) | +64 (0) 3 365 1355 | 1800 107 715 (within Australia)

info@wildearth-travel.com | wildearth-travel.com

Wild Earth Travel

Small Ships, Big Adventures

wildearth-travel.com

info@wildearth-travel.com

by turquoise- and azure-tinged tabular icebergs. In these waters, seals, orcas and penguin colonies roam freely, offering striking scenes of polar life. Explored by Roald Amundsen and Hjalmar Riiser-Larsen, this region remains remote and intact, with each panorama bearing witness to the raw and preserved power of Antarctica.

Day 19 - At sea aboard Le Commandant Charcot

Spend exceptional moments sailing aboard Le Commandant Charcot, the world's first luxury polar exploration vessel and the first PC2-class polar cruise ship capable of sailing into the very heart of the ice, on seas and oceans which the frozen conditions render inaccessible to ordinary ships. Le Commandant Charcot is fitted with oceanographic and scientific equipment selected by a committee of experts. Take advantage of the on-board lectures and opportunities for discussion with these specialists to learn more about the poles. Participate in furthering scientific research with PONANT and let us discover together what these fascinating destinations have yet to reveal to us.

Day 20 - Queen Maud Land

Dive into the heart of Queen Maud Land, a huge expanse where ice and sea merge endlessly. Impressive glaciers move towards the ocean, accompanied by turquoise- and azure-tinged tabular icebergs. In these waters, seals, orcas and penguin colonies roam freely, offering striking scenes of polar life. Explored by Roald Amundsen and Hjalmar Riiser-Larsen, this region remains remote and intact, with each panorama bearing witness to the raw and preserved power of Antarctica.

Day 21 - At sea aboard Le Commandant Charcot

Spend exceptional moments sailing aboard Le Commandant Charcot, the world's first luxury polar exploration vessel and the first PC2-class polar cruise ship capable of sailing into the very heart of the ice, on seas and oceans which the frozen conditions render inaccessible to ordinary ships. Le Commandant Charcot is fitted with oceanographic and scientific equipment selected by a committee of experts. Take advantage of the on-board lectures and opportunities for discussion with these specialists to learn more about the poles. Participate in furthering scientific research with PONANT and let us discover together what these fascinating destinations have yet to reveal to us.

Days 22 - 24 Queen Maud Land

Dive into the heart of Queen Maud Land, a huge expanse where ice and sea merge endlessly. Impressive glaciers move towards the ocean, accompanied by turquoise- and azure-tinged tabular icebergs. In these waters, seals, orcas and penguin colonies roam freely, offering striking scenes of polar life. Explored by Roald Amundsen and Hjalmar Riiser-Larsen, this region remains remote and intact, with each panorama bearing witness to the raw and preserved power of Antarctica.

Days 25 - 26 Antarctic Peninsula

Succumb to the magic of a place unlike any other. To this day, the mythical **Antarctic Peninsula** still holds real fascination and promises its visitors unforgettable moments. Throughout your adventure in this icy realm, you will find yourself in the heart of a **spectacular decor** in subtle shades of blue and white, surrounded by **exceptional wildlife**. Penguins, humpback whales, seals and giant petrels are at home here, as are elephant seals, fur seals, Antarctic minke whales, and orcas. Depending on which sites you will be lucky enough to visit, you may get the chance to observe them and share with them the beauty of these extreme parts.

Each day, based on ice conditions, the Captain and the Expedition Leader will suggest **zodiac outings or landings** to discover the infinite riches of the Antarctic Peninsula. Glaciers, ice floe, tabletop icebergs, mountain peaks that plunge straight into the sea, volcanic beaches, research stations, enchanting bays, and vestiges of the whaling industry: these are the faces of the Antarctic that will likely reveal themselves to you, in a hushed and surreal atmosphere. You will sail in the wake of Jean-Baptiste Charcot, Adrien de Gerlache and Sir Ernest Shackleton, great Antarctic explorers who, from the 19th century, set out to conquer these remote and uninhabited lands.

Day 27 - Endurance wreck site

In 1915, Endurance, the famous three-masted schooner that transported Ernest Shackleton and his 27-man crew to the Antarctic, became trapped in pack ice and sank into the depths of the Weddell Sea. For 107 years, these waters nicknamed by Shackleton as "the worst sea in the world" kept the wreck's location secret. This symbol of polar adventure was rediscovered in 2022, lying over 3,000 metres (almost 10,000 feet) deep. Aboard Le

Wild Earth Travel

Small Ships, Big Adventures

0800 945 3327 (within New Zealand) | +64 (0) 3 365 1355 | 1800 107 715 (within Australia)

info@wildearth-travel.com | wildearth-travel.com



Wild Earth Travel

Small Ships, Big Adventures



wildearth-travel.com

info@wildearth-travel.com

Commandant Charcot, follow the pack ice in the heart of the floe and glide over the seabed on which this legend rests, to relive the great era of the explorers.

Day 28 - Antarctic Peninsula

Succumb to the magic of a place unlike any other. To this day, the mythical **Antarctic Peninsula** still holds real fascination and promises its visitors unforgettable moments. Throughout your adventure in this icy realm, you will find yourself in the heart of a **spectacular decor** in subtle shades of blue and white, surrounded by **exceptional wildlife**. Penguins, humpback whales, seals and giant petrels are at home here, as are elephant seals, fur seals, Antarctic minke whales, and orcas. Depending on which sites you will be lucky enough to visit, you may get the chance to observe them and share with them the beauty of these extreme parts.

Each day, based on ice conditions, the Captain and the Expedition Leader will suggest **zodiac outings or landings** to discover the infinite riches of the Antarctic Peninsula. Glaciers, ice floe, tabletop icebergs, mountain peaks that plunge straight into the sea, volcanic beaches, research stations, enchanting bays, and vestiges of the whaling industry: these are the faces of the Antarctic that will likely reveal themselves to you, in a hushed and surreal atmosphere. You will sail in the wake of Jean-Baptiste Charcot, Adrien de Gerlache and Sir Ernest Shackleton, great Antarctic explorers who, from the 19th century, set out to conquer these remote and uninhabited lands.

Days 29 - 30 At sea aboard Le Commandant Charcot

Spend exceptional moments sailing aboard Le Commandant Charcot, the world's first luxury polar exploration vessel and the first PC2-class polar cruise ship capable of sailing into the very heart of the ice, on seas and oceans which the frozen conditions render inaccessible to ordinary ships. Le Commandant Charcot is fitted with oceanographic and scientific equipment selected by a committee of experts. Take advantage of the on-board lectures and opportunities for discussion with these specialists to learn more about the poles. Participate in furthering scientific research with PONANT and let us discover together what these fascinating destinations have yet to reveal to us.

Day 31 - Ushuaia

Capital of Argentina's **Tierra del Fuego** province, Ushuaia is considered the gateway to the White Continent and the South Pole. Nicknamed "**El fin del mundo**" by the Argentinian people, this city at the end of the world nestles in the shelter of mountains surrounded by fertile plains that the wildlife seem to have chosen as the ultimate sanctuary. With its exceptional site, where the Andes plunge straight into the sea, Ushuaia is one of the most fascinating places on earth, its very name evocative of journeys to the unlikely and the inaccessible...

Please note:

Itineraries are subject to change.

Wild Earth Travel

Small Ships, Big Adventures

0800 945 3327 (within New Zealand) | +64 (0) 3 365 1355 | 1800 107 715 (within Australia)

info@wildearth-travel.com | wildearth-travel.com

Wild Earth Travel

Small Ships, Big Adventures



wildearth-travel.com

info@wildearth-travel.com

YOUR SHIP: LE COMMANDANT-CHARCOT

YOUR SHIP:	Le Commandant-Charcot
VESSEL TYPE:	Polar Luxury Expedition
LENGTH:	149.9 meters
PASSENGER CAPACITY:	135 cabins
BUILT/REFURBISHED:	2018/2019

Le Commandant Charcot is a purpose-built polar exploration vessel engineered for extreme environments, operating with a hybrid electric-LNG system that reduces noise, vibration and emissions while pushing deeper into ice than conventional ships. Interior spaces follow a restrained, insulated design philosophy that supports comfort in high-latitude conditions: multiple lounges, refined dining rooms, theatre, boutique and extensive wellness areas arranged to maintain warmth, calm and controlled movement throughout the ship. Accommodation spans 123 staterooms and suites, all with balconies, with upper-tier suites extending up to 115 m².

The vessel integrates dedicated scientific infrastructure into its core layout, including laboratories and working spaces that support ongoing polar research. Field operations and environmental systems are engineered from the ground up for low-impact navigation, aligning with the ship's mandate to access remote polar areas responsibly. A full virtual deck plan and live bow-mounted webcam reinforce the ship's emphasis on landscape immersion and transparency of experience.

Read About Our Experience on Board Le Commandant Charcot

It's All About the Destination... And This Ship



d This Ship

Wild Earth Travel
Small Ships, Big Adventures

0800 945 3327 (within New Zealand) | +64 (0) 3 365 1355 | 1800 107 715 (within Australia)

info@wildearth-travel.com | wildearth-travel.com

Wild Earth Travel

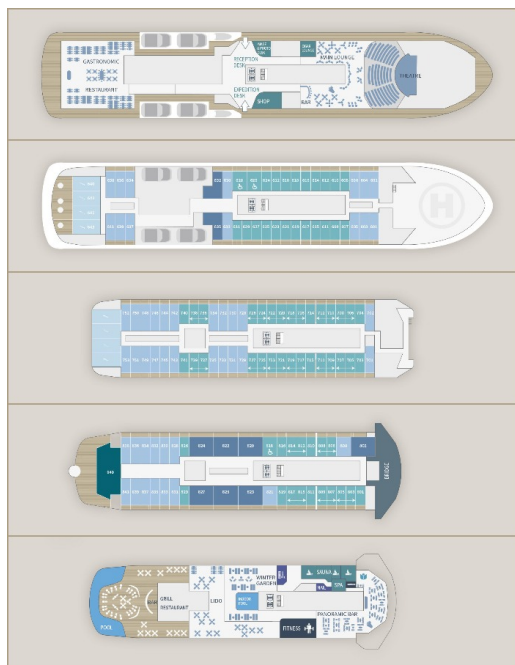
Small Ships, Big Adventures



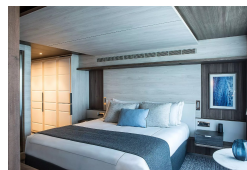
wildearth-travel.com

info@wildearth-travel.com

INSIDE YOUR SHIP



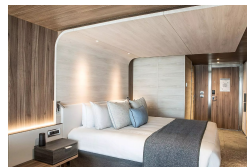
Deluxe Suite Deck 6



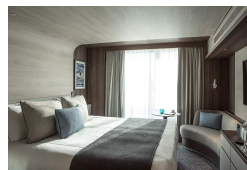
Deluxe Suite Deck 8



Grand Prestige Suite



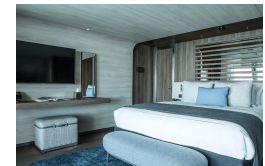
Prestige Stateroom Deck 6



Deluxe Suite Deck 7



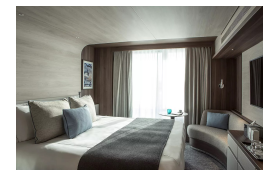
Duplex Suite



Owner's Suite



Prestige Stateroom Deck 7



Wild Earth Travel

Small Ships, Big Adventures



wildearth-travel.com

info@wildearth-travel.com

PRICING

11-Feb-2028 to 12-Mar-2028

Prestige Stateroom Deck 6	110647 AUD pp
Prestige Stateroom Deck 7	112836 AUD pp
Prestige Stateroom Deck 8	115036 AUD pp
Deluxe Suite Deck 6	118303 AUD pp
Deluxe Suite Deck 7	123781 AUD pp
Deluxe Suite Deck 8	128159 AUD pp
Grand Prestige Suite	187240 AUD pp
Prestige Suite Deck 7	202552 AUD pp
Prestige Suite Deck 8	205852 AUD pp
Privilege Suite Deck 8	209119 AUD pp
Duplex Suite	258366 AUD pp
Owner's Suite	307613 AUD pp

Wild Earth Travel

Small Ships, Big Adventures

0800 945 3327 (within New Zealand) | +64 (0) 3 365 1355 | 1800 107 715 (within Australia)

info@wildearth-travel.com | wildearth-travel.com



Wild Earth Travel

Small Ships, Big Adventures



wildearth-travel.com

info@wildearth-travel.com

SPECIAL OFFERS

Online prices reflect the current brochure fare savings of up to 30%. Prices may change based on demand. Terms and conditions apply. This special offer is subject to availability. Please contact us for more details.



Wild Earth Travel

Small Ships, Big Adventures

0800 945 3327 (within New Zealand) | +64 (0) 3 365 1355 | **1800 107 715** (within Australia)

info@wildearth-travel.com | wildearth-travel.com