



Wild Earth Travel

Small Ships, Big Adventures



wildearth-travel.com

info@wildearth-travel.com

UNEXPLORED EAST ANTARCTICA & FRENCH SOUTHERN LANDS - LUXURY EXPEDITION

The theatre of mythical expeditions and a refuge for fascinating wildlife that is among the wildest on the planet, East Antarctica is still home to unexplored regions. Enjoy many moments of intense emotions on this 29-day half-circumnavigation of Antarctica, connecting Tasmania to the south of Africa, from the Pacific Ocean to the Atlantic Ocean, aboard Le Commandant Charcot, an enveloping cocoon shaped for the highest polar latitudes.

In these preserved lands, the icebergs drift majestically in sparkling waters, while the glaciers slowly flow, revealing the millennia-old secrets they have long kept. An ultimate quest and the promise of unforgettable and novel encounters in the footsteps of the greatest explorers, like Jules Dumont d'Urville, Erich von Drygalski or Douglas Mawson, the Australian legend of polar expedition who wintered at Cape Denison. Throughout your journey, our team of passionate experts will go over all the details of these historic exploits with you while sharing their knowledge of the wildlife and landscapes.

From Hobart, the departure point of many an emblematic polar expedition, set off on a unique polar odyssey, at the boundaries of the world, to admire all this singular territory's natural treasures. During this unforgettable exploration, paced by the ice conditions between coastal ice floe, drifting icebergs and the largest polar icecap in the world - the Inlandsis in East Antarctica -, you will journey into this isolated region and make your way past the Australian research stations, Casey and Davis. Fascinating, bewitching, dizzying... there is no shortage of

superlatives to describe Antarctica! In the icy depths of the Southern Ocean, mountains of ice rise like eternal sentinels, and Adelie penguins watch over the ice floe while humpback whales and orcas seem to guide the spirits towards unexplored horizons.

As you sail on to explore the eastern side of the White Continent, the ice floe and the ice disappear to make way for open-water navigation. Le Commandant Charcot will leave the Southern Ocean behind and you will perhaps have the chance to reach the French Southern and Antarctic Lands, in the wake of the great explorers who came from Europe in search of Terra Australis Incognita, such as Julien Crozet, Marc Marion Dufresne, Yves de Kerguelen or James Cook. During this all-new cruise in Antarctica, your senses will sharpen and you will be magnetised by the spectacle of the sparkling ice floe, the majestic tabular icebergs, the monumental ice shelves and the spectacular polar icecap. A unique moment, suspended in time, where the beauty of the White Continent is revealed in its full splendour.



Wild Earth Travel

Small Ships, Big Adventures

0800 945 3327 (within New Zealand) | +64 (0) 3 365 1355 | 1800 107 715 (within Australia)

info@wildearth-travel.com | wildearth-travel.com

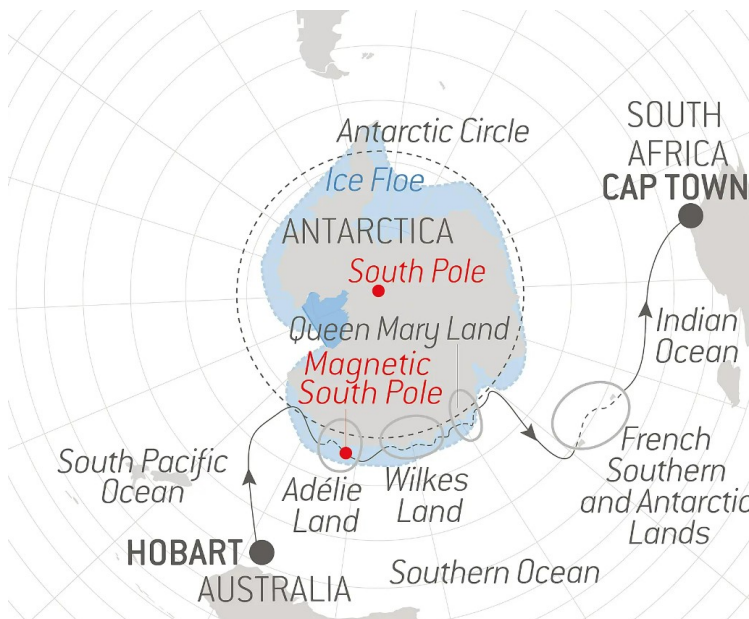
Wild Earth Travel

Small Ships, Big Adventures



wildearth-travel.com

info@wildearth-travel.com



Spend exceptional moments sailing aboard *Le Commandant Charcot*, the world's first luxury polar exploration vessel and the first PC2-class polar cruise ship capable of sailing into the very heart of the ice, on seas and oceans which the frozen conditions render inaccessible to ordinary ships. *Le Commandant Charcot* is fitted with oceanographic and scientific equipment selected by a committee of experts. Take advantage of the on-board lectures and opportunities for discussion with these specialists to learn more about the poles. Participate in furthering scientific research with PONANT and let us discover together what these fascinating destinations have yet to reveal to us.

Days 6 - 7 ADÉLIE LAND

Adelie Land covers around 400,000 km² (around 250,000 square miles) of the White Continent between the 136th and 142nd meridians longitude East. These lands claimed by France in Antarctica are home, on Petrel Island, to Dumont-d'Urville station, which is named after the eponymous French explorer who investigated the region in 1840. Here, the few resident scientists share the Antarctic desert with Adelie penguins, seals and orcas, as well as emperor penguins during the winter. The extreme climate of this land at the edge of the world, characterised by its very low temperatures and its violent winds or blizzards, make it difficult to access its shores, which are protected by thick ice floe. Be among the rare people to discover this unique place where you will be captivated by the polar silence and the ice reflecting the rays of the sun as you experience the Southern Continent's powerful fragility.

Day 8 MAGNETIC SOUTH POLE

The convergence point for the field lines of the Earth's magnetic field, the Magnetic South Pole attracts the magnetic needle of the compass. While the Geographic South Pole is the Earth's southernmost fixed point, marking the intersection of the Globe's rotation axis with the Earth's surface, the Magnetic South Pole moves over time. In fact, it is linked to the Earth's magnetic field which originates in the Earth's outer core, which is made up of molten metal and is subject to convection movements. It was during the French Dumont

splendour.

ITINERARY

Day 1 HOBART, TASMANIA

Hobart occupies a wonderful location at the mouth of the Derwent River, overseen by majestic Mt Wellington and surrounded by natural bushland. The Tasmanian capital is Australia's second-oldest city, after Sydney, and the picturesque waterfront is bordered by 19th-century warehouses and colonial mansions. Salamanca Place is packed with shops, galleries and restaurants and the fascinating Museum of Old and New Art (MONA) is a short ferry ride from the quay. Hobart is within easy reach of some of Tasmania's best-known destinations, from historic Port Arthur and the rugged Tasman Peninsula to Bruny Island, the Huon and Derwent Valleys and Mount Field National Park.

Days 2 - 5 AT SEA ABOARD LE COMMANDANT CHARCOT

Wild Earth Travel

Small Ships, Big Adventures

0800 945 3327 (within New Zealand) | +64 (0) 3 365 1355 | 1800 107 715 (within Australia)

info@wildearth-travel.com | wildearth-travel.com

Wild Earth Travel

Small Ships, Big Adventures



wildearth-travel.com

info@wildearth-travel.com

d'Urville expedition to Antarctica, aboard the famous ships L'Astrolabe and La Zeele, that the hydrographer and engineer Vincendon-Dumoulin made the first calculation of the magnetic inclination that enabled him to localise this pole in 1838. Set off in search of the Magnetic South Pole, try to get closer to it and, if luck allows it, attempt to reach it!

Days 9 - 10 ADÉLIE LAND

Adelie Land covers around 400,000 km² (around 250,000 square miles) of the White Continent between the 136th and 142nd meridians longitude East. These lands claimed by France in Antarctica are home, on Petrel Island, to Dumont-d'Urville station, which is named after the eponymous French explorer who investigated the region in 1840. Here, the few resident scientists share the Antarctic desert with Adelie penguins, seals and orcas, as well as emperor penguins during the winter. The extreme climate of this land at the edge of the world, characterised by its very low temperatures and its violent winds or blizzards, make it difficult to access its shores, which are protected by thick ice floe. Be among the rare people to discover this unique place where you will be captivated by the polar silence and the ice reflecting the rays of the sun as you experience the Southern Continent's powerful fragility.

Days 11 - 12 WILKES LAND

Aboard Le Commandant Charcot, follow in the footsteps of the American explorer Charles Wilkes, during his USS Vincennes expedition undertaken between 1838 and 1842. A veritable mine of information for scientists, this isolated land - where only moss and lichen have managed to adapt and to take hold, forming the tundra -, promises a unique moment. Under an immaculate white coat, a secret world comes to life: from the icy mountains defying the sky to the vast glaciers, some of which stretch all the way to the Southern Ocean, and the icebergs drifting silently through frozen waters. These landscapes, unlike any other, are sure to captivate you.

Day 13 SAILING ALONG SHACKLETON ICE SHELF

During this unique navigation, suspended in time, admire the fantastic spectacle of the Shackleton Ice Shelf. In the luxurious comfort of Le Commandant Charcot, specially designed for polar exploration, the vast icy expanses of the Antarctic will unfold before your astonished eyes. The air here is imbued with solemn serenity, only broken by the distant cracking of icebergs drifting along the shelf. You will perhaps have the chance to observe the many mammals, such as the whales, seals and penguins, which prosper in these icy waters.

Days 14 - 16 QUEEN MARY LAND

On the eastern shores of Antarctica, between Cape Filchner and Cape Hordern, admire the captivating landscapes of Queen Mary Land, recounting stories of legendary explorations. In the heart of this region, discovered in 1912, during Douglas Mawson's Antarctic expedition, mountains of ice rise like giant sculptures, sparkling beneath the rays of the southern sun. The glaciers wind their way like rivers of glass, shaping sumptuous scenery. In this frozen kingdom, colonies of emperor penguins gather on the shores and leopard seals bask on the ice floe while whales slip graciously through its waters.

Days 17 - 19 AT SEA ABOARD LE COMMANDANT CHARCOT

Spend exceptional moments sailing aboard Le Commandant Charcot, the world's first luxury polar exploration vessel and the first PC2-class polar cruise ship capable of sailing into the very heart of the ice, on seas and oceans which the frozen conditions render inaccessible to ordinary ships. Le Commandant Charcot is fitted with oceanographic and scientific equipment selected by a committee of experts. Take advantage of the on-board lectures and opportunities for discussion with these specialists to learn more about the poles. Participate in furthering scientific research with PONANT and let us discover together what these fascinating destinations have yet to reveal to us.

Days 20 - 21 FRENCH SOUTHERN AND ANTARCTIC LANDS

Wild Earth Travel

Small Ships, Big Adventures

0800 945 3327 (within New Zealand) | +64 (0) 3 365 1355 | 1800 107 715 (within Australia)

info@wildearth-travel.com | wildearth-travel.com



Wild Earth Travel

Small Ships, Big Adventures



wildearth-travel.com

info@wildearth-travel.com

In the icy immensity of the Antarctic, between the 37th and 50th parallels south, the French Southern and Antarctic Lands encompass the largest emerged lands in the southern Indian Ocean, from the Crozet archipelago to the Kerguelen Islands. In the wake of the greatest European explorers, like Julien Crozet, Marc Marion Dufresne or James Cook, who sought out Terra Australis Incognita, you will explore these volcanic lands, which are a UNESCO World Heritage Site. In these sanctuaries of biodiversity which represent unique terrain for scientific research, majestic icebergs stand like ephemeral sculptures, silent witnesses of the passing of time, while king penguins or elephant seals, the lords of these inhospitable lands, populate the beaches with their gigantic colonies.

Day 22 AT SEA ABOARD LE COMMANDANT CHARCOT

Spend exceptional moments sailing aboard Le Commandant Charcot, the world's first luxury polar exploration vessel and the first PC2-class polar cruise ship capable of sailing into the very heart of the ice, on seas and oceans which the frozen conditions render inaccessible to ordinary ships. Le Commandant Charcot is fitted with oceanographic and scientific equipment selected by a committee of experts. Take advantage of the on-board lectures and opportunities for discussion with these specialists to learn more about the poles. Participate in furthering scientific research with PONANT and let us discover together what these fascinating destinations have yet to reveal to us.

Day 23 FRENCH SOUTHERN AND ANTARCTIC LANDS

In the icy immensity of the Antarctic, between the 37th and 50th parallels south, the French Southern and Antarctic Lands encompass the largest emerged lands in the southern Indian Ocean, from the Crozet archipelago to the Kerguelen Islands. In the wake of the greatest European explorers, like Julien Crozet, Marc Marion Dufresne or James Cook, who sought out Terra Australis Incognita, you will explore these volcanic lands, which are a UNESCO World Heritage Site. In these sanctuaries of biodiversity which represent unique terrain for scientific research, majestic icebergs stand like ephemeral sculptures, silent witnesses of the passing of time, while king penguins or

elephant seals, the lords of these inhospitable lands, populate the beaches with their gigantic colonies.

Days 24 - 28 AT SEA ABOARD LE COMMANDANT CHARCOT

Spend exceptional moments sailing aboard Le Commandant Charcot, the world's first luxury polar exploration vessel and the first PC2-class polar cruise ship capable of sailing into the very heart of the ice, on seas and oceans which the frozen conditions render inaccessible to ordinary ships. Le Commandant Charcot is fitted with oceanographic and scientific equipment selected by a committee of experts. Take advantage of the on-board lectures and opportunities for discussion with these specialists to learn more about the poles. Participate in furthering scientific research with PONANT and let us discover together what these fascinating destinations have yet to reveal to us.

Day 29 CAPE TOWN

Dynamic and peaceful, cosmopolitan and hip, Cape Town offers its visitors a most unique mix. Here, the locals like to say that their city is "the quintessential melting pot of South Africa". Located in the heart of one of the most beautiful bays in the world and dominated by the famous Table Mountain, it is graced with extraordinary landscapes including sheer cliffs that plunge into the Atlantic Ocean and vast whitesand beaches. We invite you to discover this incredible city, the South African capital of fashion, the art of living, and gastronomy. Further on, the Cape of Good Hope Nature Reserve awaits you and is home to a wide variety of endemic fauna and flora.

Please note:

We are privileged guests in these extreme lands where we are at the mercy of weather and ice conditions. Our navigation will be determined by the type of ice we come across; as the fast ice must be preserved, we will take this factor into account from day to day in our itineraries. The sailing schedule and any landings, activities and wildlife encounters are subject to weather and ice conditions. These experiences are unique and vary with each departure. The Captain and the Expedition Leader will make every effort to ensure that your

Wild Earth Travel

Small Ships, Big Adventures

0800 945 3327 (within New Zealand) | +64 (0) 3 365 1355 | 1800 107 715 (within Australia)

info@wildearth-travel.com | wildearth-travel.com



Wild Earth Travel

Small Ships, Big Adventures



wildearth-travel.com

info@wildearth-travel.com

experience is as rich as possible, while respecting safety instructions and regulations imposed by the IAATO.



Wild Earth Travel

Small Ships, Big Adventures

0800 945 3327 (within New Zealand) | +64 (0) 3 365 1355 | **1800 107 715** (within Australia)

info@wildearth-travel.com | **wildearth-travel.com**



Wild Earth Travel

Small Ships, Big Adventures



wildearth-travel.com

info@wildearth-travel.com

YOUR SHIP: LE COMMANDANT-CHARCOT

YOUR SHIP:	Le Commandant-Charcot
VESSEL TYPE:	Polar Luxury Expedition
LENGTH:	149.9 meters
PASSENGER CAPACITY:	135 cabins
BUILT/REFURBISHED:	2018/2019

Be the first aboard Le Commandant-Charcot, the world's luxury polar exploration vessel, and enjoy a unique sailing experience in the Arctic or Antarctic!

With its hybrid propulsion combining liquefied natural gas (LNG) and electric generators, Le Commandant-Charcot has been designed to minimise the environmental impact of travel to the furthest latitudes.

The decoration of the ship, imagined by two internationally renowned design and architecture firms - the studio of Jean-Philippe Nuel and Wilmotte & Associates - is designed to be in harmony with the environment. The approach is contemporary with the desire to create a warm and elegant setting; stone, wood and leather recall the natural environment in which the ship is sailing.

Equipped with just 135 staterooms including 31 suites with balconies and outside views, Le Commandant-Charcot welcomes you in an intimate and refined atmosphere. Outstanding gastronomy in the two restaurants, relaxation in the indoor pool surrounded by its winter garden, relaxation in the well-being area with sauna and Snow Room... Like on a private yacht, each of our guests is unique.

PUBLIC AREAS

Le Commandant-Charcot has many common areas that are designed and equipped to meet all of your needs while preserving the intimacy of each passenger.

A 177 m² reception area includes: A reception/concierge desk, An expeditions desk, The ship's administrative services, The sales office, manned by our Hospitality & Travel Manager officer, Our boutique which sells clothing, jewellery, beauty products, postcards and various accessories, The image & photo desk.

The different lounges: A 302 m² main lounge including a 28 m² cigar lounge, a tea corner and a bar, with live music on selected evenings, A 400 m² panoramic bar and lounge, An open-air Bar. The recreation spaces

Fitness & Beauty Corner: Fitness room: Elliptic, running machines, bicycles...

Beauty Corner: Hairdresser, Massage rooms, Sauna, Snow Room, Nail Shop.

Pool area: Indoor Pool and winter garden - Outdoor Pool

Theatre: Capacity: 270-276 - Main show room for conferences and live entertainment on selected evenings - State-of-the-art audio and video technology.

Leisure area: Public areas - Library - Medical centre.

16 Zodiac®.



Wild Earth Travel

Small Ships, Big Adventures

0800 945 3327 (within New Zealand) | +64 (0) 3 365 1355 | **1800 107 715** (within Australia)

info@wildearth-travel.com | wildearth-travel.com

Wild Earth Travel

Small Ships, Big Adventures



wildearth-travel.com

info@wildearth-travel.com



16 Zodiac®.

Wild Earth Travel

Small Ships, Big Adventures

0800 945 3327 (within New Zealand) | +64 (0) 3 365 1355 | 1800 107 715 (within Australia)

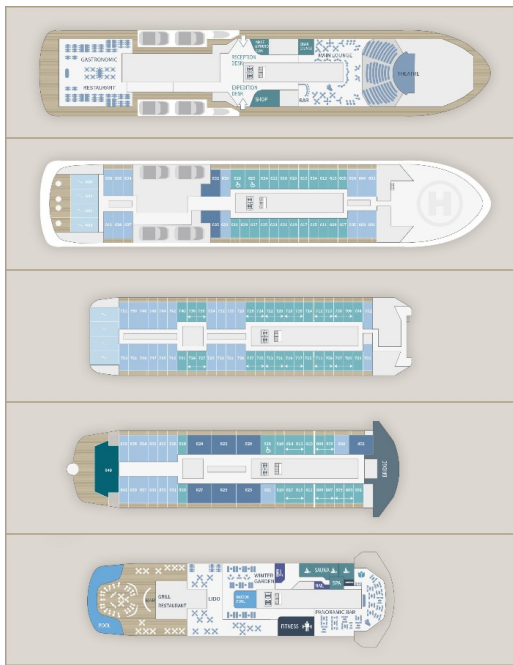
info@wildearth-travel.com | wildearth-travel.com



wildearth-travel.com

info@wildearth-travel.com

INSIDE YOUR SHIP



Deluxe Suite Deck 6



Deluxe Suite Deck 8



Owner's Suite



Prestige Stateroom Deck 7



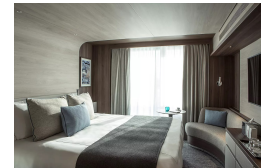
Deluxe Suite Deck 7



Grand Prestige Suite



Prestige Stateroom Deck 6



Prestige Stateroom Deck 8



Wild Earth Travel

Small Ships, Big Adventures



wildearth-travel.com

info@wildearth-travel.com

PRICING

17-Feb-2026 to 17-Mar-2026

Prestige Stateroom Deck 6	85400 AUD pp
Prestige Stateroom Deck 7	87110 AUD pp
Prestige Stateroom Deck 8	88820 AUD pp
Deluxe Suite Deck 6	91380 AUD pp
Deluxe Suite Deck 7	95670 AUD pp
Deluxe Suite Deck 8	99090 AUD pp
Prestige Suite Deck 7	128180 AUD pp
Prestige Suite Deck 8	132450 AUD pp
Grand Prestige Suite	136740 AUD pp
Privilege Suite Deck 8	145300 AUD pp
Suite Duplex	200920 AUD pp
Owner's Suite	239410 AUD pp

ADDITIONAL CHARGES:

Port Taxes & Fees 2070 AUD pp

Wild Earth Travel

Small Ships, Big Adventures

0800 945 3327 (within New Zealand) | +64 (0) 3 365 1355 | 1800 107 715 (within Australia)

info@wildearth-travel.com | wildearth-travel.com



Wild Earth Travel

Small Ships, Big Adventures



wildearth-travel.com

info@wildearth-travel.com

SPECIAL OFFER

Online prices reflect the current brochure fare savings of up to 30%. Prices may change based on demand. Terms and conditions apply. This special offer is subject to availability. Please contact us for more details.



Wild Earth Travel

Small Ships, Big Adventures

0800 945 3327 (within New Zealand) | +64 (0) 3 365 1355 | 1800 107 715 (within Australia)

info@wildearth-travel.com | wildearth-travel.com