

Wild Earth Travel

Small Ships, Big Adventures

wildearth-travel.com

info@wildearth-travel.com

THE LONG WAY CRUISE: FROM BUENOS AIRES TO USHUAIA

The long way to Antarctica luxury cruise starts in Argentina's vibrant capital, Buenos Aires, known as 'The Paris of South America.' From there, the journey ventures to the Falklands before reaching the awe-inspiring Antarctic Peninsula. This thrilling expedition concludes in Ushuaia, marking a captivating cruise through some of the world's most remote and striking landscapes. En route, explorers will visit a myriad of fascinating locations. Islands such as Saunders Island offer encounters with unique wildlife, including black-browed albatrosses and rockhopper penguins amid rugged beauty. Port Stanley in the Falklands echoes British charm, while South Georgia dazzles with its stunning king penguin colonies. The Antarctic Peninsula reveals magnificent glaciers and islands brimming with Adelie penguins. Throughout the "Long Arc to Antarctica luxury cruise", guests can dive into a wealth of activities. Sea days are perfect for relaxation, with observation decks offering panoramic ocean views. Engaging lectures and photography workshops enhance the voyage. The adventurous can embark on exhilarating kayaking expeditions amid Antarctic waters, making the journey even more memorable and immersive.



ITINERARY

Days 0 - 1 Pre Cruise & Buenos Aires

Argentina's cosmopolitan capital, often dubbed 'The Paris of South America,' is a city of diverse neighbourhoods (barrios) and vibrant cafe culture. Each district has its own character - none more so than colourful La Boca, where tango dancers perform in the streets. The handsome district of Recoleta is famous for the cemetery where Eva 'Evita' Peron is buried, while ships dock into the regenerated waterfront barrio Puerto Madero.

Days 2-4 Day at sea

Wild Earth Travel

Small Ships, Big Adventures

0800 945 3327 (within New Zealand) | +64 (0) 3 365 1355 | **1800 107 715** (within Australia)

info@wildearth-travel.com | **wildearth-travel.com**

Wild Earth Travel

Small Ships, Big Adventures

wildearth-travel.com

info@wildearth-travel.com

Sea days are rarely dull. Take the time to sit back and let the world go by. The ship's observation decks provide stunning views of the passing ocean. A day at sea gives you the opportunity to mingle with other passengers and share your experiences of this incredible trip or head to our library which is stocked full of reference books. Get an expert's view in one of our on-board lectures or perhaps perfect your photography skills with invaluable advice from our onboard professional photographers.

Day 5 Saunders Island

Black-browed albatross grace the skies over this remote Falkland Island, while Commerson's dolphins play in its waters. With a sparse population of people and sheep, the island is also a sanctuary for fur seals, rockhopper penguins, Magellanic penguins and imperial cormorants, nesting amid its cliffs and the impressive Cliff Mountain. Hiking through the moss-covered terrain unveils beautiful wildflowers like pink-petalled Felton's.

Day 6 Port Stanley

Anyone familiar with Britain's trademark red post boxes might spot a resemblance in this British outpost. Port Stanley, on East Falkland, is the tiny capital of the Falkland Islands and is small enough to get around on foot. The Historic Dockyard Museum is devoted to maritime history and exploration. Magellanic penguins gather on the beach at nearby Gypsy Cove, and sea lions and dolphins frolic in the harbour.

Days 7-8 Day at sea

Sea days are rarely dull. Take the time to sit back and let the world go by. The ship's observation decks provide stunning views of the passing ocean. A day at sea gives you the opportunity to mingle with other passengers and share your experiences of this incredible trip or head to our library which is stocked full of reference books. Get an expert's view in one of our on-board lectures or perhaps perfect your photography skills with invaluable advice from our

onboard professional photographers.

Days 9-10 South Georgia

Often called the 'Galapagos of the Poles,' South Georgia has a number of landing sites with tens of thousands of King Penguins and gentoo penguins, making up some of the largest populations in the world alongside harrumphing elephant seals. Among its remarkable sites is Grytviken, the historic whaling station where legendary British explorer Ernest Shackleton (1874-1922) is laid to rest.

Days 11-12 Day at sea

Sea days are rarely dull. Take the time to sit back and let the world go by. The ship's observation decks provide stunning views of the passing ocean. A day at sea gives you the opportunity to mingle with other passengers and share your experiences of this incredible trip or head to our library which is stocked full of reference books. Get an expert's view in one of our on-board lectures or perhaps perfect your photography skills with invaluable advice from our onboard professional photographers.

Days 13-15 Antarctic Peninsula

Among captivating glaciers, majestic icebergs and snowy islands, the Antarctic Peninsula is where most visitors to the White Continent live their Antarctica dream. It's the most accessible part, with scientific bases and incredible scenery, like the photogenic Lemaire Channel. Shore excursions might include Mikkelsen Harbour, where among gentoo penguins, snowy sheathbills and skuas, Antarctic Weddell seals haul out.

Days 16-17 Day at sea

Sea days are rarely dull. Take the time to sit back and let the world go by. The ship's observation decks provide stunning views of the passing ocean. A day at

Wild Earth Travel

Small Ships, Big Adventures

0800 945 3327 (within New Zealand) | +64 (0) 3 365 1355 | **1800 107 715** (within Australia)

info@wildearth-travel.com | wildearth-travel.com



Wild Earth Travel

Small Ships, Big Adventures

wildearth-travel.com

info@wildearth-travel.com

sea gives you the opportunity to mingle with other passengers and share your experiences of this incredible trip or head to our library which is stocked full of reference books. Get an expert's view in one of our on-board lectures or perhaps perfect your photography skills with invaluable advice from our onboard professional photographers.

Day 18 Ushuaia

Nestled in the foothills of the snow-capped Martial Range, Ushuaia's colourful streets and mismatched buildings cascade from the imposing mountains before coming to an abrupt halt at the shores of the Beagle Channel. As one of the world's southernmost cities, Ushuaia carries its 'end of the world' reputation well. The moody weather and dramatic surroundings certainly help. Board your boutique ship before departing for your journey through one of the most captivating wilderness regions of the world.

Please note:

Itineraries are subject to change.



Wild Earth Travel

Small Ships, Big Adventures

wildearth-travel.com

info@wildearth-travel.com

YOUR SHIP: MINERVA

YOUR SHIP:	Minerva
VESSEL TYPE:	Expedition Ship
LENGTH:	115 meters
PASSENGER CAPACITY:	158
BUILT/REFURBISHED:	2020-2021

The SH Minerva is a boutique expedition ship purpose-built for exploring far-flung destinations and remote polar regions in comfort and style. Crafted at Finland's esteemed Helsinki Shipyard, she features a Polar Class PC5 ice-strengthened hull and advanced stabilisers, ensuring smooth sailing even in challenging waters. With just 158 guests served by 122 crew across nine decks, the atmosphere on board is intimate and welcoming. Elegant Scandinavian-inspired interiors, panoramic observation spaces, and a range of facilities - from the stargazing deck and library to the spa, heated outdoor pool, and fine dining venues - make every moment at sea a pleasure.

Accommodation ranges from well-appointed oceanview staterooms to spacious premium suites, each offering thoughtful touches such as a flame-effect fireplace, Illy espresso machine, luxury toiletries, and complimentary binoculars for wildlife spotting. Many feature private balconies for uninterrupted views of the passing scenery. Attentive crew provide a warm, personalised service, ensuring that every guest feels at home while enjoying a journey that blends adventure with refined comfort. Whether navigating icy channels or gliding into sunlit harbours, the SH Minerva offers an unforgettable cruising

experience.



experience.

Wild Earth Travel
Small Ships, Big Adventures

0800 945 3327 (within New Zealand) | +64 (0) 3 365 1355 | **1800 107 715** (within Australia)

info@wildearth-travel.com | **wildearth-travel.com**

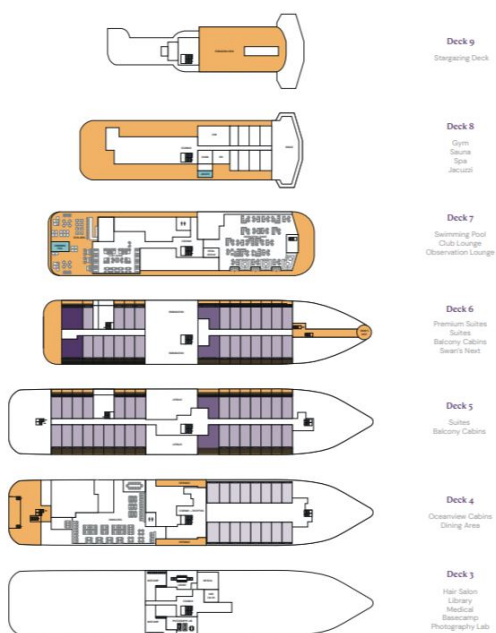
Wild Earth Travel

Small Ships, Big Adventures

wildearth-travel.com

info@wildearth-travel.com

INSIDE YOUR SHIP



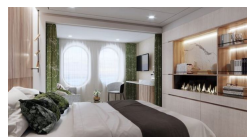
Balcony D5



Balcony M5



Oceanview D4



Oceanview M4



Premium Suite



Suite



Wild Earth Travel
Small Ships, Big Adventures

0800 945 3327 (within New Zealand) | +64 (0) 3 365 1355 | 1800 107 715 (within Australia)

info@wildearth-travel.com | wildearth-travel.com



Wild Earth Travel

Small Ships, Big Adventures



wildearth-travel.com

info@wildearth-travel.com

PRICING

14-Nov-2025 to 01-Dec-2025

Oceanview D4	22500 AUD pp
Oceanview M4	23625 AUD pp
Balcony D5	24750 AUD pp
Balcony M5	25875 AUD pp
Suite	39850 AUD pp
Premium Suite	45475 AUD pp

Wild Earth Travel
Small Ships, Big Adventures

0800 945 3327 (within New Zealand) | +64 (0) 3 365 1355 | **1800 107 715** (within Australia)

info@wildearth-travel.com | **wildearth-travel.com**