

Wild Earth Travel

Small Ships, Big Adventures

wildearth-travel.com

info@wildearth-travel.com

ECHOES OF THE DEEP: A 13-DAY WHALE & SCIENCE EXPEDITION IN ANTARCTICA

This expedition is designed as a working platform for science, offering a rare opportunity to observe how whale research is conducted in one of the most remote ecosystems on Earth. Throughout the voyage, researchers will conduct field studies aimed at improving our understanding of whale presence, behavior, and the broader Southern Ocean ecosystem.

Guests will have the chance to witness science in action and gain insight into how researchers collect, interpret, and contribute data to long-term ecological studies. Activities and research efforts will vary depending on environmental conditions, wildlife activity, and permitting requirements.

Participants are encouraged to take an active role in the experience—helping spot whales, recording observations, contributing photographs to identification catalogs, and supporting ongoing research efforts alongside the expedition team.

With more than 500 potential landing sites along the Antarctic Peninsula, daily plans remain flexible. We do hope to visit on this trip historic sites south of the Antarctic circle as well as visit research stations subject to permission from the relevant authorities.

The Captain and Expedition Leader will adapt the route based on whale sightings, weather, and ice conditions to maximize wildlife encounters, research opportunities, and - conditions permitting -even a crossing of the Antarctic Circle.



tic Circle.

ITINERARY

Day 1: Ushuaia, Argentina

Board the expedition vessel in the afternoon, where you'll meet your crew and fellow travellers. After settling into your cabin, the ship sets off along the picturesque Beagle Channel. Relish your first evening at sea as the southernmost tip of South America disappears from view.

Wild Earth Travel

Small Ships, Big Adventures

0800 945 3327 (within New Zealand) | +64 (0) 3 365 1355 | 1800 107 715 (within Australia)

info@wildearth-travel.com | wildearth-travel.com

Wild Earth Travel

Small Ships, Big Adventures

wildearth-travel.com

info@wildearth-travel.com

Days 2 - 3: Crossing the Drake Passage

Start your Antarctic adventure with a crossing of the Drake Passage, a vast stretch of open ocean that marks the Antarctic Convergence, where nutrient-rich waters sustain a vibrant ecosystem.

While at sea, attend expert-led talks on Antarctica's history, wildlife, and geology. Head to the open decks or the bridge to spot albatrosses, petrels, and even whales. Adventure activities, including navigation workshops and safety briefings for kayaking and snowshoeing, will also be held.

By the end of Day 3, the first sighting of icebergs and snow-capped peaks will signal your arrival at the South Shetland Islands.

Days 4 - 7: Whale Research Operations - Antarctic Peninsula

Core science days in areas around and along the Gerlache Strait. Potential activities include (dependent on conditions & permitting):

****Zodiac-Based Whale Observation****

Conduct whale observation and behavioral logging from Zodiac vessels in active feeding and transit areas.

****Deployment and recovery of research equipment****

Deploy and recover underwater acoustic instruments used to record and analyze marine mammal presence and communication.

****Fluke Photo-ID sessions****

Participate in fluke photo-identification sessions to help track individual whales across sightings.

****Data Review & Processing****

Engage in evening sessions reviewing collected data, processing video, and discussing preliminary findings onboard.

These days are based around collecting data through our field operations and ecosystem-focused exploration. Shore landings may complement at-sea research, connecting whale behavior to broader Antarctic food web dynamics.

Days 8 - 10: Extended Science & Ecosystem Integration

Extended flexibility to revisit productive areas and continue ecosystem-focused exploration.

These additional days allow flexibility to revisit productive whale areas or shift focus based on conditions and research progress.

Other included and optional activities during your time in Antarctica include kayaking, hiking, and taking a dip into the icy cold Antarctic Sea.

****Adaptive Research Planning****

Adjust routes and operations dynamically to maximize opportunities for meaningful observations and data collection.

****Revisiting Whale Hotspots****

Return to previously active marine areas to continue tracking whale presence and behavior patterns.

****Kayaking****

Explore calm waters at close range, offering a unique perspective of the Antarctic environment.

****Hiking & Shore Exploration****

Step ashore for guided hikes across glacial landscapes and panoramic viewpoints.

****Polar Plunge****

Take an optional dip into the icy Antarctic waters for a memorable expedition experience.

Day 11: Farewell Landings

As the expedition heads back north, there's an opportunity for a final landing or zodiac cruise. Weather and ice conditions permitting, explore destinations like Brown Bluff, where towering cliffs and an Adelie penguin colony await, or Paulet Island, home to historic sites and abundant wildlife.

Day 12: Crossing the Drake Passage

Relive the journey north -- final lectures, seabird spotting, and a celebratory dinner.

Wild Earth Travel

Small Ships, Big Adventures

0800 945 3327 (within New Zealand) | +64 (0) 3 365 1355 | 1800 107 715 (within Australia)

info@wildearth-travel.com | wildearth-travel.com



Wild Earth Travel

Small Ships, Big Adventures



wildearth-travel.com

info@wildearth-travel.com

Day 13: Return to Ushuaia

Arrive back in Ushuaia in the early morning. After breakfast, disembark with cherished memories of an epic Antarctic expedition and new stories to tell.

Please note:

The above itinerary is a general guideline. Our precise route and activities will be adjusted to optimize wildlife viewing and adapt to prevailing weather and ice conditions. The Captain and/or Expedition Leader will make necessary changes to ensure the best possible experience. A daily program will be provided onboard. Flexibility is essential for a successful expedition. Whilst our focus is on early exploration landing sites cannot be guaranteed.



Wild Earth Travel

Small Ships, Big Adventures

0800 945 3327 (within New Zealand) | +64 (0) 3 365 1355 | **1800 107 715** (within Australia)

info@wildearth-travel.com | wildearth-travel.com

Wild Earth Travel

Small Ships, Big Adventures



wildearth-travel.com

info@wildearth-travel.com

YOUR SHIP: ST. HELENA

YOUR SHIP:	St. Helena
	Polar Code Category C Passenger Vessel
VESSEL TYPE:	Vessel
LENGTH:	105 metres / 344 ft
PASSENGER CAPACITY:	98
BUILT/REFURBISHED:	1989 / 2022

Combining adventure, education, and strong value, St Helena delivers an immersive polar experience with a focus on exploration and meaningful discovery.



discovery.

St Helena is a character-rich expedition vessel with a unique maritime legacy, originally built to serve one of the world's most remote communities and extensively refurbished in 2022. Now part of the Terra Nova Expeditions fleet, she combines heritage with modern comfort, accommodating just 98 guests for an intimate onboard experience supported by 81 crew members. Spacious, ocean-view cabins all feature ensuite bathrooms, with a variety of configurations including singles, twins, and shared options ideal for solo travellers, families, or groups. With inviting social spaces, panoramic observation lounges, and a relaxed atmosphere, the ship offers a welcoming environment designed for both comfort and connection.

Built for true expedition travel, St Helena is equipped with an ice-strengthened hull, powerful engines, and 12 Zodiacs, making her well suited for navigating the remote regions of Antarctica and beyond. Guests can take part in expert-led excursions such as zodiac cruises, guided landings, kayaking, and even camping, while onboard facilities include open decks for wildlife viewing, a gym, spa, two Jacuzzis, and a fully equipped science lab supporting active research programmes.

Wild Earth Travel

Small Ships, Big Adventures

0800 945 3327 (within New Zealand) | +64 (0) 3 365 1355 | 1800 107 715 (within Australia)

info@wildearth-travel.com | wildearth-travel.com

Wild Earth Travel

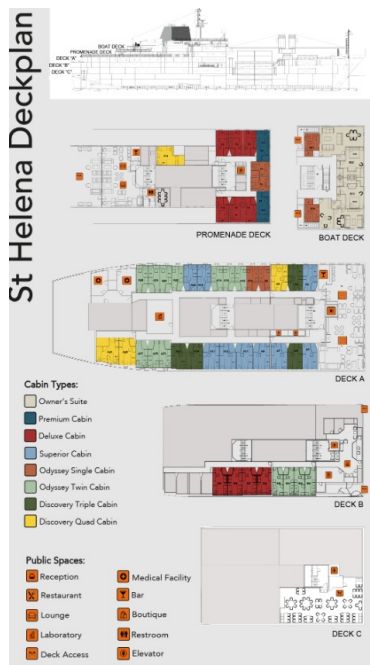
Small Ships, Big Adventures



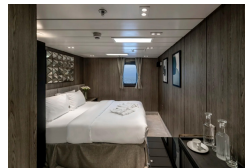
wildearth-travel.com

info@wildearth-travel.com

INSIDE YOUR SHIP



Deluxe Cabin



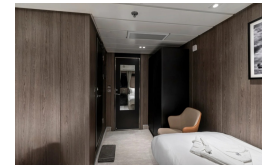
Discovery Quad Cabin



Discovery Triple Cabin



Odyssey Single Cabin



Odyssey Twin Cabin



Owner's Suite



Wild Earth Travel
Small Ships, Big Adventures

0800 945 3327 (within New Zealand) | +64 (0) 3 365 1355 | 1800 107 715 (within Australia)

info@wildearth-travel.com | wildearth-travel.com



Wild Earth Travel

Small Ships, Big Adventures



wildearth-travel.com

info@wildearth-travel.com

PRICING

07-Mar-2027 to 19-Mar-2027

Discovery Quad Cabin	10980 USD pp
Discovery Triple Cabin	11910 USD pp
Odyssey Single Cabin	13140 USD pp
Odyssey Twin Cabin	13140 USD pp
Superior Cabin	14250 USD pp
Deluxe Cabin	15990 USD pp
Premium Cabin	17470 USD pp
Owner's Suite	19120 USD pp



Wild Earth Travel
Small Ships, Big Adventures

0800 945 3327 (within New Zealand) | +64 (0) 3 365 1355 | 1800 107 715 (within Australia)

info@wildearth-travel.com | wildearth-travel.com