



Wild Earth Travel

Small Ships, Big Adventures



wildearth-travel.com

info@wildearth-travel.com

THE EMPEROR PENGUINS OF WEDDELL SEA - 14 DAY LUXURY ANTARCTICA EXPEDITION CRUISE

Set off on an ultimate quest, the promise of unprecedented encounters in the heart of the mysterious Weddell Sea, the kingdom of ice and polar legends. Endless ice floe, majestic tabular icebergs and immaculate silence make up the landscapes of this pristine world. Emperor penguins live here, these guardians of Antarctica that we see only at the boundaries of these highest latitudes. Alongside them, Adelie penguins liven up the ice floe. During your journey aboard *_Le Commandant Charcot_*, a strikingly elegant ship capable of navigating the planet's most extreme environments, the echoes of the great expeditions still resonate, from Shackleton to the modern explorers, while the ice unveils all its many nuances. A unique experience that will plunge you into the heart of a universe unlike any other.

We are privileged guests in these extreme lands where we are at the mercy of weather and ice conditions. Our navigation will be determined by the type of ice we come across; as the fast ice must be preserved, we will take this factor into account from day to day in our itineraries. The sailing schedule and any landings, activities and wildlife encounters are subject to weather and ice conditions. These experiences are unique and vary with each departure. The Captain and the Expedition Leader will make every effort to ensure that your experience is as rich as possible, while respecting safety instructions and regulations imposed by the IAATO.



Wild Earth Travel

Small Ships, Big Adventures

0800 945 3327 (within New Zealand) | +64 (0) 3 365 1355 | 1800 107 715 (within Australia)

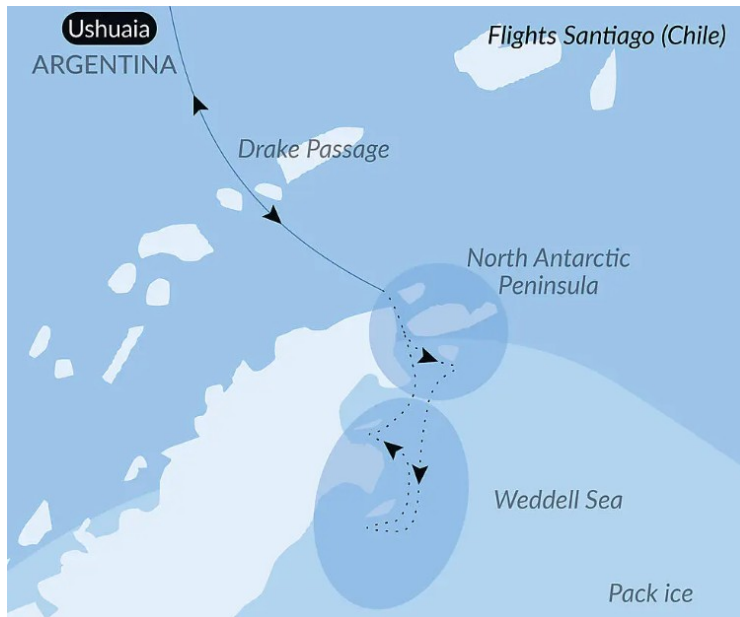
info@wildearth-travel.com | wildearth-travel.com

Wild Earth Travel

Small Ships, Big Adventures

wildearth-travel.com

info@wildearth-travel.com



Andes plunge straight into the sea, Ushuaia is one of the most fascinating places on earth, its very name evocative of journeys to the unlikely and the inaccessible...

Days 2 - 3 Crossing the Drake Passage

Use your days spent in the Drake Passage to familiarise yourself with your ship and deepen your knowledge of the Antarctic. The Expedition Leader will first present the IAATO rules of conduct that must be observed during landings in the region and will explain everything you need to know about the zodiac outings. Lectures about the history and wildlife of the Antarctic will be an opportunity for you to learn more about this magical region, where every cruise is a unique experience. You will experience exceptional sailing moments on board and join the naturalist-guides on your ship's exterior decks to look out for albatrosses, cape petrels, and other seabirds flying over the Drake Passage.

Days 4 - 5 Antarctic Peninsula

Succumb to the magic of a place unlike any other. To this day, the mythical Antarctic Peninsula still holds real fascination and promises its visitors unforgettable moments. Throughout your adventure in this icy realm, you will find yourself in the heart of a spectacular decor in subtle shades of blue and white, surrounded by exceptional wildlife. Penguins, humpback whales, seals and giant petrels are at home here, as are elephant seals, fur seals, Antarctic minke whales, and orcas. Depending on which sites you will be lucky enough to visit, you may get the chance to observe them and share with them the beauty of these extreme parts.

Each day, based on ice conditions, the Captain and the Expedition Leader will suggest zodiac outings or landings to discover the infinite riches of the Antarctic Peninsula. Glaciers, ice floe, tabletop icebergs, mountain peaks that plunge straight into the sea, volcanic beaches, research stations, enchanting bays, and vestiges of the whaling industry: these are the faces of the Antarctic that will likely reveal themselves to you, in a hushed and surreal atmosphere. You will sail in the wake of Jean-Baptiste Charcot, Adrien de Gerlache and Sir Ernest Shackleton, great Antarctic explorers who, from the 19th century, set out to conquer these remote and uninhabited lands.

Days 6 - 7 The Weddell Sea exploration

ITINERARY

Day 0 Pre Cruise

Transfer from airport to PONANT selected hotel.

Meet and greet at the hotel by our local representative.

Lunch on your own and time at leisure in the afternoon.

Dinner and overnight at the hotel.

Day 1 Ushuaia

Capital of Argentina's Tierra del Fuego province, Ushuaia is considered the gateway to the White Continent and the South Pole. Nicknamed "El fin del mundo" by the Argentinian people, this city at the end of the world nestles in the shelter of mountains surrounded by fertile plains that the wildlife seem to have chosen as the ultimate sanctuary. With its exceptional site, where the

Wild Earth Travel

Small Ships, Big Adventures

0800 945 3327 (within New Zealand) | +64 (0) 3 365 1355 | 1800 107 715 (within Australia)

info@wildearth-travel.com | wildearth-travel.com



Wild Earth Travel

Small Ships, Big Adventures

wildearth-travel.com

info@wildearth-travel.com

Impassable, extreme and captivating: this is the best way to describe the Weddell Sea, much of which is covered by a layer of thick, densely packed ice. It is a challenge and a privilege to sail upon this sea. Polar exploration finds its full meaning here. Heading towards the South is a real quest, with the promise of highly-charged encounters with the continent's endemic fauna. This is the kingdom of the emperor penguin, the largest penguin in the world, renowned for its elegance. Unlike other penguins that live on the rocks, the emperor nests on the ice floe which it needs for its reproductive cycle. It is therefore on the ice floe that you will be able to observe it walking around with its characteristic gait. In this southern sea, where the ice changes and is transformed constantly, there is never any monotony. The new reliefs and new colours ensure never-ending wonderment. You will sail into the heart of the immaculate ice floe, which is dislocated or densely packed, into an alley of icebergs. Among them are immense blocks of ice, tabular icebergs, that drift and illuminate the ocean with their cerulean blue haloes. Aboard, on shore, on the ice, you will be as close as possible to the colonies of Adelie penguins, Weddell seals, Mink whales, orcas, snow petrels.... With a little luck, you will get a glimpse of a rare Ross seal with its silver pelage or of emperor penguins, waddling along the edge of the ice floe. A sight that is as fascinating as it is emotional.

Day 8 North Antarctic Peninsula

Throughout your time in the north of the Antarctic Peninsula, you will find yourself in the heart of a spectacular decor in subtle shades of blue and white, surrounded by exceptional wildlife. You will sail through the Antarctic Sound, named after Swedish explorer Otto Nordenskjöld's ship, which was trapped by the ice during an important scientific expedition in 1902. The gateway to the Weddell Sea, this sound is filled with gigantic tabular icebergs and plates of sea ice drifting northward from the coastal areas of this vast sea. It is home to Adelie penguins and a great many leopard seals.

Days 9 - 10 The Weddell Sea exploration

Impassable, extreme and captivating: this is the best way to describe the Weddell Sea, much of which is covered by a layer of thick, densely packed ice. It is a challenge and a privilege to sail upon this sea. Polar exploration finds its full meaning here. Heading towards the South is a real quest, with the promise of highly-charged encounters with the continent's endemic fauna. This is the kingdom of the emperor penguin, the largest penguin in the world, renowned

for its elegance. Unlike other penguins that live on the rocks, the emperor nests on the ice floe which it needs for its reproductive cycle. It is therefore on the ice floe that you will be able to observe it walking around with its characteristic gait. In this southern sea, where the ice changes and is transformed constantly, there is never any monotony. The new reliefs and new colours ensure never-ending wonderment. You will sail into the heart of the immaculate ice floe, which is dislocated or densely packed, into an alley of icebergs. Among them are immense blocks of ice, tabular icebergs, that drift and illuminate the ocean with their cerulean blue haloes. Aboard, on shore, on the ice, you will be as close as possible to the colonies of Adelie penguins, Weddell seals, Mink whales, orcas, snow petrels.... With a little luck, you will get a glimpse of a rare Ross seal with its silver pelage or of emperor penguins, waddling along the edge of the ice floe. A sight that is as fascinating as it is emotional.

Days 11 - 12 Crossing the Drake Passage

If there is one place, one sea, one waterway dreaded by tourists, researchers and hardened seafarers alike, it is undoubtedly Drake Passage. Situated at the latitude of the infamous Furious Fifties winds, between Cape Horn and the South Shetland Islands, it is the shortest route to connect Antarctica to South America. Seasoned navigators will tell you that you must earn your visit to the White Continent! As the Antarctic convergence zone where cold currents rising up from the South Pole meet warmer equatorial water masses, Drake Passage harbours a very diverse marine fauna. Don't forget to look to the sky to catch a glimpse of elegant albatross and Cape petrels, playfully floating about in the wind around your ship.

Day 13 Ushuaia

Capital of Argentina's Tierra del Fuego province, Ushuaia is considered the gateway to the White Continent and the South Pole. Nicknamed "El fin del mundo" by the Argentinian people, this city at the end of the world nestles in the shelter of mountains surrounded by fertile plains that the wildlife seem to have chosen as the ultimate sanctuary. With its exceptional site, where the Andes plunge straight into the sea, Ushuaia is one of the most fascinating places on earth, its very name evocative of journeys to the unlikely and the inaccessible...

Please note:



Wild Earth Travel

Small Ships, Big Adventures

0800 945 3327 (within New Zealand) | +64 (0) 3 365 1355 | 1800 107 715 (within Australia)

info@wildearth-travel.com | wildearth-travel.com



Wild Earth Travel

Small Ships, Big Adventures



wildearth-travel.com

info@wildearth-travel.com

We are privileged guests in these extreme lands where we are at the mercy of weather and ice conditions. Our navigation will be determined by the type of ice we come across; as the fast ice must be preserved, we will take this factor into account from day to day in our itineraries. The sailing schedule and any landings, activities and wildlife encounters are subject to weather and ice conditions. These experiences are unique and vary with each departure. The Captain and the Expedition Leader will make every effort to ensure that your experience is as rich as possible, while respecting safety instructions and regulations imposed by the IAATO.

Wild Earth Travel

Small Ships, Big Adventures

0800 945 3327 (within New Zealand) | +64 (0) 3 365 1355 | **1800 107 715** (within Australia)

info@wildearth-travel.com | **wildearth-travel.com**

Wild Earth Travel

Small Ships, Big Adventures



wildearth-travel.com

info@wildearth-travel.com

YOUR SHIP: LE COMMANDANT-CHARCOT

YOUR SHIP:	Le Commandant-Charcot
VESSEL TYPE:	Polar Luxury Expedition
LENGTH:	149.9 meters
PASSENGER CAPACITY:	135 cabins
BUILT/REFURBISHED:	2018/2019

Le Commandant Charcot is a purpose-built polar exploration vessel engineered for extreme environments, operating with a hybrid electric-LNG system that reduces noise, vibration and emissions while pushing deeper into ice than conventional ships. Interior spaces follow a restrained, insulated design philosophy that supports comfort in high-latitude conditions: multiple lounges, refined dining rooms, theatre, boutique and extensive wellness areas arranged to maintain warmth, calm and controlled movement throughout the ship. Accommodation spans 123 staterooms and suites, all with balconies, with upper-tier suites extending up to 115 m².

The vessel integrates dedicated scientific infrastructure into its core layout, including laboratories and working spaces that support ongoing polar research. Field operations and environmental systems are engineered from the ground up for low-impact navigation, aligning with the ship's mandate to access remote polar areas responsibly. A full virtual deck plan and live bow-mounted webcam reinforce the ship's emphasis on landscape immersion and transparency of experience.

Read About Our Experience on Board Le Commandant Charcot

It's All About the Destination... And This Ship



d This Ship

Wild Earth Travel

Small Ships, Big Adventures

0800 945 3327 (within New Zealand) | +64 (0) 3 365 1355 | 1800 107 715 (within Australia)

info@wildearth-travel.com | wildearth-travel.com

Wild Earth Travel

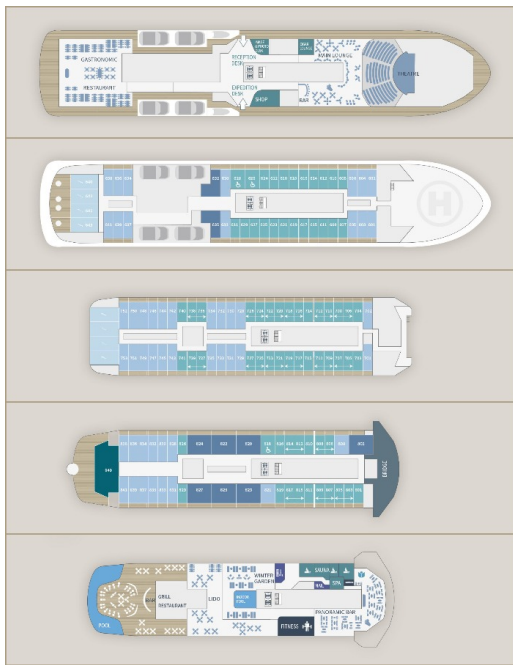
Small Ships, Big Adventures



wildearth-travel.com

info@wildearth-travel.com

INSIDE YOUR SHIP



Deluxe Suite Deck 6



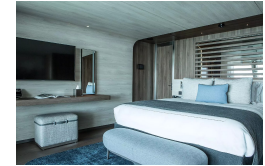
Deluxe Suite Deck 7



Deluxe Suite Deck 8



Duplex Suite



Grand Prestige Suite



Owner's Suite



Prestige Stateroom Deck 6



Prestige Stateroom Deck 7



Wild Earth Travel

Small Ships, Big Adventures

wildearth-travel.com

info@wildearth-travel.com

PRICING

26-Oct-2027 to 08-Nov-2027

Prestige Stateroom Deck 6	41250 AUD pp
Prestige Stateroom Deck 7	41980 AUD pp
Prestige Stateroom Deck 8	42720 AUD pp
Deluxe Suite Deck 6	43810 AUD pp
Deluxe Suite Deck 7	45670 AUD pp
Deluxe Suite Deck 8	47140 AUD pp
Prestige Suite Deck 7	59650 AUD pp
Prestige Suite Deck 8	61490 AUD pp
Grand Prestige Suite	63320 AUD pp
Privilege Suite Deck 8	67000 AUD pp
Duplex Suite	90910 AUD pp
Owner's Suite	125500 AUD pp

07-Nov-2027 to 20-Nov-2027

Prestige Stateroom Deck 6	41250 AUD pp
Prestige Stateroom Deck 7	41980 AUD pp
Prestige Stateroom Deck 8	42720 AUD pp
Deluxe Suite Deck 6	43810 AUD pp
Deluxe Suite Deck 7	45670 AUD pp
Deluxe Suite Deck 8	47140 AUD pp
Prestige Suite Deck 7	59650 AUD pp
Prestige Suite Deck 8	61490 AUD pp
Grand Prestige Suite	63320 AUD pp
Privilege Suite Deck 8	67000 AUD pp
Duplex Suite	90910 AUD pp
Owner's Suite	125500 AUD pp

19-Nov-2027 to 02-Dec-2027

Prestige Stateroom Deck 6	41250 AUD pp
Prestige Stateroom Deck 7	41980 AUD pp
Prestige Stateroom Deck 8	42720 AUD pp
Deluxe Suite Deck 6	43810 AUD pp
Deluxe Suite Deck 7	45670 AUD pp
Deluxe Suite Deck 8	47140 AUD pp
Prestige Suite Deck 7	59650 AUD pp
Prestige Suite Deck 8	61490 AUD pp
Grand Prestige Suite	63320 AUD pp
Privilege Suite Deck 8	67000 AUD pp
Duplex Suite	90910 AUD pp
Owner's Suite	125500 AUD pp

Wild Earth Travel

Small Ships, Big Adventures

0800 945 3327 (within New Zealand) | +64 (0) 3 365 1355 | 1800 107 715 (within Australia)

info@wildearth-travel.com | wildearth-travel.com



Wild Earth Travel

Small Ships, Big Adventures



wildearth-travel.com

info@wildearth-travel.com

PRICING

15-Dec-2027 to 28-Dec-2027

Prestige Stateroom Deck 6	37020 AUD pp
Prestige Stateroom Deck 7	37660 AUD pp
Prestige Stateroom Deck 8	38310 AUD pp
Deluxe Suite Deck 6	39280 AUD pp
Deluxe Suite Deck 7	40920 AUD pp
Deluxe Suite Deck 8	42210 AUD pp
Prestige Suite Deck 7	53250 AUD pp
Prestige Suite Deck 8	54870 AUD pp
Grand Prestige Suite	56490 AUD pp
Privilege Suite Deck 8	59740 AUD pp
Duplex Suite	80840 AUD pp
Owner's Suite	125500 AUD pp



Wild Earth Travel

Small Ships, Big Adventures

0800 945 3327 (within New Zealand) | +64 (0) 3 365 1355 | **1800 107 715** (within Australia)

info@wildearth-travel.com | wildearth-travel.com



Wild Earth Travel

Small Ships, Big Adventures



wildearth-travel.com

info@wildearth-travel.com

SPECIAL OFFERS

Online prices reflect the current brochure fare savings of up to 30%. Prices may change based on demand. Terms and conditions apply. This special offer is subject to availability. Please contact us for more details.



Wild Earth Travel

Small Ships, Big Adventures

0800 945 3327 (within New Zealand) | +64 (0) 3 365 1355 | 1800 107 715 (within Australia)

info@wildearth-travel.com | wildearth-travel.com