

Wild Earth Travel

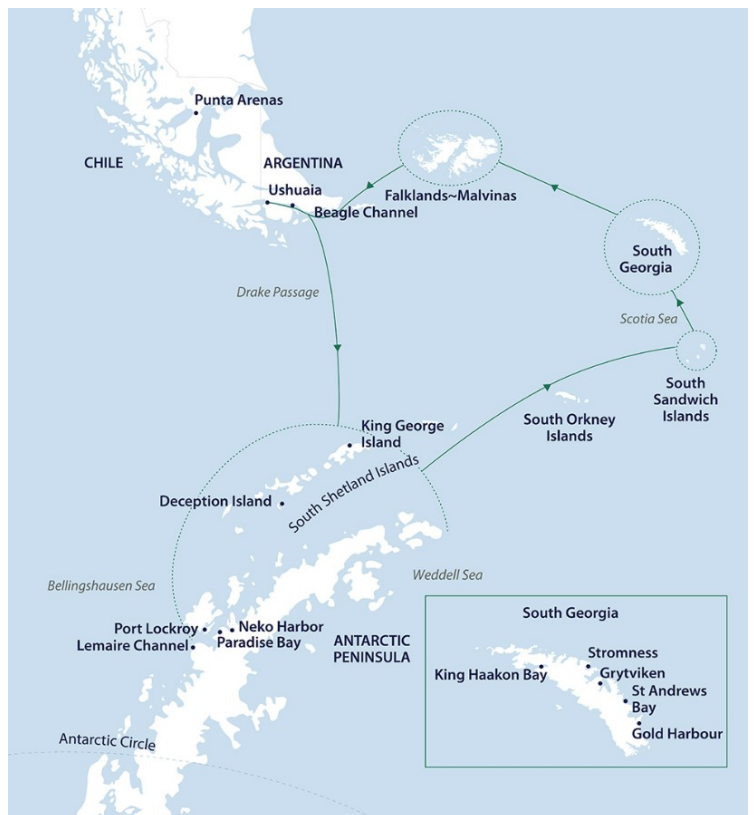
Small Ships, Big Adventures

wildearth-travel.com

info@wildearth-travel.com

SOUTH GEORGIA & ANTARCTIC ODYSSEY FEATURING THE SOUTH SANDWICH ISLANDS

On this epic voyage, not only will you explore the famed white continent, discover the Falklands~Malvinas, encounter the wildlife haven in South Georgia, you will also sail to the South Sandwich Islands, a chain of seldom-visited volcanic islands located 740 km (460 miles) south-east of South Georgia. Simply reaching these wild, far-flung islands is an adventure.



ITINERARY

Day 1 Arrive Ushuaia

Arrive in Ushuaia, where you will be met by a representative of Aurora Expeditions and transferred with your fellow expeditioners to your assigned pre-voyage hotel. If you are already in Ushuaia, we ask you to make your way to your hotel. Check-in is from 3.00 pm. This afternoon, visit the Aurora

Wild Earth Travel

Small Ships, Big Adventures

0800 945 3327 (within New Zealand) | +64 (0) 3 365 1355 | 1800 107 715 (within Australia)

info@wildearth-travel.com | wildearth-travel.com

Wild Earth Travel

Small Ships, Big Adventures

wildearth-travel.com

info@wildearth-travel.com

Expeditions hospitality desk in the hotel lobby, between 3.00 pm and 7.00 pm, to collect your luggage tags, and confirm if you wish to join our Beagle Channel and Isla de Los Lobos Cruise (sea lion island) tomorrow. Our team will confirm details regarding your embarkation day, answer any questions and provide you with information on where to dine or purchase last minute items.

Expeditioners arriving after 7.00 pm will find a welcome pack waiting for them at check-in. We ask you to visit our hospitality desk tomorrow between 8.00 am - 10.00 am.

The remainder of your time is at leisure. All meals today are at your own expense.

Assigned accommodation: To be confirmed

Day 2 Embarkation

This morning, enjoy breakfast and check-out. Please ensure your cabin luggage is fitted with cabin tags clearly labelled with your name and cabin number. By 11.00 am take your cabin luggage to hotel reception, prior to, or at check-out. Your luggage will be stored and transferred directly to the port for clearance, to be placed in your cabin ahead of your arrival on board. Please keep any valuables or personal items with you throughout the day.

Your morning is at leisure to explore Ushuaia.

Those wishing to join our afternoon catamaran cruise, meet back at the hotel lobby at 12.15 pm ready to transfer to the port at 12.30 pm. Here we board our catamaran and sail the Beagle Channel, towards the city's iconic Les Eclaireurs Lighthouse. Crossing the Bridges Archipelago we'll slow down to watch colonies of sea lions and imperial cormorants sun themselves on the rocky outcrops, while gulls, rock cormorants, skuas, petrels, albatrosses and cauquenes are often sighted. Our cruise offers panoramic views of the city and the surrounding mountain range, in addition to hearing tales of the people and communities of the region.

Alternatively, enjoy your day at leisure and meet at your hotel lobby at 3.00 pm, or 3.30 pm from the meeting point at the parking lot near the pier (details will be given by our ground staff at the hotel), to be transferred to the pier for embarkation.

Once onboard, you'll have time to settle into your cabin before our important mandatory briefings. As the ship pulls away from port, we'll gather on the deck to commence our adventure with spectacular views over Ushuaia and Tierra del Fuego.

This evening get to know your fellow expeditioners and friendly expedition team and crew at a welcome dinner to celebrate the start of a thrilling adventure to Antarctica.

Days 3-4 Drake Passage Crossing

As we commence the Drake Passage crossing, we make the most of our time getting comfortable with the motions of the sea. Our expedition team prepare you for our first landing with important wildlife guidelines and biosecurity procedures and start our lecture program to help you learn more about Antarctica's history, wildlife and environment.

Our wildlife experiences begin as we enjoy watching and photographing the many seabirds, including majestic albatrosses and giant petrels following our vessel. On sea days, you can enjoy the facilities on board the vessel including the gym, sauna and jacuzzis or relax in one of the observation lounges.

Nearing the South Shetland Islands and the tip of the Antarctic Peninsula on the afternoon of day four, the excitement is palpable with everyone converging on one of the observation decks watching for our first iceberg. The ocean takes on a whole new perspective once we are below the Antarctic Convergence and are surrounded by the surreal presence of floating ice sculptures. The memory of your first big iceberg sighting is likely to remain with you for a lifetime. Time and weather permitting, we may attempt our first landing in Antarctica by late afternoon.

Days 5-8 Antarctic Peninsula

It's almost impossible to describe the feeling of arriving in Antarctica. Spotting your first iceberg and taking a deep breath of some of the most fresh, crisp air on earth is an experience that will stay with you forever.

Wild Earth Travel

Small Ships, Big Adventures

0800 945 3327 (within New Zealand) | +64 (0) 3 365 1355 | 1800 107 715 (within Australia)

info@wildearth-travel.com | wildearth-travel.com



Wild Earth Travel

Small Ships, Big Adventures



wildearth-travel.com

info@wildearth-travel.com

Once we arrive, the western side of the Antarctic Peninsula and the South Shetland Islands are ours to explore, and we have a host of choices available to us. Your experienced expedition team, who have made countless journeys to this area, will use their expertise to design your voyage from day to day, choosing the best options based on the prevailing weather, ice conditions and wildlife opportunities.

We generally make landings or Zodiac excursions twice a day. You will want to rug up before joining Zodiac cruises along spectacular ice cliffs or among grounded icebergs, keeping watch for whales, seals and porpoising penguins. Zodiacs will also transport you from the ship to land, where you can visit penguin rookeries, discover historic huts and explore some of our favourite spots along the peninsula.

While ashore we aim to stretch our legs, wandering along pebbly beaches or perhaps up snow-covered ridgelines to vantage points with mountains towering overhead and ice-speckled oceans below. If you have chosen an optional activity, you will have the option to do that whenever conditions allow, and of course keen polar plungers will have the chance to fully immerse themselves in polar waters - conditions permitting!

In addition to Zodiac cruises and shore excursions, we may ship cruise some of the narrow, dramatic straits separating offshore islands from the mainland, or linger in scenic bays to marvel at sculptural icebergs and photograph spectacular scenery. This is a great time to enjoy the observation lounge or make your way to the bridge (open at the Captain's discretion) for uninterrupted views of Antarctica in all its splendour. Keep an ear out for the creak and deep rumble of glaciers as they carve into the sea. Take a quiet moment to experience the wonder of this incredible white continent.

Days 9-11 At Sea

As we sail towards the South Sandwich Islands, enjoy informative and entertaining lectures from our expedition team and learn about the wildlife, history and culture of the places that you will visit on the voyage. You may want to use the sauna and jacuzzis, stay active in the gym or borrow a book from our well-stocked library and relax in one of the many observation areas on board the vessel.

Days 12-13 South Sandwich Islands

On Captain James Cook's second voyage of discovery (1772-1775), he circumnavigated the globe in high southern latitudes, without seeing land, casting doubt on the existence of the Antarctic continent, which at that time was still unknown. It was during this voyage Cook discovered the South Sandwich Islands and landed on South Georgia Island, describing them as, 'Lands doomed by Nature to perpetual frigidness: never to feel the warmth of the sun's rays; whose horrible and savage aspects I have not words to describe.'

He named the South Sandwich Islands for Lord Sandwich, they are considered together with South Georgia, as a UK Dependent Territory (see above), and are uninhabited. Although Cook sighted a number of the islands, several more were not discovered until Bellingshausen visited in 1819.

Located about 740 km (460 mi) southeast of South Georgia, the islands form a chain some 350 km (220 mi) long, comprising 11 large and several smaller islands with a total area of about 600 sq. km (230 sq. mi). Most are ice-capped, and the tallest peak, on Montagu Island, reaches 1,370 m (4,500 ft). The climate is cold, with frequent snow and strong winds.

The islands are volcanic in origin and some remain active. The island of Zavodovski, for instance, appears in constant eruption and reeks of rotten eggs (the volcano itself is named Mt. Asphyxia), while the islands of Visokoi, Candlemas, Saunders, and Bellingshausen all show definite signs of activity. Bristol, Cook, and Thule islands are heavily glaciated and show no signs of warmth or activity. All the islands are steep sided above the water and fall away rapidly into deep water - more than 1,500 m (5,000 ft).

In this wild environment, nature determines what we are able to do and see. If conditions allow, we hope to explore the dramatic coastline of some the islands on board the ship or by Zodiac. Little is known about these islands, although the British Antarctic Survey has undertaken some limited biological and geological work there, mainly in the 1960s. Vegetation is very sparse. But there's at least one extraordinary wildlife spectacle: Zavodovski Island supports a chinstrap penguin colony that numbers around one million penguins on its steep volcanic slopes. Those who have seen this massive penguin colony speak of it with awe.

Day 14 At sea

Wild Earth Travel

Small Ships, Big Adventures

0800 945 3327 (within New Zealand) | +64 (0) 3 365 1355 | 1800 107 715 (within Australia)

info@wildearth-travel.com | wildearth-travel.com



Wild Earth Travel

Small Ships, Big Adventures



wildearth-travel.com

info@wildearth-travel.com

Reflect over a few drinks on the adventures of your time spent in the South Sandwich Islands and hear tales of exploration and discovery from our team of onboard experts as we prepare for our exciting days ahead in South Georgia.

Days 15-18 South Georgia

Your experienced expedition team will use their local knowledge to plan your voyage from day to day, choosing the best options based on the prevailing weather, sea state and wildlife opportunities.

Remember to layer up before joining Zodiac excursions that may zip into craggy coves and along the rocky coastline in search of nesting penguins, seal haul-outs and bird cliffs. Remember to keep an eye out for South Georgia's kelp forests as well - these remarkable underwater ecosystems are quite mesmerising as their fronds sway back and forth on the water's surface.

Our Zodiacs will also transport ashore, where you can visit some of the largest king penguin colonies on Earth, take a guided walk among fur seals and elephant seals (making sure you listen to your guides and keep your distance!) and wander along pebbled streams and grassy glacial outwash plains. We also hope to visit the remnants of South Georgia's thriving whaling stations and pay our respects to Sir Ernest Shackleton, whose incredible voyage of survival is synonymous with this island. If you have chosen an optional activity, you will have the option to do that whenever conditions allow.

In addition to Zodiac excursions and shore excursions, we may ship cruise through fjords with towering cliffs of ancient stone, or into deeply indented bays towards dramatic glacier fronts. This is a great time to find a comfy spot in the observation lounge or make your way to the bridge (open at the Captain's discretion) to enjoy uninterrupted views of South Georgia's majestic coast.

Days 19-20 At Sea

As we sail towards the Falklands~Malvinas, there is plenty to keep you occupied on board.

Our expedition team will continue to share their wealth of knowledge about the wildlife, history and natural world as part of the onboard lecture series. You will have ample time to enjoy observing seabirds from the stern of the ship, keeping a close watch for whales and other marine wildlife, or simply enjoying the many facilities available to you on the ship.

Day 21 At Sea / Falklands~Malvinas

Sea and weather conditions will determine our arrival time into the Falklands~Malvinas today.

The Falklands~Malvinas comprises two large islands (East and West Falkland), with over 700 islands scattered off the coast. All but seven of these are uninhabited, with windswept coastlines, white sand beaches and crystal-clear water. These beautifully barren islands are true wildlife havens, sheltering an impressive diversity of birdlife, including the largest black-browed albatross colony on earth. The cold, nutrient-rich waters surrounding the islands make this a prime location for spotting marine life.

Day 22 Falklands~Malvinas

There are many beautiful areas to explore across the Falklands~Malvinas, each offering a unique perspective on this magnificent archipelago. Your experienced expedition team, who have made countless journeys to this area, will use their expertise to design your voyage from day to day, choosing the best options based on the prevailing winds, weather and wildlife opportunities.

We generally make landings or Zodiac excursions twice a day. Even though we are north of the Antarctic Convergence it can be quite chilly here, so you will want to layer up before joining Zodiac cruises into rocky coves or along sea cliffs, keeping watch for seals, sea lions, dolphins and penguins. Zodiacs will also shuttle you from the ship to shore, where you may be able to visit albatross colonies, penguin rookeries and perhaps even have a traditional English 'tea and scones' at a local cottage.



Wild Earth Travel

Small Ships, Big Adventures

0800 945 3327 (within New Zealand) | +64 (0) 3 365 1355 | 1800 107 715 (within Australia)

info@wildearth-travel.com | wildearth-travel.com

Wild Earth Travel

Small Ships, Big Adventures



wildearth-travel.com

info@wildearth-travel.com

Conditions permitting, we hope to land in historic Stanley, the capital of the Falklands~Malvinas. This charming town has a distinctly British character, with terraced town houses, pioneer cottages and even an iconic red telephone box! Colourful buildings house cosy cafes, English pubs, souvenir shops, a post office and the fascinating Historic Dockyard Museum, with displays on the maritime history of the Falkland Islands, natural history and links to Antarctica.

Days 23 At Sea

As we sail towards Ushuaia, you may choose to spend your precious time editing photos, enjoying the onboard facilities, or attend final lectures. Celebrate the end of an unforgettable voyage with newfound friends at a special Captain's farewell dinner.

With lectures and film presentations to complete our Antarctic experience, there is still plenty of time to enjoy the magic of the Southern Ocean and the life that calls it home. There is time for reflection and discussion about what we have seen and experienced. We hope you become ambassadors for the Antarctic region, telling your family, friends and colleagues about your journey to this magical place, advocating for its conservation and preservation so that they might one day visit the region to experience what you have been lucky to see and do here.

Day 24 Disembark Ushuaia

During the early morning, we cruise up the Beagle Channel, before quietly slipping into dock in Ushuaia, where we will be free to disembark around 8.00 am. Farewell your expedition team and fellow passengers as we all continue our onward journeys, hopefully with a newfound sense of the immense power of nature.

Upon disembarkation, for those continuing their travels in the region, transportation to the hotel will be arranged exclusively for guests who have booked their accommodations through Aurora or for those staying in downtown areas near the port. Expeditioners departing on flights prior to 12:30 pm will be directly transferred to Ushuaia Airport, those with flights after 12:30 pm will

have the opportunity to explore Ushuaia before an afternoon airport transfer, and the transfer procedures and details will be communicated onboard before disembarkation.

Note: At the conclusion of the voyage, we do not recommend booking flights departing Ushuaia prior to 12.00 pm on the day of disembarkation in case there are delays.

Please note:

Itineraries are subject to change.

Wild Earth Travel

Small Ships, Big Adventures

0800 945 3327 (within New Zealand) | +64 (0) 3 365 1355 | 1800 107 715 (within Australia)

info@wildearth-travel.com | wildearth-travel.com



Wild Earth Travel

Small Ships, Big Adventures



wildearth-travel.com

info@wildearth-travel.com

YOUR SHIP: GREG MORTIMER

YOUR SHIP:	Greg Mortimer
VESSEL TYPE:	Expedition
LENGTH:	104 metres
PASSENGER CAPACITY:	132
BUILT/REFURBISHED:	2019

Capable of negotiating the strongest winds and waves, the Greg Mortimer is built to world-class polar standards - designed in close consultation with our expedition specialists, taking advantage of our more than 25 years of experience.

The Greg Mortimer redefines expedition cruising for the future, with just 132 passengers on board in the polar regions. Not only is the ship bigger to contend with adverse weather conditions, its added creature comforts make for a more enjoyable journey out on the open ocean. The Greg Mortimer remains true to our ethos and focus on multiple landings, flexible itineraries and family atmosphere - just with an improved home base!

As a modern and custom-designed ship, the Greg Mortimer is at the cutting edge of nautical technology. Robust, powerful and built with our guests in mind, this ship marks a significant investment in our fleet's capabilities. From the European Arctic to the depths of Antarctica, and other far-flung destinations in-between, the Greg Mortimer will make your journey a breeze!

Greg Mortimer ULSTEIN X-BOW™

Our expeditions face some of the worst Mother Nature can throw at us. However, this won't be a problem on the Greg Mortimer with the introduction of the patented X-BOW™, created by Norwegian

ship designer ULSTEIN. As one of the leaders in marine engineering, ULSTEIN's X-BOW™ is an inverted bow concept that's been built on over 100 vessels in the shipping industry. Excitingly, we are the first expedition cruise operator to utilise this technology for the challenging open ocean waves!

Hydraulic viewing platforms

Although there is no doubt that you'll love the aesthetics of the Greg Mortimer, we are all here to admire the spectacular landscape and spot the elusive wildlife in their natural habitat. To ensure you get the best views possible, the new ship features unique viewing platforms, custom-built for the Greg Mortimer. Accessed from Deck 5, the two platforms fold out hydraulically for unobstructed views of passing marine life and seabirds - make sure your camera is locked and loaded!

Zodiac launching platform

Zodiacs are a vital part of getting up close and personal on your adventure - sneaking into areas that the Greg Mortimer can't reach. On this new ship, there are specially designed launching platforms that enable us to load Zodiacs easily and quickly, allowing you to spend more time exploring on the two to three daily landings. There are 15 Zodiacs that are boarded from either side of Deck 3 (sea level), perfect for when there is a group of fluffy cute penguin chicks that we need a photo of!

Activity Platform

Regardless of your destination, we offer a number of additional activities to allow you to see more of the environment. From kayaking and diving to climbing and ski touring, it's these optional activities that often leave the biggest impression on your trip as a whole. Onboard the Greg Mortimer, there is a



Wild Earth Travel
Small Ships, Big Adventures

0800 945 3327 (within New Zealand) | +64 (0) 3 365 1355 | 1800 107 715 (within Australia)

info@wildearth-travel.com | wildearth-travel.com

Wild Earth Travel

Small Ships, Big Adventures



wildearth-travel.com

info@wildearth-travel.com

spacious prep and loading platform for these activities and more - designed in consultation with our expert activity guides.

Environmentally friendly

Climate change and carbon emissions continue to be major issues that everyone needs to be aware of and actively managing. This includes reduced emissions into the air and sea, lower energy consumption, high fuel efficiency, reduced light pollution for minimal wildlife disruption and lower on-board plastic use. It's vital to also mention the state-of-the-art virtual anchoring technology of the X-BOW™, which means the ship can float anchorless while launching Zodiacs, kayaks etc, without disturbing delicate sea floor areas.

Safety features

This starts with the return-to-port equipment - not compulsory on a ship of this size - which duplicates the propulsion system. This enables the ship to maintain operating systems and comfort in the event of engine failure. Furthermore, the Greg Mortimer is Polar Code 6 compliant, holds BV class and is fully compliant with the latest SOLAS requirements. It's also built with a Rolls Royce stabiliser system. If there's an incident or accident during your adventure, the ship has an on-board, fully-stocked medical centre - where our trained medical team can provide necessary treatment in a timely fashion. Safety continues to be an issue that our team takes very serious and the Greg Mortimer allows us to create an environment where you can concentrate on the brilliant landscape and wildlife, without worrying about your wellbeing.

Ship Life

Greg Mortimer is designed to serve your every need. It's your bedroom, bathroom, lounge, dining room and even your observatory. Make yourself at home, the Greg Mortimer is yours to enjoy!

Observation Points

Let's face it - you don't want windowless rooms when travelling around some of the most beautiful locations around the world. This is why the Greg Mortimer is designed with plenty of dedicated observation spaces - ideal for keen bird spotters, wildlife watchers and those wanting to watch the scenery go past. From the indoor 180-degree lounge and outdoor 360-degree open deck, both on deck 8, to the 270-degree open sundeck on level 7, there are plenty of observation points to share around the ship! If these are full, then you can take up a spot on one of the two hydraulic viewing platforms on deck 5. Aurora Expeditions also has an open bridge policy, which means at any point you can come up to the bridge and check out what the captain and officers are up to. From watching navigational practices to observing mapping techniques, you can get a firsthand look at the inner workings of the Greg Mortimer.

Shore excursions

Although the ship is fun, the real enjoyment comes from the many shore excursions that are available. Depending on the weather and itinerary, it's possible to take two to three landings daily, taking a look at everything from rock formations and ancient ruins to cute groups of penguins. We know time is of the essence in these wild locations, so the Greg Mortimer has been designed with 15 Zodiacs, which means you can maximise your time on shore. From four dedicated sea level launching platforms, transfers are quicker, safer and enable you to get closer to the action for a longer period of time. Just remember to charge your camera before you step onto the Zodiac!

Activity options

From kayaking and skiing to diving and climbing, these are one-in-a-lifetime opportunities that you need to take advantage

Wild Earth Travel

Small Ships, Big Adventures

0800 945 3327 (within New Zealand) | +64 (0) 3 365 1355 | 1800 107 715 (within Australia)

info@wildearth-travel.com | wildearth-travel.com

Wild Earth Travel

Small Ships, Big Adventures



wildearth-travel.com

info@wildearth-travel.com

of. Aboard the Greg Mortimer there is a specially designed launching platform for all activities, a concept overseen by our activity experts. This area also includes individual lockers in the expansive mudroom and rapid drying areas for wetsuits so you can quickly get warm after exploring in the elements!

Dining

From the moment you step onto the Greg Mortimer, we aim to give you the best hospitality service possible. Starting with the official Captain's welcome, as our guests, you're welcome to 24 hours complimentary coffee, tea and snack facilities in addition to the range of different menu options and courses for each meal. Meals are served in large dining room/restaurant with family style dining, perfect to swap stories with your new expedition family. Enjoy the range of house wine, beers and soft drinks included with dinner after a long day in the wild, preparing yourself for another exciting day to follow. On the last day of your trip, the team on the Greg Mortimer put on a special farewell four-course dinner and cocktails - a perfect way to reflect on your time on the ship and consolidate lifelong friendships with the people you've met on-board.

On-board entertainment

When you're relaxing during a sea day or you have a little downtime on the ship between excursions, what is there to do onboard the Greg Mortimer? Plenty! On all our expeditions, there are experts who lead presentations in the spacious lecture room so you can understand the region a little better. These often include topics as broad as history and culture to biology and climate change, these presentations aim to educate and entertain. If you're keen to just watch the surroundings and keep your eyes peeled for wildlife, you have access to two bars/lounges where the stunning floor to ceiling windows offer a special perspective on the landscape. The Greg Mortimer is also

decked out with other facilities for your enjoyment. There is a library on Deck 5 with books and maps and a Wellness Centre complete with gym equipment, sauna and spa. Feeling a little sore after walking around all day? Treat yourself to a massage at the Wellness Centre and feels the aches disappear! Keen photographers and artists will revel in the multimedia room on Deck 5.



on Deck 5.

Wild Earth Travel

Small Ships, Big Adventures

0800 945 3327 (within New Zealand) | +64 (0) 3 365 1355 | 1800 107 715 (within Australia)

info@wildearth-travel.com | wildearth-travel.com

Wild Earth Travel

Small Ships, Big Adventures

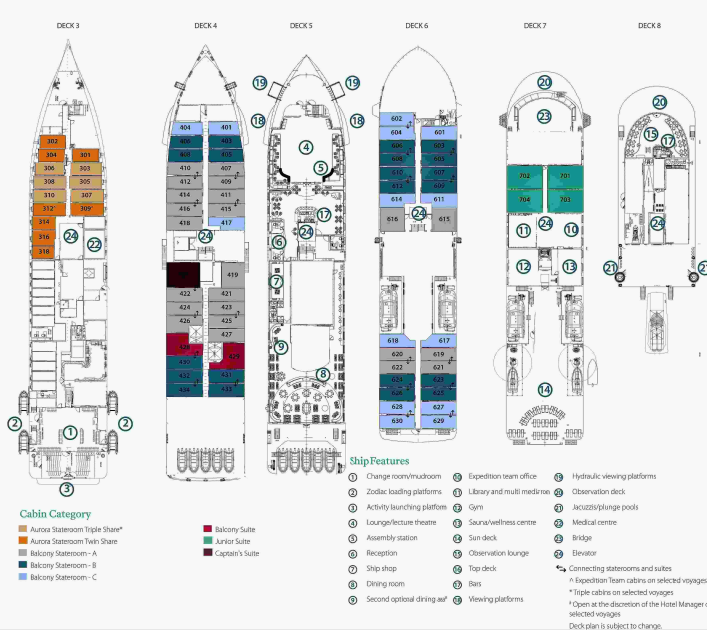


wildeath-travel.com

info@wildeath-travel.com

INSIDE YOUR SHIP

Deck plan - Greg Mortimer



Aurora Stateroom Triple



Aurora Stateroom Twin



Balcony Stateroom - A



Balcony Stateroom - B



Balcony Stateroom - C



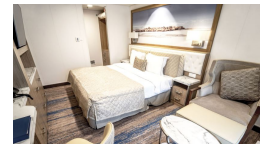
Balcony Stateroom Superior



Captain's Suite



Junior Suite





Wild Earth Travel

Small Ships, Big Adventures



wildearth-travel.com

info@wildearth-travel.com

PRICING

04-Mar-2026 to 27-Mar-2026

Aurora Stateroom Triple	28895 USD pp
Aurora Stateroom Twin	29795 USD pp
Balcony Stateroom - C	32295 USD pp
Balcony Stateroom - B	33995 USD pp
Balcony Stateroom - A	36595 USD pp
Balcony Stateroom Superior	39995 USD pp
Junior Suite	50095 USD pp
Captain's Suite	59495 USD pp

Optional extras & upgrades

Sea Kayaking. From 1745 USD

Scuba Diving. From 1295 USD

Snorkelling. From 835 USD

Paddling. From 640 USD



Wild Earth Travel
Small Ships, Big Adventures

0800 945 3327 (within New Zealand) | +64 (0) 3 365 1355 | 1800 107 715 (within Australia)

info@wildearth-travel.com | wildearth-travel.com