

# Wild Earth Travel

*Small Ships, Big Adventures*

**wildearth-travel.com**

**info@wildearth-travel.com**

## REALM OF PENGUINS & ICEBERGS - ANTARCTIC PENINSULA SMALL SHIP CRUISE

"Glittering white, shining blue, raven black, in the light of the sun the land looks like a fairy-tale." Roald Amundsen This expedition offers the essential experiences of the wildest and most fantastic place on Earth. The cruise begins in the city of Ushuaia - the southernmost city in the world. Next, we cross the Drake Passage on your way to the South Shetland Islands and the Antarctic Peninsula. On the return journey, you will have the opportunity to catch everything you missed the first time around. This is expedition cruising at its most authentic. Our route and exploration opportunities in Antarctica are heavily dependent on weather and ice conditions. Our experienced captain and expedition leader decide the itinerary and continually adjust plans as conditions and opportunities warrant. We take advantage of long daylight hours to exploit every opportunity to experience excellent wildlife viewing, amazing scenery, and excursions via Zodiac. The Antarctic Peninsula region contains some of the world's most impressive scenery and some of Antarctica's best wildlife viewing opportunities. Protected bays and narrow channels are surrounded by towering mountain peaks covered in permanent snow and immense glaciers. Icebergs of every size and description complete an image of incomparable beauty. Waters rich with krill are home to a variety of whale and seal species. The whole area is alive with penguins foraging at sea and forming large nesting colonies at special places on land. The area is also home to Antarctic research stations of various nationalities. Some stations have a gift shop and post office. Please note: some departures may be slightly shorter or longer. Please contact us for more details.



### ITINERARY

#### Day 1: Arrival in Ushuaia, Argentina (hotel night)

Welcome to Ushuaia, the world's southernmost city and starting point of our Antarctic expedition! Upon your arrival at the airport, you will be greeted by our staff and transferred to a quality hotel, which has been arranged by us and is included in the price of the itinerary. For the rest of the day, you are free to explore this vibrant port city and adventure hub. For an introduction to local history and wildlife, the interesting Museo del Fin del Mundo is worth a visit. If you have time to spare, a variety of nature activities can be arranged to suit all interests and fitness levels, from hiking in nearby Tierra del Fuego National Park to wildlife viewing in the Beagle Channel. For dinner, Ushuaia offers a wide range of restaurants featuring Patagonian lamb and delectable Fuegian seafood.

#### Day 2: Welcome Aboard!

Wild Earth Travel

*Small Ships, Big Adventures*

**0800 945 3327** (within New Zealand) | +64 (0) 3 365 1355 | **1800 107 715** (within Australia)

info@wildearth-travel.com | **wildearth-travel.com**



# Wild Earth Travel

*Small Ships, Big Adventures*

**wildearth-travel.com**

**info@wildearth-travel.com**

After breakfast at your hotel, the morning is yours to enjoy Ushuaia. Explore the delightful waterfront and savor views of the snowcapped Martial Range, the southernmost peaks of the Andes. Take advantage of shopping for souvenirs or some last-minute necessities such as cold-weather gear. Just remember, you will soon receive your very own parka to keep and waterproof boots to borrow on board the ship. For lunch, the many cafes, parrillas and gelato shops on Avenida San Martin will be sure to satisfy any appetite. In the afternoon, you will be transferred to the pier where we will warmly welcome you aboard the luxury expedition vessel M/V Sea Spirit. Get settled in your spacious suite and explore the ship that will be your comfortable home during the extraordinary adventure to come. After getting underway, a full schedule of events kicks off with informative briefings and introductions from your expedition staff. After the first of many delicious dinners on board, step out onto the open decks to admire the scenery and gorgeous evening light as we pass through the Beagle Channel.

## Day 3-4: Across the Drake Passage

After passing the islands of Tierra del Fuego, we turn south to begin our crossing of the Drake Passage. We watch for humpback and fin whales along the way. The majestic wandering albatross and other graceful subantarctic seabirds are common in these waters and can readily be viewed from panoramic open decks and balconies. We also cross the Antarctic Convergence, the biological boundary of the Southern Ocean. The ship's stabilizing fins provide comfort in the event of rough seas. Briefings, bio-security procedures and presentations by our lecture staff prepare you for our arrival in Antarctica. We hope to arrive in the South Shetland Islands on the evening of our second day at sea.

## Day 5-9: South Shetland Islands and Antarctic Peninsula

During the next four days, we explore the highlights of the South Shetland Islands and the Antarctic Peninsula. This region contains some of the world's most impressive scenery and the best wildlife viewing in Antarctica. Sheltered bays and channels sparkle with ice and reflect towering mountain peaks coated in permanent snow and immense glaciers. Icebergs of every size and description complete an image of incomparable beauty. Waters rich with krill are home to huge numbers of marine mammals and seabirds. The whole area is alive with penguins foraging at sea and forming large rookeries at special places on land. Here we also find Antarctic research bases of various

nationalities, some with gift shops and post offices. The South Shetland Islands are the northernmost islands in Antarctica and will likely be our first area of exploration. This wildly beautiful island chain contains many landing sites with historical significance and abundant wildlife. We will also explore the supremely picturesque Gerlache Strait area of the Antarctic Peninsula, a pristine wilderness of spectacular white landscapes, colossal icebergs, obliging marine mammals and bustling penguin colonies. We hope to show you the famous Lemaire Channel, also known as "Kodak Gap" because of the photogenic way the narrow channel reflects the image of sheer snowy mountains. Throughout the islands and on the mainland, we find nesting colonies of gentoo, chinstrap and Adelie penguins, sometimes side by side. At this time, penguin pairs are taking turns incubating their eggs. This is a good time to observe the importance of pebbles in penguin culture, as prized nesting material to be stolen from rivals and given to mates. Also at this time, a high concentration of sea ice provides opportunities for seals and penguins to congregate on ice floes, a situation that attracts killer whales. Minke whales have started to arrive and leopard seals can be spotted patrolling the coast near penguin colonies. Photographers will appreciate the pristine appearance of undisturbed snow across the landscape in this early summer month. In this rugged yet accessible environment, superb wildlife viewing is best complemented by active adventure. Our knowledgeable guides will offer hiking and hill climbing for an even greater perspective of this raw polar wilderness. For sea kayakers, the wildlife-rich waters of Antarctica offer many chances to paddle with seals and penguins in some of the world's most scenic waterways. To make the most of your time on the White Continent, you can also spend a night camping ashore, surrounded by untamed Antarctic nature. This is expedition cruising at its most authentic. Our precise route and exploration opportunities will be shaped by weather and ice. Our experienced captain and expedition leader will continually adjust plans to take maximum advantage of the conditions in this challenging polar environment. With nearly 20 hours of daylight per day, we seize every opportunity to experience excellent wildlife viewing and amazing scenery on shore excursions and Zodiac cruises.

## Day 10-11: Back across the Drake Passage

It is now time to head back across the Drake Passage toward South America, but the adventure is not quite over. Seabirds are our constant companions and there is always the possibility of whale encounters in these wild waters. This is also the time for festivities such as the Captain's Farewell Cocktail and the end-of-voyage slideshow. Finally, as we enter the calm Beagle Channel, we enjoy a night of smooth sailing toward Ushuaia.

## Day 12: Disembarkation in Ushuaia, Argentina



Wild Earth Travel  
*Small Ships, Big Adventures*

**0800 945 3327** (within New Zealand) | +64 (0) 3 365 1355 | **1800 107 715** (within Australia)

info@wildearth-travel.com | **wildearth-travel.com**



# Wild Earth Travel

*Small Ships, Big Adventures*



**wildearth-travel.com**

**info@wildearth-travel.com**

After yet another delicious breakfast on board, we bid you a fond farewell in Ushuaia. We provide a group transfer to the airport or to the city center if you wish to spend more time here. As you look back on your wonderful experience in Antarctica, you may already be looking forward to your next polar adventure!

Please note:

Itineraries are subject to change.



**Wild Earth Travel**

*Small Ships, Big Adventures*

**0800 945 3327** (within New Zealand) | +64 (0) 3 365 1355 | **1800 107 715** (within Australia)

info@wildearth-travel.com | **wildearth-travel.com**

# Wild Earth Travel

*Small Ships, Big Adventures*

**wildearth-travel.com**

**info@wildearth-travel.com**

## YOUR SHIP: SEA SPIRIT

<b>YOUR SHIP:</b>	<b>Sea Spirit</b>
<b>VESSEL TYPE:</b>	<b>Small Ship Expedition</b>
<b>LENGTH:</b>	<b>90 metres</b>
<b>PASSENGER CAPACITY:</b>	<b>114</b>
<b>BUILT/REFURBISHED:</b>	<b>1992 / 2017</b>

Like some of the birds we see in the Arctic and Antarctica, our m/v Sea Spirit is migratory and follows the sun, northbound in the summer and southbound in the winter, always ready for spontaneous discoveries - a pod of whales, a family of polar bears or a glaciated mountain vista. She is highly maneuverable and capable of navigating the narrow fjords of East Greenland and entering the small bays of Spitsbergen.

Onboard, we create a friendly and welcoming atmosphere for all our guests. They are united by one goal - to have a memorable wilderness experience and to become real polar adventurers. We believe that first-hand travel to such places makes one an ambassador for conservation, and helps strengthen our resolve to protect these natural environments for future generations.

Public areas include: Reception, Restaurant, Bar, Outdoor Bistro, Club Lounge, Library, Presentation Lounge, Infirmary, Gym, Bridge.

We have open Bridge policy. Talk to the Captain and officers. Watch landscapes from this special angle of view. Fix your location at a map of your expedition.



Wild Earth Travel

*Small Ships, Big Adventures*

**0800 945 3327** (within New Zealand) | +64 (0) 3 365 1355 | **1800 107 715** (within Australia)

info@wildearth-travel.com | **wildearth-travel.com**

# Wild Earth Travel

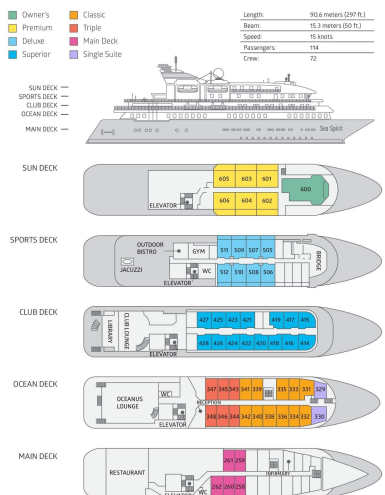
*Small Ships, Big Adventures*

[wildearth-travel.com](http://wildearth-travel.com)

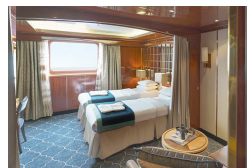
[info@wildearth-travel.com](mailto:info@wildearth-travel.com)

## INSIDE YOUR SHIP

### DECK PLAN M/V SEA SPIRIT



### Classic Suite



### Deluxe Suite



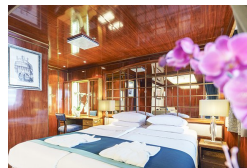
### Main Deck Suite



### Owner's Suite



### Premium Suite



### Superior Suite



### Triple Classic



# Wild Earth Travel

*Small Ships, Big Adventures*

**wildearth-travel.com**

**info@wildearth-travel.com**

## PRICING

### 07-Feb-2026 to 18-Feb-2026

Triple Classic	16095 AUD pp
Main Deck Suite	21295 AUD pp
Classic Suite	22895 AUD pp
Superior Suite	23295 AUD pp
Deluxe Suite	25895 AUD pp
Premium Suite	27895 AUD pp
Owner's Suite	35195 AUD pp

### 17-Feb-2026 to 28-Feb-2026

Triple Classic	16095 AUD pp
Main Deck Suite	21295 AUD pp
Classic Suite	22895 AUD pp
Superior Suite	23295 AUD pp
Deluxe Suite	25895 AUD pp
Premium Suite	27895 AUD pp
Owner's Suite	35195 AUD pp

### 28-Nov-2026 to 09-Dec-2026

Triple Classic	18195 AUD pp
Main Deck Suite	23995 AUD pp
Classic Suite	25695 AUD pp
Superior Suite	26095 AUD pp
Deluxe Suite	28995 AUD pp
Premium Suite	31195 AUD pp
Owner's Suite	39395 AUD pp

### 08-Dec-2026 to 19-Dec-2026

Triple Classic	18195 AUD pp
Main Deck Suite	23995 AUD pp
Classic Suite	25695 AUD pp
Superior Suite	26095 AUD pp
Deluxe Suite	28995 AUD pp
Premium Suite	31195 AUD pp
Owner's Suite	39395 AUD pp

### 18-Feb-2027 to 01-Mar-2027

Triple Classic	18195 AUD pp
Main Deck Suite	23995 AUD pp
Classic Suite	25695 AUD pp
Superior Suite	26095 AUD pp
Deluxe Suite	28995 AUD pp
Premium Suite	31195 AUD pp
Owner's Suite	39395 AUD pp



# Wild Earth Travel

*Small Ships, Big Adventures*



**wildearth-travel.com**

**info@wildearth-travel.com**

## PRICING

**28-Feb-2027 to 11-Mar-2027**

<b>Triple Classic</b>	<b>16495 AUD pp</b>
<b>Main Deck Suite</b>	<b>21795 AUD pp</b>
<b>Classic Suite</b>	<b>23395 AUD pp</b>
<b>Superior Suite</b>	<b>23795 AUD pp</b>
<b>Deluxe Suite</b>	<b>26395 AUD pp</b>
<b>Premium Suite</b>	<b>28395 AUD pp</b>
<b>Owner's Suite</b>	<b>35895 AUD pp</b>



**Wild Earth Travel**

*Small Ships, Big Adventures*

**0800 945 3327** (within New Zealand) | +64 (0) 3 365 1355 | **1800 107 715** (within Australia)

info@wildearth-travel.com | **wildearth-travel.com**



# Wild Earth Travel

*Small Ships, Big Adventures*



**wildearth-travel.com**

**info@wildearth-travel.com**

## 10% OFF

Early Bird Discount (10% off Triple, Main Deck, Single, and Classic Suites; 15% off Superior, Deluxe, Premium, and Owner's Suites) is available till July 31, 2025. Terms and conditions apply. This special offer is subject to availability. Please contact us for more details.

### Optional extras & upgrades

#### Camping. From

If you're looking for an unforgettable way to expand your experience on the White Continent, then Antarctica Camping may be the perfect choice for you. This optional activity is your unique opportunity to meet Antarctica on its own terms by spending a night out on the snow and ice!

#### Photography FREE

The Polar Regions are perhaps the most photogenic on earth, with countless beautiful scenes presenting themselves every day. Endless expanses of ice, beaches crowded with seals or penguins, sunsets over unbroken horizons, starlit skies, and even the majestic northern lights – they all present fantastic photographic opportunities – and in order to make sure that you come home with some spectacular images we offer you the chance to learn and practice your photography alongside an experienced professional.

#### Kayaking. From

Antarctica is a paddlers' paradise. The White Continent boasts some of the world's most impressive landscapes and is home to incredible marine wildlife. Sea Kayak Club members will have the opportunity to paddle through tranquil waters filled with glittering icebergs and porpoising penguins while surrounded by magnificent glaciers and mountains.



Wild Earth Travel

*Small Ships, Big Adventures*

**0800 945 3327** (within New Zealand) | +64 (0) 3 365 1355 | **1800 107 715** (within Australia)

info@wildearth-travel.com | **wildearth-travel.com**