



Wild Earth Travel

Small Ships, Big Adventures



wildearth-travel.com

info@wildearth-travel.com

21 DAYS LUXURY ANTARCTICA EXPEDITION WITH SOUTH GEORGIA - PUERTO WILLIAMS TO PUERTO WILLIAMS

Feel the adrenaline pulsing as you step out onto remarkable lands at the foot of the world. Begin with far-flung islands packed with lively wildlife - like the Falklands, where crowds of king penguins clamour. Push south across Drake's Passage towards Antarctica's wintery glories. Cruise between mighty icebergs before making land on the pristine Antarctic Peninsula. Penguins, seals and whales are all waiting to be discovered in this undisturbed, untamed kingdom of the south.

Wild Earth Travel
Small Ships, Big Adventures

0800 945 3327 (within New Zealand) | +64 (0) 3 365 1355 | **1800 107 715** (within Australia)

info@wildearth-travel.com | **wildearth-travel.com**

Wild Earth Travel

Small Ships, Big Adventures

wildearth-travel.com

info@wildearth-travel.com



world", however owing to its small size - 2500 residents approximately - the much larger Argentinean city of Ushuaia, which sits on the northern side of the same channel, also claims that title. The surrounding scenery is magnificent. The wild windswept mountains rise above the tree line and are regularly dusted with snow. The city itself has the dramatic backdrop called "Dientes de Navarino" (literally "teeth of Navarino"), which rival the famous Torres del Paine further to the north. The area was originally used by the Yaghan people, hunter-gatherers who despite enduring the harsh regional climate, could not weather the arrival of Europeans. The current city was established as a naval base in 1953 and honours the British-Chilean naval commander John Williams Wilson of the 16th century. Initially it served to protect territorial possessions and fishing rights of the area, as well as offering logistical support to Antarctic bases. More recently it has become a departure point for scientific and tourism trips to the Antarctic region. In contrast to the bustle and traffic of a very commercial Ushuaia, Puerto Williams offers a quieter, more relaxed experience. It charms the visitor with a small village feel, complete with rustic buildings and the homely smell of drifting wood smoke. A haven of peace at the end of the world.

Day 3 Day at sea INTERNATIONAL WATERS

Days at sea are the perfect opportunity to relax, unwind and catch up with what you've been meaning to do. So whether that is going to the gym, visiting the spa, whale watching, catching up on your reading or simply topping up your tan, these blue sea days are the perfect balance to busy days spent exploring shore side.

Day 4 New Island FALKLAND ISLANDS & West Point Island FALKLAND ISLANDS

Remote and raw, New Island lies to the west of the Falkland Islands, and the humble human population here is far outweighed by the extraordinary birdlife that resides along its craggy coastline. Out in the tempestuous wilds of the South Atlantic Ocean, the island is a sanctuary of animal life - with crowds of rockhopper penguins, wrinkled seals and stern-looking albatross among its many residents. The penguins of the Falklands are a sight to see, fooling and falling on the beaches, before diving in and whipping through the waters. Home to five different species, including king penguins - who strut with their orange collars glowing against the pure white feathers of their chests. Sea lions, seals and elephant seals bark and lumber along the shoreline, while sleek orcas patrol and Peale's dolphins cut through the waves. Settlement

ITINERARY

Day 1 Pre Cruise

_ **Pre Cruise Benefits - Private Executive Transfers, International flights - Economy class or Business Class upgrade, Airport transfers, Hotel, In-country flights/Group flights**_

Day 2 Puerto Williams CHILE

Puerto Williams is a Chilean city located on Navarino Island on the southern shores of the Beagle Channel. It claims to be the "southernmost city in the

Wild Earth Travel

Small Ships, Big Adventures

0800 945 3327 (within New Zealand) | +64 (0) 3 365 1355 | 1800 107 715 (within Australia)

info@wildearth-travel.com | wildearth-travel.com



Wild Earth Travel

Small Ships, Big Adventures

wildearth-travel.com

info@wildearth-travel.com

Rookery's cliffs rattle with the sounds of crashing sea waves, and the echoing shouts of hollering black-browed albatross, king cormorants and rockhopper penguins. Enjoy gorgeous sweeping landscapes, littered with shipwrecks and sprinkles of colourful wildflowers. A warm welcome is guaranteed, especially when the local custom of smoko is served up - towering platters of cakes and biscuits with tea and coffee. Things haven't always been so peaceful here, however, and you can pay a visit to the battlefields and memorials of the costly war in 1982, when the British and Argentinians clashed fiercely over these islands. A north-westerly outpost of the scenic Falkland Islands, you'll be welcomed ashore by the calls and cries of a huge colony of black-browed albatross. Indeed, the island was originally known as Albatross Island before being renamed to reflect its geographic location. While the albatrosses - that flash white feathers in the rugged cliffs above the waves - are the most well known residents, they are far from the only animal inhabitants of this remote, isolated land. A huge army of birdlife calls the island sanctuary home, overwhelming the tiny human population and sheep that roam West Point Island's grasses. Meet the rockhopper penguins who scamper and burrow along the coast's boulders, as well as the imperial cormorants who rest here in great numbers. You're also likely to encounter Magellanic penguins during your explorations. Hike the island's quiet landscapes, and look out for endemic plants like Felton's flower carpeting the green interior. Decorated with some of the archipelago's most dramatic scenery, explore this wind-lashed, distant land of soaring cliffs and towering coastal precipices. Cliff Mountain is the island's standout - a towering sandstone monolith, and the archipelago's highest cliff, falling away to swirling waves below. Look out to the waters to spot Commerson's dolphin chasing each other around the island's wave-washed footprint. Whales also visit, as well as the fur seals who you may spot lounging around West Point Island's inviting shores.

Day 5 Port Stanley FALKLAND ISLANDS

Despite it being a stalwart of Britishness, Stanley more resembles Patagonia than Portsmouth. But, despite the windswept, vast and achingly beautiful landscape of the Falkland Islands, don't be too surprised to find the odd pub serving ales and even fish'n'chips. While landmarks such as Christ Church Cathedral, with its whalebone arch are 100% local, there is also good smattering of imported garden gnomes and Union Jacks to remind you whose territory you are really on. The Falkland Islands' ownership has long been a matter of controversy, ever since colonisation in the 18th century. At various points in their life they have been considered French, British, Spanish and Argentine. The Falklands War in 1982, despite only lasting for a short while, proved that the Brits clung to this remote outpost and the islands remain part of the British Commonwealth today. Margaret Thatcher, under whom the war

was masterminded, remains something of a local hero as can be seen in the street signs (such as Thatcher Drive). For those who want to dig deeper into the past, the Historic Docklands Museum provides lots of information on the chequered historical and political background of the Falklands. However, the true heroes of Stanley are of course the thousands and thousands of penguins. Five species nest here during mating season (including the rare rockhopper penguin). There are virtually no barriers between you and the wildlife; allowing for a truly interactive, authentic and totally unforgettable experience.

Days 6 - 7 Day at sea INTERNATIONAL WATERS

Days at sea are the perfect opportunity to relax, unwind and catch up with what you've been meaning to do. So whether that is going to the gym, visiting the spa, whale watching, catching up on your reading or simply topping up your tan, these blue sea days are the perfect balance to busy days spent exploring shore side.

Days 8 - 10 South Georgia SOUTH GEORGIA AND THE SOUTH SANDWICH ISLANDS

Charcoal-black mountains ladled with snow, giant glaciers and thriving wildlife combine to make South Georgia one of the great natural islands. Adventure to these far flung lands - where the animals are in charge and humans come a distant second. Here you'll witness a cacophony of calling birds, natural set pieces like elephant seals clashing and thrashing, and crowds of colourful king penguins stretching out as far as the eye can see. An overseas territory of the UK, these isolated, subantarctic islands once formed a remote whaling centre - and you can still visit the former whaling stations. Nowadays the giants of the sea are free to cruise the icy waters uninhibited. Written into explorer history due to its links with Ernest Shackleton's tale of Antarctic exploration, shipwreck and survival, the Endurance's crew were saved when he reached the salvation of these shores in 1916 - before returning to collect the remaining sailors from Elephant Island. A museum commemorates the legendary mission, and you can see the memorial to Shackleton that stands over his final resting place on this fabled island. South Georgia's colonies of king penguins - with vivid bursts of yellow and orange around their necks - stand, squabble and curiously investigate, enjoying the isolated respite of this island. They're joined by smaller penguin species like Macaroni penguins, and other glorious birdlife like the majestic wandering albatrosses, which you can see gliding on gusts of wind, over the choppy waves.



Wild Earth Travel

Small Ships, Big Adventures

wildearth-travel.com

info@wildearth-travel.com

Days 11 - 12 Day at sea INTERNATIONAL WATERS

Days at sea are the perfect opportunity to relax, unwind and catch up with what you've been meaning to do. So whether that is going to the gym, visiting the spa, whale watching, catching up on your reading or simply topping up your tan, these blue sea days are the perfect balance to busy days spent exploring shore side.

Day 13 Elephant Island ANTARCTICA

Promising thrilling adventure, legendary tales and immaculate Antarctic beauty, Elephant Island is perhaps Antarctica's best-known location. The exploits of its early explorers have immortalised this harsh, monochrome island in the tomes of human history. Believed to take its name from the elephant seals that early explorers spotted lolling on its rocks, the volcanic island was not properly explored until 1916 - when Ernest Shackleton and his men were stricken by the weather and sought salvation on its shores. Their story of survival, stranded in this barren land, is one of humanity's most evocative and inspiring accounts. Elephant Island is written deep into the legend of Antarctic exploration, and you'll discover Shackleton's tale for yourself as you arrive in the island's icy realm. The remarkable, slowly flowing Endurance Glacier - which you'll see on arrival here - takes its name from their ship, The Endurance. Visit the monument that stands to Shackleton, often surrounded by a migrating crowd of tiny gentoo penguins, at Point Wild - the spot where he and his 28 crew members camped for four and a half months of Antarctic winter. Eventually, Shackleton and a handful of courageous others sailed for South Georgia Island, before returning to secure the rescue of the remaining crew members. Aside from sailing amid breathtaking winter vistas, witnessing incredible fauna and feeling the sheer rush of an adventure to the unknown - one of the true joys of any Antarctic cruise is to follow in the footsteps of the brave explorers who first sought out the alluring nectar of these dangerous, evocative landscapes. If this will be your first-time visiting Antarctica, read our blog explaining how you can prepare for the exploits ahead.

Day 14 Antarctic Sound ANTARCTICA

Few voyages ignite the imagination like a journey down to one of the planet's most remote, extreme and enchanting wilderness, Antarctica. An adventure in its purest form, only a handful of people will ever be lucky enough to experience the majestic beauty of these monochrome landscapes first-hand.

The Antarctic Sound will be one of your first encounters of this whitewash kingdom, located at the northerly tip of the Antarctic Peninsula - which sprawls up like a tentacle towards Tierra del Fuego, South America's most southerly point, otherwise known as the 'End of the World'. Taking its name from the first ship to brave the passageway between the peninsular and the Joinville Island groups back in 1902, the Sound is a raw, sensory assault of imposing iceberg slabs, broken away from the disintegrating Larsen Ice Shelf. Come face-to-face with stadium-sized islands of ice and meet the extraordinary birdlife that call this whitewash kingdom home. Watch on, as colonies of Gentoo penguins hop around, and cape petrels sweep overhead, as the continent's unique wildlife thrives around you. If you're planning your first venture into Antarctica, you'll want to brush up on your photography skills in advance, to capture this unforgiving continent in all of its unrestrained glory. Read our blog for tips on how to ensure that your photos do justice to the adventure of a lifetime.

Days 15 - 16 Antarctic Peninsula ANTARCTICA

The Antarctic Peninsula unravels upwards towards South America, reaching out a beckoning finger to the adventurous, who dare to explore this untamed realm. Stretching up from the heart of the world's southernmost continent, the Antarctic Peninsula lies a mere 620 mile from Tierra del Fuego and, for many, offers a spectacular first taste of the snow-blanketed landscapes and colossal ice sculptures, which make up Earth's least-explored continent. Unseen by humans until 1820 - a blink of an eye ago in relative terms - this is an adventure sure to make your hairs stand on end, as you experience the thrill of the truly unknown and extraordinary. The vast peninsula is sprinkled with research bases, which are at the frontline of human scientific endeavour, pushing to study and understand this unique landscape, its exceptional wildlife, and the impact that humans are having on this pristine continent. Witness cathedral-sized icebergs up close, and blue-hued glaciers, slowly slipping from imposing locations like Hope Bay. Blanched mountain peaks cover the peninsula, and you'll find thousands of adorable Adelie penguin pairs thriving undisturbed in this peninsula's unique setting.

Day 17 South Shetland Islands SOUTH SHETLAND ISLANDS, ANTARCTICA

The ice-coated Antarctic Peninsula forms perhaps the most accessible region of mainland Antarctica, lying a mere 480-miles away from South America, across the fabled waters of Drakes Passage. Lying close to the northwestern tip of the Antarctic Peninsula, separated by the Bransfield Strait, the South

Wild Earth Travel

Small Ships, Big Adventures

0800 945 3327 (within New Zealand) | +64 (0) 3 365 1355 | **1800 107 715** (within Australia)

info@wildearth-travel.com | **wildearth-travel.com**

Wild Earth Travel

Small Ships, Big Adventures

wildearth-travel.com

info@wildearth-travel.com

Shetland Islands fall under the jurisdiction of the Antarctic Treaty, suspending claims on their sovereignty. Several countries maintain research bases here, and with plump elephant seals, and crowds of Gentoo, Chinstrap and Adelie Penguins also calling the islands home, it can even feel a little crowded at times. King George Island is the largest and most hospitable island, hosting the majority of the research stations - some of which are populated all-year-round by tiny, hardy crews. Don't be fooled though, these islands offer extraordinary adventure in one of the most remote locations on earth. The triple peaks of Mount Foster tower above the archipelago, and you'll feel your heart pumping a little quicker, as you sail into the core of Deception Island's magnificent collapsed volcano caldera. Hike the luna landscapes within, and even dip into the improbably warm, geothermally-heated waters of Pendulum Cove. Elephant Island, meanwhile, is written deep into the annals of Antarctic expedition legend, as the site where Ernest Shackleton and the stricken crew of the Endurance miraculously survived a harsh Antarctic winter, in 1916. Discover even more reasons to visit this incredible icy kingdom and find out why many consider the South Shetland Islands to be the jewel in Antarctica's Crown, by reading our blog.

Day 18 Drake Passage INTERNATIONAL WATERS

Sailing the legendary Drake Passage is an experience that few are ever lucky enough to experience. The southern tip of the Americas already feels like a wild enough environment - but the sensation of watching the distant cliffs of the peninsular known as the 'End of the World' fade into the horizon, is one that's equal parts epic, eerie and magical. Set sail, to slowly drop off the bottom of the map from Cape Horn, and voyage on an expedition down into the icy underworld of Antarctica. Drake Passage is an extraordinary voyage of romantic ocean faring legend, as you aim for Antarctica's icy realm. On arrival, skyscraper sized icebergs salute you, as you traverse the waters of this continent where snow and ice dwelling creatures like penguins and whales roam undisturbed. Your first sight of this most-unexplored place will most likely be the South Shetland Islands. Walk in the footsteps of some of history's greatest and bravest explorers as you explore famed, snow-covered landmasses like Elephant and Deception Island. If the journey across Drake Passage sounds daunting, don't worry - even in rough seas you're never alone, and will often be accompanied on this spine-tingling adventure by soaring albatrosses and maybe even a protective pod of humpbacks and hourglass dolphins or two. Converging warm and cool ocean currents attract some spectacular animal life to the passage. If this is your first visit to this magical continent, you'll also want to familiarise yourself with our blog for first timers to Antarctica.

Day 19 Cruising Cape Horn CHILE

In the past, no two words conjured up more fear to sailors than Cape Horn. With its reputation of ferocious storms and mountainous seas it was a place where a seafarer garnered respect for bravery against the odds. That is, if he lived to tell the tale (he also got to wear a gold hoop ear-ring and dine with one foot up on the table). The Cape itself is the rugged insular tip of South America that projects into the storm-swept Drake Passage. The Dutch sailor Willem Schouten and merchant Jacob Le Maire, both from the town of Hoorn (hence Cape Horn), put it on the map in 1616 when attempting to circumvent the trade monopoly exercised by the Dutch East India Company over the Straits of Magellan. Once an unavoidable physical gateway to adventure and commerce in the Pacific Ocean, Cape Horn nowadays has more of a spiritual attraction, drawing intrepid travellers to pay homage to the brave sailors who, by necessity, attempted to pass this wild and inhospitable headland. During clear weather, when the island is free from the frequent icy squalls that batter its shores, a 7-metre (23 feet) high steel monument can be seen standing about 1.5 kilometres (1 mile) away from the true cape, near the Chilean navy station. It depicts the silhouette of an albatross, a bird that is said to carry the souls of those sailors who perished "rounding the Horn". With that in mind, consider yourself lucky to confront the Horn on a luxury Expedition cruise ship rather than from the wave-washed and perilous deck of a windjammer.

Day 20 Puerto Williams CHILE

Puerto Williams is a Chilean city located on Navarino Island on the southern shores of the Beagle Channel. It claims to be the "southernmost city in the world", however owing to its small size - 2500 residents approximately - the much larger Argentinean city of Ushuaia, which sits on the northern side of the same channel, also claims that title. The surrounding scenery is magnificent. The wild windswept mountains rise above the tree line and are regularly dusted with snow. The city itself has the dramatic backdrop called "Dientes de Navarino" (literally "teeth of Navarino"), which rival the famous Torres del Paine further to the north. The area was originally used by the Yaghan people, hunter-gatherers who despite enduring the harsh regional climate, could not weather the arrival of Europeans. The current city was established as a naval base in 1953 and honours the British-Chilean naval commander John Williams Wilson of the 16th century. Initially it served to protect territorial possessions and fishing rights of the area, as well as offering logistical support to Antarctic bases. More recently it has become a departure point for scientific and tourism trips to the Antarctic region. In contrast to the bustle and traffic of a very commercial Ushuaia, Puerto Williams offers a quieter, more relaxed

Wild Earth Travel

Small Ships, Big Adventures

0800 945 3327 (within New Zealand) | +64 (0) 3 365 1355 | **1800 107 715** (within Australia)

info@wildearth-travel.com | wildearth-travel.com



Wild Earth Travel

Small Ships, Big Adventures

wildearth-travel.com

info@wildearth-travel.com

experience. It charms the visitor with a small village feel, complete with rustic buildings and the homely smell of drifting wood smoke. A haven of peace at the end of the world.

Day 21 Post cruise

_ **Post Cruise Benefits - In-country flights/Group flights, Hotel, Airport transfers, International flights - Economy class or Business Class upgrade, Private Executive Transfers** _

Please Note:

The excursions are provided as a sample of what may be offered on this voyage and are subject to change.



0800 945 3327 (within New Zealand) | +64 (0) 3 365 1355 | **1800 107 715** (within Australia)

info@wildearth-travel.com | **wildearth-travel.com**

Wild Earth Travel

Small Ships, Big Adventures

wildearth-travel.com

info@wildearth-travel.com

YOUR SHIP: SILVER CLOUD

YOUR SHIP:	Silver Cloud
VESSEL TYPE:	Luxury Expedition
LENGTH:	157 m
PASSENGER CAPACITY:	200/260
BUILT/REFURBISHED:	1994 Refurbished & Rebranded

Silver Cloud delivers one of the most personalised expedition experiences at sea, blending ultra-luxury with true adventure. As Silversea's first crossover ship, she's built for both comfort and exploration, offering large ocean-facing suites--80% with verandas--and an impressive 1:1 crew-to-guest ratio. With 20 Zodiacs and 10 kayaks, guests enjoy unparalleled access to remote locations, while expert-led excursions ensure meaningful encounters with nature and culture alike. From the icy reaches of Antarctica to the sun-kissed South Pacific, Silver Cloud brings the remarkable within easy reach.

On board, refined living continues with four elegant dining venues, including French fine dining at La Dame and authentic Italian at La Terrazza. Relax in stylish public areas such as the Panorama Lounge or Connoisseur's Corner, indulge in world-class spa treatments, or learn more about your destinations from passionate experts in the Explorer Lounge. Whether you're cruising the Kimberley or the Chilean fjords, Silver Cloud offers a sophisticated base for discovering the far corners of the world in sublime comfort.



Wild Earth Travel

Small Ships, Big Adventures

0800 945 3327 (within New Zealand) | +64 (0) 3 365 1355 | **1800 107 715** (within Australia)

info@wildearth-travel.com | wildearth-travel.com

Wild Earth Travel

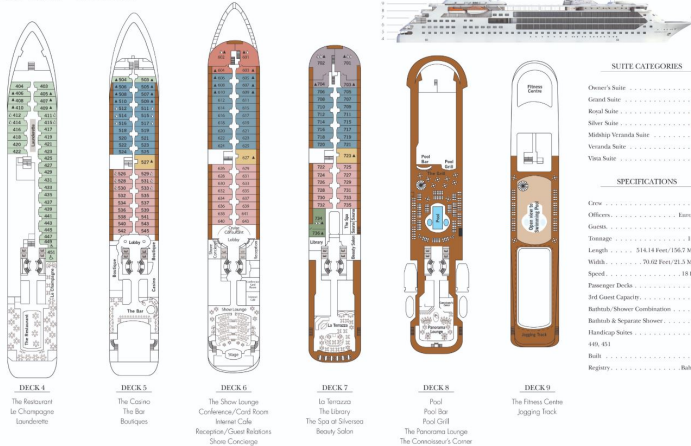
Small Ships, Big Adventures

wildearth-travel.com

info@wildearth-travel.com

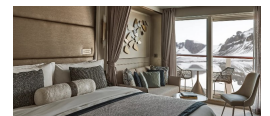
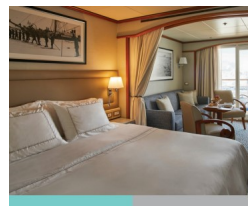
INSIDE YOUR SHIP

Silver Cloud - DECK PLAN



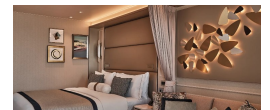
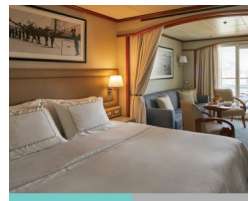
CLASSIC VERANDA SUITE. From

Classic Veranda Suite



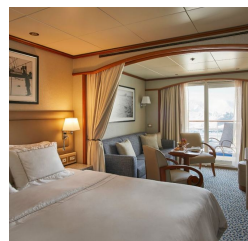
DELUXE VERANDA SUITE. From

Deluxe Veranda Suite



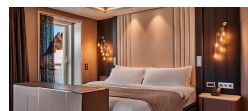
Deluxe Veranda Suite. From

GRAND SUITE. From



Owner's Suite

Premium Veranda Suite



Wild Earth Travel

Small Ships, Big Adventures

0800 945 3327 (within New Zealand) | +64 (0) 3 365 1355 | 1800 107 715 (within Australia)

info@wildearth-travel.com | wildearth-travel.com

Wild Earth Travel

Small Ships, Big Adventures

wildearth-travel.com

info@wildearth-travel.com

PRICING

04-Nov-2025 to 23-Nov-2025

VISTA SUITE. From	27100 USD pp
MEDALLION SUITE. From	39600 USD pp
SILVER SUITE. From	43300 USD pp
ROYAL SUITE. From	47200 USD pp
GRAND SUITE. From	51500 USD pp
OWNER'S SUITE. From	56000 USD pp
Royal 2 Bedroom	72900 USD pp
Grand 2 Bedroom	77200 USD pp
Owner 2 Bedroom	80400 USD pp
DELUXE VERANDA SUITE. From	0 pp
CLASSIC VERANDA SUITE. From	0 pp

07-Nov-2025 to 26-Nov-2025

Vista Suite. From	26800 USD pp
Veranda Suite. From	28300 USD pp
Deluxe Veranda Suite. From	29600 USD pp
Medallion Suite. From	38300 USD pp
Silver Suite. From	40100 USD pp
Royal 1 Bedroom	45800 USD pp
Grand 1 Bedroom	47800 USD pp
Owner 1 Bedroom	52100 USD pp
Royal 2 Bedroom	71300 USD pp
Grand 2 Bedroom	73300 USD pp
Owner 2 Bedroom	76200 USD pp

22-Nov-2025 to 11-Dec-2025

VISTA SUITE. From	27800 USD pp
MEDALLION SUITE. From	39300 USD pp
SILVER SUITE. From	43000 USD pp
ROYAL SUITE. From	46900 USD pp
GRAND SUITE. From	51200 USD pp
OWNER'S SUITE. From	55800 USD pp
Royal 2 Bedroom	73300 USD pp
Grand 2 Bedroom	77600 USD pp
Owner 2 Bedroom	80800 USD pp
DELUXE VERANDA SUITE. From	0 pp
CLASSIC VERANDA SUITE. From	0 pp

Wild Earth Travel

Small Ships, Big Adventures

wildearth-travel.com

info@wildearth-travel.com

PRICING

20-Dec-2025 to 08-Jan-2026

VISTA SUITE. From	30000 USD pp
MEDALLION SUITE. From	42500 USD pp
SILVER SUITE. From	46400 USD pp
ROYAL SUITE. From	50700 USD pp
GRAND SUITE. From	55400 USD pp
OWNER'S SUITE. From	60300 USD pp
Royal 2 Bedroom	78800 USD pp
Grand 2 Bedroom	83500 USD pp
Owner 2 Bedroom	87300 USD pp
DELUXE VERANDA SUITE. From	0 pp
CLASSIC VERANDA SUITE. From	0 pp

05-Jan-2026 to 24-Jan-2026

Classic Veranda Suite	38000 USD pp
Superior Veranda Suite	39400 USD pp
Deluxe Veranda Suite	41000 USD pp
Premium Veranda Suite	42100 USD pp
Silver Suite	56300 USD pp
Grand Suite	101900 USD pp
Owner's Suite	134300 USD pp

14-Feb-2026 to 05-Mar-2026

Classic Veranda Suite	37600 USD pp
Superior Veranda Suite	39000 USD pp
Deluxe Veranda Suite	40600 USD pp
Premium Veranda Suite	41700 USD pp
Silver Suite	55400 USD pp
Grand Suite	101000 USD pp
Owner's Suite	133400 USD pp

03-Nov-2026 to 22-Nov-2026

Vista	44600 AUD pp
Medallion	66900 AUD pp
Silver	84900 AUD pp
Royal 1 Bedroom	89900 AUD pp
Grand 1 Bedroom	102200 AUD pp
Owner 2 Bedroom	125800 AUD pp
Owner 1 Bedroom	129400 AUD pp
Royal 2 Bedroom	114800 AUD pp
Grand 2 Bedroom	120500 AUD pp
Veranda	0 pp
Midship Veranda	0 pp

Wild Earth Travel

Small Ships, Big Adventures

wildearth-travel.com

info@wildearth-travel.com

PRICING

06-Nov-2026 to 26-Nov-2026

Vista	27900 USD pp
Medallion	46900 USD pp
Silver	50000 USD pp
Royal 1 Bedroom	54700 USD pp
Grand 1 Bedroom	59900 USD pp
Owner 1 Bedroom	65600 USD pp
Royal 2 Bedroom	82500 USD pp
Grand 2 Bedroom	87700 USD pp
Owner 2 Bedroom	90700 USD pp
Midship Veranda	0 pp
Veranda	0 pp

Vista	47800 AUD pp
Veranda	51600 AUD pp
Midship Veranda	55700 AUD pp
Medallion	68100 AUD pp
Silver	87700 AUD pp
Royal 1 Bedroom	93100 AUD pp
Grand 1 Bedroom	106400 AUD pp
Grand 2 Bedroom	152800 AUD pp
Owner 2 Bedroom	119400 AUD pp
Owner 1 Bedroom	135800 AUD pp
Royal 2 Bedroom	139500 AUD pp

21-Nov-2026 to 10-Dec-2026

Vista	44800 AUD pp
Medallion	66900 AUD pp
Silver	84900 AUD pp
Royal 1 Bedroom	89900 AUD pp
Grand 1 Bedroom	102200 AUD pp
Owner 2 Bedroom	125800 AUD pp
Owner 1 Bedroom	129400 AUD pp
Royal 2 Bedroom	114800 AUD pp
Grand 2 Bedroom	120500 AUD pp
Veranda	0 pp
Midship Veranda	0 pp

20-Dec-2026 to 08-Jan-2027

Wild Earth Travel
Small Ships, Big Adventures

0800 945 3327 (within New Zealand) | +64 (0) 3 365 1355 | **1800 107 715** (within Australia)

info@wildearth-travel.com | wildearth-travel.com