

Wild Earth Travel

Small Ships, Big Adventures

wildearth-travel.com

info@wildearth-travel.com

POLAR CIRCLE QUEST ABOARD USHUAIA

Expedition cruise to the Antarctic Peninsula, South Shetland Islands, & endeavor to cross the Polar Circle. Aboard the USHUAIA



ITINERARY

Day 1: Depart from Ushuaia

Embark the USHUAIA in the afternoon and meet your expedition and lecture staff. After you have settled into your cabins we sail along the famous Beagle Channel and the scenic Mackinlay Pass.

Day 2 & 3: At Sea. Crossing the Drake Passage

Named after the renowned explorer, Sir Francis Drake, who sailed these waters in 1578, the Drake Passage also marks the Antarctic Convergence, a biological barrier where cold polar water sinks beneath the warmer northern waters. This creates a great upwelling of nutrients, which sustains the biodiversity of this region. The Drake Passage also marks the northern limit of

Wild Earth Travel

Small Ships, Big Adventures

0800 945 3327 (within New Zealand) | +64 (0) 3 365 1355 | **1800 107 715** (within Australia)

info@wildearth-travel.com | **wildearth-travel.com**



Wild Earth Travel

Small Ships, Big Adventures

wildearth-travel.com

info@wildearth-travel.com

many Antarctic seabirds. As we sail across the passage, Antaply Expeditions' lecturers will be out with you on deck to help with the identification of an amazing variety of seabirds, including many albatrosses, which follow in our wake. The USHUAIA's open bridge policy allows you to join our officers on the bridge and learn about navigation, watch for whales, and enjoy the view. A full program of lectures will be offered as well. The first sightings of icebergs and snow-capped mountains indicate that we have reached the South Shetland Islands, a group of twenty islands and islets first sighted in February 1819 by Capt. William Smith of the brig Williams. With favorable conditions in the Drake Passage our lecturers and naturalists will accompany you ashore as you experience your first encounter with the penguins and seals on Day 3.

Days 4 to 9: Exploring the Antarctic Peninsula, the South Shetland Islands, and endeavor to cross the Polar Circle

Exquisite beauty and pristine landscapes are waiting for you on the western side of the Antarctic Peninsula. Myriads of icebergs with different shades and shapes are floating free in the waterways around the continent. The Antarctic Peninsula's remarkable history will also provide you with a type of excitement often only associated with the early explorers. You will have plenty of time to explore its amazing scenery and a wide variety of wildlife. Apart from Adélie, Gentoo and Chinstrap Penguins and other seabirds you are likely to encounter Weddell, crabeater, fur and leopard seals as well as Minke whales and orcas at close range. At this time of year it is also very likely to encounter big cetaceans, such as humpback, Finn and Sei whales in the area. We hope to navigate some of the most beautiful waterways the area has to offer, such as: the Gerlache Strait, Errera Channel, Neumayer Channel and the extremely narrow Lemaire Channel. Possible landing sites may include: Paradise Bay, which is perhaps the most aptly named place in the world with its impressive glacial fronts and mountains, Cuverville Island, home of the biggest Gentoo Penguin colony in the Peninsula surrounded by glaciers and castellated icebergs, and the British Museum and Post office Port Lockroy. As further exploration will lead us far South of the Lemaire Channel in quest of the Polar Circle, we might also visit the Ukrainian Station Vernadsky, the former British base Faraday, where the ozone hole was first spotted, the rugged Yalour Islands and south of the Polar Circle Detaille Island. On our way North we plan to explore the South Shetland Islands. The volcanic island group is a haven for wildlife. Vast penguin rookeries and seals hauling out on the shorelines make every day spent here unforgettable. Sailing through the narrow passage into the flooded caldera of Deception Island is truly amazing, so is visiting the crescent shaped island Half Moon, home to Chinstrap Penguins in breathtaking surroundings.

Days 10 & 11: At Sea. Crossing the Drake Passage, northbound

We leave Antarctica and head north across the Drake Passage. Join our lecturers and naturalists on deck as we search for seabirds and whales and enjoy some final lectures. Take the chance to relax and reflect on the fascinating adventures of the past days on the way back to Ushuaia.

Day 12: Arrival in Ushuaia

We arrive at the port of Ushuaia in the early morning and disembark the USHUAIA after breakfast.

Please Note:

The above itinerary is a guide only. Our exact route and program will vary to take best advantage of local weather and ice conditions and opportunities to view wildlife. Changes will be made by the Captain and/or Expedition Leader to facilitate the best results from the prevailing conditions and they will try their best to reach the Polar Circle. However if ice conditions do not allow access the route might be changed. A daily program sheet will be issued on board. Flexibility is the key to success.

Wild Earth Travel

Small Ships, Big Adventures

wildearth-travel.com

info@wildearth-travel.com

YOUR SHIP: USHUAIA

YOUR SHIP:	Ushuaia
VESSEL TYPE:	Expedition
LENGTH:	84.73 metres
PASSENGER CAPACITY:	90
BUILT/REFURBISHED:	1970

The Ushuaia is a refurbished expedition vessel designed for immersive polar cruising, accommodating up to 90 passengers in 46 cabins and suites. Built in 1970 and ice-strengthened to Ice Class C, the ship combines proven capability with practical comfort for remote-region exploration. Multiple public spaces include a dining room, bar, lounge areas and a multimedia room, supporting briefings, social time and downtime between landings. A fleet of eight zodiacs enables efficient shore operations and wildlife encounters.

Cabin options range from shared-bath standard twins to spacious suites, all designed with function and rest in mind after active expedition days. Most cabins offer ocean views, private bathrooms, desks and essential amenities, with layouts suited to solo travellers, couples, families or small groups. With a maximum speed of 14 knots, a stable hull and an experienced crew, The Ushuaia prioritises access, safety and operational reliability over luxury excess, making it a focused platform for genuine expedition travel.



Wild Earth Travel

Small Ships, Big Adventures

0800 945 3327 (within New Zealand) | +64 (0) 3 365 1355 | **1800 107 715** (within Australia)

info@wildearth-travel.com | **wildearth-travel.com**

Wild Earth Travel

Small Ships, Big Adventures

wildearth-travel.com

info@wildearth-travel.com

INSIDE YOUR SHIP

Bridge Deck H

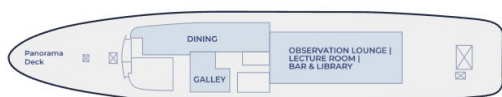


Upper Deck G



● Suites ● Superior Twin Private Cabins ● Premier Twin Private Cabin ● Premier Single Private Cabins
(View obscured by lifeboat)

Main Deck F



Deck E



● Standard Twin Shared Bathroom ● Standard Plus Twin Private Cabin ● Standard Plus Triple Private Cabin

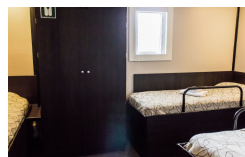
Premier Single



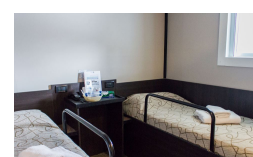
Premier Twin



Standard Plus Triple



Standard Plus Twin



Standard Twin



Suite Twin



Superior Twin





Wild Earth Travel

Small Ships, Big Adventures



wildearth-travel.com

info@wildearth-travel.com

PRICING

14-Feb-2026 to 25-Feb-2026

Standard Plus Triple	8990 USD pp
Standard Twin	9850 USD pp
Standard Plus Twin	11790 USD pp
Premier Twin	13980 USD pp
Superior Twin	14990 USD pp
Suite Twin	15990 USD pp
Premier Single	16760 USD pp

06-Feb-2027 to 17-Feb-2027

Standard Plus Triple	9390 USD pp
Standard Twin	10260 USD pp
Standard Plus Twin	11990 USD pp
Premier Twin	13990 USD pp
Superior Twin	15390 USD pp
Suite Twin	16450 USD pp
Premier Single	16760 USD pp



Wild Earth Travel

Small Ships, Big Adventures

0800 945 3327 (within New Zealand) | +64 (0) 3 365 1355 | **1800 107 715** (within Australia)

info@wildearth-travel.com | **wildearth-travel.com**