

Wild Earth Travel

Small Ships, Big Adventures

wildearth-travel.com

info@wildearth-travel.com

THE LONG WAY CRUISE: FROM BUENOS AIRES TO USHUAIA

The Long Arc to Antarctica luxury cruise starts in Argentina's vibrant capital, Buenos Aires, known as 'The Paris of South America.' From there, the journey ventures to the Falklands before reaching the awe-inspiring Antarctic Peninsula. This thrilling expedition concludes in Ushuaia, marking a captivating cruise through some of the world's most remote and striking landscapes. En route, explorers will visit a myriad of fascinating locations. Islands such as Saunders Island offer encounters with unique wildlife, including black-browed albatrosses and rockhopper penguins amid rugged beauty. Port Stanley in the Falklands echoes British charm, while South Georgia dazzles with its stunning king penguin colonies. The Antarctic Peninsula reveals magnificent glaciers and islands brimming with Adelie penguins. Throughout the "Long Arc to Antarctica luxury cruise", guests can dive into a wealth of activities. Sea days are perfect for relaxation, with observation decks offering panoramic ocean views. Engaging lectures and photography workshops enhance the voyage. The adventurous can embark on exhilarating kayaking expeditions amid Antarctic waters, making the journey even more memorable and immersive.



ITINERARY

Days 0 - 1 Pre Cruise Buenos Aires (Argentina)

Charter flights to the port of embarkation/ disembarkation (Longyearbyen, Ushuaia, Kangerlussuaq, Nuuk, Honiara, Jayapura and Sorong)
Group return transfers from airport to cruise port and to the hotel (where included)
One night pre-cruise accommodation with breakfast in a 4/5-star hotel (exemptions apply)

Argentina's cosmopolitan capital, often dubbed 'The Paris of South America,'

Wild Earth Travel

Small Ships, Big Adventures

0800 945 3327 (within New Zealand) | +64 (0) 3 365 1355 | 1800 107 715 (within Australia)

info@wildearth-travel.com | wildearth-travel.com



Wild Earth Travel

Small Ships, Big Adventures



wildearth-travel.com

info@wildearth-travel.com

is a city of diverse neighbourhoods (barrios) and vibrant cafe culture. Each district has its own character - none more so than colourful La Boca, where tango dancers perform in the streets. The handsome district of Recoleta is famous for the cemetery where Eva 'Evita' Peron is buried, while ships dock into the regenerated waterfront barrio Puerto Madero.

Days 2 - 4 Day at sea (At Sea)

Day 5 Saunders Island (Falkland Islands)

Black-browed albatross grace the skies over this remote Falkland Island, while Commerson's dolphins play in its waters. With a sparse population of people and sheep, the island is also a sanctuary for fur seals, rockhopper penguins, Magellanic penguins and imperial cormorants, nesting amid its cliffs and the impressive Cliff Mountain. Hiking through the moss-covered terrain unveils beautiful wildflowers like pink-petalled Felton's.

Day 6 Port Stanley (Falkland Islands)

Anyone familiar with Britain's trademark red post boxes might spot a resemblance in this British outpost. Port Stanley, on East Falkland, is the tiny capital of the Falkland Islands and is small enough to get around on foot. The Historic Dockyard Museum is devoted to maritime history and exploration. Magellanic penguins gather on the beach at nearby Gypsy Cove, and sea lions and dolphins frolic in the harbour.

Days 7 - 8 Day at sea (At Sea)

Days 9 - 10 South Georgia (South Georgia and the South Sandwich Islands)

Often called the 'Galapagos of the Poles,' South Georgia has a number of landing sites with tens of thousands of King Penguins and gentoo penguins, making up some of the largest populations in the world alongside harrumphing elephant seals. Among its remarkable sites is Grytviken, the historic whaling station where legendary British explorer Ernest Shackleton (1874-1922) is laid to rest.

Days 11 -12 Day at sea (At Sea)

Days 13 - 15 Antarctic Peninsula (Antarctica)

Among captivating glaciers, majestic icebergs and snowy islands, the Antarctic Peninsula is where most visitors to the White Continent live their Antarctica dream. It's the most accessible part, with scientific bases and incredible scenery, like the photogenic Lemaire Channel. Shore excursions might include Mikkelsen Harbour, where among gentoo penguins, snowy sheathbills and skuas, Antarctic Weddell seals haul out.

Days 16 - 17 Day at sea (At Sea)

Day 18 Ushuaia (Argentina)

Ushuaia is the gateway to the White Continent. Nestled in the foothills of the snow-capped Martial Range in Argentina's Patagonia region, Ushuaia's colourful streets and mismatched buildings cascade from the imposing mountains before coming to an abrupt halt at the shores of the Beagle Channel. Often described as 'the End of the World', the city carries the reputation well - the moody weather and dramatic surroundings certainly help.

Please note:

Itineraries are subject to change.

Wild Earth Travel

Small Ships, Big Adventures

0800 945 3327 (within New Zealand) | +64 (0) 3 365 1355 | 1800 107 715 (within Australia)

info@wildearth-travel.com | wildearth-travel.com

Wild Earth Travel

Small Ships, Big Adventures

wildearth-travel.com

info@wildearth-travel.com

YOUR SHIP: VEGA

| | |
|----------------------------|--|
| YOUR SHIP: | Vega |
| VESSEL TYPE: | Luxury Expedition / Cruise Ship |
| LENGTH: | 115 metres |
| PASSENGER CAPACITY: | 158 |
| BUILT/REFURBISHED: | 2020/2021/2022 |

The SH Vega is a boutique, ice-strengthened expedition ship designed for exploring the world's most remote destinations in refined comfort. Built in Finland's renowned Helsinki Shipyard, she combines sleek Scandinavian design with advanced cruising technology, including a Polar Class PC5 hull and extra-large stabilisers for smooth sailing in challenging waters. With space for just 158 guests and 122 crew, she offers an intimate and personalised experience, where every detail is considered - from elegant observation lounges and stargazing decks to fine dining venues and a spa with panoramic views. Her facilities include a heated outdoor pool, open deck jacuzzi, gym, and library, ensuring the journey is as rewarding on board as it is ashore.

Accommodation ranges from stylish oceanview staterooms to expansive premium suites, all appointed with contemporary comforts such as a flame-effect fireplace, Illy espresso machine, luxury toiletries, and even complimentary binoculars for wildlife spotting. Private balconies in many cabins provide a front-row seat to breathtaking landscapes, while world-class dining, attentive service, and thoughtful touches like a welcome bottle of Champagne enhance the sense of occasion. Whether

navigating polar ice or sailing into sunlit harbours, the SH Vega offers a blend of adventure, elegance, and home-like warmth.



like warmth.

Wild Earth Travel

Small Ships, Big Adventures

0800 945 3327 (within New Zealand) | +64 (0) 3 365 1355 | 1800 107 715 (within Australia)

info@wildearth-travel.com | wildearth-travel.com

Wild Earth Travel

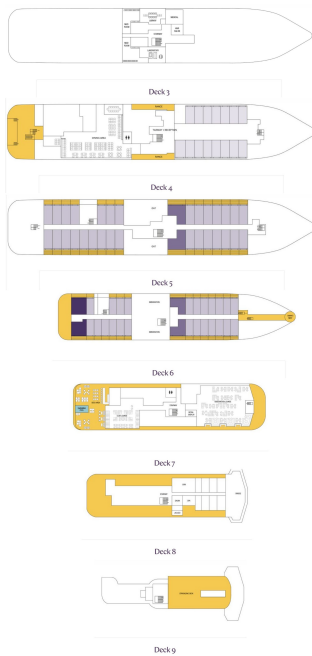
Small Ships, Big Adventures



wildearth-travel.com

info@wildearth-travel.com

INSIDE YOUR SHIP



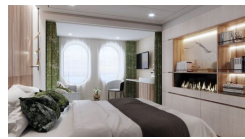
Balcony D5



Balcony M5



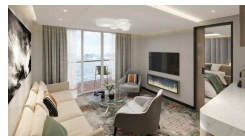
Oceanview D4



Oceanview M4



Premium Suite



Suite



Wild Earth Travel
Small Ships, Big Adventures

0800 945 3327 (within New Zealand) | +64 (0) 3 365 1355 | 1800 107 715 (within Australia)

info@wildearth-travel.com | wildearth-travel.com



Wild Earth Travel

Small Ships, Big Adventures



wildearth-travel.com

info@wildearth-travel.com

PRICING

07-Nov-2027 to 25-Nov-2027

| | |
|----------------------|---------------------|
| Oceanview D4 | 24100 AUD pp |
| Oceanview M4 | 25300 AUD pp |
| Balcony D5 | 26500 AUD pp |
| Balcony M5 | 27725 AUD pp |
| Suite | 42175 AUD pp |
| Premium Suite | 48200 AUD pp |



Wild Earth Travel

Small Ships, Big Adventures

0800 945 3327 (within New Zealand) | +64 (0) 3 365 1355 | **1800 107 715** (within Australia)

info@wildearth-travel.com | wildearth-travel.com