



# Wild Earth Travel

*Small Ships, Big Adventures*



[wildearth-travel.com](http://wildearth-travel.com)

[info@wildearth-travel.com](mailto:info@wildearth-travel.com)

## THE GREAT AUSTRAL LOOP - ANTARCTICA, SOUTH GEORGIA & FALKLANDS LUXURY EXPEDITION

Explore the Southern Ocean, the kingdom of great expeditions and home to the most extraordinary adventures, during an expedition cruise to the highest latitudes, from the Falkland Islands to South Georgia and the immaculate lands of Antarctica.

During this odyssey, where wild nature reigns supreme, you will discover, escorted by sei whales, the breathtaking landscapes of the Falkland Islands, featuring white sandy beaches, jagged cliffs and windswept moors. Then the mountainous South Georgia will guide you in the footsteps of Sir Ernest Shackleton, into the heart of its glaciers shaped by time, where king penguins, elephant seals and fur seals populate the beaches of black sand. The inaccessible White Continent finally reveals itself, draping icebergs, glaciers, mountains and icy seas in thousands of shades of white. In this universe of silence and light, Adelie, Gentoo and Chinstrap penguins, seals, whales and seabirds will become your companions on this unforgettable journey imbued with adventure and dreaminess.

Wild Earth Travel

*Small Ships, Big Adventures*

0800 945 3327 (within New Zealand) | +64 (0) 3 365 1355 | 1800 107 715 (within Australia)

[info@wildearth-travel.com](mailto:info@wildearth-travel.com) | [wildearth-travel.com](http://wildearth-travel.com)

# Wild Earth Travel

*Small Ships, Big Adventures*



[wildearth-travel.com](http://wildearth-travel.com)

[info@wildearth-travel.com](mailto:info@wildearth-travel.com)



be an opportunity to enjoy the conferences or shows proposed on board, to do some shopping in the boutique or to meet the PONANT photographers in their dedicated space. As for lovers of the open sea, they will be able to visit the ship's upper deck to admire the spectacle of the waves and perhaps be lucky enough to observe marine species. A truly enchanted interlude, combining comfort, rest and entertainment.

## Day 3 NEW ISLAND & GRAVE COVE

This island with its distinctive jagged relief is located on the western edge of the Falkland Islands and is home to a tiny village of two families. Step onto the golden sand of its flower-lined beaches, beside which an old stone house still stands, and you'll feel like you've entered a natural paradise. A narrow pathway weaves around typical Falkland moorlands. Follow it and in under 20 minutes you'll find yourself at the heart of a colony of southern rockhopper penguins, black-browed albatross and imperial shags. It's the perfect opportunity to watch the albatross swoop down from the cliffs and skim the waves that crash against the rocks on the exposed side of the island. Make your way through the turbulent Woolly Gut strait and emerge in the stillness of Grave Cove. Located in the northern edge of the Falkland Islands, this bay owes its name to the vestiges of whalers' graves that overlook the beach. As you step off the boat and onto the white-sand beach, you might find yourself escorted by a few hospitable Commerson's dolphins, elegantly adorned in black and white. A stroll along the grassy dunes will lead you to a vast plain of lush green grass, tended by a few sheep. On the other side of the island you'll find one of the largest gentoo penguin colonies in the area. With some luck, you'll also glimpse a sea lion scouring the waves for his next meal.

## Days 4 - 5 AT SEA

During your day at sea, make the most of the many services and activities on board. Treat yourself to a moment of relaxation in the spa or stay in shape in the fitness centre. Depending on the season, let yourself be tempted by the swimming pool or a spot of sunbathing. This day without a port of call will also be an opportunity to enjoy the conferences or shows proposed on board, to do some shopping in the boutique or to meet the PONANT photographers in their dedicated space. As for lovers of the open sea, they will be able to visit the ship's upper deck to admire the spectacle of the waves and perhaps be lucky enough to observe marine species. A truly enchanted interlude, combining comfort, rest and entertainment.

## ITINERARY

### Days 0 - 1 Pre Cruise & USHUAIA

Capital of Argentina's Tierra del Fuego province, Ushuaia is considered the gateway to the White Continent and the South Pole. Nicknamed "El fin del mundo" by the Argentinian people, this city at the end of the world nestles in the shelter of mountains surrounded by fertile plains that the wildlife seem to have chosen as the ultimate sanctuary. With its exceptional site, where the Andes plunge straight into the sea, Ushuaia is one of the most fascinating places on earth, its very name evocative of journeys to the unlikely and the inaccessible...

### Day 2 AT SEA

During your day at sea, make the most of the many services and activities on board. Treat yourself to a moment of relaxation in the spa or stay in shape in the fitness centre. Depending on the season, let yourself be tempted by the swimming pool or a spot of sunbathing. This day without a port of call will also

Wild Earth Travel

*Small Ships, Big Adventures*

0800 945 3327 (within New Zealand) | +64 (0) 3 365 1355 | 1800 107 715 (within Australia)

[info@wildearth-travel.com](mailto:info@wildearth-travel.com) | [wildearth-travel.com](http://wildearth-travel.com)



# Wild Earth Travel

*Small Ships, Big Adventures*

[wildearth-travel.com](http://wildearth-travel.com)

[info@wildearth-travel.com](mailto:info@wildearth-travel.com)

## Days 6 - 8 SOUTH GEORGIA

Aboard your ship, discover South Georgia, a region formed by an underwater mountain chain that extends from the Andes to the Antarctic Peninsula. All the wildlife of the Far South can be found there: king and Gentoo penguins, elephant seals, fur seals... You might get the chance to discover the majestic glaciers of Gold Harbour and the vast plains of Fortuna Bay. If you are fortunate enough to land at Salisbury Plain, you can expect a wonderful spectacle: more than 300,000 king penguins, which you will recognise by the bright orange mark on their head and neck, have taken up residence there.

## Days 9 - 10 AT SEA

During your day at sea, make the most of the many services and activities on board. Treat yourself to a moment of relaxation in the spa or stay in shape in the fitness centre. Depending on the season, let yourself be tempted by the swimming pool or a spot of sunbathing. This day without a port of call will also be an opportunity to enjoy the conferences or shows proposed on board, to do some shopping in the boutique or to meet the PONANT photographers in their dedicated space. As for lovers of the open sea, they will be able to visit the ship's upper deck to admire the spectacle of the waves and perhaps be lucky enough to observe marine species. A truly enchanted interlude, combining comfort, rest and entertainment.

## Days 11 - 14 ANTARCTIC PENINSULA

Succumb to the magic of a place unlike any other. To this day, the mythical Antarctic Peninsula still holds real fascination and promises its visitors unforgettable moments. Throughout your adventure in this icy realm, you will find yourself in the heart of a spectacular decor in subtle shades of blue and white, surrounded by exceptional wildlife. Penguins, humpback whales, seals and giant petrels are at home here, as are elephant seals, fur seals, Antarctic minke whales, and orcas. Depending on which sites you will be lucky enough to visit, you may get the chance to observe them and share with them the beauty of these extreme parts. Each day, based on ice conditions, the Captain and the Expedition Leader will suggest Zodiac® outings or landings to discover the infinite riches of the Antarctic Peninsula. Glaciers, ice floe, tabletop icebergs, mountain peaks that plunge straight into the sea, volcanic beaches, research stations, enchanting bays, and vestiges of the whaling industry: these are the faces of the Antarctic that will likely reveal themselves to you, in a

hushed and surreal atmosphere. You will sail in the wake of Jean-Baptiste Charcot, Adrien de Gerlache and Sir Ernest Shackleton, great Antarctic explorers who, from the 19th century, set out to conquer these remote and uninhabited lands.

## Days 15 - 16 CROSSING THE DRAKE PASSAGE

If there is one place, one sea, one waterway dreaded by tourists, researchers and hardened seafarers alike, it is undoubtedly Drake Passage. Situated at the latitude of the infamous Furious Fifties winds, between Cape Horn and the South Shetland Islands, it is the shortest route to connect Antarctica to South America. Seasoned navigators will tell you that you must earn your visit to the White Continent! As the Antarctic convergence zone where cold currents rising up from the South Pole meet warmer equatorial water masses, Drake Passage harbours a very diverse marine fauna. Don't forget to look to the sky to catch a glimpse of elegant albatross and Cape petrels, playfully floating about in the wind around your ship.

## Days 17 - 18 USHUAIA

Capital of Argentina's Tierra del Fuego province, Ushuaia is considered the gateway to the White Continent and the South Pole. Nicknamed "El fin del mundo" by the Argentinian people, this city at the end of the world nestles in the shelter of mountains surrounded by fertile plains that the wildlife seem to have chosen as the ultimate sanctuary. With its exceptional site, where the Andes plunge straight into the sea, Ushuaia is one of the most fascinating places on earth, its very name evocative of journeys to the unlikely and the inaccessible...

### Please Note:

We are privileged guests in these extreme lands where we are at the mercy of weather and ice conditions. Landings on certain sites and the observation of certain wildlife cannot be guaranteed. They vary from day to day, making each PONANT cruise a unique experience. The Captain and the Expedition Leader will make every effort to ensure that your experience is as rich as possible, while complying with the safety rules and instructions imposed by the IAATO.



Wild Earth Travel

*Small Ships, Big Adventures*

0800 945 3327 (within New Zealand) | +64 (0) 3 365 1355 | 1800 107 715 (within Australia)

[info@wildearth-travel.com](mailto:info@wildearth-travel.com) | [wildearth-travel.com](http://wildearth-travel.com)

# Wild Earth Travel

*Small Ships, Big Adventures*



[wildearth-travel.com](http://wildearth-travel.com)

[info@wildearth-travel.com](mailto:info@wildearth-travel.com)

## YOUR SHIP: LE BOREAL

<b>YOUR SHIP:</b>	<b>Le Boreal</b>
<b>VESSEL TYPE:</b>	<b>Luxury Expedition / Cruise Ship</b>
<b>LENGTH:</b>	<b>142 meters</b>
	<b>264 (in twin cabins, 200 in Antarctica)</b>
<b>PASSENGER CAPACITY:</b>	<b>Antarctica)</b>
<b>BUILT/REFURBISHED:</b>	<b>2011</b>

Le Boreal, along with her sisterships L'Austral, Le Soleal, and Le Lyrial, embodies PONANT's signature blend of luxury, intimacy, and serene well-being. Designed with both conviviality and tranquillity in mind, she offers inviting shared spaces alongside peaceful retreats for moments of quiet escape. Her sleek exterior and refined interiors reflect the careful thought and craftsmanship that define the fleet, with a decor that captures the spirit of a private yacht. Featuring 132 staterooms and suites, she welcomes up to 264 guests in an atmosphere that feels both elegant and personal.

Built in 2010 by Fincantieri in Ancona, Italy, Le Boreal measures 466 ft in length, with a beam of 59 ft, an ice-class 1C hull, and eco-design innovations continually updated to improve her environmental performance. With six passenger decks, 11 Zodiacs for exploration, and attentive French-flag service, she is equally at home navigating icy polar waters or warm, sunlit coasts. Life on board combines refined gastronomy, engaging social activities, and immersive excursions, creating a travel experience where elegance meets adventure.



Wild Earth Travel

*Small Ships, Big Adventures*

0800 945 3327 (within New Zealand) | +64 (0) 3 365 1355 | 1800 107 715 (within Australia)

[info@wildearth-travel.com](mailto:info@wildearth-travel.com) | [wildearth-travel.com](http://wildearth-travel.com)

# Wild Earth Travel

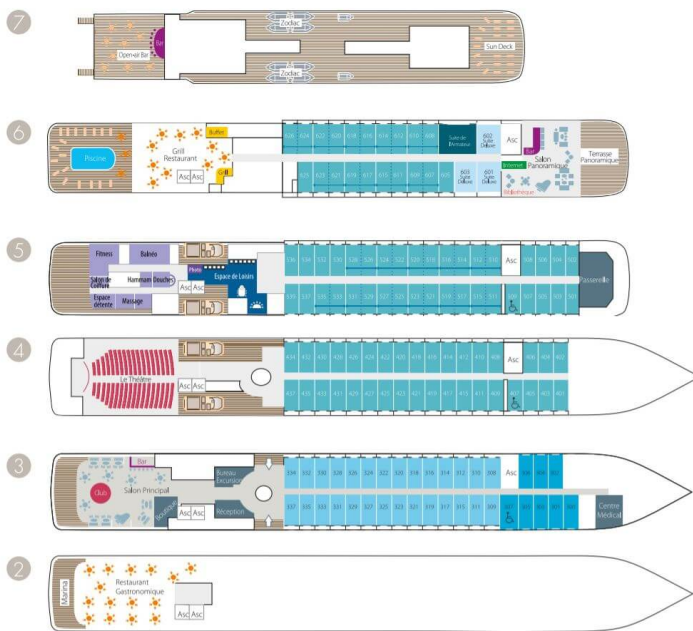
*Small Ships, Big Adventures*



[wildearth-travel.com](http://wildearth-travel.com)

[info@wildearth-travel.com](mailto:info@wildearth-travel.com)

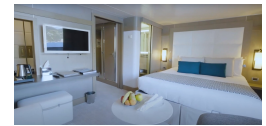
## INSIDE YOUR SHIP



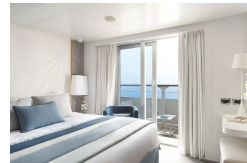
Deluxe Stateroom



Deluxe Suite



Grand Deluxe Suite



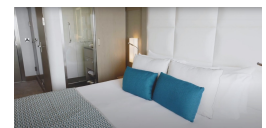
Grand Privilege Suite



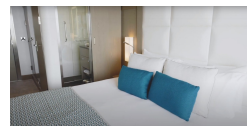
Owner's Suite



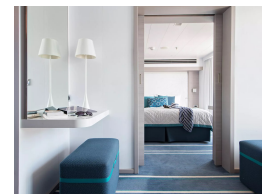
Prestige Deck 4



Prestige Deck 5



Prestige Deck 5 Suite



Wild Earth Travel

*Small Ships, Big Adventures*

0800 945 3327 (within New Zealand) | +64 (0) 3 365 1355 | 1800 107 715 (within Australia)

[info@wildearth-travel.com](mailto:info@wildearth-travel.com) | [wildearth-travel.com](http://wildearth-travel.com)

# Wild Earth Travel

*Small Ships, Big Adventures*

[wildearth-travel.com](http://wildearth-travel.com)

[info@wildearth-travel.com](mailto:info@wildearth-travel.com)

## PRICING

### 16-Nov-2026 to 04-Dec-2026

Superior Stateroom	32950 AUD pp
Deluxe Stateroom	35300 AUD pp
Prestige Deck 4	36960 AUD pp
Prestige Deck 5	37640 AUD pp
Prestige Deck 6	38630 AUD pp
Deluxe Suite	55350 AUD pp
Prestige Deck 5 Suite	57680 AUD pp
Privilège Suite	62690 AUD pp
Grand Deluxe Suite	76740 AUD pp
Grand Privilege Suite	79080 AUD pp
Owner's Suite	81410 AUD pp

Superior Stateroom	33930 AUD pp
Deluxe Stateroom	36330 AUD pp
Prestige Deck 4	38060 AUD pp
Prestige Deck 5	38750 AUD pp
Prestige Deck 6	39770 AUD pp
Deluxe Suite	56970 AUD pp
Prestige Deck 5 Suite	59370 AUD pp
Prestige Deck 6 Suite	62470 AUD pp
Owner's Suite	87200 AUD pp

### 03-Dec-2026 to 21-Dec-2026

Superior Stateroom	31540 AUD pp
Deluxe Stateroom	33780 AUD pp
Prestige Deck 4	35350 AUD pp
Prestige Deck 5	36000 AUD pp
Prestige Deck 6	36940 AUD pp
Deluxe Suite	52820 AUD pp
Prestige Deck 5 Suite	55040 AUD pp
Privilège Suite	59800 AUD pp
Grand Deluxe Suite	73140 AUD pp
Grand Privilege Suite	75370 AUD pp
Owner's Suite	81410 AUD pp

### 19-Dec-2026 to 06-Jan-2027

Wild Earth Travel  
*Small Ships, Big Adventures*

0800 945 3327 (within New Zealand) | +64 (0) 3 365 1355 | 1800 107 715 (within Australia)

[info@wildearth-travel.com](mailto:info@wildearth-travel.com) | [wildearth-travel.com](http://wildearth-travel.com)

# Wild Earth Travel

*Small Ships, Big Adventures*

[wildearth-travel.com](http://wildearth-travel.com)

[info@wildearth-travel.com](mailto:info@wildearth-travel.com)

## PRICING

### 14-Feb-2027 to 04-Mar-2027

Superior Stateroom	32950 AUD pp
Deluxe Stateroom	35300 AUD pp
Prestige Deck 4	36960 AUD pp
Prestige Deck 5	37640 AUD pp
Prestige Deck 6	38630 AUD pp
Deluxe Suite	55350 AUD pp
Prestige Deck 5 Suite	57680 AUD pp
Prestige Deck 6 Suite	60690 AUD pp
Owner's Suite	76740 AUD pp

Superior Stateroom	33290 AUD pp
Deluxe Stateroom	35630 AUD pp
Prestige Stateroom Deck 4	37290 AUD pp
Prestige Stateroom Deck 5	37950 AUD pp
Prestige Stateroom Deck 6	38960 AUD pp
Deluxe Suite	55630 AUD pp
Prestige Suite Deck 5	57960 AUD pp
Prestige Suite Deck 6	60970 AUD pp
Owner's Suite	80750 AUD pp

### 16-Dec-2027 to 03-Jan-2028

Superior Stateroom	28860 AUD pp
Deluxe Stateroom	30830 AUD pp
Prestige Stateroom Deck 4	32230 AUD pp
Prestige Stateroom Deck 5	32790 AUD pp
Prestige Stateroom Deck 6	33640 AUD pp
Deluxe Suite	47680 AUD pp
Prestige Suite	49640 AUD pp
Privilege Suite	53850 AUD pp
Grand Deluxe Suite	65650 AUD pp
Grand Privilege Suite	67610 AUD pp
Owner's Suite	85670 AUD pp

### 27-Jan-2028 to 14-Feb-2028

Wild Earth Travel  
*Small Ships, Big Adventures*

0800 945 3327 (within New Zealand) | +64 (0) 3 365 1355 | 1800 107 715 (within Australia)

[info@wildearth-travel.com](mailto:info@wildearth-travel.com) | [wildearth-travel.com](http://wildearth-travel.com)

# Wild Earth Travel

*Small Ships, Big Adventures*



[wildearth-travel.com](http://wildearth-travel.com)

[info@wildearth-travel.com](mailto:info@wildearth-travel.com)

## PRICING

23-Feb-2028 to 12-Mar-2028

Superior Stateroom	28860 AUD pp
Deluxe Stateroom	30830 AUD pp
Prestige Stateroom Deck 4	32230 AUD pp
Prestige Stateroom Deck 5	32790 AUD pp
Prestige Stateroom Deck 6	33640 AUD pp
Deluxe Suite	47680 AUD pp
Prestige Suite Deck 5	49640 AUD pp
Prestige Suite Deck 6	52170 AUD pp
Owner's Suite	80750 AUD pp

**ADDITIONAL CHARGES:** Port Taxes & Fees 1260 AUD pp

Wild Earth Travel

*Small Ships, Big Adventures*

0800 945 3327 (within New Zealand) | +64 (0) 3 365 1355 | 1800 107 715 (within Australia)

[info@wildearth-travel.com](mailto:info@wildearth-travel.com) | [wildearth-travel.com](http://wildearth-travel.com)



# Wild Earth Travel

*Small Ships, Big Adventures*



[wildearth-travel.com](http://wildearth-travel.com)

[info@wildearth-travel.com](mailto:info@wildearth-travel.com)

## SPECIAL OFFERS

Online prices reflect the current brochure fare savings of up to 30%. Prices may change based on demand. Terms and conditions apply. This special offer is subject to availability. Please contact us for more details.



Wild Earth Travel

*Small Ships, Big Adventures*

0800 945 3327 (within New Zealand) | +64 (0) 3 365 1355 | 1800 107 715 (within Australia)

[info@wildearth-travel.com](mailto:info@wildearth-travel.com) | [wildearth-travel.com](http://wildearth-travel.com)