

Wild Earth Travel

Small Ships, Big Adventures

wildearth-travel.com

info@wildearth-travel.com

FALKLANDS, SOUTH GEORGIA AND ANTARCTICA - 22 DAY EXPEDITION

Challenge. Desolation. Unlimited wonder. It's not difficult to grasp what attracted the great explorers to Antarctica. Get a personal appreciation for the struggle to tame the bottom of the world on this 22-day adventure to the land that entranced Ernest Shackleton and countless others since. Down here, you'll explore the Falkland Islands, encounter abandoned whaling stations on South Georgia Island, and pay your respects at Shackleton's grave. Elsewhere, you'll catch up with penguins (king, chinstrap, and gentoo varieties) and learn all about them through daily lectures, get close to whales and cavorting seals from a Zodiac boat, and keep an eye peeled for towering icebergs and massive glaciers. Prepare to be astonished.



ITINERARY

Day 1 Arrive Montevideo

Arrive in Montevideo at any time. Arrival transfer included. Enjoy the sights and sounds of Uruguay's capital city. Overnight at the group hotel.

Day 2 Montevideo/South Atlantic Ocean

Today we embark on the M/S Expedition. The group will leave the hotel

Wild Earth Travel

Small Ships, Big Adventures

0800 945 3327 (within New Zealand) | +64 (0) 3 365 1355 | 1800 107 715 (within Australia)

info@wildearth-travel.com | wildearth-travel.com

Wild Earth Travel

Small Ships, Big Adventures

wildearth-travel.com

info@wildearth-travel.com

together in the early afternoon. The morning is free for you to do any last minute shopping or visit one of Montevideo's colorful neighbourhoods. The evening is spent onboard the ship sailing southwards towards the Falkland Islands. Please note while it is our intention to adhere to the itinerary described below, there is a certain amount of flexibility built into the itinerary and on occasion it may be necessary, or desirable to make alterations. On the first day on board, your Expedition Leader will give you an expedition overview.

Days 3–5 South Atlantic Ocean/Falkland Islands (Islas Malvinas)

With course set southeast, become acquainted with the ship. Enjoy the lecture and educational sessions about the extraordinary human and natural history of the Antarctic region. Spend time on deck to spot wildlife including albatross and possibly whales and dolphins. Relax in the library, grab a drink in the Polar Bear Pub, or make some new friends in the Discovery Lounge.

Days 6–7 Falkland Islands (Islas Malvinas)/Southern Ocean

The Falkland Islands provide a rare opportunity to witness the biological diversity and extraordinary scenery of the southern islands. Nesting Albatross and penguins are abundant. Port Stanley provides an opportunity to meet the hardy local inhabitants whose colourful houses provide contrast to the long dark winters.

Days 8–9 Southern Ocean/South Georgia

With course set for South Georgia, days at sea are filled with lectures to prepare for landings. Look out for the many whales that inhabit these waters. Our lecture series resumes to prepare us for South Georgia, spend plenty of time on deck to identify the abundant sea birds of the South Ocean.

Days 10–13 South Georgia/Scotia Sea

Home to many interesting sites (including the grave of polar explorer Ernest Shackleton), South Georgia has several former whaling stations and boasts plenty of wildlife. Visit a huge colony of king penguins, a major highlight of this part of the journey. Weather permitting, enjoy 3-4 days free to explore this

island. South Georgia Island is home to many marvels including Shackleton's grave, former whaling stations, incredible scenery and prolific wildlife. Weather permitting spend 3-4 full days and opt to explore this island. A huge colony of king penguins is the highlight of this part of the journey. On nearby islands look out for the wandering albatross in their nesting grounds.

Days 14–15 Scotia Sea/South Shetland Islands

Plotting a southwesterly course across the Scotia Sea, sail for two days, retracing Shackleton's route backwards. Plotting a southwesterly course across the Scotia Sea, sail for two days the legendary Elephant Island in the South Shetland Islands. The waters are rich with nutrients and the long summer days provide the ingredient that is missing most of the year. The result is a complex food chain topped by several species of whales, seals, and seabirds.

Days 16–19 South Shetland Islands/Drake Passage

Experience some of the most unique wildlife and awe-inspiring scenery in the South Shetland Islands, just north of the Antarctic Peninsula. Attempt two shore landings per day (weather permitting), and encounter gentoo, chinstrap, and Adelie penguin rookeries; Weddell, crabeater, and leopard seals; and orca, humpback, and minke whales in the cold Antarctic waters. The peninsula also has a remarkable human history; during the voyage we will learn about some of the most important and dramatic expeditions to this remote corner of the world.

Days 20–21 Drake Passage/Ushuaia

Reflect on a memorable adventure and take in some final lectures on route back to Ushuaia. Keep a careful look out for a last chance to spot whales. Turning north, embark upon the 400 mile crossing of the passage that bears the name of the 16th century English explorer Sir Francis Drake. The G Expedition is at home in this part of the Southern Ocean, known for the unimpeded never ending fetch of the winds that encircle the Antarctic. At some point on the first day, cross the Antarctic Convergence, a meeting of cold polar water flowing north and warmer sub-antarctic water moving in the opposite direction. It is the largest biological barrier on earth and is marked by a change in temperature, salinity and nutrient levels. The north flowing Antarctic waters predominantly sink beneath southward moving sub-antarctic waters. While further south associated areas of mixing and upwelling create an ocean very

Wild Earth Travel

Small Ships, Big Adventures

0800 945 3327 (within New Zealand) | +64 (0) 3 365 1355 | 1800 107 715 (within Australia)

info@wildearth-travel.com | wildearth-travel.com



Wild Earth Travel

Small Ships, Big Adventures



wildearth-travel.com

info@wildearth-travel.com

high in marine productivity. Wandering, Black-browed and Light-mantled Sooty Albatross, Prion's and Cap Petrels are among some of the species of seabirds that may join the Expedition on the journey towards the South American continent.

Day 22 Ushuaia

Disembark in the morning. Our adventure comes to a close. Have a final breakfast on the expedition ship before saying our goodbyes as we disembark in Ushuaia in the morning. Fly out of Ushuaia anytime from noon onwards.

Please Note:

While it is our intention to adhere to the route described below, there is a certain amount of flexibility built into the itinerary and on occasion it may be necessary, or desirable to make alterations. The itinerary is brief, as we never know exactly where our journey will take us. Due to our style of travel and the regions we visit, travel can be unpredictable.

Wild Earth Travel

Small Ships, Big Adventures

0800 945 3327 (within New Zealand) | +64 (0) 3 365 1355 | 1800 107 715 (within Australia)

info@wildearth-travel.com | wildearth-travel.com

Wild Earth Travel

Small Ships, Big Adventures

wildearth-travel.com

info@wildearth-travel.com

YOUR SHIP: EXPEDITION

YOUR SHIP:	Expedition
VESSEL TYPE:	Expedition
LENGTH:	102 metres (331 feet)
PASSENGER CAPACITY:	128
BUILT/REFURBISHED:	1976/2017

With just 128 passengers and a 10:1 guest-to-expert ratio, Polar cruising with G is designed for real exploration rather than passive sightseeing. Small ship size allows for daily landings when conditions permit, getting guests off the ship and into polar landscapes more often than larger vessels can manage. Expert-led excursions are a core part of the experience, with historians, biologists, geologists, and wildlife specialists providing context and depth to every landing, glacier, and wildlife encounter.

The expedition experience focuses on substance, value, and community. Zodiac excursions, expert talks, gear use, and warm, informal hospitality are included, prioritising time on land over luxury extras. The newly refurbished Expedition ship, launching for the 2025/2026 season, blends proven polar capability with upgraded cabins, ensuite bathrooms, refreshed common areas, and modernised engines. A relaxed, small-group atmosphere fosters strong connections between guests, crew, and experts, creating a shared sense of purpose and one of the most memorable aspects of the journey.



Wild Earth Travel

Small Ships, Big Adventures

0800 945 3327 (within New Zealand) | +64 (0) 3 365 1355 | **1800 107 715** (within Australia)

info@wildearth-travel.com | wildearth-travel.com

Wild Earth Travel

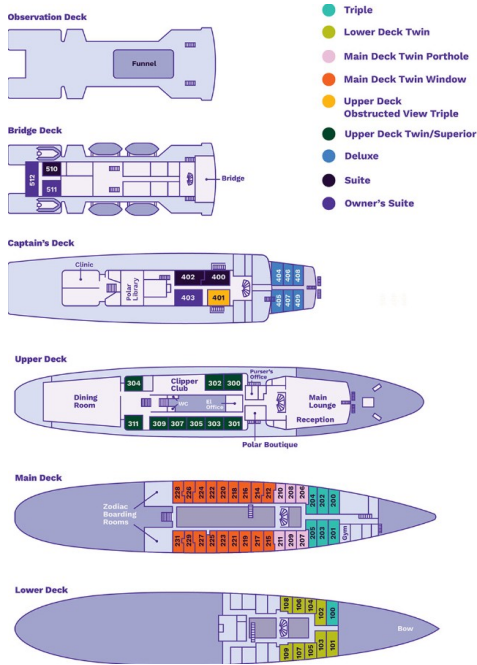
Small Ships, Big Adventures



wildeath-travel.com

info@wildeath-travel.com

INSIDE YOUR SHIP



Deluxe



Lower Deck Twin



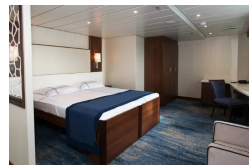
Main Deck Twin Porthole



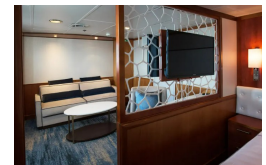
Main Deck Twin Window



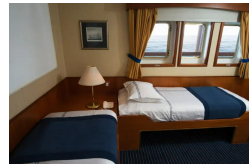
Owners Suite



Suite



Superior



Triple



Wild Earth Travel

Small Ships, Big Adventures



wildearth-travel.com

info@wildearth-travel.com

PRICING

22-Oct-2026 to 12-Nov-2026

Triple	28799 NZD pp
Lower Deck Twin	32999 NZD pp
Main Deck Twin Porthole	34699 NZD pp
Main Deck Twin Window	36399 NZD pp
Superior	36999 NZD pp
Deluxe	39299 NZD pp
Suite	41299 NZD pp
Owners Suite	42499 NZD pp

Optional extras & upgrades

Kayaking

Weather permitting, you will head out in kayaks during the days where zodiac landings are also available. Kayaking as part of a group lead by experienced and skilled leaders, is an opportunity to experience these remote regions from another vantage point. No other activity gets you as close to the natural environment!

Optional tours and excursions are available, please contact us for more details.

Wild Earth Travel

Small Ships, Big Adventures

0800 945 3327 (within New Zealand) | +64 (0) 3 365 1355 | 1800 107 715 (within Australia)

info@wildearth-travel.com | wildearth-travel.com