



Wild Earth Travel

Small Ships, Big Adventures



wildearth-travel.com

info@wildearth-travel.com

EXPEDITION SEMI-CIRCUMNAVIGATION OF ANTARCTICA: ONE OF THE GREATEST FEATS OF OUR TIME

Glittering icebergs, mighty glacier panoramas - where other ships have to give up, the adventure is only just beginning for you. The semi-circumnavigation of Antarctica is something very special for those in search of an unforgettable, historic expedition.



Wild Earth Travel

Small Ships, Big Adventures

0800 945 3327 (within New Zealand) | +64 (0) 3 365 1355 | 1800 107 715 (within Australia)

info@wildearth-travel.com | wildearth-travel.com

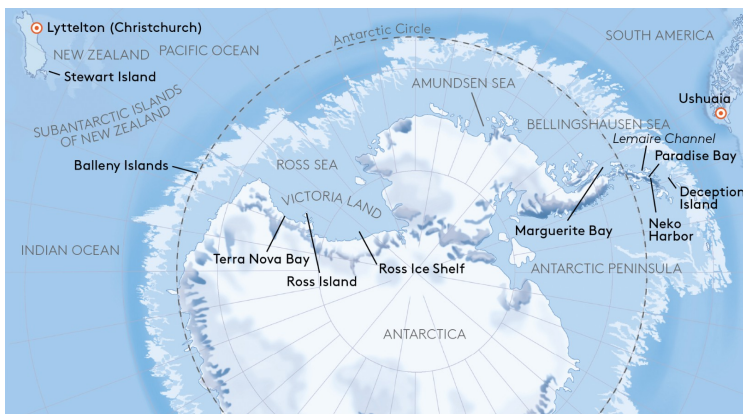
Wild Earth Travel

Small Ships, Big Adventures



wildearth-travel.com

info@wildearth-travel.com



ITINERARY

Mon, 01.02.2027 Charter flight from Buenos Aires to Ushuaia

Ushuaia/Argentina, departure 18.00 hrs

Tue, 02.02.2027 Sailing through the Drake Passage

Wed, 03.02.2027 - Mon, 08.02.2027 South Shetland Islands , Antarctic Peninsula , crossing the Antarctic Circle, Marguerite Bay

The South Shetland Islands form a long chain in the ocean. The island group opens up exciting chapters of Antarctic exploration and provides expert insights into geology. Here, your small manoeuvrable ship can again prove its expedition capability when it sails into the flooded caldera of the extinct volcano that forms Deception Island. Flanked by rock faces up to 50 m (164 ft) in height, the black sand in front of you gives off steam as a testament to a past eruption - and you in the heart of the scenery. You, too, will be enchanted by the scenery: jagged crags loom fiercely on the horizon and the evening sun casts a delicate pink glow over the snowfields.

The Antarctic Peninsula, part of the coldest continent on Earth, may seem inhospitable at first glance, but it is actually a paradise for countless animal species that have adapted perfectly. Enjoy unforgettable moments when, for

example, you set foot on the Antarctic mainland near to Paradise Bay. Snow-covered peaks, imposing icebergs and towering glaciers surround you. Unbelievable views also await you in the bay of Neko Harbor with its rocky massifs. The monumental dimensions are emphasised by Petermann Island: the rocky and partly glaciated land mass is located at the southern end of the narrow Lemaire Channel lined with high cliffs. Mountains up to 1,000 m (3,280 ft) high line the strait of water, which is regarded as one of the most impressive shipping passages in the world. The Neumayer Channel provides panoramic views of glaciers that are no less breathtaking. This experience is accompanied by the cries of countless Dominican gulls, Cape petrels and snow petrels.

As the ship heads south, the endless white seems increasingly rough and icy. The excitement on board mounts as you approach the crossing of the Antarctic Circle - a unique feeling of pioneering adventure. How far can the ship advance? Thick ice fields and icebergs are a common sight here and the glaciers seem more dominant. In this challenging region, the experience and flexibility of the captain and crew are needed more than ever.

With the highest ice class for passenger ships, the ship can forge its way to the most beautiful and rarely visited regions such as Marguerite Bay. A steep mountain panorama, possibly covered in fresh snow, as well as vast snowfields and glaciers spread out before you. On Zodiac rides and hikes with your experts, you will gain insights into a world of ice that few have experienced. Simply magical.

Tue, 09.02.2027 - Wed, 17.02.2027 Relaxation at sea

(cruise through Bellingshausen Sea, Amundsen Sea and Ross Sea - 17.02 will be lost due to crossing the International Date Line)

The next few days in the southernmost regions of the world will be devoted to the golden age of Antarctic exploration. This is not a route from A to B - it is a way to rediscover Antarctica in the tradition of legendary explorers. Your cruise will be enriched by knowledge gained from the multimedia Ocean Academy and from the specialist literature in the extensive on-board library. Simply incredible - the Bellingshausen Sea covers an area of several hundred square kilometres and is around 4,000 m (13,123 ft) deep. Allow this wide open expanse to inspire you to deep relaxation: whether in the OCEAN SPA or with exceptional culinary creations by our top chefs. In the Amundsen Sea, the life story of polar explorer Roald Amundsen will be brought to life when expert presentations on board provide you with interesting insights into the pioneering feats of many legendary explorers. Many years ago, they took to the

Wild Earth Travel
Small Ships, Big Adventures

0800 945 3327 (within New Zealand) | +64 (0) 3 365 1355 | 1800 107 715 (within Australia)

info@wildearth-travel.com | wildearth-travel.com

Wild Earth Travel

Small Ships, Big Adventures

wildearth-travel.com

info@wildearth-travel.com

seas to travel to this remote region without modern technology, putting their lives on the line - and they may well have been just as impressed as you are by similar views. You will feel like you are part of the natural surroundings on the Observation Deck with various observation levels, as well as in the Observation Lounge, thanks to the 180-degree view through the floor-to-ceiling windows. The excitement builds on board: what are the ice conditions on the Ross Sea? How will the natural surroundings look? Can the captain push through the pack ice and drifting ice to reach seldom-visited regions? If all goes to plan, you will experience unforgettable and moving moments.

Thu, 18.02.2027 - Tue, 23.02.2027 Ross Island , Terra Nova Bay , Victoria Land

The season is ideal, the timing perfect - your ship will attempt to make its way through the pack ice and drifting ice to get to Ross Island. You can expect to see whales and emperor penguins in this region. If the weather and ice conditions allow us to land, you will be able to visit legendary places such as Cape Royds: the spot where Sir Ernest Shackleton set up a base camp for his South Pole expedition in 1908 is now home to penguins. Cape Evans, by contrast, set the scene for the Terra Nova expedition led by Robert Falcon Scott, who attempted to beat Roald Amundsen to the South Pole. Find out more about today's research in the area at the American McMurdo Station, the largest research station in the Antarctic (subject to authorisation). In the shadow of the modern building and the mighty Mount Erebus stands the Discovery hut built by Scott in 1902.

Terra Nova Bay was named after the ship that Scott was sailing in when he discovered the bay in 1901. It is now home to an Italian research station. On his expedition, Scott came across the enormous Drygalski Ice Tongue: at between 14 and 24 km (8.7 to 14.9 miles) wide and around 50 km (31 miles) long, this wall of ice will seem particularly impressive from the Zodiacs. Will the coast in this area be surrounded by thick pack ice? If a landing with the Zodiacs is possible, you will be able to walk through this mystical landscape with your experts. You might also come across penguins, which will be just as curious as you are.

As you cruise in front of the fantastic backdrop of the Ross Ice Shelf, you will experience another indescribable highlight: the gigantic wall of ice as tall as houses stretches for hundreds of kilometres. Victoria Land, on the other hand, welcomes you with an endless expanse. At Cape Adare, you will find the ruins of a hut that Borchgrevink built in 1899 and in which an expedition team spent a winter in Antarctica for the first time. The spectacular wildlife here is just as moving as the region's past - including the largest colony of Adelie

penguins in Antarctica with over 250,000 breeding pairs.

Wed, 24.02.2027 Relaxation at sea

Thu, 25.02.2027 Cruising off the Balleny Islands/New Zealand

On your cruise, you will come across untouched island worlds with a rich fauna that are hardly known in our latitudes. Nature conservation is playing an increasingly important role in their preservation, which is why permits are becoming more and more complex. Destinations in New Zealand depend on whether the authorities grant their permission. If they give the green light, you will be able to enjoy mystical views when cruising off the Balleny Islands, as steep cliffs rise suddenly from the sea. And colonies of Adelie and chinstrap penguins fill the largely glaciated island group with life. With a small circle of like-minded people, your goal is to discover these paradises and develop a special awareness and appreciation for them.

Fri, 26.02.2027 - Sat, 27.02.2027 Relaxation at sea

Sun, 28.02.2027 - Tue, 02.03.2027 Cruising off the Subantarctic Islands of New Zealand

New Zealand's Subantarctic Islands seem to have been forgotten by the rest of the world. Their wildly romantic, unspoilt landscapes are a UNESCO World Heritage Site and enjoy the highest protection of any nature reserves in New Zealand. Landings depend on authorisation from the authorities, who aim to keep the islands free from invasive species. Thanks to your small, manoeuvrable expedition ship, you will be able to cruise as close to the coastline as the authorities allow. Heather and wild flowers give Campbell Island a special kind of charm. The island is home to the world's largest breeding colony of southern royal albatrosses. The Auckland Islands are not only home to yellow-eyed penguins and New Zealand sea lions, they also have the lushest flora of all the islands. The Snares penguin, meanwhile, is only found on the Snares Islands, alongside Cape petrels and albatrosses.

Wed, 03.03.2027 Stewart Island

Peaks rising up to almost 1,000 m (3,280 ft), eight different ecosystems, 245

Wild Earth Travel

Small Ships, Big Adventures

0800 945 3327 (within New Zealand) | +64 (0) 3 365 1355 | 1800 107 715 (within Australia)

info@wildearth-travel.com | wildearth-travel.com



Wild Earth Travel

Small Ships, Big Adventures



wildearth-travel.com

info@wildearth-travel.com

km (152 miles) of hiking paths: the mountainous Rakiura National Park on Stewart Island is home to age-old flora and fauna. New Zealand's third largest island is a paradise for hiking and birdwatching with your experts. There are more kiwis than people living here and the chances of seeing these shy birds are high - maybe feeding on the beach. In the forests, you might also spot tomtits, fantails, parrots and parakeets. Silence and solitude, clean air and birdsong make the islands a special experience for all the senses. As well as the diversity of birdlife, Maori sites will also draw you under their spell. What will impress you the most? One thing is for certain: by making this semi-circumnavigation of the Antarctic, you will be one of the few people who have delved deep into the secrets of these remote regions.

[Thu, 04.03.2027 Relaxation at sea](#)

[Fri, 05.03.2027 Lyttelton \(Christchurch\)/New Zealand](#)

Arrival 06.00 hrs

Please Note:

Itineraries are subject to change.



Wild Earth Travel
Small Ships, Big Adventures

0800 945 3327 (within New Zealand) | +64 (0) 3 365 1355 | **1800 107 715** (within Australia)

info@wildearth-travel.com | wildearth-travel.com

Wild Earth Travel

Small Ships, Big Adventures

wildearth-travel.com

info@wildearth-travel.com

YOUR SHIP: HANSEATIC INSPIRATION/NATURE/SPIRIT

YOUR SHIP:	Hanseatic Inspiration/Nature/Spirit
VESSEL TYPE:	Expedition
LENGTH:	138 m
PASSENGER CAPACITY:	230
BUILT/REFURBISHED:	2021

The expedition class combines the thrill of true exploration with the comfort of luxury cruising. Aboard the small yet ultra-modern expedition ships HANSEATIC nature, HANSEATIC inspiration, and HANSEATIC spirit, a maximum of 230 guests can venture deep into some of the world's most remote and captivating regions -- from icy polar landscapes to tropical islands. These vessels are purpose-built for discovery, featuring advanced technology, the highest ice class for passenger ships (PC 6), and an expert team of scientists and expedition leaders who turn every journey into an enriching experience. Whether gliding through ice fields, landing by Zodiac in untouched bays, or learning from onboard experts, guests are immersed in nature and culture at their purest.

With over 30 years of expedition expertise, these voyages redefine adventure travel by blending knowledge, comfort, and sustainability. Guests enjoy world-class dining, elegant suites, and warm, attentive service while exploring regions inaccessible to larger ships. Every itinerary is designed to uncover hidden corners of the planet safely and respectfully -- leaving only traces of curiosity behind. From close-up wildlife encounters to

champagne toasts beside icebergs, each journey promises rare experiences and unforgettable memories, guided by a crew whose passion for discovery is matched only by their dedication to comfort and care.

Hanseatic Inspiration & The Hapag-Lloyd Experience



Experience

Wild Earth Travel

Small Ships, Big Adventures

0800 945 3327 (within New Zealand) | +64 (0) 3 365 1355 | 1800 107 715 (within Australia)

info@wildearth-travel.com | wildearth-travel.com

Wild Earth Travel

Small Ships, Big Adventures

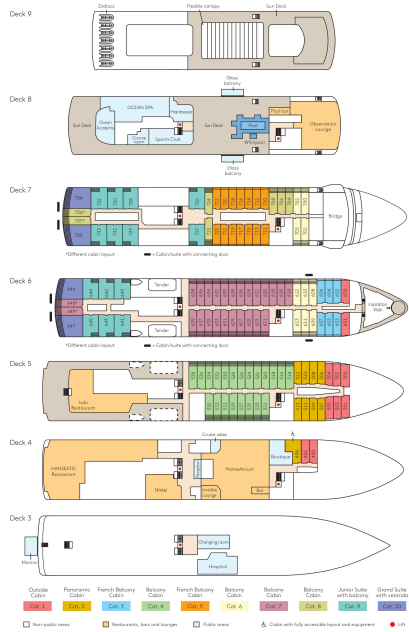


wildearth-travel.com

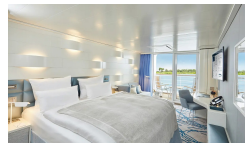
info@wildearth-travel.com

INSIDE YOUR SHIP

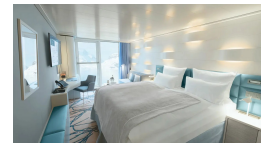
Deck plan HANSEATIC inspiration



Balcony Cabin



French Balcony Cabin



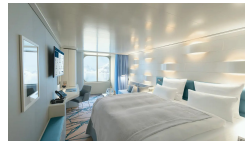
Grand Suite



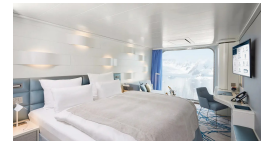
Junior Suite



Outside Cabin



Panoramic Cabin





Wild Earth Travel

Small Ships, Big Adventures



wildearth-travel.com

info@wildearth-travel.com

PRICING

01-Feb-2027 to 04-Mar-2027

Outside Cabin	28690 EUR pp
Panoramic Cabin	30240 EUR pp
French Balcony Cabin	32570 EUR pp
Balcony Cabin	35270 EUR pp
Junior Suite	45720 EUR pp
Grand Suite	0 pp



Wild Earth Travel

Small Ships, Big Adventures

0800 945 3327 (within New Zealand) | +64 (0) 3 365 1355 | 1800 107 715 (within Australia)

info@wildearth-travel.com | wildearth-travel.com