

Wild Earth Travel

Small Ships, Big Adventures

wildearth-travel.com

info@wildearth-travel.com

EXPEDITION ANTARCTICA - THE GREAT PENGUIN ADVENTURE

Join a magnificent Antarctica cruise with the possibility of sighting seven different species of penguins! We are proud to once again sail off to Antarctica on board the small and comfortable expedition ship, Ocean Nova, carrying a maximum of only 78 passengers. We sail from Ushuaia in Argentina, to the Falkland Islands, home to charming rockhopper penguins and graceful albatrosses. Our next stop is the remote island of South Georgia, a wildlife haven said to have more wildlife per square meter than any other place on the planet. Watching the huge elephant seals fight for their harems and being greeted by hundreds of thousands of breeding king penguins is a truly unbelievable experience. We then continue to the most remote and isolated continent - Antarctica. Here, we explore the dramatic landscapes with gigantic icebergs, scenic channels, and bustling penguin colonies. Welcome on board!



ITINERARY

Day 1: Ushuaia, Argentina

Our great Antarctic adventure starts in Ushuaia, beautifully surrounded by snow-covered mountains, where we stay one night at a centrally located hotel. This little town is also referred to as the "End of the World".

Day 2: The expedition cruise begins

In the morning, you will have the opportunity to explore Ushuaia on your own before meeting your guides and fellow travellers for lunch. In the afternoon, we board the Ocean Nova and sail out through the Beagle Channel - our great Antarctic expedition has begun! If we're lucky, we might even see penguins -

Wild Earth Travel

Small Ships, Big Adventures

0800 945 3327 (within New Zealand) | +64 (0) 3 365 1355 | 1800 107 715 (within Australia)

info@wildearth-travel.com | wildearth-travel.com

Wild Earth Travel

Small Ships, Big Adventures

wildearth-travel.com

info@wildearth-travel.com

keep an eye out for swimming Magellanic penguins in the Beagle Channel!

Day 3: At sea

We spend a day at sea followed by a range of sea birds such as petrels, fulmars and albatrosses that gracefully follow our ship. Whales and dolphins may also be seen in the surrounding waters and our polar experts start their exciting lecture program.

Day 4: West Falkland

Our plan is to explore the western islands of the archipelago, which are isolated and windswept but home to many seabirds and migratory birds including the black-browed albatross. Weather permitting, we go ashore and explore Saunders Island a penguin hotspot that is one of the only places on earth where 4 penguin species nest side by side. Here we can find gentoo, rockhopper, king and Magellanic penguin rookeries as well as nesting black-browed albatross. You can sit on the white sand beach watching the penguins come and go while the striated caracaras patrol overhead.

Day 5: Stanley, East Falklands

We visit Stanley, the capital of the Falkland Islands. As we wander through the charming streets with small houses and learn how this quiet harbour was once a major port in the 19th century for ships attempting to round the waters of Cape Horn. We also make a stop in Stanley's famed philatelic museum with its impressive collection of historic stamps.

Day 6 - 7: Southern Ocean

We sail southeast, South Georgia bound. The anticipation grows especially when we cross the Antarctic Convergence and notice a dramatic drop in temperature. Shipboard presentations will continue, featuring the exciting history and abundant wildlife of South Georgia. Wildlife will guide us into the island; keep a lookout in the ocean for whales, seals and penguins swimming and diving.

Day 8 - 11: South Georgia

Majestic mountains, mighty glaciers and beaches full of king penguins greet us on the island of South Georgia. We arrive in the beginning of summer when there are few ships in the vicinity and the peaks of the dramatic mountain ranges are still snow-covered. If you are interested in wildlife, South Georgia is a true oasis. Hundreds of thousands of penguins greet us at places like St. Andrew's Bay and Salisbury Plain. Huge elephant seals lounge on sandy beaches and this time of the year we may see dramatic fights for a position as the king of a harem. The island is also home to several other species of penguin such as macaroni, gentoo and chinstrap penguin, along with the playful and feisty fur seals. South Georgia played a significant role in Shackleton's epic adventure. After his ship *Endurance* sank, he crossed the treacherous ocean in an open lifeboat to reach the islands. We hope to visit Shackleton's grave at Grytviken, once an active whaling station, which now houses a charming small museum.

Day 12 - 14: At sea

We now set sails towards the world's most remote continent - Antarctica, faithfully accompanied by many seabirds. Our polar experts continue to fill our minds with heroic stories of some of the earliest daredevils to explore Antarctica. We also keep our eyes open for the first iceberg, which may appear on the horizon at any time now!

Day 15 - 18: The South Shetland Islands & the Antarctic Peninsula

This is a true Antarctic expedition cruise and our exact route the following days is subject to weather and ice conditions. Below are examples of places we may visit.

We hope to go ashore at Elephant Island, where we will learn more about the famous Antarctic adventures of Sir Ernest Shackleton. This island was a place of refuge in 1916 for Shackleton and his crew after his ship was destroyed by pack ice in the Weddell Sea more than 100 years ago. Following the loss of their ship the men reached Elephant Island after a harrowing ordeal on drifting ice floes. They established a camp at a place they called Point Wild, named after Shackleton's commander Frank Wild and now the home of nesting chinstrap penguins.

Wild Earth Travel

Small Ships, Big Adventures

0800 945 3327 (within New Zealand) | +64 (0) 3 365 1355 | 1800 107 715 (within Australia)

info@wildearth-travel.com | wildearth-travel.com



Wild Earth Travel

Small Ships, Big Adventures



wildearth-travel.com

info@wildearth-travel.com

We will spend some time cruising among the South Shetland Islands just off the Antarctic Peninsula. Dazzling wildlife sightings await us on our excursions to some of the islands including King George, Half Moon, Barrientos or Livingston. Adelie, chinstrap and gentoo penguins thrive here, as do several species of seal. Hopefully, we will also have chance to visit the flooded volcanic caldera of Deception Island. Along the coastline of the South Shetlands we keep our eyes open for humpback whales foraging for krill.

We continue south along the Antarctic Peninsula, where pack ice still covers large parts of the bays, and we watch the experienced officers navigate our ice-strengthened ship. We cruise through labyrinths of icebergs some of which may have resting penguins looking curiously back at us. In good ice conditions, we hope to set foot on the Antarctic continent in Hope Bay or Paradise Harbour. The scenery here, from the colossal icebergs to the seemingly endless Antarctic ice sheet, is truly breath-taking.

Day 19 - 20: Drake Passage

As we leave this magical place, heading across the Drake Passage, time will be spent sharing and reflecting on the wonderful experiences of the last few days. As we approach the South American continent its possible to see whales, dolphins and seals. We celebrate the conclusion of our Antarctic expedition with a farewell dinner on board.

Day 21: Ushuaia, Argentina

In the early morning we disembark in Ushuaia and explore this quaint little town on our own.

Please note:

Our exact route will depend on ice and weather conditions. The planned itinerary will be updated throughout the voyage in order to take advantage of favourable conditions. Flexibility is the key to a successful expedition!



Wild Earth Travel
Small Ships, Big Adventures

0800 945 3327 (within New Zealand) | +64 (0) 3 365 1355 | 1800 107 715 (within Australia)

info@wildearth-travel.com | wildearth-travel.com

Wild Earth Travel

Small Ships, Big Adventures



wildearth-travel.com

info@wildearth-travel.com

YOUR SHIP: OCEAN NOVA

YOUR SHIP:	Ocean Nova
VESSEL TYPE:	Expedition
LENGTH:	73 metres
PASSENGER CAPACITY:	86
BUILT/REFURBISHED:	1992 / 2006

The Ocean Nova, built in Denmark in 1992 and fully refurbished in 2006, is a small yet comfortable expedition vessel accommodating up to 84 passengers. Cabins are spread across two decks and include single, double, and triple accommodations, all with sea views and private facilities. Designed with Scandinavian light woods, the cabins feature ample storage, desks, and flexible bedding arrangements, ensuring a practical and cosy retreat after a day of exploration. Passengers can relax in the Panorama Lounge, which offers panoramic views, daily briefings from the expedition team, and lectures on subjects ranging from ornithology to geology, while the library, small gym, and medical facilities enhance onboard comfort.

Dining aboard the Ocean Nova is informal yet enjoyable, with a single-sitting dining room offering a combination of table service and buffet, allowing all guests to dine together while taking in views through the portholes. Life on board is relaxed and immersive, often spent on deck watching for wildlife or simply admiring the surrounding landscapes. With one of the highest ice classes (1B) and a powerful 2000 hp diesel engine, the Ocean Nova is equipped to navigate icy waters or tranquil lochs

with ease. A crew of 34, including North European officers, ensures both passenger safety and an enriching expedition experience, complemented by fully enclosed lifeboats and an onboard medical clinic.



cal clinic.

Wild Earth Travel

Small Ships, Big Adventures

0800 945 3327 (within New Zealand) | +64 (0) 3 365 1355 | 1800 107 715 (within Australia)

info@wildearth-travel.com | wildearth-travel.com

Wild Earth Travel

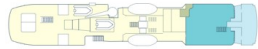
Small Ships, Big Adventures



wildearth-travel.com

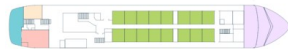
info@wildearth-travel.com

INSIDE YOUR SHIP



TOP DECK

- ZODIAC DECK
- PANORAMA LOUNGE
- OBSERVATION DECK
- BAR



BRIDGE DECK

- AFT LOUNGE
- GYM
- BRIDGE
- LIBRARY
- CATEGORY 4



UPPER DECK

- DINING ROOM
- CATEGORY 1
- CATEGORY 2
- CATEGORY 3
- CATEGORY 5
- CATEGORY 6



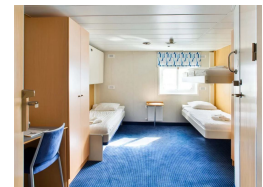
MAIN DECK

- SOUVENIR SHOP
- ZODIAC ACCESS
- CLINIC

Single cabin



Triple cabin



Twin cabin. From



Wild Earth Travel

Small Ships, Big Adventures

0800 945 3327 (within New Zealand) | +64 (0) 3 365 1355 | 1800 107 715 (within Australia)

info@wildearth-travel.com | wildearth-travel.com



Wild Earth Travel

Small Ships, Big Adventures



wildearth-travel.com

info@wildearth-travel.com

PRICING

28-Oct-2026 to 17-Nov-2026

Triple cabin	14590 USD pp
Twin cabin. From	16990 USD pp
Single cabin	31490 USD pp

Optional extras & upgrades

Pre and post cruise extension

For those of you who want to experience the bustling city of Buenos Aires we offer a pre and post cruise extension, including two hotel nights, sightseeing, dinner and flight Buenos Aires - Ushuaia with return. Please contact us for more information.



Wild Earth Travel
Small Ships, Big Adventures

0800 945 3327 (within New Zealand) | +64 (0) 3 365 1355 | 1800 107 715 (within Australia)

info@wildearth-travel.com | wildearth-travel.com