

Wild Earth Travel

Small Ships, Big Adventures

wildearth-travel.com

info@wildearth-travel.com

EXPEDITION ANTARCTICA: SOUTH GEORGIA AND ANTARCTIC PENINSULA

New in the programme: in just 14 days, the focus in the Antarctic Ocean will be on the wildlife paradise of South Georgia and the Antarctic Peninsula. With impressive icebergs, glaciers and a fascinating penguin world.



ITINERARY

Day 1 Charter flight to Ushuaia Transfer to embarkation point Ushuaia/Argentina, departure 18.00 hrs

Days 2 - 4 Relaxation at sea

Days 5 - 6 South Georgia

Days of adventure and great experiences lie ahead of you, when rugged peaks on the horizon signal your approach to this unique animal paradise. South

Wild Earth Travel

Small Ships, Big Adventures

0800 945 3327 (within New Zealand) | +64 (0) 3 365 1355 | 1800 107 715 (within Australia)

info@wildearth-travel.com | wildearth-travel.com

Wild Earth Travel

Small Ships, Big Adventures

wildearth-travel.com

info@wildearth-travel.com

Georgia is often referred to as the "cold Serengeti". Hundreds of thousands of king penguins blanket the island's coastlines and mountain slopes. On numerous trips and landings with the Zodiacs, you will experience the animal world from a respectful distance. With a little luck, you will see elephant seals fighting over a harem or gentoo and king penguins in their natural habitat. Your experts, who have extensive experience in the Antarctic, will familiarise you with the flora and fauna. The pioneering days of polar research will come to life for you in Grytviken: in the former whaling station, you will visit the grave of Sir Ernest Shackleton and commemorate the heroic efforts with which he once saved his crew.

Day 7 Relaxation at sea

Days 8 - 12 South Orkney Islands , South Shetland Islands , Weddell Sea , Antarctic Peninsula

The South Orkney Islands, a small group of islands with a surface area of around 620 km² (239 mi.²), are located in the Scotia Sea. A lonely, glaciated world with ice deserts - and more animal species than on the Galapagos Islands, as scientists have discovered. Who would guess there are around 1,200 animal species here? The South Orkney Islands are home to numerous varieties of penguin, whale and seal, as well as leopard seals. With luck, you will also see icebergs drifting off the rugged coast. In contrast, the Argentinian Orcadas research station - which has been staffed since 1904 - houses just a few people. Depending on the conditions and approval from the station, you will land in the Zodiacs to gain an impression of the isolated life of polar explorers in the area.

The South Shetland Islands form a long chain in the ocean. The island group opens up exciting chapters of Antarctic exploration and provides expert insights into geology. Here, your small manoeuvrable ship can again prove its expedition capability when it sails into the flooded caldera of the extinct volcano that forms Deception Island. Flanked by rock faces up to 50 m (164 ft) in height, the black sand in front of you gives off steam as a testament to a past eruption - and you in the heart of the scenery. Elephant Island, where history surrounds you, is legendary: polar explorer Sir Ernest Shackleton and his crew spent months here after abandoning their ship in the ice. You, too, will be enchanted by the scenery. Jagged crags loom fiercely on the horizon and the evening sun casts a delicate pink glow over the snowfields.

This expedition takes you on a flexible route towards adventure through the Weddell Sea. The ice cracks and crunches around the ship's reinforced bow,

conveying just how challenging the hardships were that the pioneers of polar research had to endure. Where weather and ice conditions dictate the route, the experienced crew reacts flexibly and spontaneously to provide you with unforgettable expedition moments. The Weddell Sea is home to spectacular ice formations - from majestic tabular icebergs occupied by Adelie penguins to ice shelves as tall as white cliffs and dense carpets of pack ice. How far into this region can your expedition ship venture?

The Antarctic Peninsula, part of the coldest continent on Earth, may seem inhospitable at first glance, but it is actually a paradise for countless animal species that have adapted perfectly. Enjoy unforgettable moments when, for example, you set foot on the Antarctic mainland. Snow-covered peaks, imposing icebergs and towering glaciers surround you. On Petermann Island, keep an eye out for gentoo and Adelie penguins and the blue-eyed cormorants that have their breeding colonies here.

Days 13 - 14 Sailing through the Drake Passage

Day 15 Ushuaia/Argentina, arrival 06.00 hrs Charter flight to Buenos Aires

Please note:

Itineraries are subject to change.

Wild Earth Travel

Small Ships, Big Adventures

0800 945 3327 (within New Zealand) | +64 (0) 3 365 1355 | 1800 107 715 (within Australia)

info@wildearth-travel.com | wildearth-travel.com



Wild Earth Travel

Small Ships, Big Adventures



wildearth-travel.com

info@wildearth-travel.com

YOUR SHIP: HANSEATIC INSPIRATION/NATURE/SPIRIT

YOUR SHIP:	Hanseatic Inspiration/Nature/Spirit
VESSEL TYPE:	Expedition
LENGTH:	138 m
PASSENGER CAPACITY:	230
BUILT/REFURBISHED:	2021

champagne toasts beside icebergs, each journey promises rare experiences and unforgettable memories, guided by a crew whose passion for discovery is matched only by their dedication to comfort and care.

The expedition class combines the thrill of true exploration with the comfort of luxury cruising. Aboard the small yet ultra-modern expedition ships HANSEATIC nature, HANSEATIC inspiration, and HANSEATIC spirit, a maximum of 230 guests can venture deep into some of the world's most remote and captivating regions -- from icy polar landscapes to tropical islands. These vessels are purpose-built for discovery, featuring advanced technology, the highest ice class for passenger ships (PC 6), and an expert team of scientists and expedition leaders who turn every journey into an enriching experience. Whether gliding through ice fields, landing by Zodiac in untouched bays, or learning from onboard experts, guests are immersed in nature and culture at their purest.

With over 30 years of expedition expertise, these voyages redefine adventure travel by blending knowledge, comfort, and sustainability. Guests enjoy world-class dining, elegant suites, and warm, attentive service while exploring regions inaccessible to larger ships. Every itinerary is designed to uncover hidden corners of the planet safely and respectfully -- leaving only traces of curiosity behind. From close-up wildlife encounters to



t and care.



Wild Earth Travel

Small Ships, Big Adventures

0800 945 3327 (within New Zealand) | +64 (0) 3 365 1355 | **1800 107 715** (within Australia)

info@wildearth-travel.com | wildearth-travel.com

Wild Earth Travel

Small Ships, Big Adventures

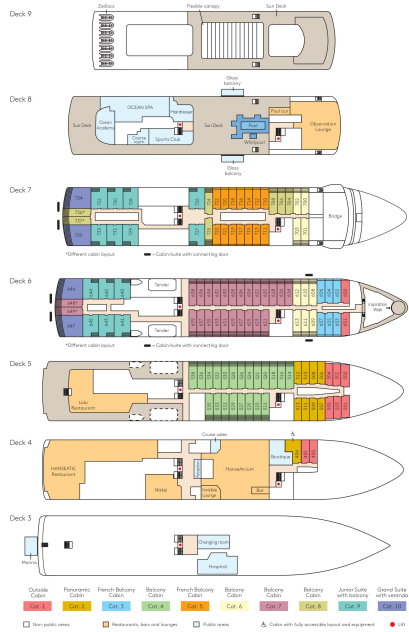


wildearth-travel.com

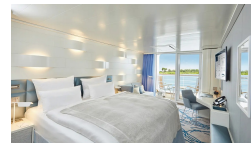
info@wildearth-travel.com

INSIDE YOUR SHIP

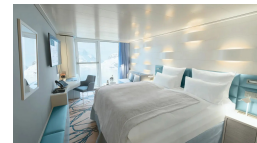
Deck plan HANSEATIC inspiration



Balcony Cabin. From



French Balcony Cabin. From



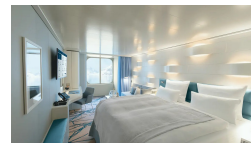
Grand Suite. From



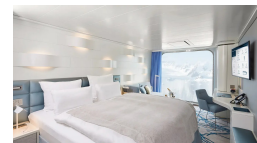
Junior Suite. From



Outside Cabin. From



Panoramic Cabin. From



Wild Earth Travel
Small Ships, Big Adventures

0800 945 3327 (within New Zealand) | +64 (0) 3 365 1355 | 1800 107 715 (within Australia)

info@wildearth-travel.com | wildearth-travel.com



Wild Earth Travel

Small Ships, Big Adventures



wildearth-travel.com

info@wildearth-travel.com

PRICING

02-Dec-2028 to 16-Dec-2028

Outside Cabin. From	12320 EUR pp
Panoramic Cabin. From	12970 EUR pp
French Balcony Cabin. From	13970 EUR pp
Balcony Cabin. From	15140 EUR pp
Junior Suite. From	21040 EUR pp
Grand Suite. From	28590 EUR pp



Wild Earth Travel

Small Ships, Big Adventures

0800 945 3327 (within New Zealand) | +64 (0) 3 365 1355 | 1800 107 715 (within Australia)

info@wildearth-travel.com | wildearth-travel.com