

Wild Earth Travel

Small Ships, Big Adventures

wildearth-travel.com

info@wildearth-travel.com

CLASSIC ANTARCTICA ABOARD USHUAIA

Our Classic Antarctic adventure cruises on board the USHUAIA offer the ultimate introduction to the White Continent. Embarking and disembarking in the port of Ushuaia, they include many of the wildlife and scenic highlights of the Antarctic Peninsula and the South Shetland Islands. You will often make two landings a day via our fleet of zodiac craft. Visiting Antarctica, truly the last pristine region of the world, in the southern summer is a rare and unique experience, surrounded by spectacular scenery and ice-filled channels. The constantly changing weather, scenery and colors provide marvelous opportunities for photographers and will leave you awestruck and sometimes overwhelmed. Our itineraries are expertly planned to take best advantage of the amazing wildlife and spectacular scenery during each time of the Antarctic season. Your Expedition Leader and his team takes you to remote places only visited by few people before. Amazingly busy penguin colonies, spectacular variety of seabirds, abundance of seals and magnificent whales await you, all set in a breathtaking scenery of imposing mountain ranges, ice-filled channels, tabular and beautifully shaped icebergs and glaciers. Please note: some departures are longer and will offer an extra day in the area of the Antarctic Peninsula and South Shetland Islands.



ITINERARY

Day 1: Depart from Ushuaia

Wild Earth Travel

Small Ships, Big Adventures

0800 945 3327 (within New Zealand) | +64 (0) 3 365 1355 | 1800 107 715 (within Australia)

info@wildearth-travel.com | wildearth-travel.com

Wild Earth Travel

Small Ships, Big Adventures

wildearth-travel.com

info@wildearth-travel.com

Embark the USHUAIA in the afternoon and meet your expedition and lecture staff. After you have settled into your cabins we sail along the famous Beagle Channel and the scenic Mackinlay Pass.

Day 2 & 3: Crossing the Drake Passage

Named after the renowned explorer, Sir Francis Drake, who sailed these waters in 1578, the Drake Passage also marks the Antarctic Convergence, a biological barrier where cold polar water sinks beneath the warmer northern waters. This creates a great upwelling of nutrients, which sustains the biodiversity of this region. The Drake Passage also marks the northern limit of many Antarctic seabirds. As we sail across the passage, Antarpoly Expeditions' lecturers will be out with you on deck to help in the identification of an amazing variety of seabirds, including many albatrosses, which follow in our wake. The USHUAIA's open bridge policy allows you to join our officers on the bridge and learn about navigation, watch for whales, and enjoy the view. A full program of lectures will be offered as well. The first sightings of icebergs and snow-capped mountains indicate that we have reached the South Shetland Islands, a group of twenty islands and islets first sighted in February 1819 by Capt. William Smith of the brig Williams. With favorable conditions in the Drake Passage our lecturers and naturalists will accompany you ashore as you experience your first encounter with the penguins and seals on Day 3.

Day 4 to 7: Exploring the Antarctic Peninsula and the South Shetland Islands

The South Shetland Islands are a haven for wildlife. Vast penguin rookeries, beaches ruled by Antarctic fur seals and Southern elephant seals make every day spent in this amazing island group unforgettable. Sailing through the narrow passage into the flooded caldera of Deception Island is breathtaking. King George Island, the largest of the South Shetland Islands, features colonies of nesting Gentoo and Chinstrap Penguins, Kelp Gulls, Blue-eyed Cormorants, Antarctic Terns and Southern Giant Petrels and is home to scientific bases of many different countries. Chinstrap and Gentoo Penguins as well as elephant seals await you at Livingston Island. The Antarctic Peninsula's remarkable history will provide you with a type of excitement often only associated with the early explorers. You will have plenty of time to explore its amazing scenery, a pristine wilderness of snow, ice, mountains and waterways, and an incredible wide variety of wildlife. Apart from penguins and seabirds

you are very likely to see Weddell, crabeater and leopard seals as well as Minke, killer (orca) and humpback whales at close range. We hope to navigate some of the most beautiful waterways (depending on the ice conditions): the Gerlache Strait, the Neumayer Channel, and the Lemaire Channel, the latter are narrow passages between towering rock faces and spectacular glaciers. We plan to make at least two landings per day and possible landing sites may include: Paradise Bay is perhaps the most aptly named place in the world and we attempt a landing on the continent proper. After negotiating the iceberg-strewn waters of the Antarctic Sound, we hope to visit the bustling Adelie Penguin (over 100,000 pairs breed here) and Blue-eyed Cormorant colonies on Paulet Island. The Nordenskjold expedition built a stone survival hut here in 1903. Today its ruins have been taken over by nesting penguins. Further exploration may take you to the Melchior Island group, Cuverville Island, Portal Point, Neko Harbour, Pleneau Island and if ice conditions permit, to Petermann Island for a visit to the southernmost colony of Gentoo Penguins.

Day 8 & 9: At Sea crossing the Drake Passage, northbound

We leave Antarctica and head north across the Drake Passage. Join our lecturers and naturalists on deck as we search for seabirds and whales and enjoy some final lectures. Take the chance to relax and reflect on the fascinating adventures of the past days on the way back to Ushuaia.

Day 10: Arrival in Ushuaia

We arrive at the port of Ushuaia in the early morning and disembark the USHUAIA after breakfast. Please note: The above itinerary is a guide only. Our exact route and program will vary to take best advantage of local weather and ice conditions and opportunities to view wildlife. Changes will be made by the Captain and/or Expedition Leader to facilitate the best results from the prevailing conditions. A daily program sheet will be issued on board. Flexibility is the key to success.

Please Note:

Itineraries are subject to change.

Wild Earth Travel

Small Ships, Big Adventures

0800 945 3327 (within New Zealand) | +64 (0) 3 365 1355 | 1800 107 715 (within Australia)

info@wildearth-travel.com | wildearth-travel.com



Wild Earth Travel

Small Ships, Big Adventures



wildearth-travel.com

info@wildearth-travel.com

YOUR SHIP: USHUAIA

YOUR SHIP:	Ushuaia
VESSEL TYPE:	Expedition
LENGTH:	84.73 metres
PASSENGER CAPACITY:	90
BUILT/REFURBISHED:	1970

The Ushuaia is a refurbished expedition vessel designed for immersive polar cruising, accommodating up to 90 passengers in 46 cabins and suites. Built in 1970 and ice-strengthened to Ice Class C, the ship combines proven capability with practical comfort for remote-region exploration. Multiple public spaces include a dining room, bar, lounge areas and a multimedia room, supporting briefings, social time and downtime between landings. A fleet of eight zodiacs enables efficient shore operations and wildlife encounters.

Cabin options range from shared-bath standard twins to spacious suites, all designed with function and rest in mind after active expedition days. Most cabins offer ocean views, private bathrooms, desks and essential amenities, with layouts suited to solo travellers, couples, families or small groups. With a maximum speed of 14 knots, a stable hull and an experienced crew, The Ushuaia prioritises access, safety and operational reliability over luxury excess, making it a focused platform for genuine expedition travel.



Wild Earth Travel

Small Ships, Big Adventures

0800 945 3327 (within New Zealand) | +64 (0) 3 365 1355 | 1800 107 715 (within Australia)

info@wildearth-travel.com | wildearth-travel.com

Wild Earth Travel

Small Ships, Big Adventures



wildearth-travel.com

info@wildearth-travel.com

INSIDE YOUR SHIP

Bridge Deck H

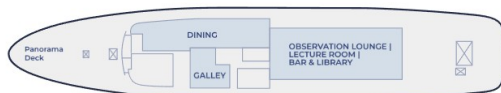


Upper Deck G



● Suites ● Superior Twin Private Cabins ● Premier Twin Private Cabin ● Premier Single Private Cabins
(View abbreviated by offset)

Main Deck F



Deck E

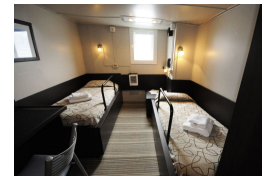


● Standard Twin Shared Bathroom ● Standard Plus Twin Private Cabin ● Standard Plus Triple Private Cabin

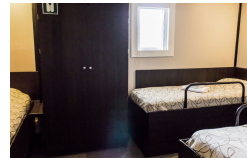
Premier Single



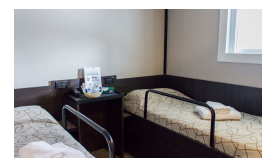
Premier Twin



Standard Plus Triple



Standard Plus Twin



Standard Twin



Suite Twin



Superior Twin



Wild Earth Travel

Small Ships, Big Adventures

wildearth-travel.com

info@wildearth-travel.com

PRICING

03-Nov-2026 to 12-Nov-2026

Standard Plus Triple	5490 USD pp
Standard Twin	6120 USD pp
Standard Plus Twin	6890 USD pp
Premier Twin	7990 USD pp
Superior Twin	8790 USD pp
Suite Twin	9430 USD pp
Premier Single	9590 USD pp

01-Dec-2026 to 10-Dec-2026

Standard Plus Triple	6390 USD pp
Standard Twin	7190 USD pp
Standard Plus Twin	7990 USD pp
Premier Twin	9450 USD pp
Superior Twin	10390 USD pp
Suite Twin	11120 USD pp
Premier Single	11320 USD pp

12-Nov-2026 to 21-Nov-2026

Standard Plus Triple	6390 USD pp
Standard Twin	7190 USD pp
Standard Plus Twin	7990 USD pp
Premier Twin	9450 USD pp
Superior Twin	10390 USD pp
Suite Twin	11120 USD pp
Premier Single	11320 USD pp

10-Dec-2026 to 19-Dec-2026

Standard Plus Triple	6390 USD pp
Standard Twin	7190 USD pp
Standard Plus Twin	7990 USD pp
Premier Twin	9450 USD pp
Superior Twin	10390 USD pp
Suite Twin	11120 USD pp
Premier Single	11320 USD pp

21-Nov-2026 to 30-Nov-2026

Standard Plus Triple	7190 USD pp
Standard Twin	7790 USD pp
Standard Plus Twin	8980 USD pp
Premier Twin	10490 USD pp
Superior Twin	11490 USD pp
Suite Twin	12290 USD pp
Premier Single	12490 USD pp

Wild Earth Travel

Small Ships, Big Adventures

wildearth-travel.com

info@wildearth-travel.com

PRICING

19-Dec-2026 to 28-Dec-2026

Standard Plus Triple	7690 USD pp
Standard Twin	8390 USD pp
Standard Plus Twin	9790 USD pp
Premier Twin	11430 USD pp
Superior Twin	12580 USD pp
Suite Twin	13460 USD pp
Premier Single	13690 USD pp

18-Jan-2027 to 27-Jan-2027

Standard Plus Triple	8690 USD pp
Standard Twin	9390 USD pp
Standard Plus Twin	10790 USD pp
Premier Twin	12390 USD pp
Superior Twin	13590 USD pp
Suite Twin	14390 USD pp
Premier Single	14590 USD pp

29-Dec-2026 to 07-Jan-2027

Standard Plus Triple	8690 USD pp
Standard Twin	9390 USD pp
Standard Plus Twin	10790 USD pp
Premier Twin	12390 USD pp
Superior Twin	13590 USD pp
Suite Twin	14390 USD pp
Premier Single	14590 USD pp

28-Feb-2027 to 09-Mar-2027

Standard Plus Triple	6390 USD pp
Standard Twin	7190 USD pp
Standard Plus Twin	7990 USD pp
Premier Twin	9450 USD pp
Superior Twin	10390 USD pp
Suite Twin	11120 USD pp
Premier Single	11320 USD pp

08-Jan-2027 to 17-Jan-2027

Standard Plus Triple	8690 USD pp
Standard Twin	9390 USD pp
Standard Plus Twin	10790 USD pp
Premier Twin	12390 USD pp
Superior Twin	13590 USD pp
Suite Twin	14390 USD pp
Premier Single	14590 USD pp

Wild Earth Travel

Small Ships, Big Adventures

0800 945 3327 (within New Zealand) | +64 (0) 3 365 1355 | 1800 107 715 (within Australia)

info@wildearth-travel.com | wildearth-travel.com

Wild Earth Travel

Small Ships, Big Adventures

wildearth-travel.com

info@wildearth-travel.com

PRICING

09-Mar-2027 to 18-Mar-2027

Standard Plus Triple	6390 USD pp
Standard Twin	7190 USD pp
Standard Plus Twin	7990 USD pp
Premier Twin	9450 USD pp
Superior Twin	10390 USD pp
Suite Twin	11120 USD pp
Premier Single	11320 USD pp

18-Mar-2027 to 27-Mar-2027

Standard Plus Triple	6390 USD pp
Standard Twin	7190 USD pp
Standard Plus Twin	7990 USD pp
Premier Twin	9450 USD pp
Superior Twin	10390 USD pp
Suite Twin	11120 USD pp
Premier Single	11320 USD pp

27-Mar-2027 to 05-Apr-2027

Standard Plus Triple	6390 USD pp
Standard Twin	7190 USD pp
Standard Plus Twin	7990 USD pp
Premier Twin	9450 USD pp
Superior Twin	10390 USD pp
Suite Twin	11120 USD pp
Premier Single	11320 USD pp

03-Nov-2027 to 12-Nov-2027

Standard Plus Triple	6990 USD pp
Standard Twin	7690 USD pp
Standard Plus Twin	8290 USD pp
Premier Twin	8990 USD pp
Superior Twin	9990 USD pp
Suite Twin	10590 USD pp
Premier Single	10690 USD pp

12-Nov-2027 to 21-Nov-2027

Standard Plus Triple	7190 USD pp
Standard Twin	8190 USD pp
Standard Plus Twin	8890 USD pp
Premier Twin	10390 USD pp
Superior Twin	11290 USD pp
Suite Twin	11990 USD pp
Premier Single	12490 USD pp

Wild Earth Travel

Small Ships, Big Adventures

0800 945 3327 (within New Zealand) | +64 (0) 3 365 1355 | 1800 107 715 (within Australia)

info@wildearth-travel.com | wildearth-travel.com

Wild Earth Travel

Small Ships, Big Adventures

wildearth-travel.com

info@wildearth-travel.com

PRICING

21-Nov-2027 to 30-Nov-2027

Standard Plus Triple	8190 USD pp
Standard Twin	8890 USD pp
Standard Plus Twin	10290 USD pp
Premier Twin	11790 USD pp
Superior Twin	12890 USD pp
Suite Twin	13790 USD pp
Premier Single	13990 USD pp

19-Dec-2027 to 28-Dec-2027

Standard Plus Triple	9190 USD pp
Standard Twin	9790 USD pp
Standard Plus Twin	11290 USD pp
Premier Twin	12690 USD pp
Superior Twin	13890 USD pp
Suite Twin	14690 USD pp
Premier Single	14990 USD pp

01-Dec-2027 to 10-Dec-2027

Standard Plus Triple	7790 USD pp
Standard Twin	8390 USD pp
Standard Plus Twin	8960 USD pp
Premier Twin	10590 USD pp
Superior Twin	11590 USD pp
Suite Twin	12290 USD pp
Premier Single	12590 USD pp

28-Dec-2027 to 06-Jan-2028

Standard Plus Triple	9190 USD pp
Standard Twin	9790 USD pp
Standard Plus Twin	11290 USD pp
Premier Twin	12690 USD pp
Superior Twin	13890 USD pp
Suite Twin	14690 USD pp
Premier Single	14990 USD pp

10-Dec-2027 to 19-Dec-2027

Standard Plus Triple	7790 USD pp
Standard Twin	8390 USD pp
Standard Plus Twin	8960 USD pp
Premier Twin	10590 USD pp
Superior Twin	11590 USD pp
Suite Twin	12290 USD pp
Premier Single	12590 USD pp

Wild Earth Travel
Small Ships, Big Adventures

0800 945 3327 (within New Zealand) | +64 (0) 3 365 1355 | 1800 107 715 (within Australia)

info@wildearth-travel.com | wildearth-travel.com

Wild Earth Travel

Small Ships, Big Adventures



wildearth-travel.com

info@wildearth-travel.com

PRICING

06-Jan-2028 to 15-Jan-2028

Standard Plus Triple	9190 USD pp
Standard Twin	9790 USD pp
Standard Plus Twin	11290 USD pp
Premier Twin	12690 USD pp
Superior Twin	13890 USD pp
Suite Twin	14690 USD pp
Premier Single	14990 USD pp

25-Feb-2028 to 05-Mar-2028

Standard Plus Triple	7790 USD pp
Standard Twin	8390 USD pp
Standard Plus Twin	8960 USD pp
Premier Twin	10590 USD pp
Superior Twin	11590 USD pp
Suite Twin	12290 USD pp
Premier Single	12590 USD pp

15-Jan-2028 to 24-Jan-2028

Standard Plus Triple	9190 USD pp
Standard Twin	9790 USD pp
Standard Plus Twin	11290 USD pp
Premier Twin	12690 USD pp
Superior Twin	13890 USD pp
Suite Twin	14690 USD pp
Premier Single	14990 USD pp

05-Mar-2028 to 14-Mar-2028

Standard Plus Triple	7190 USD pp
Standard Twin	8190 USD pp
Standard Plus Twin	8890 USD pp
Premier Twin	10390 USD pp
Superior Twin	11290 USD pp
Suite Twin	11990 USD pp
Premier Single	12490 USD pp

24-Jan-2028 to 02-Feb-2028

Standard Plus Triple	9990 USD pp
Standard Twin	10690 USD pp
Standard Plus Twin	12190 USD pp
Premier Twin	13590 USD pp
Superior Twin	14790 USD pp
Suite Twin	15590 USD pp
Premier Single	15790 USD pp

Wild Earth Travel
Small Ships, Big Adventures

0800 945 3327 (within New Zealand) | +64 (0) 3 365 1355 | 1800 107 715 (within Australia)

info@wildearth-travel.com | wildearth-travel.com

Wild Earth Travel

Small Ships, Big Adventures



wildearth-travel.com

info@wildearth-travel.com

PRICING

14-Mar-2028 to 23-Mar-2028

Standard Plus Triple	7190 USD pp
Standard Twin	8190 USD pp
Standard Plus Twin	8890 USD pp
Premier Twin	10390 USD pp
Superior Twin	11290 USD pp
Suite Twin	11990 USD pp
Premier Single	12490 USD pp

23-Mar-2028 to 01-Apr-2028

Standard Plus Triple	7190 USD pp
Standard Twin	8190 USD pp
Standard Plus Twin	8890 USD pp
Premier Twin	10390 USD pp
Superior Twin	11290 USD pp
Suite Twin	11990 USD pp
Premier Single	12490 USD pp

Wild Earth Travel
Small Ships, Big Adventures

0800 945 3327 (within New Zealand) | +64 (0) 3 365 1355 | 1800 107 715 (within Australia)

info@wildearth-travel.com | wildearth-travel.com