

Wild Earth Travel

Small Ships, Big Adventures

wildearth-travel.com

info@wildearth-travel.com

BEST OF THE SOUTHERN OCEAN - SOUTH GEORGIA & FALKLANDS PHOTOGRAPHY EXPEDITION

This expedition cruise offers an unparalleled adventure from Ushuaia to Ushuaia. It features a rich itinerary with visits to the Falkland Islands, extensive exploration of South Georgia Island--a wildlife paradise renowned for its massive populations of seabirds, elephant seals, and fur seals, as well as the historical site of Grytviken. The journey is characterized by scenic wilderness, memorable excursions, expert presentations, and immersive experiences in some of the most remote corners of the world, all while navigating the majestic Southern Ocean.



ITINERARY

Day 1: Arrival in Ushuaia, Argentina (hotel night)

Welcome to Ushuaia, the world's southernmost city and starting point of our Antarctic expedition! Upon your arrival at the airport, you will be greeted by our staff and transferred to a quality hotel, which has been arranged by us and is included in the price of the itinerary. For the rest of the day, you are free to explore this vibrant port city and adventure hub.

For an introduction to local history and wildlife, the interesting Museo del Fin del Mundo is worth a visit. If you have time to spare, a variety of nature activities can be arranged to suit all interests and fitness levels, from hiking in nearby Tierra del Fuego National Park to wildlife viewing in the Beagle Channel. For dinner, Ushuaia offers a wide range of restaurants featuring Patagonian lamb and delectable Fuegian seafood.

Day 2: Welcome Aboard!

Wild Earth Travel

Small Ships, Big Adventures

0800 945 3327 (within New Zealand) | +64 (0) 3 365 1355 | **1800 107 715** (within Australia)

info@wildearth-travel.com | wildearth-travel.com



Wild Earth Travel

Small Ships, Big Adventures

wildearth-travel.com

info@wildearth-travel.com

Enjoy breakfast at your hotel and get ready for an exciting day. Today, we set sail on our beautiful Sea Spirit towards the Subantarctic islands.

Day 3: At sea

As we sail towards the subantarctic islands, make the most of your time! Attend our captivating presentations from experts, familiarize yourself with our Sea Spirit, and get ready for our arrival at a wildlife paradise.

Day 4-5: Falkland Islands

The remote and sparsely-populated Falkland Islands are a birders' paradise. The Falklands are also a great place to observe marine mammals. The waters around the archipelago are home to cetaceans such as Peale's dolphins and Commerson's dolphins. Our exact route and exploration opportunities are dependent on weather among these isolated and windswept islands.

We also intend to visit the port of Stanley, the charmingly British capital of the Falkland Islands. Attractions within pleasant walking distance along the waterfront promenade include the Falkland Islands Museum, the governor's house, a cathedral with impressive whalebone arch outside, a war memorial, quality gift shops, pubs, and views of shipwrecks in the harbor.

Day 6-7: Southern Ocean

From the Falkland Islands we head east toward South Georgia. We will cross the Antarctic Convergence, the biological boundary of the Southern Ocean. Briefings, bio-security procedures, and lectures from our experts prepare you for our arrival in South Georgia.

Day 8-14: South Georgia Island

This is expedition cruising at its most authentic. Our route and exploration opportunities in South Georgia are heavily dependent on the weather conditions we encounter. Our experienced captain and expedition leader decide the itinerary and continually adjust plans as conditions and opportunities warrant. You can be sure that the best possible advantage will be taken of the circumstances presented to us by nature in this wild and remote corner of the world. We take every safe opportunity to go ashore in this amazing place.

South Georgia is a scenic wilderness and an unrivaled paradise for subantarctic wildlife viewing. The islands are said to host upwards of 100 million seabirds, including numerous species of albatross, penguins, prions, petrels and terns. On beaches such as those at Salisbury Plain and St. Andrews Bay, over 100,000 elephant seals and three million fur seals jostle for space among innumerable penguins including stately king penguins and sprightly macaroni penguins. The recently completed rat eradication program is sure to make this wilderness even more pristine and rich with birdlife.

The bountiful waters surrounding South Georgia are also inhabited by an increasing number of whales. The historical whaling station of Grytviken is now home to the excellent South Georgia Museum managed by the South Georgia Heritage Trust. Grytviken is also the final resting place of Ernest Shackleton, the legendary polar explorer.

Our days in South Georgia are filled with memorable excursions, sumptuous meals, presentations by our experts, and enough incredible scenery and wildlife to fill your camera and overwhelm your emotions.

Day 15-16: Back to the Falkland Islands

It is time to head back toward the Falkland Islands. However, our adventures are not over yet. We will share our impressions, review all the great photos we've taken and enjoy a friendly atmosphere of like-minded fellow travellers.

Day 17: Falkland Islands

Wild Earth Travel

Small Ships, Big Adventures

0800 945 3327 (within New Zealand) | +64 (0) 3 365 1355 | **1800 107 715** (within Australia)

info@wildearth-travel.com | **wildearth-travel.com**



Wild Earth Travel

Small Ships, Big Adventures



wildearth-travel.com

info@wildearth-travel.com

In this remote and stunningly beautiful wilderness, seabirds and marine mammals are counted in the millions. The waters around the archipelago are home to cetaceans such as Peale's dolphins and Commerson's dolphins. In this rugged yet accessible environment, superb wildlife viewing is best complemented by active adventure. Our knowledgeable guides will offer hiking and hill climbing for an even greater perspective of this raw polar wilderness. This is expedition cruising at its most authentic. Our precise route and exploration opportunities will be shaped by weather. Our experienced captain and expedition leader will continually adjust plans to take maximum advantage of the conditions in this challenging polar environment.

Day 18: Southern Ocean

As you sail, immerse yourself in fascinating presentations from our expert staff and bond with fellow travelers. On the open deck, marvel at the sight of birds and marine mammals that grace our journey. South polar skuas, snow petrels, and albatrosses may escort our vessel, enhancing your experience with their majestic presence. This is also the time for festivities such as the Captain's Farewell Cocktail and the end-of-voyage slideshow. The seabirds you saw at the beginning of your voyage reappear, offering a full-circle experience of natural wonder.

Day 19: Disembarkation in Ushuaia, Argentina

After breakfast we say farewell in the city of Ushuaia. We provide a group transfer to the airport or to the town center if you wish to spend more time here. As you look back on your wonderful experience, you may already be looking forward to your next incredible polar adventure!

Please note:

Itineraries are subject to change.



Wild Earth Travel

Small Ships, Big Adventures

0800 945 3327 (within New Zealand) | +64 (0) 3 365 1355 | **1800 107 715** (within Australia)

info@wildearth-travel.com | **wildearth-travel.com**

Wild Earth Travel

Small Ships, Big Adventures

wildearth-travel.com

info@wildearth-travel.com

YOUR SHIP: SEA SPIRIT

YOUR SHIP:	Sea Spirit
VESSEL TYPE:	Small Ship Expedition
LENGTH:	90 metres
PASSENGER CAPACITY:	114
BUILT/REFURBISHED:	1992 / 2017

Like some of the birds we see in the Arctic and Antarctica, our m/v Sea Spirit is migratory and follows the sun, northbound in the summer and southbound in the winter, always ready for spontaneous discoveries - a pod of whales, a family of polar bears or a glaciated mountain vista. She is highly maneuverable and capable of navigating the narrow fjords of East Greenland and entering the small bays of Spitsbergen.

Onboard, we create a friendly and welcoming atmosphere for all our guests. They are united by one goal - to have a memorable wilderness experience and to become real polar adventurers. We believe that first-hand travel to such places makes one an ambassador for conservation, and helps strengthen our resolve to protect these natural environments for future generations.

Public areas include: Reception, Restaurant, Bar, Outdoor Bistro, Club Lounge, Library, Presentation Lounge, Infirmary, Gym, Bridge.

We have open Bridge policy. Talk to the Captain and officers. Watch landscapes from this special angle of view. Fix your location at a map of your expedition.



Wild Earth Travel

Small Ships, Big Adventures

0800 945 3327 (within New Zealand) | +64 (0) 3 365 1355 | **1800 107 715** (within Australia)

info@wildearth-travel.com | wildearth-travel.com

Wild Earth Travel

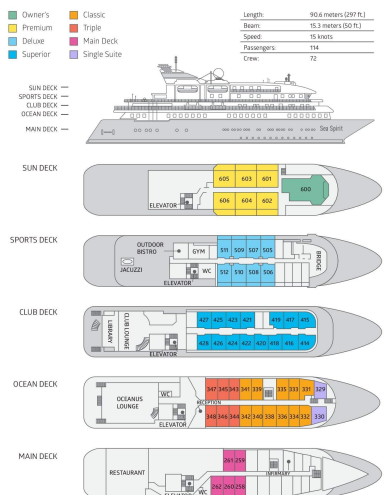
Small Ships, Big Adventures

wildearth-travel.com

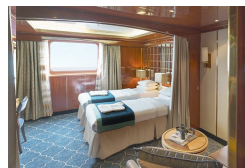
info@wildearth-travel.com

INSIDE YOUR SHIP

DECK PLAN M/V SEA SPIRIT



Classic Suite



Deluxe Suite



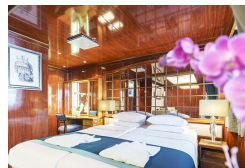
Main Deck Suite



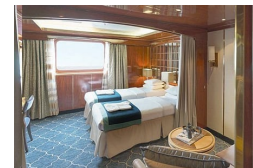
Owner's Suite



Premium Suite



Single Suite



Superior Suite



Triple Classic



Wild Earth Travel
Small Ships, Big Adventures

0800 945 3327 (within New Zealand) | +64 (0) 3 365 1355 | 1800 107 715 (within Australia)

info@wildearth-travel.com | wildearth-travel.com

Wild Earth Travel

Small Ships, Big Adventures

wildearth-travel.com

info@wildearth-travel.com

PRICING

23-Oct-2025 to 10-Nov-2025

Triple Classic	21995 AUD pp
Main Deck Suite	29095 AUD pp
Classic Suite	31295 AUD pp
Superior Suite	31795 AUD pp
Deluxe Suite	35395 AUD pp
Premium Suite	38095 AUD pp
Single Suite	43795 AUD pp
Owner's Suite	48195 AUD pp

23-Oct-2026 to 10-Nov-2026

Triple Classic	24895 AUD pp
Main Deck Suite	32795 AUD pp
Classic Suite	35195 AUD pp
Superior Suite	35795 AUD pp
Deluxe Suite	39795 AUD pp
Premium Suite	42795 AUD pp
Single Suite	49195 AUD pp
Owner's Suite	53995 AUD pp

Kayaking

Antarctica is a paddlers' paradise. The White Continent boasts some of the world's most impressive landscapes and is home to incredible marine wildlife. Sea Kayak Club members will have the opportunity to paddle through tranquil waters filled with glittering icebergs and porpoising penguins while surrounded by magnificent glaciers and mountains. The protected and picturesque waters of the Antarctic Peninsula offer the best sea kayaking opportunities in Antarctica. Sea Kayak Club is also offered on selected voyages to South Georgia, where members may have the rare opportunity to encounter the island's legendary abundance of wildlife from a kayaker's perspective, if the area's notoriously inclement weather permits.

Optional extras & upgrades