

# Wild Earth Travel

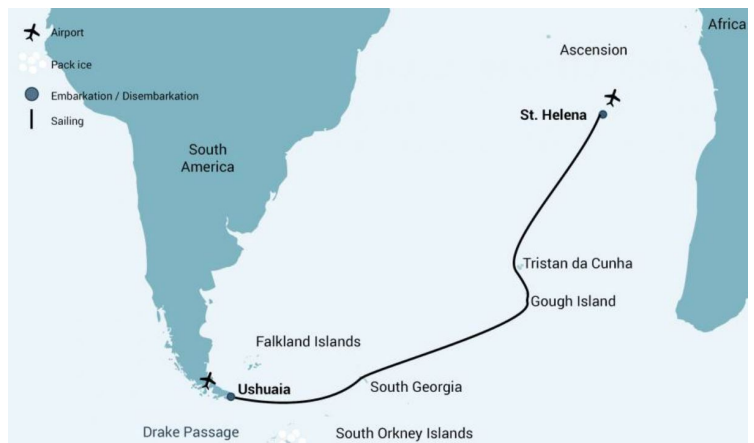
*Small Ships, Big Adventures*

[wildearth-travel.com](http://wildearth-travel.com)

[info@wildearth-travel.com](mailto:info@wildearth-travel.com)

## ATLANTIC ODYSSEY EXCLUDING ANTARCTIC PENINSULA

The Atlantic Odyssey cruise visits some of the remotest islands in the world, crossing the migratory paths of Arctic Terns, Long-tailed Skuas, other birds, and a variety of whales as they make their annual expeditions north for the breeding season.



### ITINERARY

#### Day 1: End of the World, Start of a Journey

Your voyage begins where the world drops off: Ushuaia, Argentina, reputed to be the southernmost city on the planet, located on the far southern tip of South America. Starting in the afternoon, you embark from this small resort town on Tierra del Fuego - nicknamed "The End of the World" - and sail the scenic, mountain-fringed Beagle Channel for the rest of the evening.

#### Day 2 - 4: Sea route to South Georgia

Today we are en route to South Georgia. After passing the Antarctic Convergence, which is a natural boundary formed when north-flowing cold waters collide with warmer sub-Antarctic waters, we enter the circum-Antarctic upwelling zone. Not only does the marine life change, the bird life changes, too: A variety of albatrosses and petrels show up, along with Cape pigeons and southern fulmars.

#### Day 5 - 7: South Georgia Journey

Wild Earth Travel

*Small Ships, Big Adventures*

0800 945 3327 (within New Zealand) | +64 (0) 3 365 1355 | 1800 107 715 (within Australia)

[info@wildearth-travel.com](mailto:info@wildearth-travel.com) | [wildearth-travel.com](http://wildearth-travel.com)

# Wild Earth Travel

*Small Ships, Big Adventures*

[wildearth-travel.com](http://wildearth-travel.com)

[info@wildearth-travel.com](mailto:info@wildearth-travel.com)

Your aim is to visit some of the world's top king penguin rookeries. This time of year you have a good chance of seeing these animals nesting on eggs, their chicks close by. The rookeries are overflowing, with waddling rush-hour traffic to and from the beach. Possible visits include: Salisbury Plain, St. Andrews Bay, Gold Harbour - Here you see not only the massive king penguin colony, but also elephant seals and limitless fur seal pups playing in the surf. Prion Island - This location is closed during the early part of the wandering albatross breeding season (November 20 - January 7). From January on, the breeding adults have found their partners and are sitting on eggs or nursing their chicks. Enjoy witnessing the gentle nature of these animals, which possess the largest wingspan of any birds in the world. Grytviken - You have the opportunity to check out this abandoned whaling station, where king penguins now walk the streets and elephant seals lie around like they own the place - because they just about do. You might also see the South Georgia Museum as well as Shackleton's grave. Cooper Bay - A great place for a Zodiac cruise, this bay also houses a rookery of macaroni penguins. King penguins, pintails, and giant petrels may also appear here.

## Day 8 - 12: Once More to the Sea

A pleasant tailwind often accompanies the vessel through the westerlies, and on both sides of the Convergence fly vast numbers of Antarctic and Subantarctic seabirds.

## Day 13: The quest continues at the great Gough Island

Today we plan to approach Gough Island for a Zodiac cruise in Quest Bay, if the weather permits. Here you might see northern rockhopper penguins and sub-Antarctic fur seals. In previous years, it has been possible for us to circumnavigate most of Gough Island's 33-mile circumference, taking in this area's splendid scenery and abundant wildlife.

## Day 14 - 17: Tristan da Cunha and all the pretty birds

The remote islands of Tristan da Cunha are famed for their plentiful bird populations, which include rockhopper penguins, several species of albatross, petrels, skuas, terns, and many others. Our goal during this stage of our voyage is to visit the small settlement on the west side of the main island, but

we might also land at Seal Bay on the south side of Tristan da Cunha or at Sandy Point on the east side.

In these stunning locations, you could encounter such exotic wildlife as yellow-nosed albatrosses and sub-Antarctic fur seals, all while exploring a rarely visited spot. We also intend to land at Nightingale Island and Inaccessible Island, both of which offer great views of beautiful seabirds ranging from yellow-nosed albatrosses to brown noddies.

Two days are reserved at Tristan da Cunha in case of bad weather, but please remember that nature determines our itineraries here: Since beginning the Atlantic Odyssey cruise in 1998, adverse weather led to the cancellation of 35% of Tristan da Cunha landings. If we have to divert for safety reasons, we will find good alternatives.

## Day 18 - 21: Subtropical seas and seabirds

Seabirds and dolphins indigenous to this region often follow the vessel.

## Day 22 - 24: St. Highlights of Saint Helena

After we land at Jamestown on Saint Helena Island, you will have the opportunity to enjoy the area's local culture, pleasant climate, and endemic bird life. You can pay a visit to Longwood House, where Napoleon died in exile; walk the 699-step Jacob's Ladder, if you're feeling ambitious; or snorkel the shallows offshore, seeing multitudes of tropical and subtropical fish.

## Please Note:

All itineraries are for guidance only. Programs may vary depending on local ice and weather conditions and in order to take advantage of opportunities to see wildlife. The on-board expedition leader determines the final itinerary. Itineraries may mention places that require permission to land, which must be granted by the relevant national authorities. Such permission is not granted prior to the publishing of these itineraries. Flexibility is paramount for expedition cruises. The average cruising speed of m/v Janssonius 10.5 knots.

Wild Earth Travel

*Small Ships, Big Adventures*

0800 945 3327 (within New Zealand) | +64 (0) 3 365 1355 | 1800 107 715 (within Australia)

[info@wildearth-travel.com](mailto:info@wildearth-travel.com) | [wildearth-travel.com](http://wildearth-travel.com)



# Wild Earth Travel

*Small Ships, Big Adventures*



[wildearth-travel.com](http://wildearth-travel.com)

[info@wildearth-travel.com](mailto:info@wildearth-travel.com)

## YOUR SHIP: PLANCIUS

<b>YOUR SHIP:</b>	<b>Plancius</b>
<b>VESSEL TYPE:</b>	<b>Expedition</b>
<b>LENGTH:</b>	<b>89 metres</b>
<b>PASSENGER CAPACITY:</b>	<b>108 - 116</b>
<b>BUILT/REFURBISHED:</b>	<b>1976 / 2009</b>

M/v "Plancius" was built in 1976 as an oceanographic research vessel for the Royal Dutch Navy and was named "Hr. Ms. Tydeman". The ship sailed for the Dutch Navy until June 2004 and was eventually purchased by Oceanwide Expeditions. The vessel was completely rebuilt as a passenger vessel in 2009 and complies with the latest SOLAS-regulations (Safety Of Life At Sea). M/v "Plancius" is classed by Lloyd's Register and flies the Dutch flag.

Perfect for any expedition

M/v "Plancius" accommodates 108 passengers with private toilet and shower in 4 quadruple porthole cabins, 9 twin porthole cabins, 25 twin cabins with window and 2 twin deluxe cabins, all (ca. 12,5 square meters) and 10 twin superior cabins (ca. 21 square meters). All cabins offer lower berths (one queen-size bed in the superior cabins and two single beds in the twin cabins), except for the 4 quadruple cabins (for 4 persons in 2x upper and lower beds).

Plancius: a vessel with comfort and character

Please be aware that a small number of cabins may have a partially obstructed view due to the design requirements of the ship. The best view is always on the outer deck or the bridge. The

vessel offers a restaurant/lecture room on deck 3 and a spacious observation lounge (with bar) on deck 5 with large windows, offering full panorama view. M/v "Plancius" has large open deck spaces (with full walk-around possibilities on deck 4), giving excellent opportunities to enjoy the scenery and wildlife. She is furthermore equipped with 10 Mark V zodiacs, including 40 HP 4-stroke outboard engines and 2 gangways on the starboard side, guaranteeing a swift zodiac operation. M/v "Plancius" is comfortable and nicely decorated, but is not a luxury vessel. Our voyages in the Arctic and Antarctic regions are primarily defined by an exploratory educational travel programme, spending as much time ashore as possible. Plancius fully meets our demands to achieve this. The vessel is equipped with a diesel-electric propulsion system which reduces the noise and vibration of the vessel considerably. The 3 diesel engines generate 1.230 horse-power each, giving the vessel a speed of 10 - 12 knots. The vessel is ice-strengthened and was specially built for oceanographic voyages. M/v "Plancius" is manned by an international crew of 40 (20 nautical crew and 20 hotel crew), 8 expedition staff (1 expedition leader, 1 assistant expedition leader and 6 guides/lecturers), and 1 doctor.

Age and Nationality

Passengers on a typical voyage range from their 30s to their 80s - with a majority usually from 45 - 65. Our expeditions attract independent-minded travellers from around the world. They are characterised by a strong interest in exploring remote regions. The camaraderie and spirit that develops aboard is an important part of the expedition experience. Many departures have several



Wild Earth Travel  
*Small Ships, Big Adventures*

0800 945 3327 (within New Zealand) | +64 (0) 3 365 1355 | 1800 107 715 (within Australia)

[info@wildearth-travel.com](mailto:info@wildearth-travel.com) | [wildearth-travel.com](http://wildearth-travel.com)



# Wild Earth Travel

*Small Ships, Big Adventures*

[wildearth-travel.com](http://wildearth-travel.com)

[info@wildearth-travel.com](mailto:info@wildearth-travel.com)

nationalities on board.

Dress code

In keeping with our expeditions atmosphere, dress on board is informal. Bring casual and comfortable clothing for all activities. Keep in mind that much of the spectacular scenery can be appreciated from deck, which can be slippery. Bring sturdy shoes with no-slip soles and make sure the parka is never far away in case of the call "Whales!" comes over the loudspeaker and you have to dash outside. Wear layers since it is comfortably warm aboard the ship - and often cold on deck.

Currency & payment

Refreshments from the bar and souvenirs will be charged to your cabin. The day before departure you can settle your bill with the Hotel Manager and pay by credit card (Visa or MasterCard) or cash (Euro or Dollar). We do not accept cheques of any kind. The prices and standard currency on board our vessels is the Euro. Other currencies may be accepted at the discretion of the hotel manager at prevailing rates.

Electric current

The electrical supply aboard the ship is 220v, 60Hz. Electrical outlets are standard European with two thick round pins. You may need a 220v/110v converter.

Gratuities

The customary gratuity to the ship's service personnel is made as a blanket contribution at the end of the voyage which is divided among the crew. Tipping is a very personal matter and the amount you wish to give is at your discretion. As a generally accepted guideline, we suggest US\$8 to US\$10 per person per day. It is better for the crew, if you can give them cash US Dollar.

Non-smoking policy

On board our vessels we have a non-smoking policy. It is

prohibited to smoke inside the ship. You can smoke in the designated smoking areas. Please respect the wishes of non-smokers.

Your physical condition

You must be in good general health and you should be able to walk several hours per day. The expedition is ship-based and physically not very demanding. Although we spend as much time as possible ashore, you are welcome to remain aboard the ship if you like. To join most excursions, you must be able to get up and down the steep gangway from the ship to the water level to board the Zodiacs. Staff will assist you in and out of the boats. This will become progressively easier with practice. Ashore it can be slippery and rocky. You are travelling in remote areas without access to sophisticated medical facilities, so you must not join this expedition if you have a life-threatening condition, or need daily medical treatment.



treatment.

Wild Earth Travel

*Small Ships, Big Adventures*

0800 945 3327 (within New Zealand) | +64 (0) 3 365 1355 | 1800 107 715 (within Australia)

[info@wildearth-travel.com](mailto:info@wildearth-travel.com) | [wildearth-travel.com](http://wildearth-travel.com)

# Wild Earth Travel

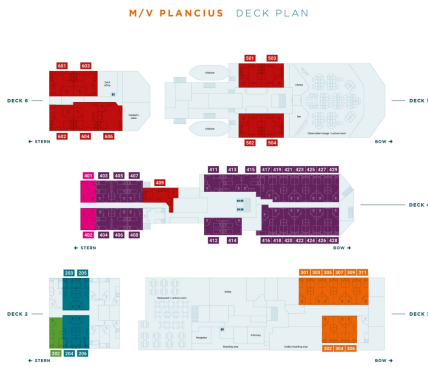
*Small Ships, Big Adventures*



[wildearth-travel.com](http://wildearth-travel.com)

[info@wildearth-travel.com](mailto:info@wildearth-travel.com)

## INSIDE YOUR SHIP

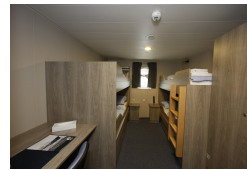


M/V PLACIUS DECK PLAN | OCEANWIDE EXPEDITIONS

ROOM TYPES	BEDS	SANITARY
<ul style="list-style-type: none"> <li>Superior</li> <li>Triple Porthole</li> <li>Twin Window</li> <li>Twin Window plus additional third bed</li> <li>Twin Window</li> <li>Quadruple Porthole</li> </ul>	<ul style="list-style-type: none"> <li>Upper/Ocean berth</li> <li>Double bed</li> <li>Lower berth</li> </ul>	<ul style="list-style-type: none"> <li>Toilet</li> <li>Bathroom</li> </ul>



Quadruple Porthole



Superior



Triple Porthole



Twin Deluxe



Twin Porthole



Twin Window



Wild Earth Travel  
*Small Ships, Big Adventures*

0800 945 3327 (within New Zealand) | +64 (0) 3 365 1355 | 1800 107 715 (within Australia)

[info@wildearth-travel.com](mailto:info@wildearth-travel.com) | [wildearth-travel.com](http://wildearth-travel.com)

# Wild Earth Travel

*Small Ships, Big Adventures*



[wildearth-travel.com](http://wildearth-travel.com)

[info@wildearth-travel.com](mailto:info@wildearth-travel.com)

## PRICING

### 01-Apr-2026 to 24-Apr-2026

Triple Porthole	9050 USD pp
Quadruple Porthole	9050 USD pp
Twin Porthole	11350 USD pp
Twin Window	11850 USD pp
Twin Deluxe	12850 USD pp
Superior	13750 USD pp

### 04-Apr-2027 to 27-Apr-2027

Quadruple Porthole	9400 USD pp
Triple Porthole	11800 USD pp
Twin Porthole	11800 USD pp
Twin Window	12300 USD pp
Twin Deluxe	13600 USD pp
Superior	14300 USD pp

Wild Earth Travel  
*Small Ships, Big Adventures*

0800 945 3327 (within New Zealand) | +64 (0) 3 365 1355 | 1800 107 715 (within Australia)

[info@wildearth-travel.com](mailto:info@wildearth-travel.com) | [wildearth-travel.com](http://wildearth-travel.com)