

# Wild Earth Travel

*Small Ships, Big Adventures*

**wildearth-travel.com**

**info@wildearth-travel.com**

## ANTARCTICA - BASECAMP VOYAGE

The Antarctic Peninsula Basecamp cruise offers you a myriad of ways to explore and enjoy the Antarctic Region. This expedition allows you to hike, snowshoe, kayak, go mountaineering, and even camp out under the Southern Polar skies. During our "Basecamp" departures, all offered activities (including camping, kayaking, snowshoe/hiking, mountaineering, photo workshop) as well as our standard included shore excursions and zodiac cruises) are free of charge.



### ITINERARY

#### Day 1: End of the world, start of a journey

Your voyage begins where the world drops off. Ushuaia, Argentina, reputed to be the southernmost city on the planet, is located on the far southern tip of South America. Starting in the afternoon, you embark from this small resort town on Tierra del Fuego, nicknamed "The End of the World," and sail the mountain-fringed Beagle Channel for the remainder of the evening.

#### Day 2 - 3: Path of the polar explorers

Over the next two days on the Drake Passage, you enjoy some of the same experiences encountered by the great polar explorers who first charted these regions: cool salt breezes, rolling seas, maybe even a fin whale spouting up sea spray. After passing the Antarctic Convergence - Antarctica's natural boundary, formed when north-flowing cold waters collide with warmer sub-Antarctic seas - you are in the circum-Antarctic upwelling zone. Not only does the marine life change, the avian life changes too. Wandering albatrosses, grey-headed albatrosses, black-browed albatrosses, light-mantled sooty albatrosses, cape pigeons, southern fulmars, Wilson's storm petrels,

Wild Earth Travel

*Small Ships, Big Adventures*

**0800 945 3327** (within New Zealand) | +64 (0) 3 365 1355 | **1800 107 715** (within Australia)

info@wildearth-travel.com | **wildearth-travel.com**



# Wild Earth Travel

*Small Ships, Big Adventures*

**wildearth-travel.com**

**info@wildearth-travel.com**

blue petrels, and Antarctic petrels are a few of the birds you might see.

## Day 4 - 10: Entering Antarctica

Gray stone peaks sketched with snow, towers of broken blue-white ice, and dramatically different wildlife below and above. You first pass the snow-capped Melchior Islands and Schollaert Channel, sailing between Brabant and Anvers Islands. Places you might visit includes: Neumayer Channel - The vessel may position itself here, launching its multiple basecamp activities from the protected waters around Wiencke Island. You can enjoy the splendors of this alpine environment at sea with Zodiac and kayaking trips, or if you're in the mood for a walk, there are possible snowshoe hikes and soft-climb mountaineering options farther inland. Naturally, favorable weather conditions determine the possible activities. Port Lockroy - After sailing through the Neumayer Channel, you may get a chance to visit the former British research station - now a museum and post office - of Port Lockroy on Goudier Island. You may also be able to partake in activities around Jougla Point, meeting gentoo penguins and blue-eyed shags. There are great opportunities also for kayaking and camping here, and when conditions are right, you can even snowshoe around the shore. Pleneau & Petermann Islands - If the ice allows it, you can sail through the Lemaire Channel in search of Adelie penguins and blue-eyed shags. There's also a good chance you'll encounter humpback and minke whales here, as well as leopard seals. Kayaking, glacier walks, and more ambitious mountaineering trips are the potential activities of this location. Neko Harbour - An epic landscape of mammoth glaciers and endless wind-carved snow, Neko Harbour offers opportunities for a Zodiac cruise and landing that afford the closest views of the surrounding alpine peaks. Paradise Bay - You have the chance to make camp here like a true polar explorer (but with a better tent), enjoying a supreme overnight Antarctic adventure. Errera Channel - Possible sites in this area include Danco Island and Cuverville Island, but also the lesser known (though equally picturesque) Orne Island and Georges Point on Ronge Island. On your last day of near-shore activities, you pass the Melchior Islands toward the open sea. Keep a sharp lookout for humpback whales in Dallmann Bay. You might also shoot for Half Moon Island, in the South Shetlands, with further chances for activities. Conditions on the Drake Passage determine the exact time of departure.

## Day 11 - 12: Familiar seas, familiar friends

Your return voyage is far from lonely. While crossing the Drake, you're again greeted by the vast array of seabirds remembered from the passage south. But they seem a little more familiar to you now, and you to them.

## Day 13: There and back again

Every adventure, no matter how grand, must eventually come to an end. It's now time to disembark in Ushuaia, but with memories that will accompany you wherever your next adventure lies.

### Please note:

All itineraries are for guidance only. Programs may vary depending on local ice, weather, and wildlife conditions. The on-board expedition leader will determine the final itinerary. Flexibility is paramount for expedition cruises.

# Wild Earth Travel

*Small Ships, Big Adventures*

**wildearth-travel.com**

**info@wildearth-travel.com**

## YOUR SHIP: HONDIUS

<b>YOUR SHIP:</b>	<b>Hondius</b>
<b>VESSEL TYPE:</b>	<b>Polar Class Expedition Ship</b>
<b>LENGTH:</b>	<b>107.6 metres</b>
<b>PASSENGER CAPACITY:</b>	<b>170</b>
<b>BUILT/REFURBISHED:</b>	<b>2019</b>

and minimal time at sea.

Hondius is a purpose-built Polar Class 6 expedition ship designed to operate safely and efficiently in the Arctic and Antarctica. Its ice-strengthened hull, advanced navigation systems, and powerful twin engines support fast repositioning and reliable performance in challenging polar conditions. Interiors follow a clean, mid-century modern style, with accommodation for 170 guests across a wide range of cabin types, from suites with balconies to porthole cabins for groups. Public spaces include an expansive observation lounge and a dedicated lecture room used for workshops and briefings, reinforcing the vessel's focus on education and discovery rather than traditional cruise entertainment.

The ship is engineered for low environmental impact, using modern power management, LED lighting, and biodegradable materials. Shore access is prioritised through two gangways, an indoor Zodiac boarding area, and a large fleet of rigid-hull inflatables that support quick landings and near-shore exploration. With 70 crew, guides, and staff on board, Hondius offers the comfort of a well-run hotel while maintaining the flexibility required for wildlife encounters, shifting ice, and rapidly changing weather, ensuring maximum time in the field



Wild Earth Travel

*Small Ships, Big Adventures*

**0800 945 3327** (within New Zealand) | +64 (0) 3 365 1355 | **1800 107 715** (within Australia)

info@wildearth-travel.com | **wildearth-travel.com**



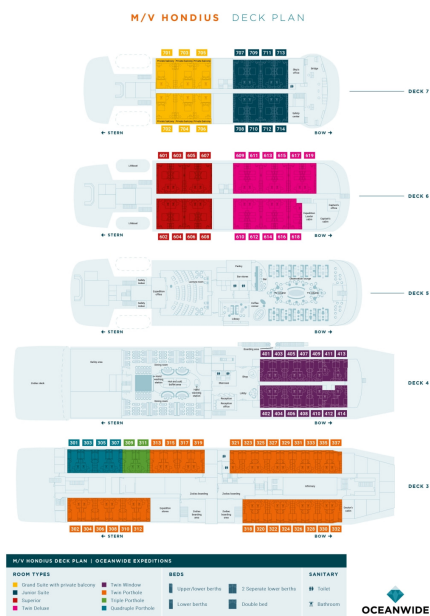
# Wild Earth Travel

*Small Ships, Big Adventures*

[wildearth-travel.com](http://wildearth-travel.com)

[info@wildearth-travel.com](mailto:info@wildearth-travel.com)

## INSIDE YOUR SHIP



Grand Suite with Private Balcony



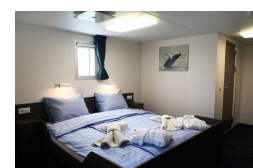
Junior Suite



Quadruple Porthole



Superior



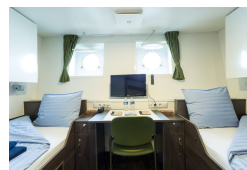
Triple Porthole



Twin Deluxe



Twin Porthole



Twin Window



Wild Earth Travel

*Small Ships, Big Adventures*

0800 945 3327 (within New Zealand) | +64 (0) 3 365 1355 | 1800 107 715 (within Australia)

[info@wildearth-travel.com](mailto:info@wildearth-travel.com) | [wildearth-travel.com](http://wildearth-travel.com)

# Wild Earth Travel

*Small Ships, Big Adventures*

**wildearth-travel.com**

**info@wildearth-travel.com**

## PRICING

### 03-Nov-2026 to 15-Nov-2026

Quadruple Porthole	10150 USD pp
Triple Porthole	12500 USD pp
Twin Porthole	12500 USD pp
Twin Window	13150 USD pp
Twin Deluxe	14350 USD pp
Superior	15050 USD pp

### 23-Nov-2026 to 05-Dec-2026

Quadruple Porthole	10150 USD pp
Triple Porthole	11400 USD pp
Twin Porthole	12500 USD pp
Twin Window	13150 USD pp
Twin Deluxe	14350 USD pp
Superior	15050 USD pp
Junior Suite	16050 USD pp
Grand Suite with Private Balcony	17950 USD pp

### 15-Dec-2026 to 27-Dec-2026

Quadruple Porthole	10150 USD pp
Triple Porthole	12500 USD pp
Twin Porthole	12500 USD pp
Twin Window	13150 USD pp
Twin Deluxe	14350 USD pp
Superior	15050 USD pp

### 08-Jan-2027 to 20-Jan-2027

Quadruple Porthole	11600 USD pp
Triple Porthole	14250 USD pp
Twin Porthole	14250 USD pp
Twin Window	14900 USD pp
Twin Deluxe	16400 USD pp
Superior	17250 USD pp

### 18-Feb-2027 to 02-Mar-2027

Quadruple Porthole	11600 USD pp
Triple Porthole	14250 USD pp
Twin Porthole	14250 USD pp
Twin Window	14900 USD pp
Twin Deluxe	16400 USD pp
Superior	17250 USD pp



# Wild Earth Travel

*Small Ships, Big Adventures*



**wildearth-travel.com**

**info@wildearth-travel.com**

## PRICING

### 25-Nov-2027 to 07-Dec-2027

Quadruple Porthole	11100 USD pp
Triple Porthole	12500 USD pp
Twin Porthole	13650 USD pp
Twin Window	14300 USD pp
Twin Deluxe	15800 USD pp
Superior	16400 USD pp
Junior Suite	17450 USD pp
Grand Suite with Private Balcony	19600 USD pp

### 07-Dec-2027 to 19-Dec-2027

Quadruple Porthole	11100 USD pp
Triple Porthole	12500 USD pp
Twin Porthole	13650 USD pp
Twin Window	14300 USD pp
Twin Deluxe	15800 USD pp
Superior	16400 USD pp
Junior Suite	17450 USD pp
Grand Suite with Private Balcony	19600 USD pp

### 30-Dec-2027 to 11-Jan-2028

Quadruple Porthole	12650 USD pp
Triple Porthole	14250 USD pp
Twin Porthole	15500 USD pp
Twin Window	16250 USD pp
Twin Deluxe	18100 USD pp
Superior	18800 USD pp

### 11-Jan-2028 to 23-Jan-2028

Quadruple Porthole	12650 USD pp
Triple Porthole	14250 USD pp
Twin Porthole	15500 USD pp
Twin Window	16250 USD pp
Twin Deluxe	18100 USD pp
Superior	18800 USD pp

### 24-Jan-2028 to 05-Feb-2028

Quadruple Porthole	12650 USD pp
Triple Porthole	14250 USD pp
Twin Porthole	15500 USD pp
Twin Window	16250 USD pp
Twin Deluxe	18100 USD pp
Superior	18800 USD pp

**Wild Earth Travel**  
*Small Ships, Big Adventures*

**0800 945 3327** (within New Zealand) | +64 (0) 3 365 1355 | **1800 107 715** (within Australia)

info@wildearth-travel.com | wildearth-travel.com