

Wild Earth Travel

Small Ships, Big Adventures

wildearth-travel.com

info@wildearth-travel.com

ANTARCTICA & PATAGONIA EXPEDITION CRUISE

Wonders of Patagonia Fjords

From Valparaíso, you'll sail to rustic Castro with its colorful palafitos houses. From there, weave through the Chilean fjords and scenic waterways of Patagonia that offer stunning glacial views and abundant wildlife sightings. Along the way, we'll visit small, isolated communities, offering a glimpse into life in a remote corner of the world.

Icscapes and penguins

Guided by your Expedition Team, you'll spend four incredible days exploring Antarctica's immense, pristine icescapes. Springtime is courting season and you'll be able to observe penguins mating. There's no fixed programme - we adapt our itinerary to take every opportunity to get closer to nature and enjoy unique experiences on ice cruises and landings.



ITINERARY

Day 1 Valparaíso, a UNESCO gem

Your Antarctica and Patagonia expedition cruise begins in vibrant Valparaíso. Known as the 'Jewel of the Pacific', it's built on steep hillsides overlooking the ocean and you'll love discovering this friendly UNESCO-listed city.

Filled with enticing scents and sounds, it's an exhilarating maze of alleyways, colourful houses and mercados packed with local produce - take it all in on a funicular ride up to Cerro Alegre and Concepcion.

Day 2-3 Preparing for adventure

Wild Earth Travel

Small Ships, Big Adventures

0800 945 3327 (within New Zealand) | +64 (0) 3 365 1355 | **1800 107 715** (within Australia)

info@wildearth-travel.com | **wildearth-travel.com**

Wild Earth Travel

Small Ships, Big Adventures

wildearth-travel.com

info@wildearth-travel.com

Get into expedition mode

Over the next two days at sea, you'll learn more about the wonders we'll encounter during our trip.

Members of the Expedition Team will be experts in anything from oceanography and geology to ornithology and history. Drop in on their fascinating lectures, as well as hands-on presentations in the Science Center.

Grab your binoculars and scan for rare wandering albatrosses and petrels. Make the most of your onboard facilities, and spoil yourself with a spa treatment in the wellness area, or enjoy the infinity pool, hot tubs, running track, sauna and gym.

Day 4 Castro's Chilotan charm

See stilt houses and historic churches

Set among the lush vegetation of Chiloe Island, Castro is Chile's third oldest city. It's home to two UNESCO World Heritage Sites, namely Iglesia San Francisco and Iglesia Nuestra Señora de Gracia de Nercon.

From various vantage points you can get great views of the city's colourful palafitos, which are stilt houses situated along the waterfront. For some culture, head to the Regional Museum and the Museum of Modern Art.

Bring your binoculars as Chiloe is an important habitat for bird species such as Green-backed Firecrests and Chilean Flamingos, along with penguins, Black-necked Swans, Ringed Kingfishers and Silvery Grebes.

Day 5 The waters of Patagonia

Witness unforgettable seascapes

Your expedition cruise continues south through the waters of Patagonia. The seas here are captivating, with a whole palette of shades of blue, from the brightest aquamarine to the deepest midnight hues.

As we sail, there's a good chance you'll see whales, seabirds, seals and more. Take in the scenery from the panoramic sauna or on-deck hot tubs and infinity

pool, or just enjoy the onboard cuisine, before relaxing in the Explorer Lounge & Bar.

Your Expedition Team will be on hand with fascinating lectures on a range of topics, and our onboard photographer can help with tips on expedition photography.

Day 6 Charm of Caleta Tortel

Receive a warm welcome in Caleta Tortel

We continue off the well-trodden path to visit isolated Caleta Tortel. Lying at the mouth of Rio Baker, Chile's largest river, this charming village is home to around 500 inhabitants.

Instead of streets, a maze of boardwalks connects the close-knit community, spreading over the water and around the mountain base. If conditions permit, you'll be able to investigate the milky blue waters here by kayak.

While exploring the village, you'll come across locals selling handicrafts and you may even be treated to a performance by folk dancers.

Day 7-9 Expedition days

Wild Patagonia: Fjords, Culture and Glaciers

We continue our adventure deep into the Chilean fjords with fantastic opportunities for scenic cruising aboard the ship and in our small expedition boats too. Adventure awaits in this wild and stunning landscape!

As we sail through the maze of the Patagonian waterways, depending on tidal conditions, we hope to visit Puerto Eden, an enchanting village only accessible by sea. The 250-strong community here are some of the last remaining members of the Indigenous Kawesqar people, offering a fascinating insight into Patagonian culture.

Continuing further south, we will cruise the majestic fjords, taking in the incredible scenery along the way. Enjoy the fresh sea air as we glide past untouched isles, glaciers and green mountains, looking out for marine wildlife who often swim alongside the ship.

Our exploration continues within Alberto de Agostini National Park, all the way

Wild Earth Travel

Small Ships, Big Adventures

0800 945 3327 (within New Zealand) | +64 (0) 3 365 1355 | **1800 107 715** (within Australia)

info@wildearth-travel.com | **wildearth-travel.com**



Wild Earth Travel

Small Ships, Big Adventures

wildearth-travel.com

info@wildearth-travel.com

up to glaciers such as Garibaldi or Pia. Here, the Andes tumble into the Pacific and great glaciers calve ice into the beautiful fjords. If conditions allow, we'll reach the glacier at the head of the fjord for some of the most breathtaking glacial scenery.

Day 10-11 Sailing the Drake Passage

Get set for Antarctica

Over the next two days, we'll navigate the legendary Drake Passage towards Antarctica. En route, you'll find out what lies ahead and how to make your visit as safe and as sustainable as possible.

In the Science Centre, the Expedition Team will give lectures about Antarctica's fauna, history and geology, as well as the impact of climate change and plastic pollution. You can also get involved in our Citizen Science projects.

Day 12-15 Antarctica: another world

Experience Antarctica in all its natural majesty

Nothing prepares you for your first sight of Antarctica's immense, frozen beauty. Surrounded by looming glaciers, and icebergs the size of floating cathedrals, Antarctica will fill you with wonder. Perhaps the most surprising part of Antarctica is the silence. It's a stillness that's broken every so often by the locals - the wildlife.

Here, nature is king, and we are mere observers. Our experienced Captain will continually monitor conditions to create the best possible itinerary for your adventure. Rest assured, each day will offer something different and thrilling.

You'll join the Expedition Team on landings and ice-cruises and may even get a chance to go kayaking among the icebergs.

Back on board, the Expedition Team will continue their lectures, helping you grow in your insights of the frozen continent. Over five magical days, you'll experience this amazing world in a way that will stay with you for a lifetime.

Day 16-17 Sailing towards Ushuaia

Relax and learn as we cruise to Argentina

After incredible days in Antarctica, we sail back across the Drake Passage towards warmer weather in Argentina, giving you an opportunity to enjoy the onboard facilities.

You can take part in art workshops, or perhaps enjoy a treatment in the spa. Get active in the gym or admire the views from the panoramic sauna. Relax in the outdoor pool or soak in the on-deck hot tubs.

Visit the Science Centre and find out more about the things you've seen or use the time to sort through your photos. Enlist the help of the Expedition Team to help identify species captured in your photos.

Day 18 Ushuaia and Buenos Aires

From Ushuaia to Buenos Aires

Your expedition cruise ends in Ushuaia, the main city in Tierra del Fuego, Argentina's southernmost province. From here, you'll take a flight back to Buenos Aires, but it doesn't have to be the end of your adventure.

Why not join one of our optional Post-Programmes before heading home.

Please note:

Itineraries are subject to change.



Wild Earth Travel

Small Ships, Big Adventures

wildearth-travel.com

info@wildearth-travel.com

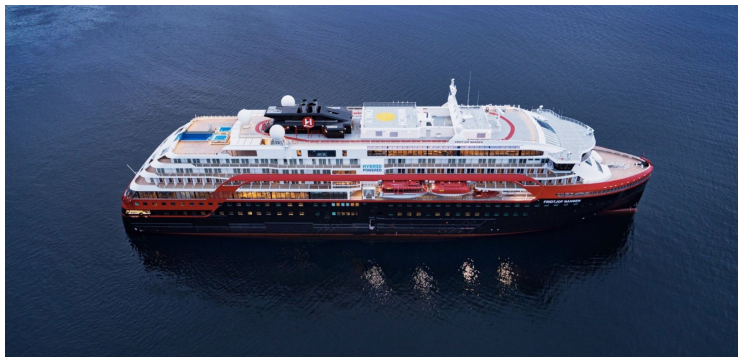
YOUR SHIP: FRIDTJOF NANSEN

YOUR SHIP:	Fridtjof Nansen
VESSEL TYPE:	Expedition
LENGTH:	140 m
PASSENGER CAPACITY:	530
BUILT/REFURBISHED:	2020

MS Fridtjof Nansen, launched in 2020 and built by Kleven Yards in Norway, is a next-generation expedition ship designed for polar exploration. Accommodating 490 guests, the 140-metre vessel combines robust expedition capabilities with luxury, featuring Scandinavian-inspired interiors with natural materials like oak, birch, granite, and wool. All cabins are outside-facing, with 50% offering private balconies and select aft suites including outdoor hot tubs. Guests can choose from a range of accommodation types, from Arctic Superior and Polar Outside cabins to spacious Expedition and corner suites, many with private balconies, hot tubs, and seating areas. Each suite is equipped with ensuite bathrooms, toiletries, TVs, safes, coffee and tea facilities, and turn-down service, ensuring comfort and convenience during the voyage.

The ship offers extensive amenities, including three restaurants serving Nordic-inspired and international cuisine, a pool bar, and a takeaway service. Public areas feature the Explorer Lounge & Bar, a gym and wellness center with spa treatments, and aft hot tubs and an infinity pool. The onboard Science Center provides interactive educational experiences, lectures, and workshops led by a hand-picked Expedition Team of

experts. With daily excursions, state-of-the-art safety and sustainability features, and inclusive offerings covering meals, drinks, and activities, MS Fridtjof Nansen delivers a high-comfort, immersive expedition experience across some of the world's most spectacular destinations.



stinations.

Wild Earth Travel
Small Ships, Big Adventures

0800 945 3327 (within New Zealand) | +64 (0) 3 365 1355 | **1800 107 715** (within Australia)

info@wildearth-travel.com | **wildearth-travel.com**

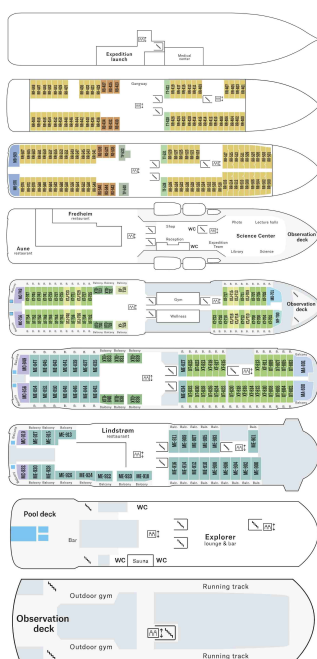
Wild Earth Travel

Small Ships, Big Adventures

wildearth-travel.com

info@wildearth-travel.com

INSIDE YOUR SHIP



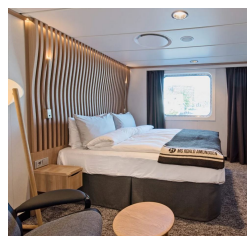
Arctic Superior. From



Expedition Suite. From



Polar Outside. From



Wild Earth Travel
Small Ships, Big Adventures

0800 945 3327 (within New Zealand) | +64 (0) 3 365 1355 | 1800 107 715 (within Australia)

info@wildearth-travel.com | wildearth-travel.com



Wild Earth Travel

Small Ships, Big Adventures



wildearth-travel.com

info@wildearth-travel.com

PRICING

26-Oct-2027 to 12-Nov-2027

Polar Outside. From	17589 AUD pp
Arctic Superior. From	19523 AUD pp
XT Outside cabin with balcony	23396 AUD pp
Expedition Suite. From	26031 AUD pp

Optional extras & upgrades

Optional tours and excursions available. Please contact us for more details.



Wild Earth Travel

Small Ships, Big Adventures

0800 945 3327 (within New Zealand) | +64 (0) 3 365 1355 | **1800 107 715** (within Australia)

info@wildearth-travel.com | **wildearth-travel.com**