

# Wild Earth Travel

*Small Ships, Big Adventures*

**wildearth-travel.com**

**info@wildearth-travel.com**

## ANTARCTICA & FALKLANDS EXPEDITION ABOARD FRIDTJOF NANSEN

Join us on a late-summer expedition to experience unique landscapes, wildlife and amazing sunsets in the white continent, the Falkland Islands and Puerto Madryn. Wilderness and wildlife. You'll be in Antarctica for five days in its late summer months. Beautiful sunsets and sunrises will paint the ice and snow in shades of gold, orange and pink, accentuated by snow algae in bloom. This is prime time for whale-watching, and you'll get to see penguins in their final stage of moulting. The Expedition Team will host lectures, take you on landings and on sea activities to really discover the frozen continent. We don't have a set itinerary here, as Antarctica is known for changeable weather and sea ice. Instead, we'll adjust our plans according to the elements to take you to the best places available. The Falkland Islands and Patagonia. After experiencing Antarctica and returning via the Drake Passage, you can contrast its icy wilderness with three days in the green and grassy Falklands. Visit the charming capital Stanley with its English red busses, restaurants and charming pubs, and discover the variety of wildlife living on the more remote parts of the islands. Then, it's on to warm and inviting Puerto Madryn for its beaches and nearby nature reserve before returning to Buenos Aires where your expedition cruise ends.



### ITINERARY

#### DAY 1 BUENOS AIRES Renaissance of romance

If you thought romance was long dead, you've yet to experience Buenos Aires. The sophisticated yet down-to-earth Argentine capital thrives on its strong traditions: proud football fans, cultured theatre scene and seductive tango. During the day, wander past French and Italianate buildings in Recoleta, finding shade from the summer sun in the resplendent plazas and parks of Palermo where fleets of parrots and songbirds roost. At night, feast on steak in San Telmo before heading to a local bar, club or confiteria on Avenida

Wild Earth Travel

*Small Ships, Big Adventures*

**0800 945 3327** (within New Zealand) | +64 (0) 3 365 1355 | **1800 107 715** (within Australia)

info@wildearth-travel.com | **wildearth-travel.com**



# Wild Earth Travel

*Small Ships, Big Adventures*

**wildearth-travel.com**

**info@wildearth-travel.com**

Corrientes for a late-night milonga fuelled by traditional tango dancing. By adding a few days to your vacation, you can also join an optional Pre-Programme to explore wild Patagonia.

## DAY 2 BUENOS AIRES/USHUAIA Meeting the ship

Estimated time of departure is 7:00 PM To get you to your ship as soon as possible, your plane leaves Buenos Aires early in the morning, taking you to the southern port city of Ushuaia on the shores of the Beagle Channel. From the plane, you might be granted views over Lago Fagnano and of snow-capped Monte Darwin in Alberto de Agostini National Park to the west. Hybrid-powered expedition ship MS Fridtjof Nansen will be here waiting to start your adventure together. You'll get to know the ship well over the next few weeks and fondly see it as your comfortable home away from home. After boarding, you'll attend a meeting with the Expedition Team who will take you through some key health and safety principles. Enjoy a welcome dinner, your first of many delicious meals on board, before finishing the day with a stroll on deck looking for stars up above.

## DAY 3-4 DRAKE PASSAGE Continental crossing

Spending two days sailing the Drake Passage may seem like a test of your patience but believe us when we say the time will fly by. Not only are there albatross, petrels, humpback, and fin whales to watch for, but our expert Expedition Team will also do what they do best: prepare you for the adventures ahead. You'll attend lectures from the Expedition Team to learn about the history, environments and challenges of the places we plan to visit. You will learn what it takes to be an Antarctic ambassador and how to explore the frozen habitats safely and sustainably while observing IAATO regulations. Our special rubber boots for landings are just one of the precautions we take. The Expedition Team will also introduce Citizen Science programmes which will help you understand more about intricate ecosystems while contributing to current scientific research. Meanwhile, our onboard photographer may be sharing some useful tips on how to take the best pictures. If your brain feels like it's ready to burst, joining some included activities like art classes can be a great way to relax. Or maybe you want to blow off some steam in the sauna. Keep fit in the indoor gym and put on your running shoes to test the 150-metre-long outdoor running track. Say goodbye to any lingering stress with therapies in the Wellness Area or maybe enjoy a healthy snack in one of our three onboard restaurants.

## DAY 5-9 ANTARCTICA A world of ice and wildlife

Welcome to Antarctica. This vast continent is almost entirely ice and snow. Ice shelves are the size of countries and icebergs tower over our ship as big as buildings. Glaciers cascade down through the mountains, crumpling towards the shoreline where they crumble ice into the water. When we arrive here, summer is coming to an end, and you can look forward to seeing these landscapes beautifully illuminated by breathtaking sunsets. This is also the best time of year to see penguins in their final stage of moulting and to spot different species of whales as they gorge on krill. During your five days here, we plan to visit several possible sites in the South Shetlands and on the Antarctic Peninsula, based on when and where conditions are at their best. But this is no passive sail-by. The Expedition Team has big plans for you, as they will take you on ice-cruises and on landings ashore, bringing you to historic and scenic sites and to penguin colonies at a respectful distance. You may even get the chance to go kayaking with them among the icebergs, in an optional activity. They will also continue their lecture programme and you'll likely also be busy cataloguing the various wildlife you spot as part of a Citizen Science project. The thing about expedition cruising is that the itinerary is not set in stone, allowing us to be flexible and adaptable, doing whatever is best at each specific point in the voyage. Having sailed these waters for so many years, we know all the possible landing sites and when we should go to maximise the experience for everyone.

## DAY 10-11 THE DRAKE PASSAGE Northbound

Join the Expedition Team as they continue their lecture programme covering topics such as the history of the great explorers, marine biology, wildlife, oceanography and climate change. You might also get to spend time examining seawater samples taken in Antarctica, allowing you to study another kind of wildlife at the cellular level. Scout for wildlife from deck, relax in the Explorer Lounge & Bar or just watch the scenery glide by from the outdoor hot tubs or heated infinity pool. As we get closer to the Falklands, the ship is usually followed by different bird species, such as gulls, fulmars, petrels and even albatross.

## DAY 12-14 FALKLAND ISLANDS Pubs and penguins

With green grass, white sands and farms, the Falklands are a world away from the barren white wilderness of Antarctica. Similar to Antarctica though, we will

# Wild Earth Travel

*Small Ships, Big Adventures*

**wildearth-travel.com**

**info@wildearth-travel.com**

spend our three days exploring the islands with no exact itinerary, allowing the Captain and Expedition Team to pick out the best spots for each day based on the conditions at the time. This is a paradise for birds, like ducks, geese, albatrosses, caracaras and wrens, not to mention the four different species of penguins to found here - king, rockhopper, Magellanic and gentoo. The latter normally hang out in large colonies around the islands, which you might be able to spot from the ship or even visit during one of our landings. Stanley, the capital of the archipelago, is on the island of East Falkland and easy for the ship to access. Small enough to be explored on foot, it comes complete with familiar English red buses, inviting restaurants and pubs full of friendly locals.

## DAY 15 AT SEA Take a moment

As we set out for another day at sea, there are new lectures and presentations from the Expedition Team to listen in on. Maybe you want to spend some time going through your pictures from Antarctica and the Falklands, or exchange experiences with your fellow travellers. And if you haven't already, looking at the scenery and watching for wildlife from the scenic sauna isn't a bad way to spend the day. Not bad at all...

## DAY 16 PUERTO MADRYN, ARGENTINA - DOCKED - HALF DAY

### World Heritage wildlife haven

Puerto Madryn was founded by Welsh immigrants in 1865, and late summer temperatures might make you want to visit the inviting beaches in the area. Puerto Madryn is also the gateway to dramatic Valdes Peninsula, and we hope to invite you on an optional excursion here to explore a stunning nature reserve that has been declared a UNESCO World Heritage site. Here, you will get the chance to see marine mammals like fur seals, elephant seals, sea lions, and whales like the Southern right whale, baleen whale and orcas. There are also at least 180 species of birds living on the peninsula, so get those binoculars out and start looking for new favourite birds. If birds aren't really your cup of tea, this is also a nice place to walking around, eat and shop for local arts and crafts.

## DAY 17-18 AT SEA Final sailing days

Your adventurous expedition cruise is coming to an end, and you can tick Antarctica, the Falklands and Puerto Madryn off your bucket list. You will feel the temperature rise as we make our way north, so head out onto the outer

decks and enjoy some sun by the infinity pool or in the outdoor gym. Take the opportunity to spend time with your new friends in the Expedition Team too. They are never short of fascinating facts and interesting stories with which to regale you with. Enjoy a farewell dinner on the last evening and watch the stars mirrored in the water beneath the ship one last time before going to bed.

## DAY 19 BUENOS AIRES Back where we began

Estimated time of arrival is 8:00 AM Sadly, all good things must come to an end, and the same goes for your expedition cruise. It has been 19 days since the last time you were in Buenos Aires, but having experienced so much during that time, it will probably feel like it's been much longer. This is your second chance to get a feel for the exotic Latin city which seems to pulsate to the rhythm of tango. If you don't feel like dancing, you can also enjoy an optional post-programme to the famous Iguazu Falls, one of the largest and most impressive waterfalls in the world. Whether you are carrying on your adventure or headed for home, we bid you farewell and wish you many more adventures in the years to come. Who knows, maybe we'll see you on one of our expeditions to other destinations we explore, or perhaps Antarctica we tempt you back one more time...

### Please Note:

Itineraries are subject to change.





# Wild Earth Travel

*Small Ships, Big Adventures*

**wildearth-travel.com**

**info@wildearth-travel.com**

## YOUR SHIP: FRIDTJOF NANSEN

<b>YOUR SHIP:</b>	<b>Fridtjof Nansen</b>
<b>VESSEL TYPE:</b>	<b>Expedition</b>
<b>LENGTH:</b>	<b>140 m</b>
<b>PASSENGER CAPACITY:</b>	<b>530</b>
<b>BUILT/REFURBISHED:</b>	<b>2020</b>

MS Fridtjof Nansen is the latest addition to Hurtigruten's fleet of custom built ships - and the next generation expedition ship. She will explore some of the most spectacular corners of the globe. Featuring Hurtigruten's revolutionary battery hybrid powered propulsion system, MS Fridtjof Nansen will be a near identical twin to her sister ship MS Roald Amundsen. Combining state of the art technology and premium on board experience with Hurtigruten's 125 years of experience and unparalleled destinations, the two Norwegian built ships introduces the next generation of adventure travel.

### Cabins and public areas

The stunning scenery will be reflected in a rich and comfortable interior design. Scandinavian materials from nature, such as granite, oak, birch and wool will be used to create relaxed and stylish cabins and public areas. All cabins are outside, 50 % will have private balconies, aft suites will feature private outdoor hot tubs with spectacular views.

### Science Center

The core of the onboard experience is the Nansen Science Center, an edutainment venue to guests and crew meet to create a deeper understanding of the areas we explore. Nansen

Science Center will also be the on board HQ for the Expedition Team.

### Restaurants

MS Fridtjof Nansen's three restaurants will host a variety of dining options, with menus drawn from our rich Norwegian and Nordic tradition, as well as international cuisine and local inspiration. Whether enjoying your meal at Aune Main Dining, Fredheim - the informal international meeting place, or the specialty restaurant Lindstrøm, you will indulge in low key yet refined, modern Norwegian Nordic cooking - where our honest and delicious cuisine reflects our destinations.

After a day of exploring new destinations, guests can relax and rejuvenate in the elegant Explorer Lounge, a large gym and Wellness center, or enjoy the scenery and sunsets on the massive in- and outdoor Observation Decks with the aft infinity pool and hot tubs as one of the highlights.

### Everything you need for an expedition cruise

Each expedition voyage is accompanied by a hand-picked team of specialists and modern-day explorers. Highly experienced, passionate and knowledgeable, the Expedition Team will be your guides and guardians on your voyage of exploration, instructing you on safety, sustainability and science. MS Fridtjof Nansen will feature a variety of custom built expedition equipment, including kayaks, a fleet of Blueeye underwater drones and Expedition Boats for safe landings in remote areas.

### In the footsteps of a great explorer

The newest addition to our fleet will honor the heritage of her namesake - the Norwegian explorer, scientist, humanitarian and Nobel Peace Prize laureate Fridtjof Nansen. Known for his



Wild Earth Travel  
*Small Ships, Big Adventures*

**0800 945 3327** (within New Zealand) | +64 (0) 3 365 1355 | **1800 107 715** (within Australia)

info@wildearth-travel.com | **wildearth-travel.com**



# Wild Earth Travel

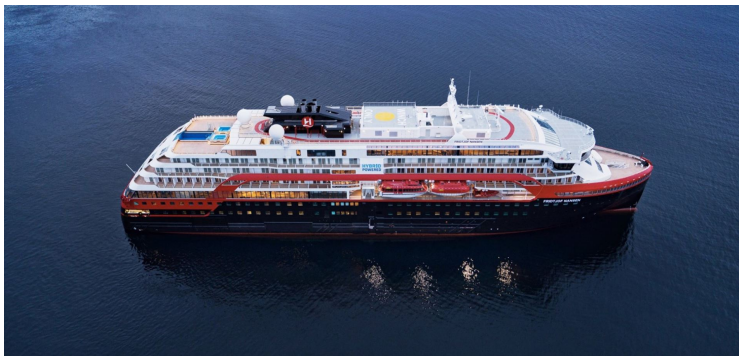
*Small Ships, Big Adventures*



**wildearth-travel.com**

**info@wildearth-travel.com**

innovations in Arctic expeditions, Nansen led the first crossing of Greenland on cross-country skis. He is perhaps most famous for his attempt to reach the geographical North Pole during the Fram Expedition (1893-1896). Interestingly, after Nansen's Fram expedition, the ship was passed on to another great explorer who secretly planned an expedition to the South Pole - Roald Amundsen.



d Amundsen.



Wild Earth Travel

*Small Ships, Big Adventures*

**0800 945 3327** (within New Zealand) | +64 (0) 3 365 1355 | **1800 107 715** (within Australia)

info@wildearth-travel.com | **wildearth-travel.com**

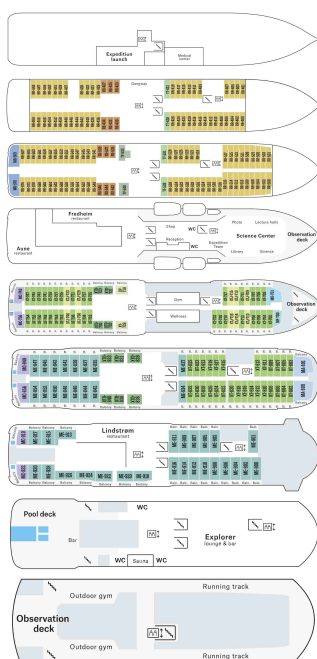
# Wild Earth Travel

*Small Ships, Big Adventures*

[wildearth-travel.com](http://wildearth-travel.com)

[info@wildearth-travel.com](mailto:info@wildearth-travel.com)

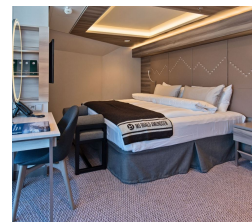
## INSIDE YOUR SHIP



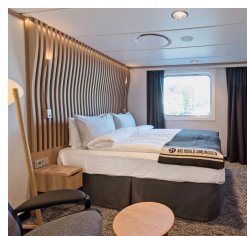
Arctic Superior. From



Expedition Suite. From



Polar Outside. From



Wild Earth Travel  
*Small Ships, Big Adventures*

0800 945 3327 (within New Zealand) | +64 (0) 3 365 1355 | 1800 107 715 (within Australia)

[info@wildearth-travel.com](mailto:info@wildearth-travel.com) | [wildearth-travel.com](http://wildearth-travel.com)





# Wild Earth Travel

*Small Ships, Big Adventures*



**wildearth-travel.com**

**info@wildearth-travel.com**

## PRICING

### 19-Mar-2026 to 06-Apr-2026

Polar Outside. From	16415 AUD pp
Arctic Superior. From	18058 AUD pp
Expedition Suite. From	23587 AUD pp

### 19-Mar-2027 to 06-Apr-2027

Polar Outside. From	22463 AUD pp
Arctic Superior. From	24749 AUD pp
Expedition Suite. From	32441 AUD pp

### Optional extras & upgrades

Optional tours and excursions available. Please contact us for more details.

**Wild Earth Travel**  
*Small Ships, Big Adventures*

**0800 945 3327** (within New Zealand) | +64 (0) 3 365 1355 | **1800 107 715** (within Australia)

info@wildearth-travel.com | **wildearth-travel.com**