

# Wild Earth Travel

*Small Ships, Big Adventures*

[wildearth-travel.com](http://wildearth-travel.com)

[info@wildearth-travel.com](mailto:info@wildearth-travel.com)

## ANTARCTICA CLASSIC - 11 DAY CRUISE FROM USHUAIA

Vivid emerald, violet tints, intense blue and crimson light--the Antarctic Peninsula is anything but a world of white desolation. Join us on a true adventure to a world of immense scale and visual splendour. Passing huge icebergs in the flat calm of a polar morning will reshape the way you look at your world. Encounter huge whales, enormous rookeries of penguins and stunning landscapes few have ever witnessed. This 11-day expedition will introduce you to the magic of the South Shetland Islands and the Antarctic Peninsula.



### ITINERARY

#### Day 1 Ushuaia

Arrive in Ushuaia at any time. Enjoy the sights and sounds of the world's most southerly city. Arrival transfer is included. There will be a welcome desk in the lobby of the start hotel that will provide more specific information on the MS Expedition.

#### Day 2 Ushuaia/Drake Passage

Wild Earth Travel

*Small Ships, Big Adventures*

0800 945 3327 (within New Zealand) | +64 (0) 3 365 1355 | 1800 107 715 (within Australia)

[info@wildearth-travel.com](mailto:info@wildearth-travel.com) | [wildearth-travel.com](http://wildearth-travel.com)



# Wild Earth Travel

*Small Ships, Big Adventures*



[wildearth-travel.com](http://wildearth-travel.com)

[info@wildearth-travel.com](mailto:info@wildearth-travel.com)

Enjoy a free morning in Ushuaia. Do any last minute shopping, explore the town or the surrounding countryside. Embarkation on the MS Expedition begins in the afternoon at the port in Ushuaia. Enjoy the evening sailing through the Beagle Channel. Expedition travel can be full of surprises! While it is our intention of adhere to the itinerary described below, there is a certain amount of flexibility built into the itinerary and on occasion it may be necessary, or desirable to make alterations. On the first day onboard, the Expedition Leader will give an expedition overview outlining what the specific plans are for the trip.

### Days 3-4 Drake Passage/South Shetland Islands

The adventure begins with a 800km (497mi) crossing of the passage named in honour of the 16th-century English sea captain and privateer Sir Francis Drake. Take in daily lectures from the expedition team and keep an eye out for the first sightings of icebergs, whales and albatross following in the Expedition's wake. The M/S Expedition is at home in this part of the Southern Ocean, known for the unimpeded never ending fetch of the winds that encircle the Antarctic. As the Expedition crosses the passage there will be time to become acquainted with the ship and frequent the common areas that include the lounge, dining hall, library and lecture hall where we meet our guides, ship's crew and expedition staff. Begin lectures and information sessions to learn the extraordinary human and natural history of the Antarctic region

### Days 5-8 South Shetland Islands/Antarctic Peninsula

Experience some of the most unique wildlife viewing and inspiring scenery in the world while setting foot on the Antarctic continent. Attempt two shore landings per day (weather permitting) and encounter Gentoo, Chinstrap and Adelie penguin rookeries, Weddell, crabeater and leopard seals, and orca, humpback and minke whales in the cold Antarctic waters. During the voyage, learn about the peninsula's remarkable history. This is what we've all been waiting for - a chance to explore step foot on the Great White Continent! Over the next 4 days the Expedition will navigate southwards making stops in the South Shetland Islands then through the Bransfield Strait and to the Antarctic Peninsula. Our goal is to attempt two excursions per day while navigating through the area but the itinerary and daily schedule will be based on the local weather and ice conditions. During the voyage, learn about some of the most important and dramatic expeditions to this remote corner of the world.

### Days 9-10 Drake Passage/Ushuaia

Begin the journey north to the home port of Ushuaia. Review the highlights of the Antarctic experience with the lecturers and staff. Keep your eyes open on the observation deck for some last-minute whale sightings. Leave Antarctica and head north across the Drake Passage. In between bird watching and whale watching and enjoying some final lectures by the expedition staff, this is a chance to relax and review the adventures of the past week before returning to Ushuaia. Remember, the best way to experience the wildlife of the Drake Passage is to be on deck keeping a look out for Albatross, Prions, and Whales!

### Day 11 Ushuaia

Disembark the G Expedition after breakfast.

#### Please Note:

While it is our intention to adhere to the route described below, there is a certain amount of flexibility built into the itinerary and on occasion it may be necessary, or desirable to make alterations. The itinerary is brief, as we never know exactly where our journey will take us. Due to our style of travel and the regions we visit, travel can be unpredictable.

Wild Earth Travel

*Small Ships, Big Adventures*

0800 945 3327 (within New Zealand) | +64 (0) 3 365 1355 | 1800 107 715 (within Australia)

[info@wildearth-travel.com](mailto:info@wildearth-travel.com) | [wildearth-travel.com](http://wildearth-travel.com)

# Wild Earth Travel

*Small Ships, Big Adventures*

[wildearth-travel.com](http://wildearth-travel.com)

[info@wildearth-travel.com](mailto:info@wildearth-travel.com)

## YOUR SHIP: EXPEDITION

<b>YOUR SHIP:</b>	<b>Expedition</b>
<b>VESSEL TYPE:</b>	<b>Expedition</b>
<b>LENGTH:</b>	<b>102 metres (331 feet)</b>
<b>PASSENGER CAPACITY:</b>	<b>128</b>
<b>BUILT/REFURBISHED:</b>	<b>1976/2017</b>

With just 128 passengers and a 10:1 guest-to-expert ratio, Polar cruising with G is designed for real exploration rather than passive sightseeing. Small ship size allows for daily landings when conditions permit, getting guests off the ship and into polar landscapes more often than larger vessels can manage. Expert-led excursions are a core part of the experience, with historians, biologists, geologists, and wildlife specialists providing context and depth to every landing, glacier, and wildlife encounter.

The expedition experience focuses on substance, value, and community. Zodiac excursions, expert talks, gear use, and warm, informal hospitality are included, prioritising time on land over luxury extras. The newly refurbished Expedition ship, launching for the 2025/2026 season, blends proven polar capability with upgraded cabins, ensuite bathrooms, refreshed common areas, and modernised engines. A relaxed, small-group atmosphere fosters strong connections between guests, crew, and experts, creating a shared sense of purpose and one of the most memorable aspects of the journey.



Wild Earth Travel

*Small Ships, Big Adventures*

**0800 945 3327** (within New Zealand) | +64 (0) 3 365 1355 | **1800 107 715** (within Australia)

[info@wildearth-travel.com](mailto:info@wildearth-travel.com) | [wildearth-travel.com](http://wildearth-travel.com)

# Wild Earth Travel

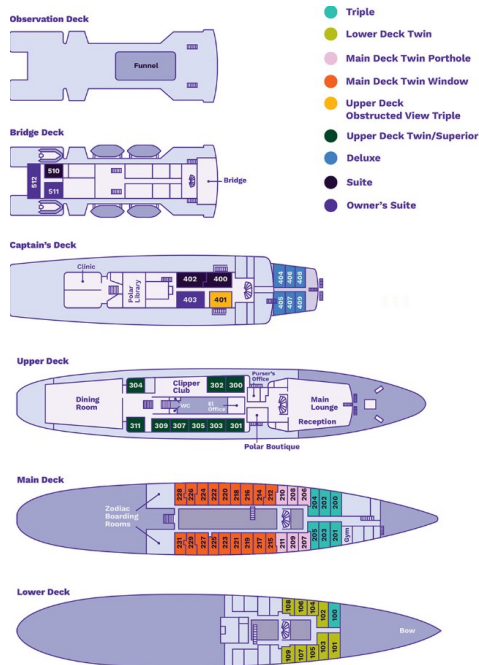
*Small Ships, Big Adventures*



[wildearth-travel.com](http://wildearth-travel.com)

[info@wildearth-travel.com](mailto:info@wildearth-travel.com)

## INSIDE YOUR SHIP



Deluxe



Lower Deck Twin



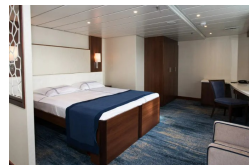
Main Deck Twin Porthole



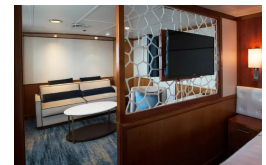
Main Deck Twin Window



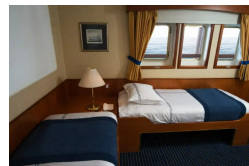
Owners Suite



Suite



Superior



Triple



Wild Earth Travel  
*Small Ships, Big Adventures*

0800 945 3327 (within New Zealand) | +64 (0) 3 365 1355 | 1800 107 715 (within Australia)

[info@wildearth-travel.com](mailto:info@wildearth-travel.com) | [wildearth-travel.com](http://wildearth-travel.com)

# Wild Earth Travel

*Small Ships, Big Adventures*



[wildearth-travel.com](http://wildearth-travel.com)

[info@wildearth-travel.com](mailto:info@wildearth-travel.com)

## PRICING

### 22-Nov-2026 to 02-Dec-2026

Triple	17299 NZD pp
Lower Deck Twin	19399 NZD pp
Main Deck Twin Porthole	20399 NZD pp
Main Deck Twin Window	21499 NZD pp
Superior	23499 NZD pp
Deluxe	24899 NZD pp
Suite	26099 NZD pp
Owners Suite	26899 NZD pp

### 12-Dec-2026 to 22-Dec-2026

Triple	18799 NZD pp
Lower Deck Twin	21099 NZD pp
Main Deck Twin Porthole	22199 NZD pp
Main Deck Twin Window	23399 NZD pp
Superior	25499 NZD pp
Deluxe	27099 NZD pp
Suite	27999 NZD pp
Owners Suite	28799 NZD pp

### 02-Jan-2027 to 12-Jan-2027

Triple	20199 NZD pp
Lower Deck Twin	22699 NZD pp
Main Deck Twin Porthole	23799 NZD pp
Main Deck Twin Window	25199 NZD pp
Superior	26599 NZD pp
Deluxe	28299 NZD pp
Suite	29199 NZD pp
Owners Suite	30099 NZD pp

### 30-Jan-2027 to 09-Feb-2027

Triple	19099 NZD pp
Lower Deck Twin	22199 NZD pp
Main Deck Twin Porthole	23499 NZD pp
Main Deck Twin Window	24399 NZD pp
Superior	25899 NZD pp
Deluxe	27499 NZD pp
Suite	28399 NZD pp
Owners Suite	29199 NZD pp

Wild Earth Travel

*Small Ships, Big Adventures*

0800 945 3327 (within New Zealand) | +64 (0) 3 365 1355 | 1800 107 715 (within Australia)

[info@wildearth-travel.com](mailto:info@wildearth-travel.com) | [wildearth-travel.com](http://wildearth-travel.com)

# Wild Earth Travel

*Small Ships, Big Adventures*

[wildearth-travel.com](http://wildearth-travel.com)

[info@wildearth-travel.com](mailto:info@wildearth-travel.com)

## PRICING

### 04-Mar-2027 to 14-Mar-2027

Triple	17099 NZD pp
Lower Deck Twin	19299 NZD pp
Main Deck Twin Porthole	19999 NZD pp
Main Deck Twin Window	20399 NZD pp
Superior	22399 NZD pp
Deluxe	23799 NZD pp
Suite	25899 NZD pp
Owners Suite	26699 NZD pp

### 13-Mar-2027 to 23-Mar-2027

Triple	16199 NZD pp
Lower Deck Twin	18399 NZD pp
Main Deck Twin Porthole	19099 NZD pp
Main Deck Twin Window	20199 NZD pp
Superior	21699 NZD pp
Deluxe	23099 NZD pp
Suite	24899 NZD pp
Owners Suite	25599 NZD pp

### 22-Mar-2027 to 01-Apr-2027

Triple	14599 NZD pp
Lower Deck Twin	16599 NZD pp
Main Deck Twin Porthole	17299 NZD pp
Main Deck Twin Window	18199 NZD pp
Superior	19599 NZD pp
Deluxe	20899 NZD pp
Suite	22499 NZD pp
Owners Suite	23099 NZD pp

## Optional extras & upgrades

### Camping

Follow in the footsteps of bold explorers and experience this land's awe-inspiring splendours first hand. Our Antarctica camping experience includes time to enjoy the beauty of Antarctica near your campsite with ample photography options. Experience the sounds of heaving ice, the fresh scent of the sea, the stars at night—nothing gets you closer to the humbling forces of nature than spending a night ashore! Camping is available on select departures, please contact us for more details.

### Kayaking

Weather permitting, you will head out in kayaks during the days where zodiac landings are also available. Kayaking as part of a group lead by experienced and skilled leaders, is an opportunity to experience these remote regions from another vantage point. No other activity gets you as close to the natural environment!

**Optional tours and excursions are available, please contact us for more details.**

Wild Earth Travel

*Small Ships, Big Adventures*

0800 945 3327 (within New Zealand) | +64 (0) 3 365 1355 | 1800 107 715 (within Australia)

[info@wildearth-travel.com](mailto:info@wildearth-travel.com) | [wildearth-travel.com](http://wildearth-travel.com)