

Wild Earth Travel

Small Ships, Big Adventures

wildearth-travel.com

info@wildearth-travel.com

ANTARCTICA CLASSIC IN DEPTH - 13 DAY CRUISE FROM USHUAIA

This 13-day expedition introduces you to the magic of the South Shetland Islands and the Antarctic Peninsula. Part of the reward of arriving in Antarctica is the challenge of negotiating the Drake Passage - and the MS Expedition will bring you there safely. Encounter leopard seals lazing on ice floes and immense rookeries of penguins surrounded by towering glaciers. The Expedition's expert guides and lecturers offer knowledge and insight that really bring the nature and history of the region to life, creating the adventure of a lifetime.



ITINERARY

Day 1 Ushuaia

Arrive in Ushuaia at any time. Enjoy the sights and sounds of the world's most southerly city. Arrival transfer is included. There will be a welcome desk in the lobby of the start hotel that will provide more specific information on the MS Expedition.

Day 2 Ushuaia/Drake Passage

Wild Earth Travel

Small Ships, Big Adventures

0800 945 3327 (within New Zealand) | +64 (0) 3 365 1355 | 1800 107 715 (within Australia)

info@wildearth-travel.com | wildearth-travel.com

Wild Earth Travel

Small Ships, Big Adventures

wildearth-travel.com

info@wildearth-travel.com

Enjoy a free morning in Ushuaia. Do any last minute shopping, explore the town or the surrounding countryside. Embarkation on the MS Expedition begins in the afternoon at the port in Ushuaia. Enjoy the evening sailing through the Beagle Channel. Expedition travel can be full of surprises! While it is our intention of adhere to the itinerary described below, there is a certain amount of flexibility built into the itinerary and on occasion it may be necessary, or desirable to make alterations. On your first day onboard, your Expedition Leader will give you an expedition overview outlining what the specific plans are for your trip.

Days 3-4 Drake Passage/South Shetland Islands

The adventure begins with a 800km (497 mi) crossing of the passage named in honour of 16th-century English sea captain and privateer Sir Francis Drake. The ship is at home in this part of the Southern Ocean. Take in daily lectures from the expedition team and keep an eye out for sightings of icebergs, whales, and albatross following in the Expedition's wake. The M/S Expedition is at home in this part of the Southern Ocean, known for the unimpeded never ending fetch of the winds that encircle the Antarctic. As the Expedition crosses the passage there will be time to become acquainted with the ship and frequent the common areas that include the lounge, dining hall, library and lecture hall where we meet our guides, ship's crew and expedition staff. Begin lectures and information sessions to learn the extraordinary human and natural history of the Antarctic region.

Days 5-10 South Shetland Islands/Antarctic Peninsula

With a total of six days to explore the worlds most southerly ecosystem, there's more time to encounter the unique wildlife and awe-inspiring scenery of the Antarctic. Our goal is to get ashore twice per day to encounter penguin rookeries, get a good look at the variety of seal species, and keep an eye out for the whales that feed in the peninsula's cold, fertile waters. Navigate southwards making stops in the South Shetland Islands then through the Bransfield Strait and to the Antarctic Peninsula. During the voyage, learn about some of the most important and dramatic expeditions to this remote corner of the world. Take an optional polar plunge, visit an abandoned whaling station or a working scientific research station and gain a new perspective on this part of world. Our goal is to attempt two excursions per day while we navigate through the area but our itinerary and daily schedule will be based on the local weather and ice conditions that we encounter.

Days 11-12 Drake Passage/Ushuaia

Begin the journey north to the home port of Ushuaia. Review the highlights of the Antarctic experience with the lecturers and staff. Keep your eyes open on the observation deck for some last-minute whale sightings. Leave Antarctica and head north across the Drake Passage. In between bird watching and whale watching and enjoying some final lectures by the expedition staff, this is a chance to relax and review the adventures of the past week before returning to Ushuaia. Remember, the best way to experience the wildlife of the Drake Passage is to be on deck keeping a look out for Albatross, Prions and Whales!

Day 13 Ushuaia

Disembark the Expedition after breakfast. In the morning upon completion you will disembarkation in Ushuaia. Passengers will receive a complimentary transfer to either the airport or a central location where luggage can be stored. For those on morning flights, a transfer will bring them directly to Ushuaia airport (USH). The rest of the passengers will be transferred to the luggage storage point and given time to explore the city. These passengers should then return to retrieve their luggage and board a second transfer to Ushuaia airport in the afternoon, depending on their flight times. Please note that the transfer times are subject to change according to flight schedules.

Please Note:

While it is our intention to adhere to the route described below, there is a certain amount of flexibility built into the itinerary and on occasion it may be necessary, or desirable to make alterations. The itinerary is brief, as we never know exactly where our journey will take us. Due to our style of travel and the regions we visit, travel can be unpredictable.

Wild Earth Travel

Small Ships, Big Adventures

0800 945 3327 (within New Zealand) | +64 (0) 3 365 1355 | 1800 107 715 (within Australia)

info@wildearth-travel.com | wildearth-travel.com

Wild Earth Travel

Small Ships, Big Adventures

wildearth-travel.com

info@wildearth-travel.com

YOUR SHIP: EXPEDITION

| | |
|----------------------------|------------------------------|
| YOUR SHIP: | Expedition |
| VESSEL TYPE: | Expedition |
| LENGTH: | 102 metres (331 feet) |
| PASSENGER CAPACITY: | 128 |
| BUILT/REFURBISHED: | 1976/2017 |

With just 128 passengers and a 10:1 guest-to-expert ratio, Polar cruising with G is designed for real exploration rather than passive sightseeing. Small ship size allows for daily landings when conditions permit, getting guests off the ship and into polar landscapes more often than larger vessels can manage. Expert-led excursions are a core part of the experience, with historians, biologists, geologists, and wildlife specialists providing context and depth to every landing, glacier, and wildlife encounter.

The expedition experience focuses on substance, value, and community. Zodiac excursions, expert talks, gear use, and warm, informal hospitality are included, prioritising time on land over luxury extras. The newly refurbished Expedition ship, launching for the 2025/2026 season, blends proven polar capability with upgraded cabins, ensuite bathrooms, refreshed common areas, and modernised engines. A relaxed, small-group atmosphere fosters strong connections between guests, crew, and experts, creating a shared sense of purpose and one of the most memorable aspects of the journey.



Wild Earth Travel

Small Ships, Big Adventures

0800 945 3327 (within New Zealand) | +64 (0) 3 365 1355 | 1800 107 715 (within Australia)

info@wildearth-travel.com | wildearth-travel.com

Wild Earth Travel

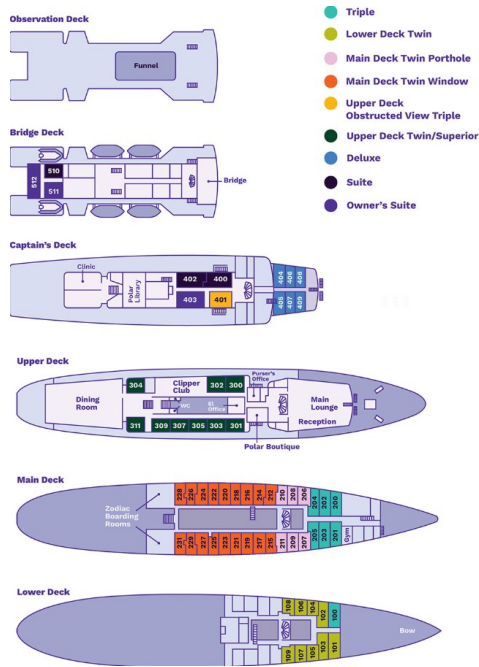
Small Ships, Big Adventures



wildeath-travel.com

info@wildeath-travel.com

INSIDE YOUR SHIP



Deluxe



Lower Deck Twin



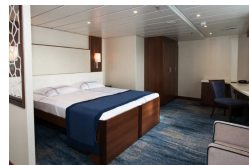
Main Deck Twin Porthole



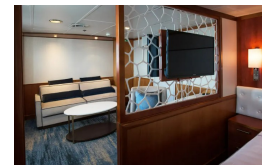
Main Deck Twin Window



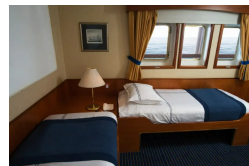
Owners Suite



Suite



Superior



Triple



Wild Earth Travel

Small Ships, Big Adventures



wildearth-travel.com

info@wildearth-travel.com

PRICING

11-Nov-2026 to 23-Nov-2026

| | |
|-------------------------|--------------|
| Triple | 17799 NZD pp |
| Lower Deck Twin | 20499 NZD pp |
| Main Deck Twin Porthole | 21599 NZD pp |
| Main Deck Twin Window | 22299 NZD pp |
| Superior | 24199 NZD pp |
| Deluxe | 25799 NZD pp |
| Suite | 26699 NZD pp |
| Owners Suite | 27499 NZD pp |

01-Dec-2026 to 13-Dec-2026

| | |
|-------------------------|--------------|
| Triple | 19299 NZD pp |
| Lower Deck Twin | 22699 NZD pp |
| Main Deck Twin Porthole | 23799 NZD pp |
| Main Deck Twin Window | 24899 NZD pp |
| Superior | 26399 NZD pp |
| Deluxe | 28099 NZD pp |
| Suite | 29599 NZD pp |
| Owners Suite | 30499 NZD pp |

Optional extras & upgrades

Camping

Follow in the footsteps of bold explorers and experience this land's awe-inspiring splendours first hand. Our Antarctica camping experience includes time to enjoy the beauty of Antarctica near your campsite with ample photography options. Experience the sounds of heaving ice, the fresh scent of the sea, the stars at night—nothing gets you closer to the humbling forces of nature than spending a night ashore!

Kayaking

Weather permitting, you will head out in kayaks during the days where zodiac landings are also available. Kayaking as part of a group lead by experienced and skilled leaders, is an opportunity to experience these remote regions from another vantage point. No other activity gets you as close to the natural environment!

Optional tours and excursions are available, please contact us for more details.

Wild Earth Travel
Small Ships, Big Adventures

0800 945 3327 (within New Zealand) | +64 (0) 3 365 1355 | 1800 107 715 (within Australia)

info@wildearth-travel.com | wildearth-travel.com