

# Wild Earth Travel

*Small Ships, Big Adventures*

**wildearth-travel.com**

**info@wildearth-travel.com**

## ANTARCTIC WILDLIFE ADVENTURE - 23 DAYS

Experience the essence of Antarctica: a white wilderness of spectacular icescapes, obliging marine wildlife, scenic narrow channels, and panoptic penguin colonies. The Antarctic Peninsula is the pinnacle of Polar. You may think adventure is only for the young, the super athletic, or the bold risk-takers of the world. But regardless of your background and age, Antarctica will fill you with the spirit of adventure. Once you see it, you will be swept up in the desire to make the most of every precious second you spend in this amazing place. You may not want to sleep at all while you're here, preferring instead to live your waking Antarctic dreams. You may wonder what eyes were ever meant for, if not for absorbing the splendor of Antarctica and its incredible wildlife. You'll surely want to capture every snowflake and penguin pose, not only with your camera, but with your eternal memory so that you may carry them everywhere. The spirit of Antarctic adventure may manifest in different ways. You may want to get physical by taking to its icy waters in a sea kayak. You may want to test your endurance by spending a night in a tent on its icy surface. You may simply want to breathe it all in so deeply that it becomes part of you. No matter how you answer the call of Antarctica, you will be changed forever. That is real adventure.



### ITINERARY

#### Day 1: Buenos Aires, Argentina

Welcome to Buenos Aires, the capital of Argentina. The name of the city can be translated as "fair winds" but it is also referred to as the "Paris of South America". This is an exuberant brew of traditions, languages and different types of cultures. Upon your arrival at the airport we provide a transfer to your hotel, which has been arranged by us and is included in the price of the voyage. For the rest of the day you are free to explore this welcoming city.

Wild Earth Travel

*Small Ships, Big Adventures*

**0800 945 3327** (within New Zealand) | +64 (0) 3 365 1355 | **1800 107 715** (within Australia)

info@wildearth-travel.com | **wildearth-travel.com**

# Wild Earth Travel

*Small Ships, Big Adventures*

**wildearth-travel.com**

**info@wildearth-travel.com**

## Day 2: Embarkation in Buenos Aires

We provide a group transfer to the pier and welcome you aboard the deluxe expedition ship M/V Sea Spirit. Explore the ship and get comfortable in your home away from home for the extraordinary adventure to come. Savor the anticipation of your Antarctic dreams coming true as we slip our moorings and sail toward a true wilderness where wildlife abounds.

## Day 3-5: South Atlantic Ocean

Sailing south through the South Atlantic Ocean toward the Falkland Islands, we keep a lookout for dolphins and whales. Presentations and workshops by our expert staff, as well as our range of onboard recreation facilities, ensure that these days at sea are not idly spent. The ship's stabilizing fins provide comfort in the event of rough seas.

## Day 6-7: Falkland Islands

The remote and sparsely populated Falkland Islands are a birders' paradise. We anticipate visiting one or more of the isolated outer islands where large colonies of penguins and albatross are easily accessible. The Falklands are also a great place to observe marine mammals. Fur seals and elephant seals can be found on sandy beaches while the waters in and around the archipelago are home to various whale and dolphin species. Our route and exploration opportunities are dependent on weather among these windswept islands. We also intend to visit Stanley, the charmingly British capital of the Falkland Islands. Attractions within pleasant walking distance along the waterfront promenade include the Falkland Islands Museum, the governor's house, a cathedral with impressive whalebone arch outside, a war memorial, quality gift shops, pubs, and views of shipwrecks in the harbor.

## Day 8-9: Southern Ocean

From the Falkland Islands we head east toward South Georgia, passing the remote, seabird-covered pinnacles known as Shag Rocks on the way. We also cross the Antarctic Convergence, the biological boundary of the Southern Ocean. Briefings, bio-security procedures, and lectures from our staff prepare you for our arrival in South Georgia.

## Day 10-14: South Georgia

South Georgia the premier destination for subantarctic wildlife viewing in a supremely scenic wilderness environment. The islands are said to host upwards of 100 million seabirds, including numerous species of albatross, penguins, prions, petrels, and terns. On beaches such as those at Salisbury Plain and St. Andrews Bay, over 100,000 elephant seals and three million fur seals jostle for space among innumerable penguins including stately king penguins and sprightly macaroni penguins. The recently completed rat eradication program is sure to make this wilderness even more pristine and rich with birdlife. The bountiful waters surrounding South Georgia are also inhabited by an increasing number of whales. The historical whaling station of Grytviken is now home to the excellent South Georgia Museum managed by the South Georgia Heritage Trust. This is also the final resting place of Ernest Shackleton, the legendary polar explorer. This is expedition cruising at its most authentic. Our route and exploration opportunities in South Georgia are dependent on the weather conditions we encounter. Our experienced captain and expedition leader decide the itinerary and continually adjust plans as conditions and opportunities warrant. You can be sure that the best possible advantage will be taken of the circumstances presented to us by Nature in this wild and remote corner of the world. We take every safe opportunity to go ashore in this amazing place. We also hope to offer a hiking expedition over part of the famous "Shackleton Walk" from Fortuna Bay to the abandoned whaling station at Stromness. Our days in South Georgia are filled with meaningful activities, presentations by our experts, and enough incredible scenery and wildlife to fill your camera and overwhelm your emotions.

## Day 15-16: Southern Ocean

After a memorable time in amazing South Georgia we proceed southwest toward the Antarctic Peninsula. Pelagic seabirds including the majestic wandering albatross are common in these waters and can readily be viewed from panoramic open decks or from exterior stateroom windows and balconies.

## Day 17-21: South Shetland Islands and the Antarctic Peninsula

The Antarctic Peninsula region contains some of the world's most impressive scenery and wildlife viewing opportunities. Ice-strewn bays and channels are surrounded by towering mountain peaks covered in permanent snow and

Wild Earth Travel

*Small Ships, Big Adventures*

**0800 945 3327** (within New Zealand) | +64 (0) 3 365 1355 | **1800 107 715** (within Australia)

info@wildearth-travel.com | wildearth-travel.com



# Wild Earth Travel

*Small Ships, Big Adventures*



**wildearth-travel.com**

**info@wildearth-travel.com**

immense glaciers. Icebergs of every size and description complete an image of incomparable beauty. Waters rich with krill are home to a variety of whale and seal species. The whole area is alive with penguins foraging at sea and forming large nesting colonies at special places on land. Antarctic research stations of various nationalities can also be found here. The South Shetland Islands are the northernmost islands in Antarctica. This wild and beautiful island chain contains numerous landing sites rich with wildlife, fascinating geology, and historical significance. Our first encounter with Antarctica will likely be Elephant Island, where men from Shackleton's famous Endurance expedition spent the winter. We also hope to visit Deception Island, a flooded but still active volcanic caldera containing the remains of a derelict whaling station. Farther south, the Antarctic Peninsula itself contains sheltered bays, abundant wildlife, and fantastic vistas of mountains and glaciers. Weather and ice permitting, we plan to spend a day in the vicinity of the peninsula with the hope of making a landing on the continent of Antarctica. Antarctica is a true wilderness and is subject to unpredictable weather and ever-changing ice conditions, which dictate our route and exploration opportunities. This is a real expedition where we exploit every opportunity to experience excellent wildlife viewing, amazing scenery, and Zodiac excursions.

cannot be guaranteed.

## Day 22-23: Drake Passage & Beagle Channel

From Antarctica we head north through the Drake Passage toward South America, always on the lookout for marine mammals and rare seabirds. Finally we enter the famous Beagle Channel between the Argentine and Chilean sides of Tierra del Fuego.

## Day 24: Disembarkation in Ushuaia, Argentina

After breakfast we say farewell in the city of Ushuaia, the southernmost city in the world. We provide a group transfer to the airport or to the town center if you wish to spend more time here. As you look back on your wonderful experience in the Falklands, South Georgia and Antarctica, you may already be looking forward to your next incredible adventure to the ice!

### Please Note:

Itinerary, landings and all other activities during the cruise depend strongly on ice and weather conditions and are subject to the decisions of the Expedition Leader and the Captain of the vessel. Encounters with any mentioned wildlife



**Wild Earth Travel**

*Small Ships, Big Adventures*

**0800 945 3327** (within New Zealand) | +64 (0) 3 365 1355 | **1800 107 715** (within Australia)

info@wildearth-travel.com | **wildearth-travel.com**



# Wild Earth Travel

*Small Ships, Big Adventures*

**wildearth-travel.com**

**info@wildearth-travel.com**

## YOUR SHIP: SEA SPIRIT

<b>YOUR SHIP:</b>	<b>Sea Spirit</b>
<b>VESSEL TYPE:</b>	<b>Small Ship Expedition</b>
<b>LENGTH:</b>	<b>90 metres</b>
<b>PASSENGER CAPACITY:</b>	<b>114</b>
<b>BUILT/REFURBISHED:</b>	<b>1992 / 2017</b>

Like some of the birds we see in the Arctic and Antarctica, our m/v Sea Spirit is migratory and follows the sun, northbound in the summer and southbound in the winter, always ready for spontaneous discoveries - a pod of whales, a family of polar bears or a glaciated mountain vista. She is highly maneuverable and capable of navigating the narrow fjords of East Greenland and entering the small bays of Spitsbergen.

Onboard, we create a friendly and welcoming atmosphere for all our guests. They are united by one goal - to have a memorable wilderness experience and to become real polar adventurers. We believe that first-hand travel to such places makes one an ambassador for conservation, and helps strengthen our resolve to protect these natural environments for future generations.

Public areas include: Reception, Restaurant, Bar, Outdoor Bistro, Club Lounge, Library, Presentation Lounge, Infirmary, Gym, Bridge.

We have open Bridge policy. Talk to the Captain and officers. Watch landscapes from this special angle of view. Fix your location at a map of your expedition.



**Wild Earth Travel**

*Small Ships, Big Adventures*

**0800 945 3327** (within New Zealand) | +64 (0) 3 365 1355 | **1800 107 715** (within Australia)

info@wildearth-travel.com | **wildearth-travel.com**

# Wild Earth Travel

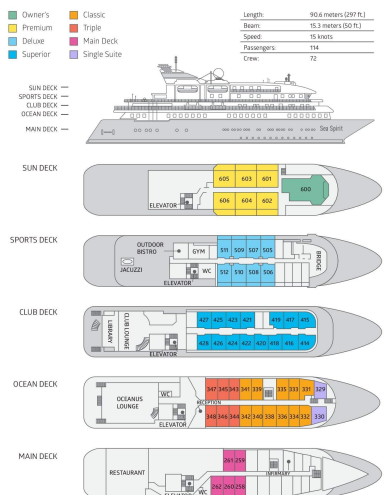
*Small Ships, Big Adventures*

[wildearth-travel.com](http://wildearth-travel.com)

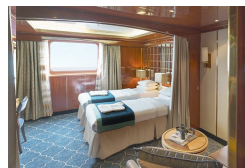
[info@wildearth-travel.com](mailto:info@wildearth-travel.com)

## INSIDE YOUR SHIP

### DECK PLAN M/V SEA SPIRIT



### Classic Suite



### Deluxe Suite



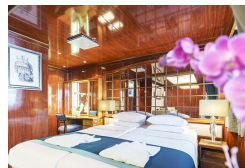
### Main Deck Suite



### Owner's Suite



### Premium Suite



### Superior Suite



### Triple Classic







# Wild Earth Travel

*Small Ships, Big Adventures*



**wildearth-travel.com**

**info@wildearth-travel.com**

## PRICING

### 27-Feb-2026 to 21-Mar-2026

Triple Classic	25595 AUD pp
Main Deck Suite	33895 AUD pp
Classic Suite	36395 AUD pp
Superior Suite	37095 AUD pp
Deluxe Suite	41295 AUD pp
Premium Suite	44395 AUD pp
Owner's Suite	56195 AUD pp

### 09-Mar-2028 to 31-Mar-2028

Triple Classic	31795 AUD pp
Main Deck Suite	37195 AUD pp
Classic Suite	39295 AUD pp
Superior Suite	39895 AUD pp
Deluxe Suite	44695 AUD pp
Premium Suite	47795 AUD pp
Owner's Suite	59395 AUD pp



**Wild Earth Travel**

*Small Ships, Big Adventures*

**0800 945 3327** (within New Zealand) | +64 (0) 3 365 1355 | **1800 107 715** (within Australia)

info@wildearth-travel.com | **wildearth-travel.com**



# Wild Earth Travel

*Small Ships, Big Adventures*



**wildearth-travel.com**

**info@wildearth-travel.com**

## 15% OFF ANTARCTIC WILDLIFE ADVENTURE

Super Early Booking discounts - 15% off Triple Suites and 25% off Main Deck, Single, Classic, Superior, Deluxe, Premium, and Owner's Suites - are valid until September 30, 2026. Terms and conditions apply. This special offer is subject to availability. Please contact us for more details.

### Optional extras & upgrades

#### Kayaking

Antarctica is a paddlers' paradise. The White Continent boasts some of the world's most impressive landscapes and is home to incredible marine wildlife. Sea Kayak Club members will have the opportunity to paddle through tranquil waters filled with glittering icebergs and porpoising penguins while surrounded by magnificent glaciers and mountains. The protected and picturesque waters of the Antarctic Peninsula offer the best sea kayaking opportunities in Antarctica. Sea Kayak Club is also offered on selected voyages to South Georgia, where members may have the rare opportunity to encounter the island's legendary abundance of wildlife from a kayaker's perspective, if the area's notoriously inclement weather permits.

#### Photography. FREE

The Polar Regions are perhaps the most photogenic on earth, with countless beautiful scenes presenting themselves every day. Endless expanses of ice, beaches crowded with seals or penguins, sunsets over unbroken horizons, starlit skies, and even the majestic northern lights – they all present fantastic photographic opportunities – and in order to make sure that you come home with some spectacular images we offer you the chance to learn and practice your photography alongside an experienced professional. Our expert Photographer will be on hand to answer your questions and give advice, both in the form of on-board lectures and workshops on shore. Explore the key elements of photography in a fun and relaxed setting, with plenty of opportunities for questions and feedback. Learn how to see light in a new way and experiment with the techniques of composition and framing.



Wild Earth Travel

*Small Ships, Big Adventures*

**0800 945 3327** (within New Zealand) | +64 (0) 3 365 1355 | **1800 107 715** (within Australia)

info@wildearth-travel.com | **wildearth-travel.com**