

# Wild Earth Travel

*Small Ships, Big Adventures*

[wildearth-travel.com](http://wildearth-travel.com)

[info@wildearth-travel.com](mailto:info@wildearth-travel.com)

## ANTARCTIC WILDLIFE ADVENTURE - 23 DAYS - 2026/2027 CRUISE SEASON

This extraordinary journey begins in Ushuaia, Argentina, where you'll embark on the M/V Sea Spirit and sail through the scenic Beagle Channel. Your first stop is the Falkland Islands, home to charming settlements and thriving colonies of penguins and seabirds. From there, the voyage continues to South Georgia, often referred to as the "Serengeti of the Southern Ocean," where you'll witness breathtaking landscapes, massive king penguin colonies, and abundant marine life. The adventure culminates in the Antarctic Peninsula, a pristine wilderness of towering icebergs, dramatic mountain peaks, and unique wildlife like humpback whales, seals, and Adelie penguins. Each day, shore landings and Zodiac cruises bring you closer to this stunning environment, offering incredible photography opportunities and unforgettable moments. Finally, the journey concludes in Buenos Aires, Argentina, leaving you with cherished memories of one of the most remote and awe-inspiring regions on Earth.



### ITINERARY

#### Day 1: Arrival in Ushuaia, Argentina (hotel night)

Welcome to Ushuaia, the world's southernmost city and starting point of our Antarctic expedition! Upon your arrival at the airport, you will be greeted by our staff and transferred to a quality hotel, which has been arranged by us and is included in the price of the itinerary. For the rest of the day, you are free to explore this vibrant port city and adventure hub.

For an introduction to local history and wildlife, the interesting Museo del Fin del Mundo is worth a visit. If you have time to spare, a variety of nature activities can be arranged to suit all interests and fitness levels, from hiking in nearby Tierra del Fuego National Park to wildlife viewing in the Beagle Channel. For dinner, Ushuaia offers a wide range of restaurants featuring Patagonian lamb and delectable Fuegian seafood.

#### Day 2: Welcome Aboard!

Wild Earth Travel

*Small Ships, Big Adventures*

0800 945 3327 (within New Zealand) | +64 (0) 3 365 1355 | 1800 107 715 (within Australia)

[info@wildearth-travel.com](mailto:info@wildearth-travel.com) | [wildearth-travel.com](http://wildearth-travel.com)



# Wild Earth Travel

*Small Ships, Big Adventures*



[wildearth-travel.com](http://wildearth-travel.com)

[info@wildearth-travel.com](mailto:info@wildearth-travel.com)

After breakfast at your hotel, the morning is yours to enjoy Ushuaia. Explore the delightful waterfront and savor views of the snowcapped Martial Range, the southernmost peaks of the Andes. Take advantage of shopping for souvenirs or some last-minute necessities such as cold-weather gear. Just remember, you will soon receive your very own parka to keep and waterproof boots to borrow on board the ship. For lunch, the many cafes, parrillas and gelato shops on Avenida San Martin will be sure to satisfy any appetite.

In the afternoon, you will be transferred to the pier where we will warmly welcome you aboard the deluxe expedition vessel M/V Sea Spirit. Get settled in your spacious suite and explore the ship that will be your comfortable home during the extraordinary adventure to come. After getting underway, a full schedule of events kicks off with informative briefings and introductions from your expedition staff. After the first of many delicious dinners on board, step out onto the open decks to admire the scenery and gorgeous evening light as we pass through the Beagle Channel.

### Day 3-4: Drake Passage

After passing the islands of Tierra del Fuego, we turn south to begin our crossing of the Drake Passage. The majestic wandering albatross and other graceful subantarctic seabirds are common in these waters and can readily be viewed from panoramic open decks and balconies. We also cross the Antarctic Convergence, the biological boundary of the Southern Ocean. The ship's stabilizing fins provide comfort in the event of rough seas. We hope to arrive in the South Shetland Islands on the evening of our second day at sea.

### Day 5-8: South Shetland Islands and Antarctic Peninsula

Within the next days, we explore the highlights of the South Shetland Islands and the Antarctic Peninsula. This region contains some of the world's most impressive scenery and the best wildlife viewing in Antarctica. Sheltered bays and channels sparkle with ice and reflect towering mountain peaks coated in permanent snow and immense glaciers. Icebergs of every size and description complete an image of incomparable beauty. Waters rich with krill are home to huge numbers of marine mammals and seabirds. The whole area is alive with penguins foraging at sea and forming large rookeries at special places on land. Here we also find Antarctic research bases of various nationalities, some with gift shops and post offices.

The South Shetland Islands are the northernmost islands in Antarctica and will likely be our first sight of land. This wildly beautiful island chain contains many landing sites with historical significance and abundant wildlife. Among them is Elephant Island, where men from Shackleton's famous Endurance expedition spent the winter of 1916. We will also explore the supremely picturesque Gerlache Strait area of the Antarctic Peninsula, a pristine wilderness of spectacular white landscapes, colossal icebergs, obliging marine mammals and bustling penguin colonies. Here we have a chance to land on the continent of Antarctica.

Throughout this area, we find large colonies of gentoo, chinstrap and Adelie penguins, sometimes side by side. This is a great time for close encounters with inquisitive penguin chicks, who are now gaining independence as they fledge. This is also the peak of the whale-watching season. Having gorged themselves on krill all summer, humpback and minke whales become more playful and obliging to Zodiacs and kayakers. Crabeater and Weddell seals are joined by Antarctic fur seals and southern elephant seals. The skies are full of newly fledged seabirds.

Antarctica is a true wilderness with unpredictable weather and ever-changing ice conditions, which will dictate our route and exploration opportunities. With more than 14 hours of daylight per day, we seize every chance to experience excellent wildlife viewing and amazing scenery via Zodiac cruises and shore excursions.

### Day 9-10: Scotia Sea

We now proceed northeast through the wildlife-rich waters of the Scotia Sea. We keep a lookout for abundant humpback and fin whales along the way. Briefings, bio-security procedures and presentations by our lecture staff prepare you for our arrival in South Georgia.

### Day 11-14: South Georgia Island

The next five days will be devoted to the exploration of the unique and spectacular wilderness of South Georgia, home to some of the greatest concentrations of wildlife on the planet. This isolated subantarctic island is said to host upwards of 100 million seabirds, including numerous species of albatross, penguins, prions, petrels, shags, skuas, gulls and terns. Among these is one of the largest flying birds in the world--the wandering albatross. Here you have a rare opportunity to witness part of their remarkable life cycle.



Wild Earth Travel

*Small Ships, Big Adventures*

0800 945 3327 (within New Zealand) | +64 (0) 3 365 1355 | 1800 107 715 (within Australia)

[info@wildearth-travel.com](mailto:info@wildearth-travel.com) | [wildearth-travel.com](http://wildearth-travel.com)

# Wild Earth Travel

*Small Ships, Big Adventures*

[wildearth-travel.com](http://wildearth-travel.com)

[info@wildearth-travel.com](mailto:info@wildearth-travel.com)

While most seabird chicks are already fledging, wandering albatross chicks are only now hatching in grassy nests overlooking the wild Southern Ocean.

On South Georgia's legendary beaches, king penguins are gathered in huge colonies that stretch from sandy shorelines to the foothills of glaciated mountains. Also at this time, hundreds of thousands of macaroni penguin chicks are getting ready to head out to sea. Rare birds such as the endemic South Georgia pipit and yellow-billed pintail round out the list of 78 bird species found across the territory. The successfully completed rat eradication program has made this wilderness even more pristine and rich with birdlife.

South Georgia is also home to staggering numbers of elephant seals and fur seals. At this time, thousands of fat elephant seal pups are lounging around on shore while mobs of rambunctious fur seal pups take to the water. Once hunted nearly to extinction, large whales have returned to the bountiful seas surrounding South Georgia. With the whalers long gone, the historical whaling station of Grytviken is now home to the excellent South Georgia Museum. Here you will also find the grave of Sir Ernest Shackleton, heroic polar explorer and leader of the Endurance expedition.

In this rugged yet accessible environment, superb wildlife viewing is best complemented by active adventure. There are many opportunities for guided treks through this raw and untamed wilderness, including the legendary Shackleton Walk. For sea kayakers, the wildlife-rich waters of South Georgia offer the chance to paddle with hordes of seals and penguins in some of the world's most scenic waterways.

This is expedition cruising at its most authentic. Our precise route and exploration opportunities are dependent on weather in this wild and remote corner of the world. Our experienced captain and expedition leader will continually adjust plans to take maximum advantage of the conditions and circumstances at hand. You can be sure that we will take every safe opportunity to go ashore in this challenging environment.

## Day 15-16: Southern Ocean

We sail west toward the Falkland Islands. Presentations and workshops by our expert staff, as well as our range of onboard recreation facilities, ensure that this day at sea is not idly spent. Pelagic seabirds are our constant companions as we keep a vigilant watch for dolphins and whales in these productive waters.

## Day 17-18: The Falkland Islands

On these days we intend to come alongside the wharf at Stanley, the historic capital of the Falkland Islands. Attractions within pleasant walking distance along the waterfront promenade include the Falkland Islands Museum, the governor's house, various war memorials, quality gift shops and charming pubs. Christ Church Cathedral features an impressive whalebone arch and dramatic views of shipwrecks in the harbor.

We also plan to offer an excursion to Gypsy Cove, a national nature reserve where white sand beaches are frequented by numerous bird species, including the endemic Falklands flightless steamer duck. Here you can also see Magellanic penguins, whose chicks have fledged and are making a tentative start to their lives at sea. At this time, you may even find groups of sea lions hauled out on shore.

We continue our exploration of the Falklands in the isolated outlying islands. These bleakly beautiful isles are havens for wildlife. Large colonies of seabirds, perched on windy bluffs overlooking azure seas, are easily accessible by hiking over lush meadows. At this time, black-browed albatross soar down from above while feisty rockhopper penguins leap up surf-battered cliffs from below to feed their large chicks amongst the tussocks.

On nearby beaches, gentoo penguin chicks are starting to fledge while adult king penguins and chicks of all ages are getting ready to brave the austral winter. Just offshore, you may see Peale's dolphins and even killer whales patrolling the coasts. A wide range of land birds, including the endemic Cobb's wren and inquisitive striated caracara, contribute to an abundance of wildlife that will leave nature lovers breathless.

## Day 19-22: South Atlantic Ocean

The ocean breezes gradually get warmer as we sail north through the South Atlantic Ocean. As we enter deeper waters, we are on constant lookout for killer whales, blue whales, sei whales and southern right whales. This is also the time for festivities such as the Captain's Farewell Cocktail and the end-of-voyage slideshow.

## Day 23: Disembarkation in Buenos Aires (Argentina)

Right after the disembarkation, we provide a group transfer to Ezeiza (EZE) - International Airport or central location in Buenos Aires. As you look back on

Wild Earth Travel

*Small Ships, Big Adventures*

0800 945 3327 (within New Zealand) | +64 (0) 3 365 1355 | 1800 107 715 (within Australia)

[info@wildearth-travel.com](mailto:info@wildearth-travel.com) | [wildearth-travel.com](http://wildearth-travel.com)



# Wild Earth Travel

*Small Ships, Big Adventures*



**wildearth-travel.com**

**info@wildearth-travel.com**

your wonderful experience, you may already be looking forward to your next polar adventure!

Note: we recommend to schedule your return flight from Buenos Aires (EZE) with a departure time that is not earlier than 7pm.

Please note:

Itineraries are subject to change.



Wild Earth Travel

*Small Ships, Big Adventures*

**0800 945 3327** (within New Zealand) | +64 (0) 3 365 1355 | **1800 107 715** (within Australia)

info@wildearth-travel.com | **wildearth-travel.com**

# Wild Earth Travel

*Small Ships, Big Adventures*



[wildearth-travel.com](http://wildearth-travel.com)

[info@wildearth-travel.com](mailto:info@wildearth-travel.com)

## YOUR SHIP: SEA SPIRIT

<b>YOUR SHIP:</b>	<b>Sea Spirit</b>
<b>VESSEL TYPE:</b>	<b>Small Ship Expedition</b>
<b>LENGTH:</b>	<b>90 metres</b>
<b>PASSENGER CAPACITY:</b>	<b>114</b>
<b>BUILT/REFURBISHED:</b>	<b>1992 / 2017</b>

Like some of the birds we see in the Arctic and Antarctica, our m/v Sea Spirit is migratory and follows the sun, northbound in the summer and southbound in the winter, always ready for spontaneous discoveries - a pod of whales, a family of polar bears or a glaciated mountain vista. She is highly maneuverable and capable of navigating the narrow fjords of East Greenland and entering the small bays of Spitsbergen.

Onboard, we create a friendly and welcoming atmosphere for all our guests. They are united by one goal - to have a memorable wilderness experience and to become real polar adventurers. We believe that first-hand travel to such places makes one an ambassador for conservation, and helps strengthen our resolve to protect these natural environments for future generations.

Public areas include: Reception, Restaurant, Bar, Outdoor Bistro, Club Lounge, Library, Presentation Lounge, Infirmary, Gym, Bridge.

We have open Bridge policy. Talk to the Captain and officers. Watch landscapes from this special angle of view. Fix your location at a map of your expedition.



Wild Earth Travel

*Small Ships, Big Adventures*

0800 945 3327 (within New Zealand) | +64 (0) 3 365 1355 | 1800 107 715 (within Australia)

[info@wildearth-travel.com](mailto:info@wildearth-travel.com) | [wildearth-travel.com](http://wildearth-travel.com)

# Wild Earth Travel

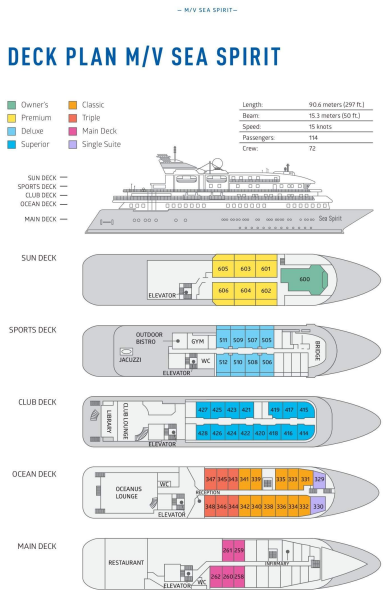
*Small Ships, Big Adventures*



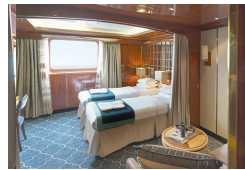
[wildearth-travel.com](http://wildearth-travel.com)

[info@wildearth-travel.com](mailto:info@wildearth-travel.com)

## INSIDE YOUR SHIP



Classic Suite



Deluxe Suite



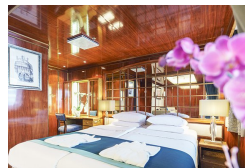
Main Deck Suite



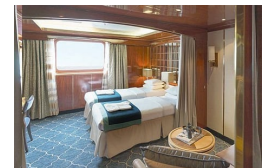
Owner's Suite



Premium Suite



Single Suite



Superior Suite



Triple Classic



# Wild Earth Travel

*Small Ships, Big Adventures*

[wildearth-travel.com](http://wildearth-travel.com)

[info@wildearth-travel.com](mailto:info@wildearth-travel.com)

## PRICING

10-Mar-2027 to 01-Apr-2027

Triple Classic	26495 AUD pp
Main Deck Suite	34895 AUD pp
Classic Suite	37395 AUD pp
Superior Suite	38095 AUD pp
Deluxe Suite	42295 AUD pp
Premium Suite	45495 AUD pp
Single Suite	52295 AUD pp
Owner's Suite	57295 AUD pp

## Optional extras & upgrades

### Kayaking

Antarctica is a paddlers' paradise. The White Continent boasts some of the world's most impressive landscapes and is home to incredible marine wildlife. Sea Kayak Club members will have the opportunity to paddle through tranquil waters filled with glittering icebergs and porpoising penguins while surrounded by magnificent glaciers and mountains. The protected and picturesque waters of the Antarctic Peninsula offer the best sea kayaking opportunities in Antarctica. Sea Kayak Club is also offered on selected voyages to South Georgia, where members may have the rare opportunity to encounter the island's legendary abundance of wildlife from a kayaker's perspective, if the area's notoriously inclement weather permits.

### Photography - Free option

The polar regions are a photographer's dream, teeming with breathtaking landscapes and incredible wildlife. Whether you're a beginner or a seasoned pro, you'll find endless opportunities to capture perfect shots. To enhance your experience, our expedition photographer will host onboard masterclasses, offer tips during landings, and create a stunning slideshow of highlights to enjoy at the end of the cruise. After the journey, you'll receive this slideshow along with a curated selection of photos to relive the adventure. Our goal is to inspire and support you, ensuring you capture extraordinary images that you'll treasure forever.

Wild Earth Travel

*Small Ships, Big Adventures*

0800 945 3327 (within New Zealand) | +64 (0) 3 365 1355 | 1800 107 715 (within Australia)

[info@wildearth-travel.com](mailto:info@wildearth-travel.com) | [wildearth-travel.com](http://wildearth-travel.com)