

# Wild Earth Travel

*Small Ships, Big Adventures*

**wildearth-travel.com**

**info@wildearth-travel.com**

## ANTARCTIC PENINSULA: FLY THE DRAKE 10 DAY EXPEDITION

Welcome to Aurora Expeditions' Antarctic Peninsula: Fly the Drake expedition.

Separating the southern tip of the South American continent from the Antarctic Peninsula region is the Drake Passage, where the mighty Pacific and Atlantic oceans converge. This narrow and impossibly deep waterway creates unpredictable conditions for navigators, who put their skills to the test when the passage is at its most turbulent.

For expeditioners who prefer to focus their energy on adventures in Antarctica, flying over the Drake Passage in both directions is the ideal way to reach the white continent. In the safe hands of experienced pilots, your pulse will quicken as you glimpse the first icebergs in the Southern Ocean, where your vessel awaits, ready to take you on an exhilarating adventure.



### ITINERARY

#### Day 1 Arrive Punta Arenas

Arrive in Punta Arenas, where you will be met by a representative of Aurora Expeditions and transferred to our hotel. We ask that you arrive no later than 2.00 pm so that you may attend our important briefing this evening.

Please visit the Aurora Expeditions hospitality desk in the lobby between 2.00

Wild Earth Travel

*Small Ships, Big Adventures*

**0800 945 3327** (within New Zealand) | +64 (0) 3 365 1355 | **1800 107 715** (within Australia)

info@wildearth-travel.com | **wildearth-travel.com**

# Wild Earth Travel

*Small Ships, Big Adventures*

**wildearth-travel.com**

**info@wildearth-travel.com**

pm - 6.00 pm to collect your luggage cabin tags. Our team will confirm details regarding your embarkation day, answer any questions and provide you with information about where to dine or purchase last minute items.

Overlooking the Straits of Magellan, the city sits astride one of the world's most historic trade routes. Today, Punta Arenas reflects a great blend of cultural backgrounds, from English sheep ranchers to Portuguese sailors. It remains an utterly fascinating testament to Chile's rich history. Modern day Punta Arenas is home to many popular restaurants, and bars, offering a mix of local and international fare (meals at your own expense today).

At 7.00 pm this evening, meet your fellow expeditioners at a voyage briefing where we will reconfirm your transfer times for tomorrow, explain the procedures for your flight to King George Island and outline important IAATO regulations for visitors to Antarctica.

## Day 2 Fly to King George Island, Embarkation

This morning we will be transferred to Punta Arenas airport for our charter flight to King George Island, Antarctica (weather permitting). The flight will take approximately one hour and forty-five minutes. On arrival into King George Island our expedition team is on hand to greet you and to prepare you for your Zodiac transfer to the vessel. You will have time to settle into your cabin before our important safety briefings.

Note: King George Island is located at the northern part of the Antarctic Peninsula in the South Shetland Islands and is one of the most remote places on Earth. A clear sky with perfect visibility is required for safe take-off and landing. A contingency plan will be applied to your itinerary should your flights not proceed today. Your safety is our utmost priority. We apologise in advance for any delays caused due to this unpredictable situation. Please refer to our terms and conditions for a more detailed explanation.

## Days 3-8 Antarctic Peninsula

It's almost impossible to describe the feeling of arriving in Antarctica. Spotting your first iceberg and taking a deep breath of some of the most fresh, crisp air on earth is an experience that will stay with you forever.

Once we arrive, the western side of the Antarctic Peninsula and the South

Shetland Islands are ours to explore, and we have a host of choices available to us. Because we are so far south, we will experience approximately 18-24 hours of daylight and the days can be as busy as you wish.

Your experienced expedition team, who have made countless journeys to this area, will use their expertise to design your voyage from day to day, choosing the best options based on the prevailing weather, ice conditions and wildlife opportunities.

We generally make landings or Zodiac excursions twice a day. You will want to rug up before joining Zodiac cruises along spectacular ice cliffs or among grounded icebergs, keeping watch for whales, seals and porpoising penguins. Zodiacs will also transport you from the ship to land, where you can visit penguin rookeries, discover historic huts and explore some of our favourite spots along the peninsula.

While ashore we aim to stretch our legs, wandering along pebbly beaches or perhaps up snow-covered ridgelines to vantage points with mountains towering overhead and ice-speckled oceans below. If you have chosen an optional activity, you will have the option to do that whenever conditions allow, and of course keen polar plungers will have the chance to fully immerse themselves in polar waters - conditions permitting!

In addition to Zodiac cruises and shore excursions, we may ship cruise some of the narrow, dramatic straits separating offshore islands from the mainland, or linger in scenic bays to watch whales travelling or feeding. Keep an ear out for the creak and deep rumble of glaciers as they carve their way from summit to sea. Take a quiet moment to experience the wonder of this incredible white continent.

## Day 9 Fly King George Island to Punta Arenas

As we approach Frei Base on King George Island, it is time to farewell Antarctica and our amazing adventure before boarding our flight (approximately one hour and forty-five minutes) to Punta Arenas, Chile. There is time for reflection and discussion about what we have seen and experienced. We hope you become ambassadors for Antarctica telling your family, friends and colleagues about your journey to this magical place, advocating for its conservation and preservation so that they might one day visit the region to experience what you have been lucky to see and do here.

From Punta Arenas airport, you will be transferred to our group hotel for an

Wild Earth Travel  
*Small Ships, Big Adventures*

**0800 945 3327** (within New Zealand) | +64 (0) 3 365 1355 | **1800 107 715** (within Australia)

info@wildearth-travel.com | wildearth-travel.com



# Wild Earth Travel

*Small Ships, Big Adventures*

**wildearth-travel.com**

**info@wildearth-travel.com**

overnight stay.

Note: King George Island is located at the northern tip of the Antarctic Peninsula in the South Shetland Islands and is one of the most remote places on Earth. A clear sky with perfect visibility is required for safe take-off and landing. We apologise in advance for any possible delays.

Accommodation: To be advised

## Day 10 Depart Punta Arenas

After breakfast, bid a fond farewell to your fellow travellers as we continue our onward journeys, hopefully with a newfound sense of the immense power of nature (breakfast included). A transfer to the airport is included in the voyage fare.

Note: Should your flight not proceed due to local conditions; you will remain on the ship until it is deemed achievable to return to Punta Arenas. Refer to our terms and conditions for further details.

Please note:

Itineraries are subject to change.

**Wild Earth Travel**  
*Small Ships, Big Adventures*

**0800 945 3327** (within New Zealand) | +64 (0) 3 365 1355 | **1800 107 715** (within Australia)

info@wildearth-travel.com | **wildearth-travel.com**



# Wild Earth Travel

*Small Ships, Big Adventures*

**wildearth-travel.com**

**info@wildearth-travel.com**

## YOUR SHIP: DOUGLAS MAWSON

<b>YOUR SHIP:</b>	<b>Douglas Mawson</b>
<b>VESSEL TYPE:</b>	<b>Small Ship Expedition</b>
<b>LENGTH:</b>	
<b>PASSENGER CAPACITY:</b>	<b>154</b>
<b>BUILT/REFURBISHED:</b>	<b>2025</b>

Length: 104.4 m

Designed for global discovery

Adventure has a new name. Setting sail in 2025, our new state-of-the-art ship, the Douglas Mawson, is the last in a line of purpose-built vessels that have redefined small ship expedition cruising.

Named after the legendary Australian geologist and explorer, our new small ship embodies Mawson's pioneering spirit and is designed for global discovery. Featuring the revolutionary Ulstein X-BOW® and purpose-built with enhanced sustainability features, it takes on average 154 adventurers to the world's wildest places in smooth, quiet comfort. It boasts our most extensive range of cabins yet, including a range of single cabins. The Douglas Mawson features a host of amenities to help you connect with like-minded travellers and elevate your time onboard our floating base camp for adventure. After a long day of exploring, head to the back deck to swim in the heated outdoor swimming pool, find a sun bed to read on, or soak in one of two Jacuzzis. Work up a sweat in the gym before unwinding in the sauna, resolve to learn something new in the Citizen Science Centre, then enjoy a delicious meal with new

and old friends in one of two restaurants. Or, with multiple observation areas throughout the ship, simply relax in comfort while you keep watch for wildlife or incredible landscapes unfold before you.

While enjoying the luxurious amenities onboard, you can rest assured that our aim to get you off the ship to explore the natural environment as much as possible through our unique activities program remains unchanged.

Newest Ulstein X-BOW®

The Douglas Mawson features the newest streamlined Ulstein X-BOW®, designed for global discovery. The revolutionary design cuts through the swell, offering unrivalled stability on ocean crossings and helping to reduce fuel consumption. It's just one of the many sustainability features that helps us travel more responsibly.

Heated Pool, Jacuzzis & Sauna

In between landings, enjoy access to the onboard gym or unwind in the sauna. Or head to the back deck to swim in the heated outdoor pool, enjoy a drink at the pool bar, or soak in one of two Jacuzzis, watching the world go by.

Leading Technology

The Douglas Mawson is at the cutting edge of nautical technology, fitted with industry-leading technology including world-class return-to-port equipment. The ship also features a medical clinic designed for use in remote areas.

Built for Adventure

The Douglas Mawson features Zodiac access points and an activities platform, making boarding the Zodiacs as quick, efficient and safe as possible, minimising wait times and getting



# Wild Earth Travel

*Small Ships, Big Adventures*

**wildearth-travel.com**

**info@wildearth-travel.com**

you closer to the action for longer. In our mudroom you will have access to lockers to store gear & boots and rapid drying areas for clothing.

#### More Cabin Choices

The Douglas Mawson features 11 different types of cabins, including a range of spacious single berth cabins - all adorned with elegant Nordic interior design features.

#### Multiple Observation Areas

As you explore the ship you will find indoor lounge areas with floor-to ceiling windows, and multiple open decks with expansive 270-360 degree views. The Glass Atrium Lounge inside the bow is a fantastic place to sit and watch for wildlife - with a drink in hand. There is no shortage of spaces to take in the majesty of the incredible world outside!

#### Lecture Theatre

On all expeditions you will meet naturalists and local specialists, who offer presentations on their area of expertise to enhance your appreciation of the destination you are exploring.

Join the team in the lecture theatre for presentations covering a broad range of topics to suit every interest, from history and culture to biology and climate change. Regardless of the topic, they all have one thing in common: they all aim to engage, educate, entertain and turn you into an ambassador for the planet.

#### Citizen Science Center & Lounge

Learn more about the world and the unique destinations Aurora visits by visiting the onboard naturalist and Expedition Team in the world-class Citizen Science Center. You will be rewarded for your thirst for knowledge with one of the best views on the ship.

#### Library

With floor-to-ceiling windows, the library is a peaceful sanctuary where you can find non-fiction books to read up on the day's

destinations, use a public laptop to organise your photos or play board games with newfound friends.

Choose from our range of informative non-fiction titles, wildlife guidebooks, travel journals, novels and a selection of children's books and board games.

Wildlife guides, books and binoculars can also be found on the observation lounge on Deck 7.

#### Mudroom

No need to take your wet expedition gear back to your cabin to dry. Keep your cabin warm and cosy by leaving your outer jackets and pants in the mudroom.

The mudroom is your launchpad for all shore excursions and activities. Here, you will have access to a locker when you can hang your gear up to dry, and store your boots between excursions.

#### Swimming Pool & Jacuzzis

There are two Jacuzzis on the top outside deck which offer amazing views of the world outside, a heated outdoor pool surrounded by sun beds you can relax on after a long day of exploring, and a pool bar.

#### Gym & Sauna

During your voyage, enjoy complimentary access to the gym or visit our sauna, which we highly recommend after the Polar Plunge!

#### Restaurants

One of the most important parts of any expedition is the food! Whatever adventures the day holds, you will be fuelled-up with hearty meals and delicious morning/afternoon teas cooked by our onboard chefs.

Meals are a great time to soak up the expedition camaraderie in our open seating dining area. Share stories with your fellow travellers and ask our expedition team questions that may have



# Wild Earth Travel

*Small Ships, Big Adventures*

**wildearth-travel.com**

**info@wildearth-travel.com**

come up during the day.

Tea, coffee and snacks are available 24 hours a day, and our chefs offer different menu options and courses for each meal. Enjoy the range of house wine, beers and soft drinks included with dinner after a long day in the wild.

We also invite you to join your captain and expedition team for informal Captain's Farewell drinks, with complimentary beverages and cocktail appetisers, followed by a 3 course meal.

## Bars & Lounges

Communal meeting areas have always played a major role in fostering the warm camaraderie on board our ships. They are the heart of the expedition, where people meet to share tales from the day, swap photos, keep an eye out for wildlife and watch the sun go down.

The bars and lounges on board are refined yet inviting places to gather, with floor-to-ceiling windows offering stunning views, and of course friendly bartenders to shoot the breeze with.



reeze with.

Wild Earth Travel

*Small Ships, Big Adventures*

**0800 945 3327** (within New Zealand) | +64 (0) 3 365 1355 | **1800 107 715** (within Australia)

info@wildearth-travel.com | **wildearth-travel.com**

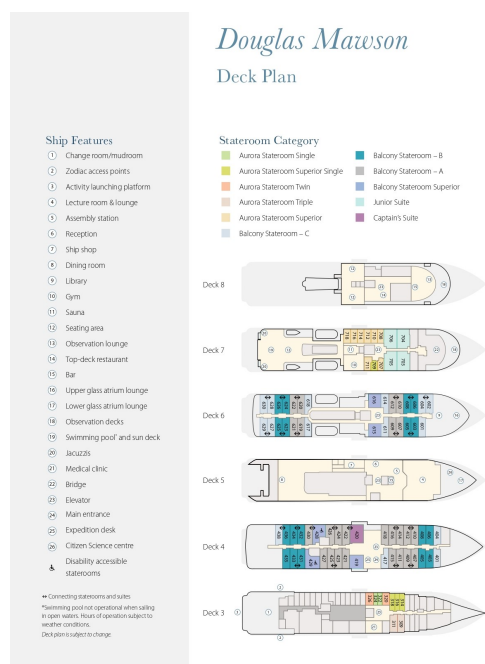
# Wild Earth Travel

*Small Ships, Big Adventures*

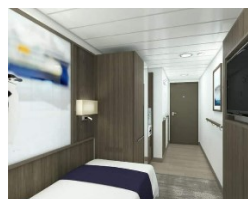
[wildearth-travel.com](http://wildearth-travel.com)

[info@wildearth-travel.com](mailto:info@wildearth-travel.com)

## INSIDE YOUR SHIP



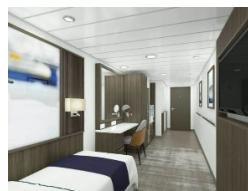
Aurora Stateroom Single



Aurora Stateroom Superior



Aurora Stateroom Superior Single



Aurora Stateroom Triple



Aurora Stateroom Twin



Balcony Stateroom Category A



Balcony Stateroom Category B



Balcony Stateroom Category C





# Wild Earth Travel

*Small Ships, Big Adventures*



**wildearth-travel.com**

**info@wildearth-travel.com**

## PRICING

**13-Jan-2027 to 22-Jan-2027**

<b>Aurora Stateroom Triple</b>	<b>24595 USD pp</b>
<b>Aurora Stateroom Twin</b>	<b>25395 USD pp</b>
<b>Aurora Stateroom Superior</b>	<b>26795 USD pp</b>
<b>Balcony Stateroom Category C</b>	<b>27495 USD pp</b>
<b>Balcony Stateroom Category B</b>	<b>28995 USD pp</b>
<b>Aurora Stateroom Single</b>	<b>29695 USD pp</b>
<b>Balcony Stateroom Category A</b>	<b>31195 USD pp</b>
<b>Aurora Stateroom Superior Single</b>	<b>32595 USD pp</b>
<b>Balcony Stateroom Superior</b>	<b>33995 USD pp</b>
<b>Junior Suite</b>	<b>40595 USD pp</b>
<b>Captain's Suite</b>	<b>46295 USD pp</b>

## Optional extras & upgrades

**Sea Kayaking**

**Snorkelling**

**Paddling**



**Wild Earth Travel**

*Small Ships, Big Adventures*

**0800 945 3327** (within New Zealand) | +64 (0) 3 365 1355 | **1800 107 715** (within Australia)

info@wildearth-travel.com | **wildearth-travel.com**