

Wild Earth Travel

Small Ships, Big Adventures

wildearth-travel.com

info@wildearth-travel.com

ANTARCTIC PENINSULA: AN EXPLORER'S EXPEDITION

Experience All of Antarctica 's Greatest Highlights

Antarctica offers an overabundance of riches, from breathtaking Orca and Humpback whales to smile-inducing penguins of multiple species; from huge, well-sculpted icebergs to mesmerizing glaciers glowing blue from within. On this voyage, we'll introduce you to all that and more, as Antarctica always throws in a few surprises for us. If you're looking for a perfect introduction to this life-changing continent in a time-efficient voyage, traveling with a team that's committed to immersing you in all its glorious details, this itinerary just might have your name on it.



ITINERARY

Day 1: Arrive and explore in Ushuaia

After a friendly welcome at the airport and a transfer to the luxurious Arakur Ushuaia Resort & Spa, take some time to unwind or explore the southernmost city in the world, Ushuaia. (In the unlikely event that you can't be accommodated at the Arakur, you'll unwind at another of Ushuaia's top luxury hotels.)

Our optional evening briefing is your opportunity to ask questions and meet some of your fellow explorers.

Wild Earth Travel

Small Ships, Big Adventures

0800 945 3327 (within New Zealand) | +64 (0) 3 365 1355 | 1800 107 715 (within Australia)

info@wildearth-travel.com | wildearth-travel.com

Wild Earth Travel

Small Ships, Big Adventures



wildearth-travel.com

info@wildearth-travel.com

Day 2: All Aboard!

Spend your morning relaxing at the hotel, visiting a museum, or exploring the shops in Ushuaia, before our mid-afternoon escort to the ship. Our Expedition Team and ship staff will welcome you on board and get you settled in, followed by a safety and orientation briefing and our Captain's welcome dinner. We're on our way to Antarctica!

Days 3-4: Drake Passage

Join our Polar Experts as they share their vast knowledge of Antarctica, from its enchanting wildlife to its bold history. Participate in our pioneering Citizen Science program or sit back and take in this fabled journey while catching glimpses of rarely seen wildlife. Keep your binoculars handy to identify the many seabirds that escort our ship as we cross the Antarctic Convergence into Antarctica's waters and noticeably cooler temperatures.

Day 5: South Shetland Islands

Over time, the volcanic activity of the South Shetland Islands has created a geology unlike any other. Here, you can expect a spectacular display of mountains, glaciers, and wildlife, including Chinstrap and Gentoo penguins, and it's not uncommon to share the water's edge with Elephant and Fur seals. Whales are often spotted as well. So, we'll settle into our Zodiacs and spend most of our day exploring. And kayakers, it's time to get your first taste of gliding just inches off the pristine Antarctic water. Whether on land or sea, in Zodiac or kayak, be prepared for a fully immersive introduction to this incomparable part of the world.

Days 6-8: Glorious Antarctica

Here's our chance to explore any number of picturesque bays and landing sites, while maneuvering through iceberg-rich channels and into wildlife-rich waters. We'll likely be joined by numerous species of enchanting penguins, seals, and whales, both in the sea and along the rugged coastlines. And there will be great opportunities to stop at several active scientific bases and historic landing sites during our typical two-a-day outings. A night of camping under the stars is also an unforgettable highlight for those who sign up. Our focus is

always on the longest and most adventurous off-ship experience, so be prepared to take in all that Antarctica has to offer.

Days 9-10: Drake Passage

We leave this magical place and make our way north, once again crossing the legendary Drake Passage. We have one last hurrah as we celebrate the conclusion of our expedition with a special slideshow and a final meal together.

Day 11: Ushuaia Disembarkation

With huge smiles on weary, content faces, we disembark in the morning, letting you catch a flight to Buenos Aires or stay in Ushuaia for more sights and adventure.

Please Note:

Itineraries are subject to change.

Wild Earth Travel

Small Ships, Big Adventures

0800 945 3327 (within New Zealand) | +64 (0) 3 365 1355 | 1800 107 715 (within Australia)

info@wildearth-travel.com | wildearth-travel.com

Wild Earth Travel

Small Ships, Big Adventures

wildearth-travel.com

info@wildearth-travel.com

YOUR SHIP: OCEAN ALBATROS

YOUR SHIP:	Ocean Albatros
VESSEL TYPE:	Luxury Expedition
LENGTH:	104.4 m
PASSENGER CAPACITY:	169 (95 cabins)
BUILT/REFURBISHED:	2022

Ocean Albatros is built for serious Polar travel, pairing long-honed expedition capability with a modern, stabilised design. Its X-BOW structure delivers a markedly smoother ride and enables confident movement through deeper ice, giving passengers access to remote regions that traditional vessels cannot approach. Spacious staterooms with wide views, extensive observation areas, near-water hydraulic platforms and a fast, heated mudroom support uninterrupted exploration. The atmosphere on board remains streamlined and functional, with amenities such as Jacuzzis, sauna, spa, gym, library and a generous lounge layout arranged to maximise comfort without distracting from the environment outside.

Efficiency and sustainability are embedded into the ship's operations. Dual diesel-electric engines reduce emissions significantly while maintaining reliable range and power, enabling the vessel to operate with a carbon footprint roughly half that of older expedition ships. Most cabins include private balconies, communal areas are deliberately generous, and dining spans both a full restaurant and a bistro. Expedition logistics - zodiacs, science activities, photographic support and medical readiness - are built into the core offering, ensuring a

consistent, competent experience from the Arctic to Antarctica.



Antarctica.

Wild Earth Travel

Small Ships, Big Adventures

0800 945 3327 (within New Zealand) | +64 (0) 3 365 1355 | 1800 107 715 (within Australia)

info@wildearth-travel.com | wildearth-travel.com

Wild Earth Travel

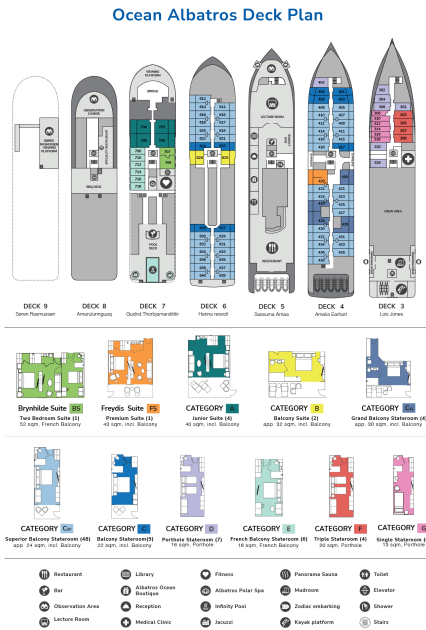
Small Ships, Big Adventures



wildeath-travel.com

info@wildeath-travel.com

INSIDE YOUR SHIP



Balcony Stateroom



Brynhilde Suite



Freydis Suite



Grand Balcony Stateroom



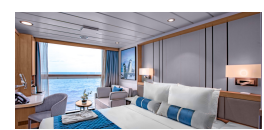
Porthole Stateroom



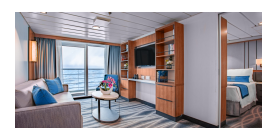
Balcony Suite



French Balcony Stateroom



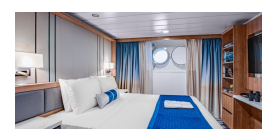
Freydis Suite/Premium Suite



Junior Suite



Single Stateroom



Wild Earth Travel

Small Ships, Big Adventures

wildearth-travel.com

info@wildearth-travel.com

PRICING

21-Nov-2026 to 01-Dec-2026

Triple Stateroom	10195 USD pp
French Balcony Stateroom	12595 USD pp
Superior Balcony Stateroom	13595 USD pp
Grand Balcony Stateroom	14295 USD pp
Single Stateroom	15295 USD pp
Balcony Suite	15695 USD pp
Junior Suite	16395 USD pp
Freydis Suite/Premium Suite	19095 USD pp
Balcony Stateroom	0 pp

07-Jan-2027 to 17-Jan-2027

French Balcony Stateroom	15495 USD pp
Balcony Stateroom	16295 USD pp
Superior Balcony Stateroom	16795 USD pp
Grand Balcony Stateroom	17595 USD pp
Balcony Suite	19295 USD pp
Junior Suite	20095 USD pp
Freydis Suite/Premium Suite	23495 USD pp
Triple Stateroom	0 pp
Single Stateroom	0 pp

12-Jan-2027 to 22-Jan-2027

Triple Stateroom	12595 USD pp
Porthole Stateroom	14695 USD pp
French Balcony Stateroom	15495 USD pp
Superior Balcony Stateroom	16795 USD pp
Grand Balcony Stateroom	17595 USD pp
Balcony Suite	19295 USD pp
Junior Suite	20095 USD pp
Freydis Suite	23495 USD pp
Brynhilde Suite	28495 USD pp

28-Feb-2027 to 10-Mar-2027

Triple Stateroom	11095 USD pp
Porthole Stateroom	12895 USD pp
French Balcony Stateroom	13595 USD pp
Superior Balcony Stateroom	14695 USD pp
Grand Balcony Stateroom	15495 USD pp
Balcony Suite	16895 USD pp
Junior Suite	17695 USD pp
Freydis Suite	20595 USD pp
Brynhilde Suite	24995 USD pp

Wild Earth Travel

Small Ships, Big Adventures

0800 945 3327 (within New Zealand) | +64 (0) 3 365 1355 | 1800 107 715 (within Australia)

info@wildearth-travel.com | wildearth-travel.com

Wild Earth Travel

Small Ships, Big Adventures

wildearth-travel.com

info@wildearth-travel.com

PRICING

03-Nov-2027 to 13-Nov-2027

Triple Stateroom	11295 USD pp
French Balcony Stateroom	13895 USD pp
Balcony Stateroom	14495 USD pp
Superior Balcony Stateroom	14995 USD pp
Grand Balcony Stateroom	15695 USD pp
Single Stateroom	16895 USD pp
Balcony Suite	17195 USD pp
Junior Suite	17995 USD pp
Freydis Suite/Premium Suite	20995 USD pp

12-Nov-2027 to 22-Nov-2027

Triple Stateroom	11595 USD pp
French Balcony Stateroom	14295 USD pp
Balcony Stateroom	14995 USD pp
Superior Balcony Stateroom	15495 USD pp
Grand Balcony Stateroom	16195 USD pp
Single Stateroom	17395 USD pp
Balcony Suite	17795 USD pp
Junior Suite	18495 USD pp
Freydis Suite/Premium Suite	21595 USD pp

06-Dec-2027 to 16-Dec-2027

Triple Stateroom	12195 USD pp
Porthole Stateroom	14195 USD pp
French Balcony Stateroom	14995 USD pp
Superior Balcony Stateroom	16195 USD pp
Grand Balcony Stateroom	16995 USD pp
Balcony Suite	18595 USD pp
Junior Suite	19395 USD pp
Freydis Suite	22695 USD pp
Brynhilde Suite	27495 USD pp

04-Jan-2028 to 14-Jan-2028

Triple Stateroom	12795 USD pp
Porthole Stateroom	14995 USD pp
French Balcony Stateroom	15795 USD pp
Superior Balcony Stateroom	17095 USD pp
Grand Balcony Stateroom	17995 USD pp
Balcony Suite	19695 USD pp
Junior Suite	20495 USD pp
Freydis Suite	23895 USD pp
Brynhilde Suite	29095 USD pp

Wild Earth Travel
Small Ships, Big Adventures

0800 945 3327 (within New Zealand) | +64 (0) 3 365 1355 | 1800 107 715 (within Australia)

info@wildearth-travel.com | wildearth-travel.com

Wild Earth Travel

Small Ships, Big Adventures

wildearth-travel.com

info@wildearth-travel.com

PRICING

13-Jan-2028 to 23-Jan-2028

Triple Stateroom	12695 USD pp
Porthole Stateroom	14795 USD pp
French Balcony Stateroom	15695 USD pp
Superior Balcony Stateroom	16895 USD pp
Grand Balcony Stateroom	17795 USD pp
Balcony Suite	19495 USD pp
Junior Suite	20295 USD pp
Freydis Suite	23695 USD pp
Brynhilde Suite	28795 USD pp

14-Jan-2028 to 24-Jan-2028

Triple Stateroom	12795 USD pp
French Balcony Stateroom	15795 USD pp
Balcony Stateroom	16595 USD pp
Superior Balcony Stateroom	17095 USD pp
Grand Balcony Stateroom	17895 USD pp
Single Stateroom	19195 USD pp
Balcony Suite	19595 USD pp
Junior Suite	20495 USD pp
Freydis Suite/Premium Suite	23895 USD pp

31-Jan-2028 to 10-Feb-2028

Triple Stateroom	12795 USD pp
Porthole Stateroom	14895 USD pp
French Balcony Stateroom	15795 USD pp
Superior Balcony Stateroom	17095 USD pp
Grand Balcony Stateroom	17895 USD pp
Balcony Suite	19595 USD pp
Junior Suite	20495 USD pp
Freydis Suite	23895 USD pp
Brynhilde Suite	28995 USD pp

12-Feb-2028 to 22-Feb-2028

Triple Stateroom	12595 USD pp
French Balcony Stateroom	15495 USD pp
Balcony Stateroom	16295 USD pp
Superior Balcony Stateroom	16795 USD pp
Grand Balcony Stateroom	17595 USD pp
Single Stateroom	18895 USD pp
Balcony Suite	19295 USD pp
Junior Suite	20095 USD pp
Freydis Suite/Premium Suite	23495 USD pp

Wild Earth Travel
Small Ships, Big Adventures

0800 945 3327 (within New Zealand) | +64 (0) 3 365 1355 | 1800 107 715 (within Australia)

info@wildearth-travel.com | wildearth-travel.com

Wild Earth Travel

Small Ships, Big Adventures



wildearth-travel.com

info@wildearth-travel.com

PRICING

21-Feb-2028 to 02-Mar-2028

Triple Stateroom	12295 USD pp
French Balcony Stateroom	15095 USD pp
Balcony Stateroom	15795 USD pp
Superior Balcony Stateroom	16295 USD pp
Grand Balcony Stateroom	17095 USD pp
Single Stateroom	18395 USD pp
Balcony Suite	18795 USD pp
Junior Suite	19595 USD pp
Freydis Suite/Premium Suite	22795 USD pp

Optional extras & upgrades

Camping 395 USD

Discover Kayaking 350 USD

Snowshoeing 150 USD

Immersive Kayaking 1195 USD

Immersive Photography 495 USD

Wild Earth Travel
Small Ships, Big Adventures

0800 945 3327 (within New Zealand) | +64 (0) 3 365 1355 | 1800 107 715 (within Australia)

info@wildearth-travel.com | wildearth-travel.com