

Wild Earth Travel

Small Ships, Big Adventures

wildearth-travel.com

info@wildearth-travel.com

ANTARCTIC CIRCLE 18 DAY EXPEDITION CRUISE

This is one of our longest expeditions in Antarctica, departing at the peak of its summer and with an attempt to sail below the Antarctic Circle to try to reach the usually secluded yet magnificent Marguerite Bay. Begin and end in Buenos Aires The Argentine capital is the birthplace of tango, home to passionate football fans, and a world centre for all things cultural and culinary. After spending one exciting night here at the start, you'll head to Ushuaia to board your expedition ship and continue your journey south. When we cross the Drake Passage, the weather and sea ice here at the edge of the world can be unpredictable. That's why we don't have a fixed itinerary when we travel to Antarctica, but instead carefully monitor the current conditions and decide on the best sites for each day. It's what we like to call the expedition factor. Antarctica: a place of pure amazement Get ready for ten full days in Antarctica, being in awe of immense icebergs and whales, spotting many species of seabird and seeing colonies of penguins with their chicks. The season's milder weather may have created a path through the sea ice south of the Antarctic Circle, all the way to Marguerite Bay to possibly visit the remote research stations there. Join the Expedition Team in lectures, ice-cruising and landings along the way.



ITINERARY

DAY 1 The beat of Buenos Aires

Wild Earth Travel

Small Ships, Big Adventures

0800 945 3327 (within New Zealand) | +64 (0) 3 365 1355 | **1800 107 715** (within Australia)

info@wildearth-travel.com | wildearth-travel.com

Wild Earth Travel

Small Ships, Big Adventures

wildearth-travel.com

info@wildearth-travel.com

Fire and flavour in Argentina's capital With its fusion of faded European splendour and Latin American panache, an overnight stay in Buenos Aires is the ideal way to start your Antarctic adventure. Why not arrive early to explore more or join our optional Pre-Programme to tour wild Patagonia. Take in the beautiful architecture. Visit the beautiful opera house of Teatro Colon, the pretty-in-pink Casa Rosada, and the National Museum of Fine Arts, displaying works by Van Gogh, Monet and Picasso. Explore the colourful street museum in La Boca with its buzzy markets and restaurants. Or take in a tango show before savouring delicious Argentinian beef in one of the city's steakhouses.

DAY 2 Setting sail from Ushuaia

Flying south to Ushuaia where you'll board your ship Your adventure begins with an early morning flight to Ushuaia, where you'll meet your hybrid-powered expedition ship, MS Fridtjof Nansen, specially designed for sustainable cruising in polar waters. This bustling port is the capital of Argentina's Tierra del Fuego province. Set against the magnificent backdrop of the Martial Glacier, Ushuaia vies for the title of the world's southernmost city. After a briefing from your Expedition Team, you'll have time to settle into your cabin and explore the comforts and amenities on board. Later, you'll join your Expedition Team for a welcome dinner.

DAY 3-4 Get set for Antarctica

Centre on science before your Antarctic adventure As we cruise from Ushuaia to Antarctica through the Drake Passage, the Expedition Team will equip you with all you need to make the most of your polar expedition. Visit the onboard Science Center and find out what lies ahead. Listen to experts talk passionately about Antarctica's history, the science beneath the ice, and the impact of climate change and plastic pollution. You'll learn how to make your visit as safe and as sustainable as possible, and about the Citizen Science projects you can join. Relax and meet your fellow adventurers. Take an invigorating swim, enjoy a spa treatment and look out for icebergs, whales and albatrosses.

DAY 5-15 Antarctica: another world

Experience Antarctica in all its natural majesty Nothing quite prepares you for it. Surrounded by looming glaciers, and icebergs the size of floating cathedrals,

Antarctica will fill you with wonder. Perhaps the most surprising part of Antarctica is the silence. It's a stillness that's broken every so often by the locals - the wildlife. Huge colonies of penguins huddle on the ice floes, avoiding the cunning leopard seals that hunt them. Majestic, migrating whales glide among amazing icebergs, hunting the shoals of krill they feed on. Bird enthusiasts should look skywards to spot some of 45 species of Antarctic seabirds that live here, such as skuas, jaegers, petrels and terns. Here, nature is king and we are mere observers. Our experienced captain will continually monitor conditions to create the best possible itinerary for your adventure. You'll spend an exciting 11 days busily exploring several of many possible landing sites. Rest assured, each day will offer something different and thrilling. We'll aim for Marguerite Bay and explore islands along the way, and you'll join the Expedition Team on landings and ice cruises whenever opportunities present themselves. You may even get a chance to go kayaking among the icebergs on an optional activity. Back on board, join Citizen Science projects and onboard lectures, where you'll learn more about polar exploration, this precious habitat, and how we can all protect it.

DAY 16-17 Back through Drake Passage

Your adventure draws to a close After 11 days of exhilarating exploration, your action-packed expedition cruise, taking in the wonders and wildlife of Antarctica, nears its end. As we make the return trip Ushuaia, enjoy this time at sea. Join the Expedition Team in the Science Center to delve into areas of interest in more depth and contribute your findings to Citizen Science projects. Enlist the help of our onboard photographer with the editing of your photos. Relax with a treatment in the Wellness Spa or take in the fresh sea air from the on-deck pool or hot tubs. Spend time in the Explorer Lounge with the new friends you've made on your trip, sharing experiences over a drink.

DAY 18 Ushuaia and Buenos Aires

Enjoy an expedition finale in Buenos Aires Your expedition cruise ends in Ushuaia in Tierra del Fuego, Argentina's southernmost province. From here, you'll take a flight back to Buenos Aires, but it needn't be the end of your adventure. If you're not ready for the adventure to end just yet, why not join our optional Post-Programme to tour the magnificent Iguazu Falls. Summer is the best time to visit and it's a memorable way to wrap up your travels. Or you can stay and enjoy the sights of Buenos Aires before heading home.

Please Note:

Wild Earth Travel

Small Ships, Big Adventures

0800 945 3327 (within New Zealand) | +64 (0) 3 365 1355 | **1800 107 715** (within Australia)

info@wildearth-travel.com | wildearth-travel.com



Wild Earth Travel

Small Ships, Big Adventures



wildearth-travel.com

info@wildearth-travel.com

Hurtigruten offers unique expedition cruises to some of the most remote and pristine waters of the world. As with all expeditions; nature prevails. Weather, and ice and sea conditions, sets the final framework for all Hurtigruten's operations. Safety and unparalleled guest experiences are at all times our top priorities. All our indicative itineraries are continuously evaluated for adaptations, whether this is due to constraints the elements unexpectedly presents - or exciting possibilities nature and wildlife offer. That is why we call it an expedition.

Wild Earth Travel
Small Ships, Big Adventures

0800 945 3327 (within New Zealand) | +64 (0) 3 365 1355 | **1800 107 715** (within Australia)

info@wildearth-travel.com | **wildearth-travel.com**



Wild Earth Travel

Small Ships, Big Adventures

wildearth-travel.com

info@wildearth-travel.com

YOUR SHIP: ROALD AMUNDSEN

YOUR SHIP:	Roald Amundsen
VESSEL TYPE:	Expedition Ship
LENGTH:	140 metres
PASSENGER CAPACITY:	530
BUILT/REFURBISHED:	2019

MS Roald Amundsen is a modern expedition ship named after the legendary Norwegian polar explorer who first reached the South Pole. Built in 2019 at Kleven Yards in Norway, the vessel is purpose-designed for voyages in polar and remote waters, combining exploration capability with a strong focus on environmental performance. As one of the world's first hybrid-powered expedition cruise ships, she uses battery-assisted electric propulsion to reduce fuel consumption and CO₂ emissions by up to 20 percent, setting a new standard for more sustainable expedition travel. With a capacity of 490 guests, she serves as a comfortable and efficient base camp at sea for journeys to some of the planet's most extreme and spectacular regions.

Onboard, Scandinavian design principles define both public spaces and accommodation, using natural materials such as granite, oak, birch, and wool to create a calm, functional, and refined atmosphere. All cabins are outside-facing, with around half featuring private balconies, while selected suites offer private outdoor hot tubs. Key facilities include a two-level indoor/outdoor Observation Deck, a Science Centre at the core of the expedition experience, multiple dining venues inspired by

regional flavours, and comprehensive wellness amenities including a gym, sauna, spa, infinity pool, and hot tubs. Together, these features position MS Roald Amundsen as a technologically advanced and thoughtfully designed vessel, built to support immersive exploration without compromising comfort or environmental responsibility.



responsibility.

Wild Earth Travel
Small Ships, Big Adventures

0800 945 3327 (within New Zealand) | +64 (0) 3 365 1355 | **1800 107 715** (within Australia)

info@wildearth-travel.com | **wildearth-travel.com**

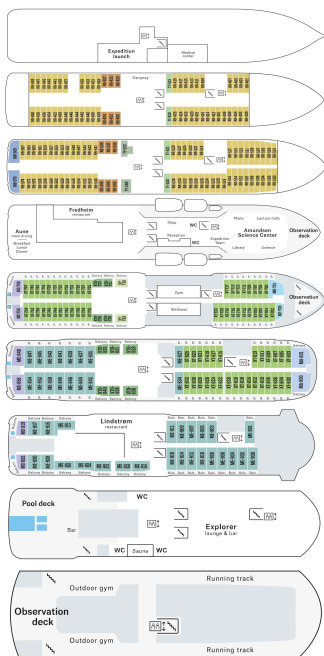
Wild Earth Travel

Small Ships, Big Adventures

wildearth-travel.com

info@wildearth-travel.com

INSIDE YOUR SHIP



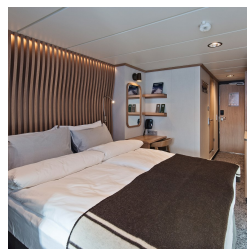
Arctic Superior. From



Expedition Suite. From



Polar Outside. From





Wild Earth Travel

Small Ships, Big Adventures



wildearth-travel.com

info@wildearth-travel.com

PRICING

18-Feb-2026 to 07-Mar-2026

Polar Outside. From	22505 AUD pp
Arctic Superior. From	24708 AUD pp
Expedition Suite. From	32719 AUD pp

Optional extras & upgrades

Optional tours and excursions available. Please contact us for more details.

Wild Earth Travel
Small Ships, Big Adventures

0800 945 3327 (within New Zealand) | +64 (0) 3 365 1355 | **1800 107 715** (within Australia)

info@wildearth-travel.com | **wildearth-travel.com**