

Wild Earth Travel

Small Ships, Big Adventures

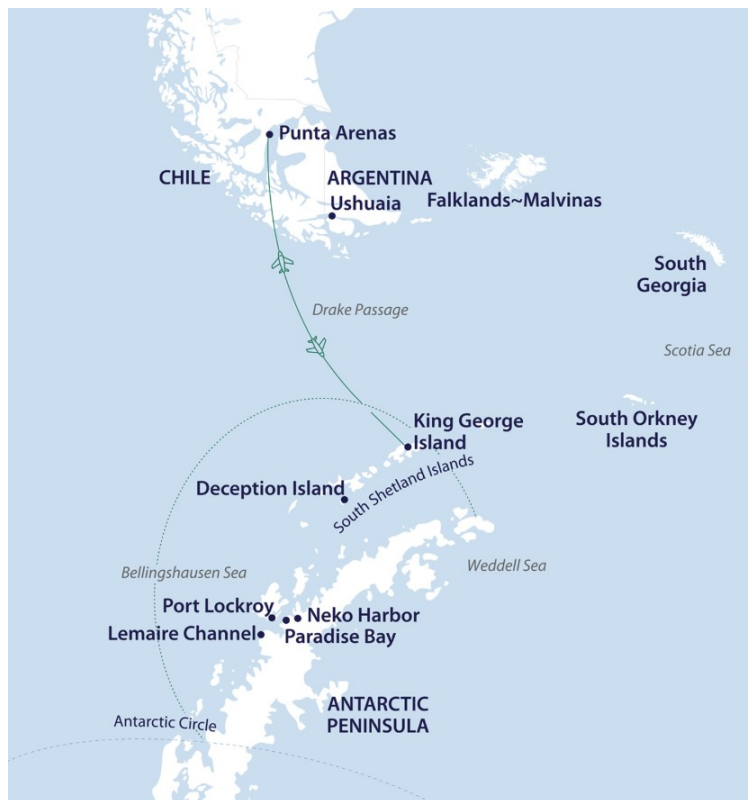
wildearth-travel.com

info@wildearth-travel.com

ACROSS THE ANTARCTIC CIRCLE: FLY THE DRAKE EXPEDITION

Thank you for joining Aurora Expeditions on our Across the Antarctic Circle Fly/Fly expedition.

Venturing below the Antarctic Circle is about more than just earning bragging rights. It is the chance to enter a different world more rarely seen, it feels more isolated and colder than further north, with great swathes of pack-ice and dreamlike icebergs. Thread through pack ice and narrow channels where scenes of ice-clad mountains, feeding whales and lively penguin colonies become lasting memories.



ITINERARY

Day 1 Arrive Punta Arenas

Arrive in Punta Arenas, where you will be met by a representative of Aurora Expeditions and transferred to our hotel. We ask that you arrive no later than 2:00pm on this day. In addition to ensuring your arrival in time for our important pre-flight briefings, if weather conditions deem it necessary, we may depart for King George Island on Day 1 as opposed to Day 2.

Wild Earth Travel

Small Ships, Big Adventures

0800 945 3327 (within New Zealand) | +64 (0) 3 365 1355 | 1800 107 715 (within Australia)

info@wildearth-travel.com | wildearth-travel.com



Wild Earth Travel

Small Ships, Big Adventures

wildearth-travel.com

info@wildearth-travel.com

Please visit the Aurora Expeditions hospitality desk in the lobby between 2.00 pm - 6.00 pm to collect your luggage cabin tags. Our team will confirm details regarding your embarkation day, answer any questions and provide you with information about where to dine or purchase last minute items.

Overlooking the Straits of Magellan, the city sits astride one of the world's most historic trade routes. Today, Punta Arenas reflects a great blend of cultural backgrounds, from English sheep ranchers to Portuguese sailors. It remains an utterly fascinating testament to Chile's rich history. Modern day Punta Arenas is home to many popular restaurants, and bars, offering a mix of local and international fare (meals at your own expense today).

At 7.00 pm this evening, meet your fellow expeditioners at a voyage briefing where we will reconfirm your transfer times for tomorrow, explain the procedures for your flight to King George Island and outline important IAATO regulations for visitors to Antarctica.

Assigned accommodation: Cabo de Hornos

Day 2 Flight Punta Arenas to King George Island, Embarkation

This morning we will be transferred to Punta Arenas airport for our charter flight to King George Island, Antarctica (weather permitting). The flight will take approximately one hour and forty-five minutes. On arrival into King George Island our expedition team is on hand to greet you and to prepare you for your Zodiac transfer to the vessel. You will have time to settle into your cabin before our important safety briefings.

Note: King George Island is located at the northern part of the Antarctic Peninsula in the South Shetland Islands and is one of the most remote places on Earth. A clear sky with perfect visibility is required for safe take-off and landing. A contingency plan will be applied to your itinerary should your flights not proceed today. Your safety is our utmost priority. We apologise in advance for any delays caused due to this unpredictable situation. Please refer to our terms and conditions for a more detailed explanation.

Days 3-9 Antarctic Peninsula & Antarctic Circle

It's almost impossible to describe the feeling of arriving in Antarctica. Spotting your first iceberg and taking a deep breath of some of the most fresh, crisp air on earth is an experience that will stay with you forever.

Once we arrive, the western side of the Antarctic Peninsula and the South Shetland Islands are ours to explore, and we have a host of choices available to us. Because we are so far south, we will experience approximately 18-24 hours of daylight and the days can be as busy as you wish.

Your experienced expedition team, who have made countless journeys to this area, will use their expertise to design your voyage from day to day, choosing the best options based on the prevailing weather, ice conditions and wildlife opportunities.

We generally make landings or Zodiac excursions twice a day. You will want to rug up before joining Zodiac cruises along spectacular ice cliffs or among grounded icebergs, keeping watch for whales, seals and porpoising penguins. Zodiacs will also transport you from the ship to land, where you can visit penguin rookeries, discover historic huts and explore some of our favourite spots along the peninsula.

While ashore we aim to stretch our legs, wandering along pebbly beaches or perhaps up snow-covered ridgelines to vantage points with mountains towering overhead and ice-speckled oceans below. If you have chosen an optional activity, you will have the option to do that whenever conditions allow, and of course keen polar plungers will have the chance to fully immerse themselves in polar waters - conditions permitting!

In addition to Zodiac cruises and shore excursions, we may ship cruise some of the narrow, dramatic straits separating offshore islands from the mainland, or linger in scenic bays to watch whales travelling or feeding. This is a great time to enjoy the observation lounge or make your way to the bridge for uninterrupted views of Antarctica in all its splendour. Keep an ear out for the creak and deep rumble of glaciers as they carve their way from summit to sea. Take a quiet moment to experience the wonder of this incredible white continent.

On this voyage, conditions permitting, we plan to cross the Antarctic Circle, an imaginary line located at the Antarctic Circle at latitude 66°33' South (approximately). Crossing below The Circle is certainly a special highlight for many people, and the moment will be celebrated with a toast out on the deck (weather permitting). You have earned some boasting privileges, joining a small group of lucky adventurers who have ventured to this part of the world.

As we approach and cross the Antarctic Circle, you will notice subtle changes in the landscape, and also in the distribution of wildlife. The waters at this time of year are rich with krill and we hope to see plenty of whales - particularly

Wild Earth Travel

Small Ships, Big Adventures

0800 945 3327 (within New Zealand) | +64 (0) 3 365 1355 | 1800 107 715 (within Australia)

info@wildearth-travel.com | wildearth-travel.com



Wild Earth Travel

Small Ships, Big Adventures



wildearth-travel.com

info@wildearth-travel.com

humpbacks and minke and enjoy the spectacle of penguins feeding their ravenous chicks.

Days 10 Fly King George Island to Punta Arenas.

As we approach Frei Base on King George Island, it is time to farewell Antarctica and our amazing adventure before boarding our flight (approximately one hour and forty-five minutes) to Punta Arenas, Chile. There is time for reflection and discussion about what we have seen and experienced. We hope you become ambassadors for Antarctica telling your family, friends and colleagues about your journey to this magical place, advocating for its conservation and preservation so that they might one day visit the region to experience what you have been lucky to see and do here.

From Punta Arenas airport, you will be transferred to our group hotel for an overnight stay.

Note: King George Island is located at the northern tip of the Antarctic Peninsula in the South Shetland Islands and is one of the most remote places on Earth. A clear sky with perfect visibility is required for safe take-off and landing. We apologise in advance for any possible delays.

Accommodation: Hotel Cabo de Hornos

Day 11 Depart Punta Arenas

After breakfast, bid a fond farewell to your fellow travellers as we continue our onward journeys, hopefully with a newfound sense of the immense power of nature (breakfast included). A transfer to the airport is included in the voyage fare.

Note: Should your flight not proceed due to local conditions; you will remain on the ship until it is deemed achievable to return to Punta Arenas. Refer to our terms and conditions for further details.

Please note:

Itineraries are subject to change.



Wild Earth Travel

Small Ships, Big Adventures

0800 945 3327 (within New Zealand) | +64 (0) 3 365 1355 | 1800 107 715 (within Australia)

info@wildearth-travel.com | wildearth-travel.com

Wild Earth Travel

Small Ships, Big Adventures

wildearth-travel.com

info@wildearth-travel.com

YOUR SHIP: DOUGLAS MAWSON

YOUR SHIP:	Douglas Mawson
VESSEL TYPE:	Small Ship Expedition
LENGTH:	
PASSENGER CAPACITY:	154
BUILT/REFURBISHED:	2025

Length: 104.4 m

Setting sail in 2025, the Douglas Mawson is the latest addition to Aurora Expeditions' fleet of purpose-built small ships, designed for global discovery and adventure in comfort. Named after the pioneering Australian geologist and explorer, this state-of-the-art vessel combines cutting-edge technology with elegant design, featuring the revolutionary Ulstein X-BOW® for smoother sailing and enhanced sustainability. With space for up to 154 guests (130 on expedition voyages), it offers an intimate and environmentally conscious cruising experience. Multiple observation areas, a heated pool, Jacuzzis, and a sauna ensure guests enjoy both exploration and relaxation in equal measure.

On board, passengers can delve deeper into their destinations through engaging lectures in the theatre, hands-on learning in the Citizen Science Centre, and peaceful moments in the library or observation lounge. Dining is relaxed and sociable, with open seating, hearty cuisine, and complimentary beverages with dinner. Accommodation options range from luxurious suites with private balconies to well-appointed solo staterooms, catering to every traveller's style and comfort. Whether navigating the polar regions or exploring the British Isles and Mediterranean, the

Douglas Mawson delivers the perfect balance of adventure, discovery, and refined small-ship luxury.

Wild Earth Travel attends the launch of this new expedition ship



dition ship

Wild Earth Travel

Small Ships, Big Adventures

0800 945 3327 (within New Zealand) | +64 (0) 3 365 1355 | 1800 107 715 (within Australia)

info@wildearth-travel.com | wildearth-travel.com

Wild Earth Travel

Small Ships, Big Adventures



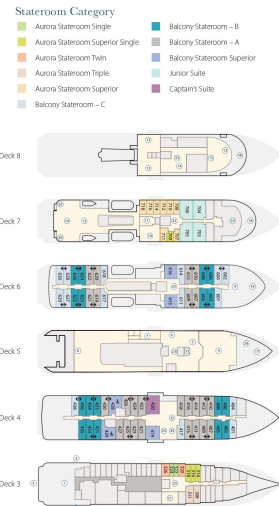
wildeath-travel.com

info@wildeath-travel.com

INSIDE YOUR SHIP

- Ship Features**
- ① Charge room/mudroom
 - ② Zodiac access points
 - ③ Activity launching platform
 - ④ Lecture room & lounge
 - ⑤ Assembly station
 - ⑥ Reception
 - ⑦ Ship shop
 - ⑧ Dining room
 - ⑨ Library
 - ⑩ Gym
 - ⑪ Sauna
 - ⑫ Seating area
 - ⑬ Observation lounge
 - ⑭ Top-deck restaurant
 - ⑮ Bar
 - ⑯ Upper glass atrium lounge
 - ⑰ Lower glass atrium lounge
 - ⑱ Observation decks
 - ⑲ Swimming pool* and sun deck
 - ⑳ Jacuzzis
 - ㉑ Medical clinic
 - ㉒ Bridge
 - ㉓ Elevator
 - ㉔ Main entrance
 - ㉕ Expedition desk
 - ㉖ Citizen Science centre
 - ㉗ Disability accessible staterooms
- *Connecting staterooms and suites
 *Swimming pool not operational when sailing in open water. Hours of operation subject to weather conditions.
 Deck plans subject to change.

Douglas Mawson Deck Plan



Aurora Stateroom Single



Aurora Stateroom Superior



Aurora Stateroom Superior Single



Aurora Stateroom Twin



Balcony Stateroom Category A



Balcony Stateroom Category B



Balcony Stateroom Category C



Balcony Stateroom Superior





Wild Earth Travel

Small Ships, Big Adventures



wildearth-travel.com

info@wildearth-travel.com

PRICING

07-Aug-2028 to 17-Aug-2028

Aurora Stateroom Twin	46856 AUD pp
Aurora Stateroom Superior	49649 AUD pp
Balcony Stateroom Category C	50890 AUD pp
Balcony Stateroom Category B	53528 AUD pp
Aurora Stateroom Single	54925 AUD pp
Balcony Stateroom Category A	57563 AUD pp
Aurora Stateroom Superior Single	60356 AUD pp
Balcony Stateroom Superior	62994 AUD pp
Junior Suite	74943 AUD pp
Captain's Suite	85650 AUD pp



Wild Earth Travel
Small Ships, Big Adventures

0800 945 3327 (within New Zealand) | +64 (0) 3 365 1355 | 1800 107 715 (within Australia)

info@wildearth-travel.com | wildearth-travel.com