

Wild Earth Travel

Small Ships, Big Adventures

wildearth-travel.com

info@wildearth-travel.com

12 DAYS LUXURY ANTARCTICA CRUISE - PUERTO WILLIAMS TO KING GEORGE ISLAND

This exquisite 9-day voyage into Antarctica is an explorer's dream come true. From Puerto Williams we'll traverse Drake's Passage and delve into the awe-inspiring sights of the White Kingdom. From the thrill of witnessing a giant glacier soaring out of ice-strewn, glassy waters, to wildlife watching with our polar experts, who know the terrain intimately and will take you to the optimum places to view penguin rookeries or whales, every moment is an adventure.

Some departures may have slightly modified itineraries. Please confirm the itinerary with an Expedition Specialist.



ITINERARY

Days 0 - 1 - Pre Cruise & Puerto Williams

- _ ****Pre Cruise Benefits**** _
- _ ****Charter flights**** _
- _ ****Hotel**** _

Puerto Williams is a Chilean city located on Navarino Island on the southern shores of the Beagle Channel. It claims to be the "southernmost city in the world", however owing to its small size - 2500 residents approximately - the much larger Argentinean city of Ushuaia, which sits on the northern side of the same channel, also claims that title. The surrounding scenery is magnificent. The wild windswept mountains rise above the tree line and are regularly dusted with snow. The city itself has the dramatic backdrop called "Dientes de

Wild Earth Travel

Small Ships, Big Adventures

0800 945 3327 (within New Zealand) | +64 (0) 3 365 1355 | 1800 107 715 (within Australia)

info@wildearth-travel.com | wildearth-travel.com

Wild Earth Travel

Small Ships, Big Adventures

wildearth-travel.com

info@wildearth-travel.com

Navarino" (literally "teeth of Navarino"), which rival the famous Torres del Paine further to the north. The area was originally used by the Yaghan people, hunter-gatherers who despite enduring the harsh regional climate, could not weather the arrival of Europeans. The current city was established as a naval base in 1953 and honours the British-Chilean naval commander John Williams Wilson of the 16th century. Initially it served to protect territorial possessions and fishing rights of the area, as well as offering logistical support to Antarctic bases. More recently it has become a departure point for scientific and tourism trips to the Antarctic region. In contrast to the bustle and traffic of a very commercial Ushuaia, Puerto Williams offers a quieter, more relaxed experience. It charms the visitor with a small village feel, complete with rustic buildings and the homely smell of drifting wood smoke. A haven of peace at the end of the world.

Days 2 - 3 - Drake Passage

Sailing the legendary Drake Passage is an experience that few are ever lucky enough to experience. The southern tip of the Americas already feels like a wild enough environment - but the sensation of watching the distant cliffs of the peninsular known as the 'End of the World' fade into the horizon, is one that's equal parts epic, eerie and magical. Set sail, to slowly drop off the bottom of the map from Cape Horn, and voyage on an expedition down into the icy underworld of Antarctica. Drake Passage is an extraordinary voyage of romantic ocean faring legend, as you aim for Antarctica's icy realm. On arrival, skyscraper sized icebergs salute you, as you traverse the waters of this continent where snow and ice dwelling creatures like penguins and whales roam undisturbed. Your first sight of this most-unexplored place will most likely be the South Shetland Islands. Walk in the footsteps of some of history's greatest and bravest explorers as you explore famed, snow-covered landmasses like Elephant and Deception Island. If the journey across Drake Passage sounds daunting, don't worry - even in rough seas you're never alone, and will often be accompanied on this spine-tingling adventure by soaring albatrosses and maybe even a protective pod of humpbacks and hourglass dolphins or two. Converging warm and cool ocean currents attract some spectacular animal life to the passage. If this is your first visit to this magical continent, you'll also want to familiarise yourself with our blog for first timers to Antarctica.

Day 4 - Antarctic Sound

Few voyages ignite the imagination like a journey down to one of the planet's most remote, extreme and enchanting wilderness, Antarctica. An adventure in

its purest form, only a handful of people will ever be lucky enough to experience the majestic beauty of these monochrome landscapes first-hand. The Antarctic Sound will be one of your first encounters of this whitewash kingdom, located at the northerly tip of the Antarctic Peninsula - which sprawls up like a tentacle towards Tierra del Fuego, South America's most southerly point, otherwise known as the 'End of the World'. Taking its name from the first ship to brave the passageway between the peninsular and the Joinville Island groups back in 1902, the Sound is a raw, sensory assault of imposing iceberg slabs, broken away from the disintegrating Larsen Ice Shelf. Come face-to-face with stadium-sized islands of ice and meet the extraordinary birdlife that call this whitewash kingdom home. Watch on, as colonies of Gentoo penguins hop around, and cape petrels sweep overhead, as the continent's unique wildlife thrives around you. If you're planning your first venture into Antarctica, you'll want to brush up on your photography skills in advance, to capture this unforgiving continent in all of its unrestrained glory. Read our blog for tips on how to ensure that your photos do justice to the adventure of a lifetime.

Days 5 - 8 - Antarctic Peninsula

The Antarctic Peninsula unravels upwards towards South America, reaching out a beckoning finger to the adventurous, who dare to explore this untamed realm. Stretching up from the heart of the world's southernmost continent, the Antarctic Peninsula lies a mere 620 mile from Tierra del Fuego and, for many, offers a spectacular first taste of the snow-blanketed landscapes and colossal ice sculptures, which make up Earth's least-explored continent. Unseen by humans until 1820 - a blink of an eye ago in relative terms - this is an adventure sure to make your hairs stand on end, as you experience the thrill of the truly unknown and extraordinary. The vast peninsula is sprinkled with research bases, which are at the frontline of human scientific endeavour, pushing to study and understand this unique landscape, its exceptional wildlife, and the impact that humans are having on this pristine continent. Witness cathedral-sized icebergs up close, and blue-hued glaciers, slowly slipping from imposing locations like Hope Bay. Blanched mountain peaks cover the peninsula, and you'll find thousands of adorable Adelle penguin pairs thriving undisturbed in this peninsula's unique setting.

Day 9 - South Shetland Islands

The ice-coated Antarctic Peninsula forms perhaps the most accessible region of mainland Antarctica, lying a mere 480-miles away from South America, across the fabled waters of Drakes Passage. Lying close to the northwestern tip of the Antarctic Peninsula, separated by the Bransfield Strait, the South

Wild Earth Travel

Small Ships, Big Adventures

0800 945 3327 (within New Zealand) | +64 (0) 3 365 1355 | 1800 107 715 (within Australia)

info@wildearth-travel.com | wildearth-travel.com

Wild Earth Travel

Small Ships, Big Adventures

wildearth-travel.com

info@wildearth-travel.com

Shetland Islands fall under the jurisdiction of the Antarctic Treaty, suspending claims on their sovereignty. Several countries maintain research bases here, and with plump elephant seals, and crowds of Gentoo, Chinstrap and Adelie Penguins also calling the islands home, it can even feel a little crowded at times. King George Island is the largest and most hospitable island, hosting the majority of the research stations - some of which are populated all-year-round by tiny, hardy crews. Don't be fooled though, these islands offer extraordinary adventure in one of the most remote locations on earth. The triple peaks of Mount Foster tower above the archipelago, and you'll feel your heart pumping a little quicker, as you sail into the core of Deception Island's magnificent collapsed volcano caldera. Hike the luna landscapes within, and even dip into the improbably warm, geothermally-heated waters of Pendulum Cove. Elephant Island, meanwhile, is written deep into the annals of Antarctic expedition legend, as the site where Ernest Shackleton and the stricken crew of the Endurance miraculously survived a harsh Antarctic winter, in 1916. Discover even more reasons to visit this incredible icy kingdom and find out why many consider the South Shetland Islands to be the jewel in Antarctica's Crown, by reading our blog.

** _Post Cruise Benefits_ **
** _Charter flights_ **
** _Hotel_ **
** _Charter flights_ **

Please note:

Itineraries are subject to change.

Day 10 - King George Island

As the largest of all the South Shetland Island, King George is considered the gateway to Antarctica. At just 120 kilometres from the Antarctic Peninsula and the only airport in the South Shetlands, it is the connection between "real life" and "Antarctic life". More than 10 different nations have year-round or summer-only scientific research stations on the island (considering that 90% of the island is covered by snow and ice, that is quite an achievement!). Maintaining a base on the island allows membership of the Antarctic Treaty. There is even a Russian Orthodox church, with a permanent on-site priest. The island might be home to a few international scientists, but they are very much outnumbered by the diverse wildlife that considers King George Island rightfully theirs. Adelie, Chinstrap and Gentoo Penguins all commute to and from the Antarctic peninsula from the island, while Weddell and leopard seals are regular visitors and can be spotted either in the water or on the shore. Naturally, this brings a huge amount of birdlife: skuas and southern giant petrels are regular summer residents, attracted by the warm climate (warm being a relative term, average temperature is between 1.5 and -6.5 °C). The island was named after King George III after British explorer discovered it in 1819. Since then the island has been claimed by both Chile (1940) and Argentina (1943), but remains part of British Antarctic Territory.

Day 11 - Post Cruise

Wild Earth Travel

Small Ships, Big Adventures

0800 945 3327 (within New Zealand) | +64 (0) 3 365 1355 | 1800 107 715 (within Australia)

info@wildearth-travel.com | wildearth-travel.com

Wild Earth Travel

Small Ships, Big Adventures



wildearth-travel.com

info@wildearth-travel.com

YOUR SHIP: SILVER CLOUD

YOUR SHIP:	Silver Cloud
VESSEL TYPE:	Luxury Expedition
LENGTH:	157 m
PASSENGER CAPACITY:	200/260
BUILT/REFURBISHED:	1994 Refurbished & Rebranded



Silver Cloud delivers one of the most personalised expedition experiences at sea, blending ultra-luxury with true adventure. As Silversea's first crossover ship, she's built for both comfort and exploration, offering large ocean-facing suites--80% with verandas--and an impressive 1:1 crew-to-guest ratio. With 20 Zodiacs and 10 kayaks, guests enjoy unparalleled access to remote locations, while expert-led excursions ensure meaningful encounters with nature and culture alike. From the icy reaches of Antarctica to the sun-kissed South Pacific, Silver Cloud brings the remarkable within easy reach.

On board, refined living continues with four elegant dining venues, including French fine dining at La Dame and authentic Italian at La Terrazza. Relax in stylish public areas such as the Panorama Lounge or Connoisseur's Corner, indulge in world-class spa treatments, or learn more about your destinations from passionate experts in the Explorer Lounge. Whether you're cruising the Kimberley or the Chilean fjords, Silver Cloud offers a sophisticated base for discovering the far corners of the world in sublime comfort.

Wild Earth Travel

Small Ships, Big Adventures

0800 945 3327 (within New Zealand) | +64 (0) 3 365 1355 | 1800 107 715 (within Australia)

info@wildearth-travel.com | wildearth-travel.com

Wild Earth Travel

Small Ships, Big Adventures

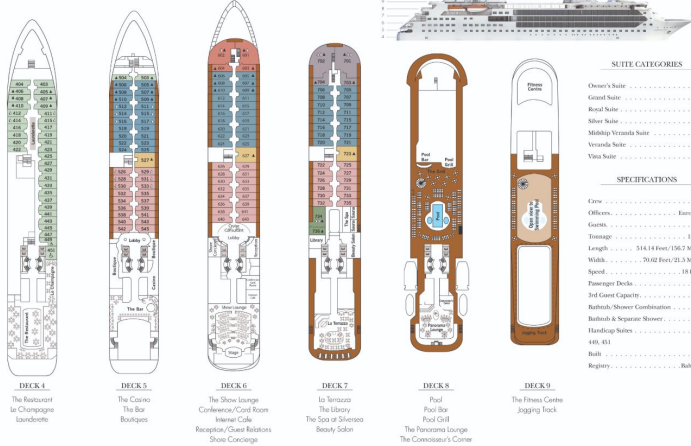


wildeath-travel.com

info@wildeath-travel.com

INSIDE YOUR SHIP

Silver Cloud – DECK PLAN



SUITE CATEGORIES	
Owner's Suite	●
Grand Suite	●
Royal Suite	●
Silver Suite	●
Midship Veranda Suite	●
Veranda Suite	●
Vista Suite	●

SPECIFICATIONS	
Crew	1022
Officers	120
Guests	296
Tonnage	19,000
Length	244.88 Metres (802.7 Feet)
Width	20.02 Metres (65.7 Feet)
Speed	18 Knots
Passenger Decks	6
Inf/Games/Casino	4
Bathrooms & Shower Combinations	4
Handicap Suites	48
110-121	110-121
Bath	1954
Registry	Barbados

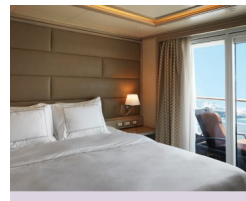
Classic Veranda



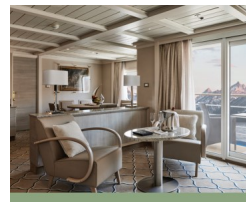
Grand 1 Bedroom



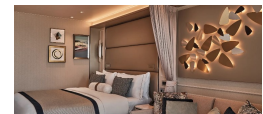
Medallion



Owner 1 Bedroom



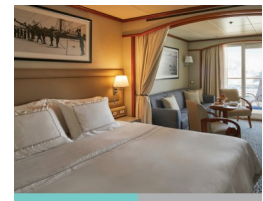
Deluxe Veranda



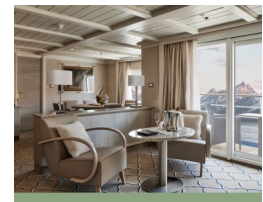
Grand 2 Bedroom



Midship Veranda



Owner 2 Bedroom



Wild Earth Travel

Small Ships, Big Adventures

wildearth-travel.com

info@wildearth-travel.com

PRICING

19-Oct-2026 to 30-Oct-2026

Vista	23800 AUD pp
Medallion	39700 AUD pp
Silver	42100 AUD pp
Royal 1 Bedroom	45600 AUD pp
Grand 1 Bedroom	49600 AUD pp
Owner 1 Bedroom	54000 AUD pp
Royal 2 Bedroom	69700 AUD pp
Grand 2 Bedroom	73700 AUD pp
Owner 2 Bedroom	75400 AUD pp
Veranda	0 pp
Midship Veranda	0 pp

Vista	31000 AUD pp
Medallion	46800 AUD pp
Silver	48500 AUD pp
Royal 1 Bedroom	52100 AUD pp
Grand 1 Bedroom	56000 AUD pp
Owner 1 Bedroom	61900 AUD pp
Royal 2 Bedroom	82700 AUD pp
Grand 2 Bedroom	86600 AUD pp
Owner 2 Bedroom	89800 AUD pp
Midship Veranda	0 pp
Veranda	0 pp

28-Oct-2026 to 08-Nov-2026

Vista	27100 AUD pp
Medallion	39600 AUD pp
Silver	40700 AUD pp
Royal 1 Bedroom	44000 AUD pp
Grand 1 Bedroom	47500 AUD pp
Owner 1 Bedroom	51300 AUD pp
Royal 2 Bedroom	71000 AUD pp
Grand 2 Bedroom	74500 AUD pp
Owner 2 Bedroom	75700 AUD pp
Midship Veranda	0 pp
Veranda	0 pp

24-Nov-2026 to 05-Dec-2026

Wild Earth Travel
Small Ships, Big Adventures

0800 945 3327 (within New Zealand) | +64 (0) 3 365 1355 | 1800 107 715 (within Australia)

info@wildearth-travel.com | wildearth-travel.com

Wild Earth Travel

Small Ships, Big Adventures

wildearth-travel.com

info@wildearth-travel.com

PRICING

20-Dec-2026 to 31-Dec-2026

Vista	32800 AUD pp
Veranda	37200 AUD pp
Midship Veranda	38200 AUD pp
Medallion	71600 AUD pp
Silver	76200 AUD pp
Royal 1 Bedroom	82200 AUD pp
Grand 1 Bedroom	89000 AUD pp
Owner 1 Bedroom	96300 AUD pp
Royal 2 Bedroom	115700 AUD pp
Grand 2 Bedroom	122500 AUD pp
Owner 2 Bedroom	125800 AUD pp

Vista	35900 AUD pp
Medallion	50500 AUD pp
Silver	50900 AUD pp
Royal 1 Bedroom	59400 AUD pp
Grand 1 Bedroom	64600 AUD pp
Owner 1 Bedroom	70300 AUD pp
Royal 2 Bedroom	94300 AUD pp
Grand 2 Bedroom	99500 AUD pp
Owner 2 Bedroom	102600 AUD pp
Veranda	0 pp
Midship Veranda	0 pp

29-Dec-2026 to 09-Jan-2027

Vista	35300 AUD pp
Veranda	40300 AUD pp
Midship Veranda	41300 AUD pp
Medallion	82500 AUD pp
Silver	87600 AUD pp
Royal 1 Bedroom	94600 AUD pp
Grand 1 Bedroom	102200 AUD pp
Owner 1 Bedroom	110600 AUD pp
Royal 2 Bedroom	130900 AUD pp
Grand 2 Bedroom	138500 AUD pp
Owner 2 Bedroom	142400 AUD pp

05-Jan-2027 to 16-Jan-2027

Wild Earth Travel
Small Ships, Big Adventures

0800 945 3327 (within New Zealand) | +64 (0) 3 365 1355 | 1800 107 715 (within Australia)

info@wildearth-travel.com | wildearth-travel.com

Wild Earth Travel

Small Ships, Big Adventures

wildearth-travel.com

info@wildearth-travel.com

PRICING

14-Jan-2027 to 25-Jan-2027

Vista	37400 AUD pp
Medallion	55100 AUD pp
Silver	55600 AUD pp
Royal 1 Bedroom	64100 AUD pp
Grand 1 Bedroom	69300 AUD pp
Owner 1 Bedroom	75000 AUD pp
Royal 2 Bedroom	100400 AUD pp
Grand 2 Bedroom	105600 AUD pp
Owner 2 Bedroom	108700 AUD pp
Midship Veranda	0 pp
Veranda	0 pp

Vista	29600 AUD pp
Medallion	47400 AUD pp
Silver	47800 AUD pp
Royal 1 Bedroom	56300 AUD pp
Grand 1 Bedroom	61500 AUD pp
Owner 1 Bedroom	67200 AUD pp
Royal 2 Bedroom	85600 AUD pp
Grand 2 Bedroom	90800 AUD pp
Owner 2 Bedroom	93800 AUD pp
Veranda	0 pp
Midship Veranda	0 pp

23-Jan-2027 to 03-Feb-2027

Vista	33700 AUD pp
Medallion	51500 AUD pp
Silver	51900 AUD pp
Royal 1 Bedroom	60400 AUD pp
Grand 1 Bedroom	65600 AUD pp
Owner 1 Bedroom	71300 AUD pp
Royal 2 Bedroom	93300 AUD pp
Grand 2 Bedroom	98500 AUD pp
Owner 2 Bedroom	101600 AUD pp
Veranda	0 pp
Midship Veranda	0 pp

01-Feb-2027 to 12-Feb-2027

Wild Earth Travel
Small Ships, Big Adventures

0800 945 3327 (within New Zealand) | +64 (0) 3 365 1355 | 1800 107 715 (within Australia)

info@wildearth-travel.com | wildearth-travel.com

Wild Earth Travel

Small Ships, Big Adventures

wildearth-travel.com

info@wildearth-travel.com

PRICING

10-Feb-2027 to 21-Feb-2027

Vista	32500 AUD pp
Medallion	52300 AUD pp
Silver	52600 AUD pp
Royal 1 Bedroom	61300 AUD pp
Grand 1 Bedroom	66400 AUD pp
Owner 1 Bedroom	72200 AUD pp
Royal 2 Bedroom	93200 AUD pp
Grand 2 Bedroom	98300 AUD pp
Owner 2 Bedroom	101500 AUD pp
Veranda	0 pp
Midship Veranda	0 pp

19-Feb-2027 to 02-Mar-2027

Vista	27200 AUD pp
Medallion	46900 AUD pp
Silver	47400 AUD pp
Royal 1 Bedroom	55900 AUD pp
Grand 1 Bedroom	61000 AUD pp
Owner 1 Bedroom	66800 AUD pp
Royal 2 Bedroom	83000 AUD pp
Grand 2 Bedroom	88100 AUD pp
Owner 2 Bedroom	91300 AUD pp
Veranda	0 pp
Midship Veranda	0 pp

28-Feb-2027 to 11-Mar-2027

Vista	26200 AUD pp
Medallion	47400 AUD pp
Silver	47600 AUD pp
Royal 1 Bedroom	56300 AUD pp
Grand 1 Bedroom	61500 AUD pp
Owner 1 Bedroom	67100 AUD pp
Royal 2 Bedroom	82500 AUD pp
Grand 2 Bedroom	87700 AUD pp
Owner 2 Bedroom	90700 AUD pp
Midship Veranda	0 pp
Veranda	0 pp

Wild Earth Travel

Small Ships, Big Adventures

0800 945 3327 (within New Zealand) | +64 (0) 3 365 1355 | 1800 107 715 (within Australia)

info@wildearth-travel.com | wildearth-travel.com

Wild Earth Travel

Small Ships, Big Adventures

wildearth-travel.com

info@wildearth-travel.com

PRICING

09-Mar-2027 to 20-Mar-2027

Vista	26200 AUD pp
Medallion	47400 AUD pp
Silver	47600 AUD pp
Royal 1 Bedroom	56300 AUD pp
Grand 1 Bedroom	61500 AUD pp
Owner 1 Bedroom	67100 AUD pp
Royal 2 Bedroom	82500 AUD pp
Grand 2 Bedroom	87700 AUD pp
Owner 2 Bedroom	90700 AUD pp
Midship Veranda	0 pp
Veranda	0 pp

Vista	24100 AUD pp
Medallion	41600 AUD pp
Silver	42800 AUD pp
Royal 1 Bedroom	46200 AUD pp
Grand 1 Bedroom	50600 AUD pp
Owner 1 Bedroom	55100 AUD pp
Royal 2 Bedroom	70600 AUD pp
Grand 2 Bedroom	75000 AUD pp
Owner 2 Bedroom	76800 AUD pp
Veranda	0 pp
Midship Veranda	0 pp

28-Oct-2027 to 07-Nov-2027

Classic Veranda	27100 AUD pp
Superior Veranda	28200 AUD pp
Deluxe Veranda	29400 AUD pp
Premium Veranda	30000 AUD pp
Silver	43200 AUD pp
Grand 1 Bedroom	85300 AUD pp
Owner 1 Bedroom	92600 AUD pp

03-Nov-2027 to 14-Nov-2027

Wild Earth Travel
Small Ships, Big Adventures

0800 945 3327 (within New Zealand) | +64 (0) 3 365 1355 | 1800 107 715 (within Australia)

info@wildearth-travel.com | wildearth-travel.com

Wild Earth Travel

Small Ships, Big Adventures

wildearth-travel.com

info@wildearth-travel.com

PRICING

12-Nov-2027 to 22-Nov-2027

Vista	25600 AUD pp
Medallion	41800 AUD pp
Silver	43100 AUD pp
Royal 1 Bedroom	46600 AUD pp
Grand 1 Bedroom	51300 AUD pp
Owner 1 Bedroom	56000 AUD pp
Royal 2 Bedroom	72300 AUD pp
Grand 2 Bedroom	77000 AUD pp
Owner 2 Bedroom	79000 AUD pp
Veranda	0 pp
Midship Veranda	0 pp

21-Nov-2027 to 02-Dec-2027

Vista	29900 AUD pp
Medallion	47300 AUD pp
Silver	48400 AUD pp
Royal 1 Bedroom	52100 AUD pp
Grand 1 Bedroom	56700 AUD pp
Owner 1 Bedroom	61700 AUD pp
Royal 2 Bedroom	81700 AUD pp
Grand 2 Bedroom	86300 AUD pp
Owner 2 Bedroom	88600 AUD pp
Midship Veranda	0 pp
Veranda	0 pp

30-Nov-2027 to 10-Dec-2027

Vista	26900 AUD pp
Medallion	45300 AUD pp
Silver	46500 AUD pp
Royal 1 Bedroom	50400 AUD pp
Grand 1 Bedroom	55400 AUD pp
Owner 1 Bedroom	60700 AUD pp
Royal 2 Bedroom	77300 AUD pp
Grand 2 Bedroom	82300 AUD pp
Owner 2 Bedroom	84900 AUD pp
Veranda	0 pp
Midship Veranda	0 pp

Wild Earth Travel

Small Ships, Big Adventures

0800 945 3327 (within New Zealand) | +64 (0) 3 365 1355 | 1800 107 715 (within Australia)

info@wildearth-travel.com | wildearth-travel.com

Wild Earth Travel

Small Ships, Big Adventures

wildearth-travel.com

info@wildearth-travel.com

PRICING

09-Dec-2027 to 20-Dec-2027

Vista	28400 AUD pp
Medallion	47200 AUD pp
Silver	48500 AUD pp
Royal 1 Bedroom	52500 AUD pp
Grand 1 Bedroom	57800 AUD pp
Owner 1 Bedroom	63100 AUD pp
Royal 2 Bedroom	80700 AUD pp
Grand 2 Bedroom	86000 AUD pp
Owner 2 Bedroom	88700 AUD pp
Veranda	0 pp
Midship Veranda	0 pp

18-Dec-2027 to 28-Dec-2027

Vista	27800 AUD pp
Medallion	47100 AUD pp
Silver	48500 AUD pp
Royal 1 Bedroom	52500 AUD pp
Grand 1 Bedroom	58100 AUD pp
Owner 1 Bedroom	63500 AUD pp
Royal 2 Bedroom	80100 AUD pp
Grand 2 Bedroom	85700 AUD pp
Owner 2 Bedroom	88500 AUD pp
Midship Veranda	0 pp
Veranda	0 pp

27-Dec-2027 to 07-Jan-2028

Vista	30300 AUD pp
Medallion	51000 AUD pp
Silver	52500 AUD pp
Royal 1 Bedroom	56900 AUD pp
Grand 1 Bedroom	62800 AUD pp
Owner 1 Bedroom	68700 AUD pp
Royal 2 Bedroom	86800 AUD pp
Grand 2 Bedroom	92700 AUD pp
Owner 2 Bedroom	96000 AUD pp
Veranda	0 pp
Midship Veranda	0 pp

Wild Earth Travel

Small Ships, Big Adventures

0800 945 3327 (within New Zealand) | +64 (0) 3 365 1355 | 1800 107 715 (within Australia)

info@wildearth-travel.com | wildearth-travel.com

Wild Earth Travel

Small Ships, Big Adventures

wildearth-travel.com

info@wildearth-travel.com

PRICING

05-Jan-2028 to 15-Jan-2028

Vista	31200 AUD pp
Medallion	53400 AUD pp
Silver	55000 AUD pp
Royal 1 Bedroom	59900 AUD pp
Grand 1 Bedroom	66300 AUD pp
Owner 1 Bedroom	72800 AUD pp
Royal 2 Bedroom	90600 AUD pp
Grand 2 Bedroom	97000 AUD pp
Owner 2 Bedroom	100900 AUD pp
Midship Veranda	0 pp
Veranda	0 pp

14-Jan-2028 to 25-Jan-2028

Vista	30100 AUD pp
Medallion	51900 AUD pp
Silver	53400 AUD pp
Royal 1 Bedroom	58200 AUD pp
Grand 1 Bedroom	64400 AUD pp
Owner 1 Bedroom	70700 AUD pp
Royal 2 Bedroom	87800 AUD pp
Grand 2 Bedroom	94000 AUD pp
Owner 2 Bedroom	97800 AUD pp
Veranda	0 pp
Midship Veranda	0 pp

23-Jan-2028 to 02-Feb-2028

Vista	29700 AUD pp
Medallion	51900 AUD pp
Silver	53500 AUD pp
Royal 1 Bedroom	58400 AUD pp
Grand 1 Bedroom	64900 AUD pp
Owner 1 Bedroom	71300 AUD pp
Royal 2 Bedroom	87700 AUD pp
Grand 2 Bedroom	94200 AUD pp
Owner 2 Bedroom	98000 AUD pp
Veranda	0 pp
Midship Veranda	0 pp

Wild Earth Travel

Small Ships, Big Adventures

0800 945 3327 (within New Zealand) | +64 (0) 3 365 1355 | 1800 107 715 (within Australia)

info@wildearth-travel.com | wildearth-travel.com

Wild Earth Travel

Small Ships, Big Adventures

wildearth-travel.com

info@wildearth-travel.com

PRICING

01-Feb-2028 to 12-Feb-2028

Vista	31200 AUD pp
Medallion	53400 AUD pp
Silver	55000 AUD pp
Royal 1 Bedroom	59900 AUD pp
Grand 1 Bedroom	66300 AUD pp
Owner 1 Bedroom	72800 AUD pp
Royal 2 Bedroom	90600 AUD pp
Grand 2 Bedroom	97000 AUD pp
Owner 2 Bedroom	100900 AUD pp
Veranda	0 pp
Midship Veranda	0 pp

Vista	29300 AUD pp
Medallion	51000 AUD pp
Silver	52500 AUD pp
Royal 1 Bedroom	57100 AUD pp
Grand 1 Bedroom	63200 AUD pp
Owner 1 Bedroom	69300 AUD pp
Royal 2 Bedroom	86100 AUD pp
Grand 2 Bedroom	92200 AUD pp
Owner 2 Bedroom	95700 AUD pp
Veranda	0 pp
Midship Veranda	0 pp

10-Feb-2028 to 20-Feb-2028

Vista	27500 AUD pp
Medallion	50700 AUD pp
Silver	52400 AUD pp
Royal 1 Bedroom	57100 AUD pp
Grand 1 Bedroom	63200 AUD pp
Owner 1 Bedroom	69600 AUD pp
Royal 2 Bedroom	84500 AUD pp
Grand 2 Bedroom	90600 AUD pp
Owner 2 Bedroom	94400 AUD pp
Midship Veranda	0 pp
Veranda	0 pp

19-Feb-2028 to 01-Mar-2028

Wild Earth Travel
Small Ships, Big Adventures

0800 945 3327 (within New Zealand) | +64 (0) 3 365 1355 | 1800 107 715 (within Australia)

info@wildearth-travel.com | wildearth-travel.com



Wild Earth Travel

Small Ships, Big Adventures



wildearth-travel.com

info@wildearth-travel.com

PRICING

28-Feb-2028 to 09-Mar-2028

Vista	27200 AUD pp
Medallion	49900 AUD pp
Silver	51300 AUD pp
Royal 1 Bedroom	55700 AUD pp
Grand 1 Bedroom	61600 AUD pp
Owner 1 Bedroom	67500 AUD pp
Royal 2 Bedroom	82800 AUD pp
Grand 2 Bedroom	88700 AUD pp
Owner 2 Bedroom	92000 AUD pp
Veranda	0 pp
Midship Veranda	0 pp



Wild Earth Travel
Small Ships, Big Adventures

0800 945 3327 (within New Zealand) | +64 (0) 3 365 1355 | 1800 107 715 (within Australia)

info@wildearth-travel.com | wildearth-travel.com