

Wild Earth Travel

Small Ships, Big Adventures

wildearth-travel.com

info@wildearth-travel.com

12 DAYS LUXURY ANTARCTICA CRUISE - KING GEORGE ISLAND TO PUERTO WILLIAMS

An exhilarating expedition to the most extreme and extraordinary environment on Earth. Voyage to Antarctica's immaculate, ice-laden beauty - a frozen continent of stark salt and pepper mountains, where close-up encounters with whales and penguins await. Led by our experienced expedition team, spend full days exploring the Peninsula on unforgettable hikes and Zodiac excursions. We'll make landfall on the South Shetlands before a dramatic Drake Passage crossing.



ITINERARY

Days 1 - 3 - Pre Cruise & King George Island

_ ****Pre Cruise Benefits**** _

_ ****Hotel**** _

_ ****Charter flights**** _

_ ****Hotel**** _

_ ****Charter flights**** _

As the largest of all the South Shetland Islands, King George is considered the

Wild Earth Travel

Small Ships, Big Adventures

0800 945 3327 (within New Zealand) | +64 (0) 3 365 1355 | 1800 107 715 (within Australia)

info@wildearth-travel.com | wildearth-travel.com

Wild Earth Travel

Small Ships, Big Adventures

wildearth-travel.com

info@wildearth-travel.com

gateway to Antarctica. At just 120 kilometers from the Antarctic Peninsula and the only airport in the South Shetlands, it is the connection between "real life" and "Antarctic life". More than 10 different nations have year-round or summer-only scientific research stations on the island (considering that 90% of the island is covered by snow and ice, that is quite an achievement!). Maintaining a base on the island allows membership in the Antarctic Treaty. There is even a Russian Orthodox church, with a permanent on-site priest. The island might be home to a few international scientists, but they are very much outnumbered by the diverse wildlife that considers King George Island rightfully theirs. Adelie, Chinstrap, and Gentoo Penguins all commute to and from the Antarctic Peninsula from the island, while Weddell and leopard seals are regular visitors and can be spotted either in the water or on the shore. Naturally, this brings a huge amount of birdlife: skuas and southern giant petrels are regular summer residents, attracted by the warm climate (warm being a relative term, average temperature is between 1.5 and -6.5 °C). The island was named after King George III after a British explorer discovered it in 1819. Since then the island has been claimed by both Chile (1940), and Argentina (1943), but remains part of British Antarctic Territory.

Day 4 - Antarctic Sound

Few voyages ignite the imagination like a journey down to one of the planet's most remote, extreme, and enchanting wilderness, Antarctica. An adventure in its purest form, only a handful of people will ever be lucky enough to experience the majestic beauty of these monochrome landscapes first-hand. The Antarctic Sound will be one of your first encounters with this whitewash kingdom, located at the northerly tip of the Antarctic Peninsula - which sprawls up like a tentacle towards Tierra del Fuego, South America's most southerly point, otherwise known as the "End of the World". Taking its name from the first ship to brave the passageway between the peninsular and the Joinville Island groups back in 1902, the Sound is a raw, sensory assault of imposing iceberg slabs, broken away from the disintegrating Larsen Ice Shelf. Come face-to-face with arena-sized islands of ice and meet the extraordinary birdlife that calls this whitewash kingdom home. Watch on, as colonies of Gentoo penguins hop around, and cape petrels sweep overhead, as the continent's unique wildlife thrives around you. If you're planning your first venture into Antarctica, you'll want to brush up on your photography skills in advance, to capture this unforgiving continent in all of its unrestrained glory.

Days 5 - 7 Antarctic Peninsula

The Antarctic Peninsula unravels upwards towards South America, reaching out

a beckoning finger to the adventurous, who dare to explore this untamed realm. Stretching up from the heart of the world's southernmost continent, the Antarctic Peninsula lies a mere 620 miles from Tierra del Fuego and, for many, offers a spectacular first taste of the snow-blanketed landscapes and colossal ice sculptures, which make up Earth's least-explored continent. Unseen by humans until 1820 - a blink of an eye ago in relative terms - this is an adventure sure to make your hairs stand on end, as you experience the thrill of the truly unknown and extraordinary. The vast peninsula is sprinkled with research bases, which are at the frontline of human scientific endeavor, pushing to study and understand this unique landscape, its exceptional wildlife, and the impact that humans are having on this pristine continent. Witness cathedral-sized icebergs up close, and blue-hued glaciers, slowly slipping from imposing locations like Hope Bay. Blanched mountain peaks cover the peninsula, and you'll find thousands of adorable Adelie penguin pairs thriving undisturbed in this peninsula's unique setting.

Day 8 - South Shetland Islands

The ice-coated Antarctic Peninsula forms perhaps the most accessible region of mainland Antarctica, lying a mere 480 miles away from South America, across the fabled waters of Drake's Passage. Lying close to the northwestern tip of the Antarctic Peninsula, separated by the Bransfield Strait, the South Shetland Islands fall under the jurisdiction of the Antarctic Treaty, suspending claims on their sovereignty. Several countries maintain research bases here, and with plump elephant seals, and crowds of Gentoo, Chinstrap, and Adelie Penguins also calling the islands home, it can even feel a little crowded at times. King George Island is the largest and most hospitable island, hosting the majority of the research stations - some of which are populated all year round by tiny, hardy crews. Don't be fooled though, these islands offer extraordinary adventure in one of the most remote locations on Earth. The triple peaks of Mount Foster tower above the archipelago, and you'll feel your heart pumping a little quicker, as you sail into the core of Deception Island's magnificent collapsed volcano caldera. Hike the lunar landscapes within, and even dip into the improbably warm, geothermally heated waters of Pendulum Cove. Elephant Island, meanwhile, is written deep into the annals of Antarctic expedition legend, as the site where Ernest Shackleton and the stricken crew of the Endurance miraculously survived a harsh Antarctic winter, in 1916.

Day 9 - Drake Passage

Sailing the legendary Drake Passage is an experience that few are ever lucky enough to experience. The southern tip of the Americas already feels like a

Wild Earth Travel

Small Ships, Big Adventures

0800 945 3327 (within New Zealand) | +64 (0) 3 365 1355 | 1800 107 715 (within Australia)

info@wildearth-travel.com | wildearth-travel.com



Wild Earth Travel

Small Ships, Big Adventures



wildearth-travel.com

info@wildearth-travel.com

wild enough environment - but the sensation of watching the distant cliffs of the peninsular known as the "End of the World" fade into the horizon, is one that's equal parts epic, eerie, and magical. Set sail, to slowly drop off the bottom of the map from Cape Horn, and voyage on an expedition down into the icy underworld of Antarctica. Drake Passage is an extraordinary voyage of romantic ocean-faring legend, as you aim for Antarctica's icy realm. On arrival, skyscraper-sized icebergs salute you, as you traverse the waters of this continent where snow and ice-dwelling creatures like penguins and whales roam undisturbed. Your first sight of this most unexplored place will most likely be the South Shetland Islands. Walk in the footsteps of some of history's greatest and bravest explorers as you explore famed, snow-covered landmasses like Elephant and Deception Island. If the journey across Drake Passage sounds daunting, don't worry - even in rough seas you're never alone, and will often be accompanied on this spine-tingling adventure by soaring albatrosses and maybe even a protective pod of humpbacks and hourglass dolphins or two. Converging warm and cool ocean currents attract some spectacular animal life to the passage.

**Charter flights**

Please note:

Itineraries are subject to change.

Days 10 - 12 - Puerto Williams & Post Cruise

Puerto Williams is a Chilean city located on Navarino Island on the southern shores of the Beagle Channel. It claims to be the "southernmost city in the world", however owing to its small size - 2,500 residents approximately - the much larger Argentinean city of Ushuaia, which sits on the northern side of the same channel, also claims that title. The surrounding scenery is magnificent. The wild windswept mountains rise above the tree line and are regularly dusted with snow. The city itself has the dramatic backdrop called "Dientes de Navarino" (literally "teeth of Navarino"), which rivals the famous Torres del Paine further to the north. The area was originally used by the Yaghan people, hunter-gatherers who despite enduring the harsh regional climate, could not weather the arrival of Europeans. The current city was established as a naval base in 1953 and honors the British-Chilean naval commander John Williams Wilson of the 19th century. Initially it served to protect territorial possessions and fishing rights of the area, as well as offering logistical support to Antarctic bases. More recently it has become a departure point for scientific and tourism trips to the Antarctic region. In contrast to the bustle and traffic of a very commercial Ushuaia, Puerto Williams offers a quieter, more relaxed experience. It charms the visitor with a small village feel, complete with rustic buildings and the homely smell of drifting wood smoke. A haven of peace at the end of the world.

**Post Cruise Benefits**



Wild Earth Travel

Small Ships, Big Adventures

0800 945 3327 (within New Zealand) | +64 (0) 3 365 1355 | 1800 107 715 (within Australia)

info@wildearth-travel.com | wildearth-travel.com

Wild Earth Travel

Small Ships, Big Adventures



wildearth-travel.com

info@wildearth-travel.com

YOUR SHIP: SILVER CLOUD

YOUR SHIP:	Silver Cloud
VESSEL TYPE:	Luxury Expedition
LENGTH:	157 m
PASSENGER CAPACITY:	200/260
BUILT/REFURBISHED:	1994 Refurbished & Rebranded



Silver Cloud delivers one of the most personalised expedition experiences at sea, blending ultra-luxury with true adventure. As Silversea's first crossover ship, she's built for both comfort and exploration, offering large ocean-facing suites--80% with verandas--and an impressive 1:1 crew-to-guest ratio. With 20 Zodiacs and 10 kayaks, guests enjoy unparalleled access to remote locations, while expert-led excursions ensure meaningful encounters with nature and culture alike. From the icy reaches of Antarctica to the sun-kissed South Pacific, Silver Cloud brings the remarkable within easy reach.

On board, refined living continues with four elegant dining venues, including French fine dining at La Dame and authentic Italian at La Terrazza. Relax in stylish public areas such as the Panorama Lounge or Connoisseur's Corner, indulge in world-class spa treatments, or learn more about your destinations from passionate experts in the Explorer Lounge. Whether you're cruising the Kimberley or the Chilean fjords, Silver Cloud offers a sophisticated base for discovering the far corners of the world in sublime comfort.

Wild Earth Travel

Small Ships, Big Adventures

0800 945 3327 (within New Zealand) | +64 (0) 3 365 1355 | 1800 107 715 (within Australia)

info@wildearth-travel.com | wildearth-travel.com

Wild Earth Travel

Small Ships, Big Adventures

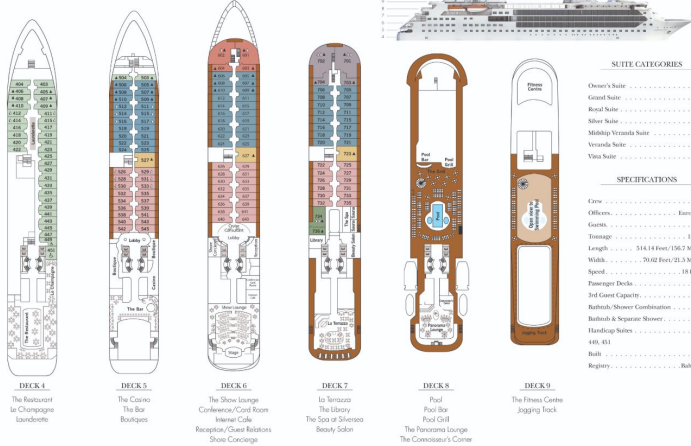


wildeath-travel.com

info@wildeath-travel.com

INSIDE YOUR SHIP

Silver Cloud – DECK PLAN



SUITE CATEGORIES	
Owner's Suite	●
Grand Suite	●
Royal Suite	●
Silver Suite	●
Midship Veranda Suite	●
Veranda Suite	●
Vista Suite	●

SPECIFICATIONS	
Crew	1022
Officers	120
Guests	296
Tonnage	19,000
Length	244.88 Metres (802.7 Feet)
Width	20.02 Metres (65.7 Feet)
Speed	18 Knots
Passenger Decks	6
Inf/Guest Capacity	4
Bathrooms & Shower Combinations	4
Handicap Suites	48
110-121	110-121
Bath	1954
Registry	Barbados

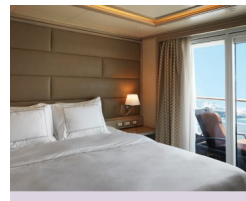
Classic Veranda



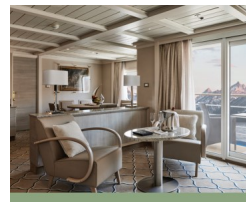
Grand 1 Bedroom



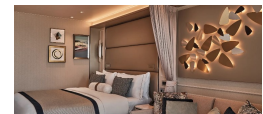
Medallion



Owner 1 Bedroom



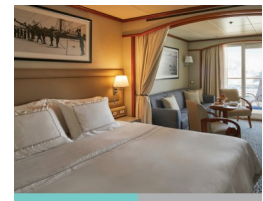
Deluxe Veranda



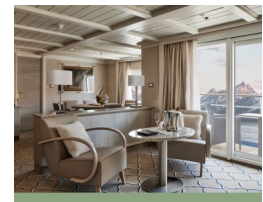
Grand 2 Bedroom



Midship Veranda



Owner 2 Bedroom



Wild Earth Travel

Small Ships, Big Adventures

wildearth-travel.com

info@wildearth-travel.com

PRICING

27-Oct-2026 to 07-Nov-2026

Vista	30300 AUD pp
Medallion	43100 AUD pp
Silver	44600 AUD pp
Royal 1 Bedroom	48800 AUD pp
Grand 1 Bedroom	53400 AUD pp
Owner 1 Bedroom	58500 AUD pp
Royal 2 Bedroom	85500 AUD pp
Owner 2 Bedroom	85800 AUD pp
Grand 2 Bedroom	90100 AUD pp
Veranda	0 pp
Midship Veranda	0 pp

Vista	42300 AUD pp
Veranda	51200 AUD pp
Midship Veranda	53000 AUD pp
Medallion	83200 AUD pp
Silver	89200 AUD pp
Royal 1 Bedroom	97200 AUD pp
Grand 1 Bedroom	106100 AUD pp
Owner 1 Bedroom	115800 AUD pp
Royal 2 Bedroom	143300 AUD pp
Grand 2 Bedroom	152200 AUD pp
Owner 2 Bedroom	153900 AUD pp

02-Dec-2026 to 12-Dec-2026

Vista	37600 AUD pp
Medallion	50100 AUD pp
Silver	51800 AUD pp
Royal 1 Bedroom	54400 AUD pp
Grand 1 Bedroom	57200 AUD pp
Owner 1 Bedroom	61800 AUD pp
Royal 2 Bedroom	90900 AUD pp
Grand 2 Bedroom	93700 AUD pp
Owner 2 Bedroom	95600 AUD pp
Midship Veranda	0 pp
Veranda	0 pp

28-Dec-2026 to 08-Jan-2027

Wild Earth Travel
Small Ships, Big Adventures

0800 945 3327 (within New Zealand) | +64 (0) 3 365 1355 | 1800 107 715 (within Australia)

info@wildearth-travel.com | wildearth-travel.com

Wild Earth Travel

Small Ships, Big Adventures

wildearth-travel.com

info@wildearth-travel.com

PRICING

13-Jan-2027 to 24-Jan-2027

Vista	38300 AUD pp
Medallion	49200 AUD pp
Silver	49700 AUD pp
Royal 1 Bedroom	58600 AUD pp
Grand 1 Bedroom	64000 AUD pp
Owner 1 Bedroom	70000 AUD pp
Royal 2 Bedroom	96600 AUD pp
Grand 2 Bedroom	102000 AUD pp
Owner 2 Bedroom	104500 AUD pp
Midship Veranda	0 pp
Veranda	0 pp

Vista	28600 AUD pp
Medallion	47500 AUD pp
Silver	48000 AUD pp
Royal 1 Bedroom	58000 AUD pp
Grand 1 Bedroom	64000 AUD pp
Owner 1 Bedroom	70600 AUD pp
Royal 2 Bedroom	86400 AUD pp
Grand 2 Bedroom	92400 AUD pp
Owner 2 Bedroom	96300 AUD pp
Midship Veranda	0 pp
Veranda	0 pp

31-Jan-2027 to 11-Feb-2027

Vista	30600 AUD pp
Medallion	46200 AUD pp
Silver	46600 AUD pp
Royal 1 Bedroom	55500 AUD pp
Grand 1 Bedroom	60900 AUD pp
Owner 1 Bedroom	66900 AUD pp
Royal 2 Bedroom	86100 AUD pp
Grand 2 Bedroom	91500 AUD pp
Owner 2 Bedroom	94400 AUD pp
Midship Veranda	0 pp
Veranda	0 pp

18-Feb-2027 to 01-Mar-2027

Wild Earth Travel
Small Ships, Big Adventures

0800 945 3327 (within New Zealand) | +64 (0) 3 365 1355 | 1800 107 715 (within Australia)

info@wildearth-travel.com | wildearth-travel.com

Wild Earth Travel

Small Ships, Big Adventures

wildearth-travel.com

info@wildearth-travel.com

PRICING

08-Mar-2027 to 18-Mar-2027

Vista	26800 AUD pp
Medallion	53500 AUD pp
Silver	54000 AUD pp
Royal 1 Bedroom	65200 AUD pp
Grand 1 Bedroom	72000 AUD pp
Owner 1 Bedroom	79400 AUD pp
Royal 2 Bedroom	91900 AUD pp
Grand 2 Bedroom	98700 AUD pp
Owner 2 Bedroom	103500 AUD pp
Midship Veranda	0 pp
Veranda	0 pp

Vista	23200 AUD pp
Medallion	40600 AUD pp
Silver	42000 AUD pp
Royal 1 Bedroom	46200 AUD pp
Grand 1 Bedroom	51700 AUD pp
Owner 1 Bedroom	57100 AUD pp
Royal 2 Bedroom	71700 AUD pp
Grand 2 Bedroom	77200 AUD pp
Owner 2 Bedroom	78000 AUD pp
Veranda	0 pp
Midship Veranda	0 pp

27-Oct-2027 to 07-Nov-2027

Classic Veranda	32800 AUD pp
Superior Veranda	34500 AUD pp
Deluxe Veranda	36300 AUD pp
Premium Veranda	37100 AUD pp
Silver	49800 AUD pp
Grand 1 Bedroom	104800 AUD pp
Owner 1 Bedroom	114500 AUD pp

11-Nov-2027 to 22-Nov-2027

Wild Earth Travel
Small Ships, Big Adventures

0800 945 3327 (within New Zealand) | +64 (0) 3 365 1355 | 1800 107 715 (within Australia)

info@wildearth-travel.com | wildearth-travel.com

Wild Earth Travel

Small Ships, Big Adventures

wildearth-travel.com

info@wildearth-travel.com

PRICING

29-Nov-2027 to 10-Dec-2027

Vista	27900 AUD pp
Medallion	44800 AUD pp
Silver	46200 AUD pp
Royal 1 Bedroom	50800 AUD pp
Grand 1 Bedroom	56600 AUD pp
Owner 1 Bedroom	62600 AUD pp
Royal 2 Bedroom	78000 AUD pp
Grand 2 Bedroom	83800 AUD pp
Owner 2 Bedroom	87700 AUD pp
Midship Veranda	0 pp
Veranda	0 pp

17-Dec-2027 to 28-Dec-2027

Vista	26300 AUD pp
Medallion	42800 AUD pp
Silver	44300 AUD pp
Royal 1 Bedroom	48500 AUD pp
Grand 1 Bedroom	54300 AUD pp
Owner 1 Bedroom	60000 AUD pp
Royal 2 Bedroom	77500 AUD pp
Grand 2 Bedroom	83300 AUD pp
Owner 2 Bedroom	83700 AUD pp
Veranda	0 pp
Midship Veranda	0 pp

04-Jan-2028 to 15-Jan-2028

Vista	27700 AUD pp
Medallion	50500 AUD pp
Silver	52200 AUD pp
Royal 1 Bedroom	57200 AUD pp
Grand 1 Bedroom	64000 AUD pp
Owner 1 Bedroom	70800 AUD pp
Royal 2 Bedroom	87500 AUD pp
Grand 2 Bedroom	94300 AUD pp
Owner 2 Bedroom	95700 AUD pp
Midship Veranda	0 pp
Veranda	0 pp

Wild Earth Travel

Small Ships, Big Adventures

0800 945 3327 (within New Zealand) | +64 (0) 3 365 1355 | 1800 107 715 (within Australia)

info@wildearth-travel.com | wildearth-travel.com

Wild Earth Travel

Small Ships, Big Adventures

wildearth-travel.com

info@wildearth-travel.com

PRICING

22-Jan-2028 to 02-Feb-2028

Vista	27700 AUD pp
Medallion	50500 AUD pp
Silver	52200 AUD pp
Royal 1 Bedroom	57200 AUD pp
Grand 1 Bedroom	64000 AUD pp
Owner 1 Bedroom	70800 AUD pp
Royal 2 Bedroom	87500 AUD pp
Grand 2 Bedroom	94300 AUD pp
Owner 2 Bedroom	95700 AUD pp
Midship Veranda	0 pp
Veranda	0 pp

Vista	25400 AUD pp
Medallion	57400 AUD pp
Silver	59200 AUD pp
Royal 1 Bedroom	65100 AUD pp
Grand 1 Bedroom	72800 AUD pp
Owner 1 Bedroom	80500 AUD pp
Royal 2 Bedroom	93500 AUD pp
Grand 2 Bedroom	101200 AUD pp
Owner 2 Bedroom	103400 AUD pp
Midship Veranda	0 pp
Veranda	0 pp

09-Feb-2028 to 20-Feb-2028

Vista	25200 AUD pp
Medallion	54800 AUD pp
Silver	56600 AUD pp
Royal 1 Bedroom	62000 AUD pp
Grand 1 Bedroom	69200 AUD pp
Owner 1 Bedroom	76600 AUD pp
Royal 2 Bedroom	90000 AUD pp
Grand 2 Bedroom	97200 AUD pp
Owner 2 Bedroom	99300 AUD pp
Midship Veranda	0 pp
Veranda	0 pp

27-Feb-2028 to 09-Mar-2028

Wild Earth Travel
Small Ships, Big Adventures

0800 945 3327 (within New Zealand) | +64 (0) 3 365 1355 | 1800 107 715 (within Australia)

info@wildearth-travel.com | wildearth-travel.com