

Wild Earth Travel

Small Ships, Big Adventures

wildearth-travel.com

info@wildearth-travel.com

9 DAYS LUXURY ANTARCTICA EXPEDITION - KING GEORGE ISLAND TO KING GEORGE ISLAND

Set sail for the world's most coveted destination. This voyage sees you fly in to the heart of the South Shetland Islands, aka the gateway to Antarctica. Board Silver Cloud directly from King George Island, and begin your Antarctic adventure straight away. Weave through towering icebergs, enjoy snowy hikes and set your cameras ready for abundant and spectacular wildlife and breathtaking scenery. We promise this singular journey will take you from tourist to traveller in just 7-days.



ITINERARY

Days 0 - 1 - Pre Cruise & King George Island

- ****Pre Cruise Benefits**** —
- ****Private Executive Transfers**** —
- ****International flights - Economy class**** —
- ****or Business Class upgrade**** —
- ****In-country flights/Group flights**** —
- ****Hotel**** —

As the largest of all the South Shetland Islands, King George is considered the gateway to Antarctica. At just 120 kilometres from the Antarctic Peninsula and the only airport in the South Shetlands, it is the connection between "real life" and "Antarctic life". More than 10 different nations have year-round or

Wild Earth Travel

Small Ships, Big Adventures

0800 945 3327 (within New Zealand) | +64 (0) 3 365 1355 | **1800 107 715** (within Australia)

info@wildearth-travel.com | **wildearth-travel.com**

Wild Earth Travel

Small Ships, Big Adventures

wildearth-travel.com

info@wildearth-travel.com

summer-only scientific research stations on the island (considering that 90% of the island is covered by snow and ice, that is quite an achievement!). Maintaining a base on the island allows membership of the Antarctic Treaty. There is even a Russian Orthodox church, with a permanent on-site priest. The island might be home to a few international scientists, but they are very much outnumbered by the diverse wildlife that considers King George Island rightfully theirs. Adelie, Chinstrap and Gentoo Penguins all commute to and from the Antarctic peninsula from the island, while Weddell and leopard seals are regular visitors and can be spotted either in the water or on the shore. Naturally, this brings a huge amount of birdlife: skuas and southern giant petrels are regular summer residents, attracted by the warm climate (warm being a relative term, average temperature is between 1.5 and -6.5°C). The island was named after King George III after British explorer discovered it in 1819. Since then the island has been claimed by both Chile (1940) and Argentina (1943), but remains part of British Antarctic Territory.

Day 2 - Antarctic Sound

Few voyages ignite the imagination like a journey down to one of the planet's most remote, extreme and enchanting wilderness, Antarctica. An adventure in its purest form, only a handful of people will ever be lucky enough to experience the majestic beauty of these monochrome landscapes first-hand. The Antarctic Sound will be one of your first encounters of this whitewash kingdom, located at the northerly tip of the Antarctic Peninsula - which sprawls up like a tentacle towards Tierra del Fuego, South America's most southerly point, otherwise known as the 'End of the World'. Taking its name from the first ship to brave the passageway between the peninsular and the Joinville Island groups back in 1902, the Sound is a raw, sensory assault of imposing iceberg slabs, broken away from the disintegrating Larsen Ice Shelf. Come face-to-face with stadium-sized islands of ice and meet the extraordinary birdlife that call this whitewash kingdom home. Watch on, as colonies of Gentoo penguins hop around, and cape petrels sweep overhead, as the continent's unique wildlife thrives around you. If you're planning your first venture into Antarctica, you'll want to brush up on your photography skills in advance, to capture this unforgiving continent in all of its unrestrained glory. Read our blog for tips on how to ensure that your photos do justice to the adventure of a lifetime.

Days 3 - 5 - Antarctic Peninsula

The Antarctic Peninsula unravels upwards towards South America, reaching out a beckoning finger to the adventurous, who dare to explore this untamed realm. Stretching up from the heart of the world's southernmost continent, the

Antarctic Peninsula lies a mere 620 mile from Tierra del Fuego and, for many, offers a spectacular first taste of the snow-blanketed landscapes and colossal ice sculptures, which make up Earth's least-explored continent. Unseen by humans until 1820 - a blink of an eye ago in relative terms - this is an adventure sure to make your hairs stand on end, as you experience the thrill of the truly unknown and extraordinary. The vast peninsula is sprinkled with research bases, which are at the frontline of human scientific endeavour, pushing to study and understand this unique landscape, its exceptional wildlife, and the impact that humans are having on this pristine continent. Witness cathedral-sized icebergs up close, and blue-hued glaciers, slowly slipping from imposing locations like Hope Bay. Blanched mountain peaks cover the peninsula, and you'll find thousands of adorable Adelie penguin pairs thriving undisturbed in this peninsula's unique setting.

Day 6 - South Shetland Islands

The ice-coated Antarctic Peninsula forms perhaps the most accessible region of mainland Antarctica, lying a mere 480-miles away from South America, across the fabled waters of Drakes Passage. Lying close to the northwestern tip of the Antarctic Peninsula, separated by the Bransfield Strait, the South Shetland Islands fall under the jurisdiction of the Antarctic Treaty, suspending claims on their sovereignty. Several countries maintain research bases here, and with plump elephant seals, and crowds of Gentoo, Chinstrap and Adelie Penguins also calling the islands home, it can even feel a little crowded at times. King George Island is the largest and most hospitable island, hosting the majority of the research stations - some of which are populated all-year-round by tiny, hardy crews. Don't be fooled though, these islands offer extraordinary adventure in one of the most remote locations on earth. The triple peaks of Mount Foster tower above the archipelago, and you'll feel your heart pumping a little quicker, as you sail into the core of Deception Island's magnificent collapsed volcano caldera. Hike the luna landscapes within, and even dip into the improbably warm, geothermally-heated waters of Pendulum Cove. Elephant Island, meanwhile, is written deep into the annals of Antarctic expedition legend, as the site where Ernest Shackleton and the stricken crew of the Endurance miraculously survived a harsh Antarctic winter, in 1916.

Day 7 - King George Island

As the largest of all the South Shetland Island, King George is considered the gateway to Antarctica. At just 120 kilometres from the Antarctic Peninsula and the only airport in the South Shetlands, it is the connection between "real life" and "Antarctic life". More than 10 different nations have year-round or

Wild Earth Travel

Small Ships, Big Adventures

0800 945 3327 (within New Zealand) | +64 (0) 3 365 1355 | **1800 107 715** (within Australia)

info@wildearth-travel.com | wildearth-travel.com

Wild Earth Travel

Small Ships, Big Adventures

wildearth-travel.com

info@wildearth-travel.com

summer-only scientific research stations on the island (considering that 90% of the island is covered by snow and ice, that is quite an achievement!). Maintaining a base on the island allows membership of the Antarctic Treaty. There is even a Russian Orthodox church, with a permanent on-site priest. The island might be home to a few international scientists, but they are very much outnumbered by the diverse wildlife that considers King George Island rightfully theirs. Adelie, Chinstrap and Gentoo Penguins all commute to and from the Antarctic peninsula from the island, while Weddell and leopard seals are regular visitors and can be spotted either in the water or on the shore. Naturally, this brings a huge amount of birdlife: skuas and southern giant petrels are regular summer residents, attracted by the warm climate (warm being a relative term, average temperature is between 1.5 and -6.5°C). The island was named after King George III after British explorer discovered it in 1819. Since then the island has been claimed by both Chile (1940) and Argentina (1943), but remains part of British Antarctic Territory.

Day 8 - Post Cruise

- _ ****Post Cruise Benefits**** _
- _ ****Hotel**** _
- _ ****In-country flights/Group flights**** _
- _ ****International flights - Economy class**** _
- _ ****or Business Class upgrade**** _
- _ ****Private Executive Transfers**** _

Please note:

Itineraries are subject to change.

Wild Earth Travel

Small Ships, Big Adventures

wildearth-travel.com

info@wildearth-travel.com

YOUR SHIP: SILVER CLOUD

YOUR SHIP:	Silver Cloud
VESSEL TYPE:	Luxury Expedition
LENGTH:	157 m
PASSENGER CAPACITY:	200/260
BUILT/REFURBISHED:	1994 Refurbished & Rebranded

Silver Cloud delivers one of the most personalised expedition experiences at sea, blending ultra-luxury with true adventure. As Silversea's first crossover ship, she's built for both comfort and exploration, offering large ocean-facing suites--80% with verandas--and an impressive 1:1 crew-to-guest ratio. With 20 Zodiacs and 10 kayaks, guests enjoy unparalleled access to remote locations, while expert-led excursions ensure meaningful encounters with nature and culture alike. From the icy reaches of Antarctica to the sun-kissed South Pacific, Silver Cloud brings the remarkable within easy reach.

On board, refined living continues with four elegant dining venues, including French fine dining at La Dame and authentic Italian at La Terrazza. Relax in stylish public areas such as the Panorama Lounge or Connoisseur's Corner, indulge in world-class spa treatments, or learn more about your destinations from passionate experts in the Explorer Lounge. Whether you're cruising the Kimberley or the Chilean fjords, Silver Cloud offers a sophisticated base for discovering the far corners of the world in sublime comfort.



Wild Earth Travel

Small Ships, Big Adventures

0800 945 3327 (within New Zealand) | +64 (0) 3 365 1355 | **1800 107 715** (within Australia)

info@wildearth-travel.com | wildearth-travel.com

Wild Earth Travel

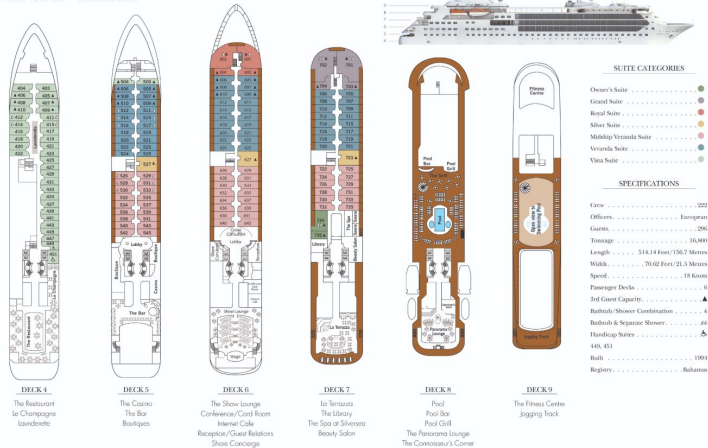
Small Ships, Big Adventures

wildearth-travel.com

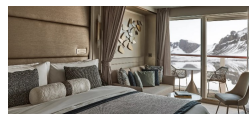
info@wildearth-travel.com

INSIDE YOUR SHIP

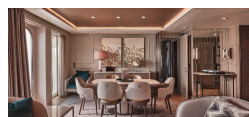
Silver Cloud - DECK PLAN



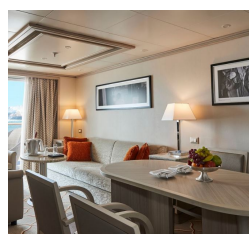
Classic Veranda



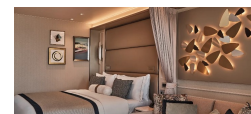
Grand 1 Bedroom



Medallion



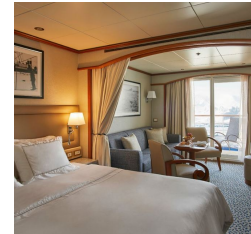
Deluxe Veranda



Grand 2 Bedroom



Midship Veranda



Wild Earth Travel

Small Ships, Big Adventures

0800 945 3327 (within New Zealand) | +64 (0) 3 365 1355 | 1800 107 715 (within Australia)

info@wildearth-travel.com | wildearth-travel.com

Wild Earth Travel

Small Ships, Big Adventures

wildearth-travel.com

info@wildearth-travel.com

PRICING

24-Oct-2025 to 01-Nov-2025

Classic Veranda	16600 USD pp
Superior Veranda	18500 USD pp
Deluxe Veranda	19100 USD pp
Premium Veranda	19400 USD pp
Silver	34700 USD pp
Grand 1 Bedroom	63000 USD pp
Owner 1 Bedroom	83200 USD pp

11-Nov-2025 to 19-Nov-2025

Classic Veranda	21000 USD pp
Superior Veranda	22400 USD pp
Deluxe Veranda	23100 USD pp
Premium Veranda	23600 USD pp
Silver	38200 USD pp
Grand 1 Bedroom	66500 USD pp
Owner 1 Bedroom	86700 USD pp

30-Oct-2025 to 07-Nov-2025

Classic Veranda	18200 USD pp
Superior Veranda	19400 USD pp
Deluxe Veranda	20100 USD pp
Premium Veranda	20300 USD pp
Silver	36900 USD pp
Grand 1 Bedroom	65300 USD pp
Owner 1 Bedroom	85400 USD pp

05-Nov-2025 to 13-Nov-2025

Classic Veranda	21000 USD pp
Superior Veranda	22400 USD pp
Deluxe Veranda	23100 USD pp
Premium Veranda	23600 USD pp
Silver	38200 USD pp
Grand 1 Bedroom	66500 USD pp
Owner 1 Bedroom	86700 USD pp

Wild Earth Travel

Small Ships, Big Adventures

wildearth-travel.com

info@wildearth-travel.com

PRICING

06-Jan-2026 to 14-Jan-2026

Vista	24200 USD pp
Veranda	25800 USD pp
Midship Veranda	27200 USD pp
Medallion	32200 USD pp
Silver	36100 USD pp
Royal 1 Bedroom	39300 USD pp
Grand 1 Bedroom	42900 USD pp
Owner 1 Bedroom	46800 USD pp
Royal 2 Bedroom	62500 USD pp
Grand 2 Bedroom	66100 USD pp
Owner 2 Bedroom	68600 USD pp

Vista	21200 USD pp
Veranda	23300 USD pp
Midship Veranda	24400 USD pp
Medallion	32400 USD pp
Silver	36300 USD pp
Royal 1 Bedroom	39500 USD pp
Grand 1 Bedroom	43100 USD pp
Owner 1 Bedroom	47000 USD pp
Royal 2 Bedroom	60500 USD pp
Grand 2 Bedroom	64100 USD pp
Owner 2 Bedroom	66100 USD pp

09-Jan-2026 to 17-Jan-2026

Vista	19600 USD pp
Medallion	33300 USD pp
Silver	36200 USD pp
Royal 1 Bedroom	39400 USD pp
Grand 1 Bedroom	43100 USD pp
Owner 1 Bedroom	47000 USD pp
Royal 2 Bedroom	58800 USD pp
Grand 2 Bedroom	62500 USD pp
Owner 2 Bedroom	64600 USD pp
Veranda	0 pp
Midship Veranda	0 pp

12-Jan-2026 to 20-Jan-2026



0800 945 3327 (within New Zealand) | +64 (0) 3 365 1355 | 1800 107 715 (within Australia)

info@wildearth-travel.com | wildearth-travel.com

Wild Earth Travel

Small Ships, Big Adventures

wildearth-travel.com

info@wildearth-travel.com

PRICING

15-Jan-2026 to 23-Jan-2026

Vista	22000 USD pp
Medallion	32700 USD pp
Silver	35600 USD pp
Royal 1 Bedroom	38800 USD pp
Grand 1 Bedroom	43100 USD pp
Owner 1 Bedroom	47000 USD pp
Royal 2 Bedroom	60100 USD pp
Grand 2 Bedroom	64400 USD pp
Owner 2 Bedroom	66800 USD pp
Veranda	0 pp
Midship Veranda	0 pp

Vista	19400 USD pp
Medallion	32500 USD pp
Silver	35400 USD pp
Royal 1 Bedroom	38600 USD pp
Grand 1 Bedroom	42900 USD pp
Owner 1 Bedroom	46800 USD pp
Royal 2 Bedroom	57400 USD pp
Grand 2 Bedroom	61700 USD pp
Owner 2 Bedroom	64300 USD pp
Midship Veranda	0 pp
Veranda	0 pp

18-Jan-2026 to 26-Jan-2026

Vista	22000 USD pp
Veranda	23300 USD pp
Midship Veranda	24400 USD pp
Medallion	32400 USD pp
Silver	36300 USD pp
Royal 1 Bedroom	39500 USD pp
Grand 1 Bedroom	43100 USD pp
Owner 1 Bedroom	47000 USD pp
Royal 2 Bedroom	60500 USD pp
Grand 2 Bedroom	64100 USD pp
Owner 2 Bedroom	66800 USD pp

21-Jan-2026 to 29-Jan-2026



0800 945 3327 (within New Zealand) | +64 (0) 3 365 1355 | **1800 107 715** (within Australia)

info@wildearth-travel.com | wildearth-travel.com

Wild Earth Travel

Small Ships, Big Adventures

wildearth-travel.com

info@wildearth-travel.com

PRICING

24-Jan-2026 to 01-Feb-2026

Vista	21800 USD pp
Veranda	23100 USD pp
Midship Veranda	24200 USD pp
Medallion	32100 USD pp
Silver	37900 USD pp
Royal 1 Bedroom	41300 USD pp
Grand 1 Bedroom	45100 USD pp
Owner 1 Bedroom	49200 USD pp
Royal 2 Bedroom	62100 USD pp
Grand 2 Bedroom	65900 USD pp
Owner 2 Bedroom	68800 USD pp

Vista	22000 USD pp
Veranda	23300 USD pp
Midship Veranda	24400 USD pp
Medallion	32400 USD pp
Silver	36300 USD pp
Royal 1 Bedroom	39500 USD pp
Grand 1 Bedroom	43100 USD pp
Owner 1 Bedroom	47000 USD pp
Royal 2 Bedroom	60500 USD pp
Grand 2 Bedroom	64100 USD pp
Owner 2 Bedroom	66800 USD pp

27-Jan-2026 to 04-Feb-2026

Vista	19600 USD pp
Medallion	32700 USD pp
Silver	35600 USD pp
Royal 1 Bedroom	38800 USD pp
Grand 1 Bedroom	43100 USD pp
Owner 1 Bedroom	47000 USD pp
Royal 2 Bedroom	57800 USD pp
Grand 2 Bedroom	62100 USD pp
Owner 2 Bedroom	64600 USD pp
Midship Veranda	0 pp
Veranda	0 pp

05-Feb-2026 to 13-Feb-2026



0800 945 3327 (within New Zealand) | +64 (0) 3 365 1355 | **1800 107 715** (within Australia)

info@wildearth-travel.com | wildearth-travel.com

Wild Earth Travel

Small Ships, Big Adventures

wildearth-travel.com

info@wildearth-travel.com

PRICING

11-Feb-2026 to 19-Feb-2026

Vista	22200 USD pp
Veranda	23500 USD pp
Midship Veranda	24600 USD pp
Medallion	32600 USD pp
Silver	36500 USD pp
Royal 1 Bedroom	39700 USD pp
Grand 1 Bedroom	43300 USD pp
Owner 1 Bedroom	47200 USD pp
Royal 2 Bedroom	60900 USD pp
Grand 2 Bedroom	64500 USD pp
Owner 2 Bedroom	67200 USD pp

Vista	18500 USD pp
Veranda	19500 USD pp
Midship Veranda	20300 USD pp
Medallion	34600 USD pp
Silver	38500 USD pp
Royal 1 Bedroom	41700 USD pp
Grand 1 Bedroom	45300 USD pp
Owner 1 Bedroom	49200 USD pp
Royal 2 Bedroom	59300 USD pp
Grand 2 Bedroom	62900 USD pp
Owner 2 Bedroom	65900 USD pp

17-Feb-2026 to 25-Feb-2026

Vista	22000 USD pp
Veranda	23300 USD pp
Midship Veranda	24400 USD pp
Medallion	32400 USD pp
Silver	36300 USD pp
Royal 1 Bedroom	39500 USD pp
Grand 1 Bedroom	43100 USD pp
Owner 1 Bedroom	47000 USD pp
Royal 2 Bedroom	60500 USD pp
Grand 2 Bedroom	64100 USD pp
Owner 2 Bedroom	66800 USD pp

23-Feb-2026 to 03-Mar-2026

Wild Earth Travel
Small Ships, Big Adventures

0800 945 3327 (within New Zealand) | +64 (0) 3 365 1355 | **1800 107 715** (within Australia)

info@wildearth-travel.com | wildearth-travel.com

Wild Earth Travel

Small Ships, Big Adventures

wildearth-travel.com

info@wildearth-travel.com

PRICING

18-Oct-2026 to 26-Oct-2026

Classic Veranda	16800 USD pp
Superior Veranda	17600 USD pp
Deluxe Veranda	17900 USD pp
Premium Veranda	18200 USD pp
Silver	31400 USD pp
Grand 1 Bedroom	51600 USD pp
Owner 1 Bedroom	65900 USD pp

05-Nov-2026 to 13-Nov-2026

Classic Veranda	19200 USD pp
Superior Veranda	20100 USD pp
Deluxe Veranda	20500 USD pp
Premium Veranda	20800 USD pp
Silver	31400 USD pp
Grand 1 Bedroom	51600 USD pp
Owner 1 Bedroom	65900 USD pp

24-Oct-2026 to 01-Nov-2026

Classic Veranda	16800 USD pp
Superior Veranda	17600 USD pp
Deluxe Veranda	17900 USD pp
Premium Veranda	18200 USD pp
Silver	31400 USD pp
Grand 1 Bedroom	51600 USD pp
Owner 1 Bedroom	65900 USD pp

17-Nov-2026 to 25-Nov-2026

Classic Veranda	19200 USD pp
Superior Veranda	20100 USD pp
Deluxe Veranda	20500 USD pp
Premium Veranda	20800 USD pp
Silver	31400 USD pp
Grand 1 Bedroom	51600 USD pp
Owner 1 Bedroom	65900 USD pp

30-Oct-2026 to 07-Nov-2026

Classic Veranda	19200 USD pp
Superior Veranda	20100 USD pp
Deluxe Veranda	20500 USD pp
Premium Veranda	20800 USD pp
Silver	31400 USD pp
Grand 1 Bedroom	51600 USD pp
Owner 1 Bedroom	65900 USD pp

Wild Earth Travel

Small Ships, Big Adventures

wildearth-travel.com

info@wildearth-travel.com

PRICING

23-Nov-2026 to 01-Dec-2026

Classic Veranda	21600 USD pp
Superior Veranda	22600 USD pp
Deluxe Veranda	23100 USD pp
Premium Veranda	23400 USD pp
Silver	31400 USD pp
Grand 1 Bedroom	51600 USD pp
Owner 1 Bedroom	65900 USD pp

11-Dec-2026 to 19-Dec-2026

Classic Veranda	41200 AUD pp
Superior Veranda	41700 AUD pp
Deluxe Veranda	42200 AUD pp
Premium Veranda	42700 AUD pp
Silver	48100 AUD pp
Grand 1 Bedroom	72800 AUD pp
Owner 1 Bedroom	90300 AUD pp

29-Nov-2026 to 07-Dec-2026

Classic Veranda	21600 USD pp
Superior Veranda	22600 USD pp
Deluxe Veranda	23100 USD pp
Premium Veranda	23400 USD pp
Silver	31400 USD pp
Grand 1 Bedroom	51600 USD pp
Owner 1 Bedroom	65900 USD pp

18-Dec-2026 to 26-Dec-2026

Classic Veranda	30300 USD pp
Superior Veranda	31300 USD pp
Deluxe Veranda	32300 USD pp
Premium Veranda	32700 USD pp
Silver	45700 USD pp
Grand 1 Bedroom	71000 USD pp
Owner 1 Bedroom	84500 USD pp

06-Dec-2026 to 14-Dec-2026

Classic Veranda	21600 USD pp
Superior Veranda	22600 USD pp
Deluxe Veranda	23100 USD pp
Premium Veranda	23400 USD pp
Silver	31400 USD pp
Grand 1 Bedroom	51600 USD pp
Owner 1 Bedroom	65900 USD pp

Wild Earth Travel

Small Ships, Big Adventures

wildearth-travel.com

info@wildearth-travel.com

PRICING

04-Jan-2027 to 12-Jan-2027

Classic Veranda	39900 AUD pp
Superior Veranda	41600 AUD pp
Deluxe Veranda	42500 AUD pp
Premium Veranda	43100 AUD pp
Silver	45500 AUD pp
Grand 1 Bedroom	72700 AUD pp
Owner 1 Bedroom	92000 AUD pp

10-Jan-2027 to 18-Jan-2027

Classic Veranda	39900 AUD pp
Superior Veranda	41600 AUD pp
Deluxe Veranda	42500 AUD pp
Premium Veranda	43100 AUD pp
Silver	45500 AUD pp
Grand 1 Bedroom	72700 AUD pp
Owner 1 Bedroom	92000 AUD pp

16-Jan-2027 to 24-Jan-2027

Classic Veranda	27400 USD pp
Superior Veranda	28900 USD pp
Deluxe Veranda	29600 USD pp
Premium Veranda	30000 USD pp
Silver	33100 USD pp
Grand 1 Bedroom	43100 USD pp
Owner 1 Bedroom	47000 USD pp

22-Jan-2027 to 30-Jan-2027

Classic Veranda	27400 USD pp
Superior Veranda	28900 USD pp
Deluxe Veranda	29600 USD pp
Premium Veranda	30000 USD pp
Silver	33100 USD pp
Grand 1 Bedroom	43100 USD pp
Owner 1 Bedroom	47000 USD pp

03-Feb-2027 to 11-Feb-2027

Classic Veranda	27400 USD pp
Superior Veranda	28900 USD pp
Deluxe Veranda	29600 USD pp
Premium Veranda	30000 USD pp
Silver	33100 USD pp
Grand 1 Bedroom	43100 USD pp
Owner 1 Bedroom	47000 USD pp



Wild Earth Travel

Small Ships, Big Adventures

wildearth-travel.com

info@wildearth-travel.com

PRICING

09-Feb-2027 to 17-Feb-2027

Classic Veranda	27400 USD pp
Superior Veranda	28900 USD pp
Deluxe Veranda	29600 USD pp
Premium Veranda	30000 USD pp
Silver	33100 USD pp
Grand 1 Bedroom	43100 USD pp
Owner 1 Bedroom	47000 USD pp

15-Feb-2027 to 23-Feb-2027

Classic Veranda	24200 USD pp
Superior Veranda	25900 USD pp
Deluxe Veranda	26600 USD pp
Premium Veranda	27000 USD pp
Silver	33100 USD pp
Grand 1 Bedroom	43100 USD pp
Owner 1 Bedroom	47000 USD pp

21-Feb-2027 to 01-Mar-2027

Classic Veranda	24700 USD pp
Superior Veranda	25900 USD pp
Deluxe Veranda	26600 USD pp
Premium Veranda	27000 USD pp
Silver	33100 USD pp
Grand 1 Bedroom	43100 USD pp
Owner 1 Bedroom	47000 USD pp

Wild Earth Travel
Small Ships, Big Adventures

0800 945 3327 (within New Zealand) | +64 (0) 3 365 1355 | **1800 107 715** (within Australia)

info@wildearth-travel.com | wildearth-travel.com