

Wild Earth Travel

Small Ships, Big Adventures

wildearth-travel.com

info@wildearth-travel.com

21 DAYS LUXURY PATAGONIA & ANTARCTICA CRUISE - VALPARAISO TO PUERTO WILLIAMS

The spirit of exploration is alive and well. Begin in colorful Valparaiso, sailing south through fjords, glaciers, and narrows. Explore Patagonia before crossing the Drake Passage -- a true rite of passage -- to the Antarctic Peninsula. Few sights compare to Antarctica emerging into view, with towering icebergs and swirling birdlife. Spend five days immersed in Antarctica's wilderness and wildlife, concluding with an overnight in the world's southernmost town.

Some departures may have slightly modified itineraries. Please confirm the itinerary with an Expedition Specialist.



ITINERARY

Day 1 - Valparaiso, Chile

Since time immemorial Valparaiso has inspired writers, poets, musicians, and artists alike. If the city is still a little rough around the edges, this only adds to its bohemian ambience; the architecture, style, street art, nightlife, and live music scenes of Valparaiso are some of the best in the world. Add colorful cliff-top homes to the mix and you'll soon see why Valparaiso is many people's

Wild Earth Travel

Small Ships, Big Adventures

0800 945 3327 (within New Zealand) | +64 (0) 3 365 1355 | **1800 107 715** (within Australia)

info@wildearth-travel.com | **wildearth-travel.com**

Wild Earth Travel

Small Ships, Big Adventures

wildearth-travel.com

info@wildearth-travel.com

favorite Chilean city. The city was founded in 1536 by Spanish conquistador Juan de Saavedra, who named the city after his birthplace. Many of the colonial buildings he implemented are still standing today, despite the rain, wind, fire, and several earthquakes (one of which almost leveled the city in 1906). Quirky architecture also abounds; poetry lovers and amateur architects will no doubt want to make the 45 km trip south to Chilean poet laureate (and Nobel Prize winner) Pablo Neruda's ship-shaped house and museum for a taste of the extraordinary. The city and region are also extremely well known for their love of good food and wine. The vineyards of the nearby Casablanca Valley - first planted in the early 1980s - have earned worldwide recognition in a relatively short space of time. However, Chile's viticulture history does date back much farther than that. De Saavedra brought grape vines on his voyage to South America in order to make his own wine and this led to a new grape brandy being created, Pisco. Today give any Chilean a Pisco and wherever they are in the world, they will be home.

Day 2 - Day at sea

Days at sea are the perfect opportunity to relax, unwind, and catch up with what you've been meaning to do. So whether that is going to the gym, visiting the spa, whale-watching, catching up on your reading, or simply topping up your tan, these blue sea days are the perfect balance to busy days spent exploring shoreside.

Day 3 - Puerto Montt, Chile

For most of its history, windy Puerto Montt was the end of the line for just about everyone traveling in the Lake District. Now the Carretera Austral carries on southward, but for all intents and purposes Puerto Montt remains the region's last significant outpost, a provincial city that is the hub of local fishing, textile, and tourist activity. Today the city center is full of malls, condos, and office towers - it's the fastest-growing city in Chile - but away from downtown, Puerto Montt consists mainly of low clapboard houses perched above its bay, the Reloncavi. If it's a sunny day, head east to Playa Pelluco or one of the city's other beaches. If you're more interested in exploring the countryside, drive along the shore for a good view of the surrounding hills.

Day 4 - Puerto Cisnes, Chile

Seek out the peaceful isolation of Puerto Cisnes, surrounded by the vast

drama of Chile's national parks and snow-capped mountain peaks. Puerto Cisnes sits on the eastern shore of the Puyuhuapi fjord, just across from the beautiful National Park Isla Magdalena. Explore the park, which is dominated by Mont Melimoyu, a dormant volcano, defined by a striking caldera that is perpetually capped with ice. Meet the rangers and hike through the beautiful reserve of protected ecosystems and landscapes, discovering rich wildlife such as penguins, cormorants, sea lions, and southern river otters. Named after the black necked swans of the region, Puerto Cisnes is part of the Aysen Province of spectacular Chilean Patagonia. A relatively new town of just 3,000 residents, it was incorporated in 1965, and is the largest in a region that is dotted only with isolated and peaceful fishing communities where the traditions of Patagonian Andes life endure. Puerto Cisnes celebrates its heritage with a mouthwatering fried fish festival. Visitors to the town can also pick up local crafts like unique wallets, purses and handbags, carefully created from the local speciality of dried fish leather. The thrilling beauty of Queulat National Park is also close by, with sharp mountain landscapes, suspended ice fields, waterfalls, and extraordinary wildlife, including pumas, Andean foxes, and black woodpeckers. Birdwatching hikes can reveal Magellanic woodpeckers, Chiloe wigeons, and ringed kingfishers.

Day 5 - Cruise Chilean Fjords, Chile

Winding through the vast expanses of the Chilean Fjords will reveal mountains looming on both sides, waterfalls, and the marvel of hardy flora clinging to barren rocks. Seals and dolphins patrol the length of these uninhabited fjords as they have done for millennia. Small fishing-boats come out of Punta Arenas luring fish and trapping for king crab, while terns dip and glide coaxing their own small fish out of the deep, dark fjord waters amongst tiny islands thick with vegetation.

Day 6 - Tortel, Chile

Tortel is a commune located in Southern Patagonia, a spectacular wilderness region of rugged mountains, glaciers, rivers, and forests of infinite beauty. The uneven geography of Tortel shapes a unique landscape, characterized by an archipelagic area with numerous islands and channels. Tortel is known as the "footbridge city" for the unique beauty of its wooden walkways that connect the piers and houses of this quaint place through bridges and stairs, built from cypress wood, that run for four and a half miles around the cove and that respect the rich vegetation that grows under them. Even though it is the sixth largest commune in Chile, it has the lowest population of all with roughly 531 people. The history of the town dates back to 1520 when it was inhabited by

Wild Earth Travel

Small Ships, Big Adventures

0800 945 3327 (within New Zealand) | +64 (0) 3 365 1355 | **1800 107 715** (within Australia)

info@wildearth-travel.com | **wildearth-travel.com**

Wild Earth Travel

Small Ships, Big Adventures

wildearth-travel.com

info@wildearth-travel.com

nomadic Kawesqar, now extinct. Its definitive foundation was in 1955, after numerous attempts to populate the area. In 2001, it was declared by the Chilean government as a Picturesque Zone of National Heritage.

Day 7 - Cruise English Narrows, Chile

English Narrows refers to a narrow passage at the southern end of the Messier Channel in Chile's Region XI, Aysen del General Carlos Ibanez del Campos. The region is Chile's least populated and a few kilometers south of English Narrows is Puerto Eden, the only settlement along the entire Chilean Inside Passage. With Wellington Island to the west and surrounded by Chile's largest national park, Bernardo O'Higgins National Park, the narrow passage is at times 180 meters wide, while the entire length is given as 18 kilometers. Low-lying islands and steep mountains are seen on both sides and the Magellanic subpolar forest with its evergreen trees of the genus *Nothofagus* has taken hold where possible. The strong currents require to pass English Narrows at slack tide and although most of the Messier Channel leading to English Narrows is quite deep, a shipwreck sitting on a bank some 20 kilometers north of the entrance to English Narrows shows why pilots are required by law in Chile.

Day 8 - Cruising Pio XI Glacier, Chile & Cruise Chilean Fjords, Chile

Within Bernardo O'Higgins National Park the Pio XI Glacier (also known as Bruggen Glacier after the German geologist Johannes Bruggen) is found at the terminus of the 23 nautical miles long Eyre Fjord, one of the fjords coming from the northeast and the Southern Patagonian Ice Field. The fjord and its shores were formerly used by the nomadic Kawesqar to hunt, while the glacier was one of their sacred sites. Pio XI Glacier is the largest western outflow of the Southern Patagonian Ice Field and is South America's longest glacier and the largest in the Southern Hemisphere outside of Antarctica. One of the few advancing glaciers, its front has a width of 4.5 kilometers, a height of approximately 80 meters and shows several central moraines, indicating that Greve Glacier and Occidental Glacier to the north once joined the glacial tongue. Approaching the glacier by ship and by Zodiac safe distances will be maintained, as the glacier shows extensive mudflats on its southeastern side leading to Exmouth Fjord and calvings can always occur. The rocky shore shows signs of *Nothofagus* trees and the temperate Magellanic rain forest where the extremely rare and endangered South Andean deer, locally known as the huemul, has been sighted. Chilean and Peale's dolphins and the

endangered southern river otters have been recorded, and South American sea lions can be seen. Among the birds expected are Imperial Shags, South American Terns, Brown-hooded Gulls, Kelp Gulls, Kelp Geese, and Fuegian Steamer Ducks.

Winding through the vast expanses of the Chilean Fjords will reveal mountains looming on both sides, waterfalls, and the marvel of hardy flora clinging to barren rocks. Seals and dolphins patrol the length of these uninhabited fjords as they have done for millennia. Small fishing-boats come out of Punta Arenas luring fish and trapping for king crab, while terns dip and glide coaxing their own small fish out of the deep, dark fjord waters amongst tiny islands thick with vegetation.

Day 9 - Aguilera Glacier, Chile

Day 10 - Punta Arenas, Chile

Welcome to Chile's City at the End of The World - a wind-whipped, fractured land of islands, glacial fjords, and mountains, which drop away towards Antarctica. A hardy city, where the temperature hovers in single figures throughout much of the year, Punta Arenas nevertheless offers a warm welcome and refuge, ahead of - and following - epic adventures and expeditions south across the Drake Passage. Captain Scott stopped here in 1904 - testing the postal service by sending 400 letters of his successful return - and the city welcomed the rescued Ernest Shackleton and his Endurance crew to these shores in 1916. Punta Arenas is a remote place, but with custom-free status, and more than 120,000 people calling it home it's also surprisingly cosmopolitan. The commercial center of Magallanes Punta Arenas is fueled by Chilean oil and gas - and establishing itself as a global center for Antarctic research, with teams from various countries basing themselves here. The town is built around the Plaza de Armas, its central square - be sure to kiss the toe of the Monumento del Indio Patagon statue, said to guarantee you good luck on your return. Look down across this colorful city, stretching out to meet the waters of the Straits of Magellan, from the viewpoint at Cerro De La Cruz. Natural wonders abound in the region, whether it's Alberto de Agostini National Park's glacial sculptures, or Torres del Paine National Park's soaring mountains, rushing waterfalls, and picturesque lakes. Offshore, in the Strait of Magellan, you can find the birdlife sanctuary of Magdalena Island - an uninhabited island, where hundreds of thousands of penguins march and crowds of cormorants and gulls call out.

Wild Earth Travel

Small Ships, Big Adventures

0800 945 3327 (within New Zealand) | +64 (0) 3 365 1355 | **1800 107 715** (within Australia)

info@wildearth-travel.com | **wildearth-travel.com**

Wild Earth Travel

Small Ships, Big Adventures

wildearth-travel.com

info@wildearth-travel.com

Day 11 - Ushuaia, Argentina

A southerly frontier - on the cusp of wild nature and extraordinary adventures - the excitement in Ushuaia is palpable. Prepare for memorable exploits amid the extremes of this southerly location - as you adventure into the colossal scenery of the fractured Tierra del Fuego and beyond. Known as the "End of the World" Ushuaia looks out across the Beagle Channel and is surrounded by the Martial Mountains to the north. Despite its remote location, Ushuaia is a surprisingly busy and lively resort, with lots to keep its visitors entertained. For many people, Ushuaia is their last glimpse of anything resembling a city, before they jump off the map into the wilderness, to answer the call of immense national parks or Antarctic expeditions. One of the most dramatic landscapes on the planet - Argentina's land of fire, National Park Tierra del Fuego, is a place of titanic natural forces and limitless beauty. Snow-covered mountains poke the sky, while glaciers spill down between peaks, and gaping fjords open up. With incredible wildlife - from penguins to whales - the park offers some of South America's most amazing hiking opportunities and panoramas. When it comes to food in Ushuaia, locals cook up fierce flavors using the freshest ingredients. King crab is one of the most popular dishes, while sea bass - hauled freshly from the waters - and mounds of meaty mussels - known as cholgas - are also on the menu here.

Days 12 - 13 - Drake Passage

Sailing the legendary Drake Passage is an experience that few are ever lucky enough to experience. The southern tip of the Americas already feels like a wild enough environment - but the sensation of watching the distant cliffs of the peninsular known as the "End of the World" fade into the horizon, is one that's equal parts epic, eerie, and magical. Set sail, to slowly drop off the bottom of the map from Cape Horn, and voyage on an expedition down into the icy underworld of Antarctica. Drake Passage is an extraordinary voyage of romantic ocean-faring legend, as you aim for Antarctica's icy realm. On arrival, skyscraper-sized icebergs salute you, as you traverse the waters of this continent where snow and ice-dwelling creatures like penguins and whales roam undisturbed. Your first sight of this most unexplored place will most likely be the South Shetland Islands. Walk in the footsteps of some of history's greatest and bravest explorers as you explore famed, snow-covered landmasses like Elephant and Deception Island. If the journey across Drake Passage sounds daunting, don't worry - even in rough seas you're never alone, and will often be accompanied on this spine-tingling adventure by soaring albatrosses and maybe even a protective pod of humpbacks and hourglass dolphins or two. Converging warm and cool ocean currents attract some

spectacular animal life to the passage.

Day 14 - Antarctic Sound, Antarctica

Few voyages ignite the imagination like a journey down to one of the planet's most remote, extreme, and enchanting wilderness, Antarctica. An adventure in its purest form, only a handful of people will ever be lucky enough to experience the majestic beauty of these monochrome landscapes first-hand. The Antarctic Sound will be one of your first encounters with this whitewash kingdom, located at the northerly tip of the Antarctic Peninsula - which sprawls up like a tentacle towards Tierra del Fuego, South America's most southerly point, otherwise known as the "End of the World". Taking its name from the first ship to brave the passageway between the peninsular and the Joinville Island groups back in 1902, the Sound is a raw, sensory assault of imposing iceberg slabs, broken away from the disintegrating Larsen Ice Shelf. Come face-to-face with arena-sized islands of ice and meet the extraordinary birdlife that calls this whitewash kingdom home. Watch on, as colonies of Gentoo penguins hop around, and cape petrels sweep overhead, as the continent's unique wildlife thrives around you. If you're planning your first venture into Antarctica, you'll want to brush up on your photography skills in advance, to capture this unforgetting continent in all of its unrestrained glory.

Days 15 - 17 - Antarctic Peninsula

The Antarctic Peninsula unravels upwards towards South America, reaching out a beckoning finger to the adventurous, who dare to explore this untamed realm. Stretching up from the heart of the world's southernmost continent, the Antarctic Peninsula lies a mere 620 miles from Tierra del Fuego and, for many, offers a spectacular first taste of the snow-blanketed landscapes and colossal ice sculptures, which make up Earth's least-explored continent. Unseen by humans until 1820 - a blink of an eye ago in relative terms - this is an adventure sure to make your hairs stand on end, as you experience the thrill of the truly unknown and extraordinary. The vast peninsula is sprinkled with research bases, which are at the frontline of human scientific endeavor, pushing to study and understand this unique landscape, its exceptional wildlife, and the impact that humans are having on this pristine continent. Witness cathedral-sized icebergs up close, and blue-hued glaciers, slowly slipping from imposing locations like Hope Bay. Blanched mountain peaks cover the peninsula, and you'll find thousands of adorable Adeline penguin pairs thriving undisturbed in this peninsula's unique setting.

Wild Earth Travel

Small Ships, Big Adventures

0800 945 3327 (within New Zealand) | +64 (0) 3 365 1355 | **1800 107 715** (within Australia)

info@wildearth-travel.com | **wildearth-travel.com**

Wild Earth Travel

Small Ships, Big Adventures

wildearth-travel.com

info@wildearth-travel.com

Day 18 - South Shetland Islands, South Shetland Islands, Antarctica

The ice-coated Antarctic Peninsula forms perhaps the most accessible region of mainland Antarctica, lying a mere 480 miles away from South America, across the fabled waters of Drake's Passage. Lying close to the northwestern tip of the Antarctic Peninsula, separated by the Bransfield Strait, the South Shetland Islands fall under the jurisdiction of the Antarctic Treaty, suspending claims on their sovereignty. Several countries maintain research bases here, and with plump elephant seals, and crowds of Gentoo, Chinstrap, and Adelie Penguins also calling the islands home, it can even feel a little crowded at times. King George Island is the largest and most hospitable island, hosting the majority of the research stations - some of which are populated all year round by tiny, hardy crews. Don't be fooled though, these islands offer extraordinary adventure in one of the most remote locations on Earth. The triple peaks of Mount Foster tower above the archipelago, and you'll feel your heart pumping a little quicker, as you sail into the core of Deception Island's magnificent collapsed volcano caldera. Hike the lunar landscapes within, and even dip into the improbably warm, geothermally heated waters of Pendulum Cove. Elephant Island, meanwhile, is written deep into the annals of Antarctic expedition legend, as the site where Ernest Shackleton and the stricken crew of the *Endurance* miraculously survived a harsh Antarctic winter, in 1916.

Day 19 - Drake Passage

Sailing the legendary Drake Passage is an experience that few are ever lucky enough to experience. The southern tip of the Americas already feels like a wild enough environment - but the sensation of watching the distant cliffs of the peninsula known as the "End of the World" fade into the horizon, is one that's equal parts epic, eerie, and magical. Set sail, to slowly drop off the bottom of the map from Cape Horn, and voyage on an expedition down into the icy underworld of Antarctica. Drake Passage is an extraordinary voyage of romantic ocean-faring legend, as you aim for Antarctica's icy realm. On arrival, skyscraper-sized icebergs salute you, as you traverse the waters of this continent where snow and ice-dwelling creatures like penguins and whales roam undisturbed. Your first sight of this most unexplored place will most likely be the South Shetland Islands. Walk in the footsteps of some of history's greatest and bravest explorers as you explore famed, snow-covered landmasses like Elephant and Deception Island. If the journey across Drake Passage sounds daunting, don't worry - even in rough seas you're never alone, and will often be accompanied on this spine-tingling adventure by soaring

albatrosses and maybe even a protective pod of humpbacks and hourglass dolphins or two. Converging warm and cool ocean currents attract some spectacular animal life to the passage.

Days 20 - 21 - Puerto Williams, Chile

Puerto Williams is a Chilean city located on Navarino Island on the southern shores of the Beagle Channel. It claims to be the "southernmost city in the world", however owing to its small size - 2,500 residents approximately - the much larger Argentinean city of Ushuaia, which sits on the northern side of the same channel, also claims that title. The surrounding scenery is magnificent. The wild windswept mountains rise above the tree line and are regularly dusted with snow. The city itself has the dramatic backdrop called "Dientes de Navarino" (literally "teeth of Navarino"), which rivals the famous Torres del Paine further to the north. The area was originally used by the Yaghan people, hunter-gatherers who despite enduring the harsh regional climate, could not weather the arrival of Europeans. The current city was established as a naval base in 1953 and honors the British-Chilean naval commander John Williams Wilson of the 19th century. Initially it served to protect territorial possessions and fishing rights of the area, as well as offering logistical support to Antarctic bases. More recently it has become a departure point for scientific and tourism trips to the Antarctic region. In contrast to the bustle and traffic of a very commercial Ushuaia, Puerto Williams offers a quieter, more relaxed experience. It charms the visitor with a small village feel, complete with rustic buildings and the homely smell of drifting wood smoke. A haven of peace at the end of the world.

Please note:

Itineraries are subject to change.

Wild Earth Travel

Small Ships, Big Adventures

0800 945 3327 (within New Zealand) | +64 (0) 3 365 1355 | **1800 107 715** (within Australia)

info@wildearth-travel.com | **wildearth-travel.com**

Wild Earth Travel

Small Ships, Big Adventures

wildearth-travel.com

info@wildearth-travel.com

YOUR SHIP: SILVER CLOUD

YOUR SHIP:	Silver Cloud
VESSEL TYPE:	Luxury Expedition
LENGTH:	157 m
PASSENGER CAPACITY:	200/260
BUILT/REFURBISHED:	1994 Refurbished & Rebranded

Silver Cloud delivers one of the most personalised expedition experiences at sea, blending ultra-luxury with true adventure. As Silversea's first crossover ship, she's built for both comfort and exploration, offering large ocean-facing suites--80% with verandas--and an impressive 1:1 crew-to-guest ratio. With 20 Zodiacs and 10 kayaks, guests enjoy unparalleled access to remote locations, while expert-led excursions ensure meaningful encounters with nature and culture alike. From the icy reaches of Antarctica to the sun-kissed South Pacific, Silver Cloud brings the remarkable within easy reach.

On board, refined living continues with four elegant dining venues, including French fine dining at La Dame and authentic Italian at La Terrazza. Relax in stylish public areas such as the Panorama Lounge or Connoisseur's Corner, indulge in world-class spa treatments, or learn more about your destinations from passionate experts in the Explorer Lounge. Whether you're cruising the Kimberley or the Chilean fjords, Silver Cloud offers a sophisticated base for discovering the far corners of the world in sublime comfort.



Wild Earth Travel

Small Ships, Big Adventures

0800 945 3327 (within New Zealand) | +64 (0) 3 365 1355 | **1800 107 715** (within Australia)

info@wildearth-travel.com | wildearth-travel.com

Wild Earth Travel

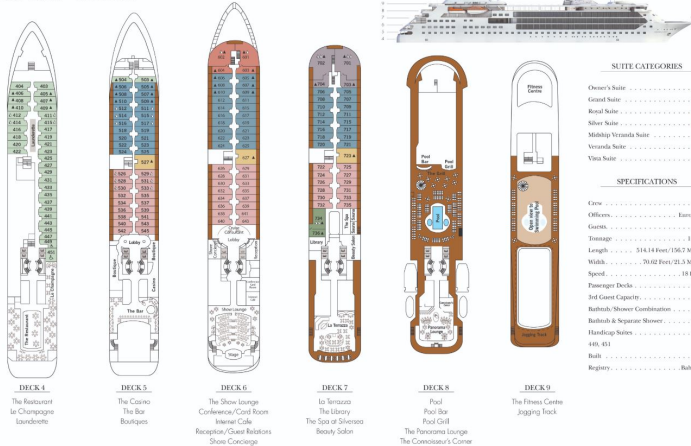
Small Ships, Big Adventures

wildearth-travel.com

info@wildearth-travel.com

INSIDE YOUR SHIP

Silver Cloud - DECK PLAN



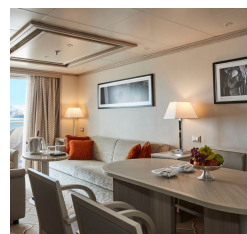
Grand 1 Bedroom



Grand 2 Bedroom



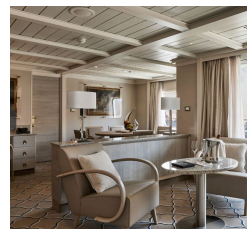
Medallion



Midship Veranda



Owner 1 Bedroom



Owner 2 Bedroom



Wild Earth Travel

Small Ships, Big Adventures

0800 945 3327 (within New Zealand) | +64 (0) 3 365 1355 | 1800 107 715 (within Australia)

info@wildearth-travel.com | wildearth-travel.com



Wild Earth Travel

Small Ships, Big Adventures



wildearth-travel.com

info@wildearth-travel.com

PRICING

15-Nov-2027 to 05-Dec-2027

Vista	41500 AUD pp
Veranda	48200 AUD pp
Midship Veranda	51500 AUD pp
Medallion	55700 AUD pp
Silver	57200 AUD pp
Royal 1 Bedroom	61800 AUD pp
Grand 1 Bedroom	68000 AUD pp
Owner 1 Bedroom	74200 AUD pp
Royal 2 Bedroom	105200 AUD pp
Grand 2 Bedroom	111400 AUD pp
Owner 2 Bedroom	111600 AUD pp

28-Feb-2028 to 21-Mar-2028

Vista	36200 AUD pp
Veranda	43100 AUD pp
Midship Veranda	46900 AUD pp
Medallion	56900 AUD pp
Silver	58800 AUD pp
Royal 1 Bedroom	64600 AUD pp
Grand 1 Bedroom	72200 AUD pp
Owner 1 Bedroom	79800 AUD pp
Royal 2 Bedroom	103400 AUD pp
Grand 2 Bedroom	111000 AUD pp
Owner 2 Bedroom	112400 AUD pp



Wild Earth Travel

Small Ships, Big Adventures

0800 945 3327 (within New Zealand) | +64 (0) 3 365 1355 | **1800 107 715** (within Australia)

info@wildearth-travel.com | wildearth-travel.com