

# Wild Earth Travel

*Small Ships, Big Adventures*

**wildearth-travel.com**

**info@wildearth-travel.com**

## 17 DAYS LUXURY ANTARCTICA EXPEDITION - PUERTO WILLIAMS TO PUERTO WILLIAMS

Spend Christmas exploring the Antarctic wilderness. Bookended by Puerto Williams, you'll start with three days at sea. South Georgia promises snow-covered mountains, giant glaciers and a variety of rare wildlife such as King Penguins. Navigate thrilling Drake Passage and cruise Elephant Island for more remote discovery. The Antarctic Peninsula is an icy paradise with towering glaciers and icebergs, while the Shetland Islands is home to penguins and seals.

\_Some departures may have slightly modified itineraries. Please confirm the itinerary with an Expedition Specialist.\_



### ITINERARY

#### Days 0 - 1 - Pre Cruise & Puerto Williams

\_ \*\*Pre Cruise Benefits\*\* \_

\_ \*\*Hotel\*\* \_

\_ \*\*Charter flights\*\* \_

Puerto Williams is a Chilean city located on Navarino Island on the southern

Wild Earth Travel

*Small Ships, Big Adventures*

**0800 945 3327** (within New Zealand) | +64 (0) 3 365 1355 | **1800 107 715** (within Australia)

info@wildearth-travel.com | **wildearth-travel.com**

# Wild Earth Travel

*Small Ships, Big Adventures*

**wildearth-travel.com**

**info@wildearth-travel.com**

shores of the Beagle Channel. It claims to be the "southernmost city in the world", however owing to its small size - 2500 residents approximately - the much larger Argentinean city of Ushuaia, which sits on the northern side of the same channel, also claims that title. The surrounding scenery is magnificent. The wild windswept mountains rise above the tree line and are regularly dusted with snow. The city itself has the dramatic backdrop called "Dientes de Navarino" (literally "teeth of Navarino"), which rival the famous Torres del Paine further to the north. The area was originally used by the Yaghan people, hunter-gatherers who despite enduring the harsh regional climate, could not weather the arrival of Europeans. The current city was established as a naval base in 1953 and honours the British-Chilean naval commander John Williams Wilson of the 16th century. Initially it served to protect territorial possessions and fishing rights of the area, as well as offering logistical support to Antarctic bases. More recently it has become a departure point for scientific and tourism trips to the Antarctic region. In contrast to the bustle and traffic of a very commercial Ushuaia, Puerto Williams offers a quieter, more relaxed experience. It charms the visitor with a small village feel, complete with rustic buildings and the homely smell of drifting wood smoke. A haven of peace at the end of the world.

## Days 2 - 4 - Day at sea

Days at sea are the perfect opportunity to relax, unwind and catch up with what you've been meaning to do. So whether that is going to the gym, visiting the spa, whale watching, catching up on your reading or simply topping up your tan, these blue sea days are the perfect balance to busy days spent exploring shore side.

## Days 5 - 7 - South Georgia

Charcoal-black mountains ladled with snow, giant glaciers and thriving wildlife combine to make South Georgia one of the great natural islands. Adventure to these far flung lands - where the animals are in charge and humans come a distant second. Here you'll witness a cacophony of calling birds, natural set pieces like elephant seals clashing and thrashing, and crowds of colourful king penguins stretching out as far as the eye can see. An overseas territory of the UK, these isolated, subantarctic islands once formed a remote whaling centre - and you can still visit the former whaling stations. Nowadays the giants of the sea are free to cruise the icy waters uninhibited. Written into explorer history due to its links with Ernest Shackleton's tale of Antarctic exploration, shipwreck and survival, the Endurance's crew were saved when he reached the salvation of these shores in 1916 - before returning to collect the remaining sailors from

Elephant Island. A museum commemorates the legendary mission, and you can see the memorial to Shackleton that stands over his final resting place on this fabled island. South Georgia's colonies of king penguins - with vivid bursts of yellow and orange around their necks - stand, squabble and curiously investigate, enjoying the isolated respite of this island. They're joined by smaller penguin species like Macaroni penguins, and other glorious birdlife like the majestic wandering albatrosses, which you can see gliding on gusts of wind, over the choppy waves.

## Days 8 - 9 - Drake Passage

Sailing the legendary Drake Passage is an experience that few are ever lucky enough to experience. The southern tip of the Americas already feels like a wild enough environment - but the sensation of watching the distant cliffs of the peninsular known as the 'End of the World' fade into the horizon, is one that's equal parts epic, eerie and magical. Set sail, to slowly drop off the bottom of the map from Cape Horn, and voyage on an expedition down into the icy underworld of Antarctica. Drake Passage is an extraordinary voyage of romantic ocean faring legend, as you aim for Antarctica's icy realm. On arrival, skyscraper sized icebergs salute you, as you traverse the waters of this continent where snow and ice dwelling creatures like penguins and whales roam undisturbed. Your first sight of this most-unexplored place will most likely be the South Shetland Islands. Walk in the footsteps of some of history's greatest and bravest explorers as you explore famed, snow-covered landmasses like Elephant and Deception Island. If the journey across Drake Passage sounds daunting, don't worry - even in rough seas you're never alone, and will often be accompanied on this spine-tingling adventure by soaring albatrosses and maybe even a protective pod of humpbacks and hourglass dolphins or two. Converging warm and cool ocean currents attract some spectacular animal life to the passage. If this is your first visit to this magical continent, you'll also want to familiarise yourself with our blog for first timers to Antarctica.

## Day 10 - Elephant Island

Promising thrilling adventure, legendary tales and immaculate Antarctic beauty, Elephant Island is perhaps Antarctica's best-known location. The exploits of its early explorers have immortalised this harsh, monochrome island in the tomes of human history. Believed to take its name from the elephant seals that early explorers spotted lolling on its rocks, the volcanic island was not properly explored until 1916 - when Ernest Shackleton and his men were stricken by the weather and sought salvation on its shores. Their story of

Wild Earth Travel

*Small Ships, Big Adventures*

**0800 945 3327** (within New Zealand) | +64 (0) 3 365 1355 | **1800 107 715** (within Australia)

info@wildearth-travel.com | wildearth-travel.com



# Wild Earth Travel

*Small Ships, Big Adventures*

**wildearth-travel.com**

**info@wildearth-travel.com**

survival, stranded in this barren land, is one of humanity's most evocative and inspiring accounts. Elephant Island is written deep into the legend of Antarctic exploration, and you'll discover Shackleton's tale for yourself as you arrive in the island's icy realm. The remarkable, slowly flowing Endurance Glacier - which you'll see on arrival here - takes its name from their ship, The Endurance. Visit the monument that stands to Shackleton, often surrounded by a migrating crowd of tiny gentoo penguins, at Point Wild - the spot where he and his 28 crew members camped for four and a half months of Antarctic winter. Eventually, Shackleton and a handful of courageous others sailed for South Georgia Island, before returning to secure the rescue of the remaining crew members. Aside from sailing amid breathtaking winter vistas, witnessing incredible fauna and feeling the sheer rush of an adventure to the unknown - one of the true joys of any Antarctic cruise is to follow in the footsteps of the brave explorers who first sought out the alluring nectar of these dangerous, evocative landscapes. If this will be your first-time visiting Antarctica, read our blog explaining how you can prepare for the exploits ahead.

## Days 11 - 12 - Antarctic Peninsula

The Antarctic Peninsula unravels upwards towards South America, reaching out a beckoning finger to the adventurous, who dare to explore this untamed realm. Stretching up from the heart of the world's southernmost continent, the Antarctic Peninsula lies a mere 620 mile from Tierra del Fuego and, for many, offers a spectacular first taste of the snow-blanketed landscapes and colossal ice sculptures, which make up Earth's least-explored continent. Unseen by humans until 1820 - a blink of an eye ago in relative terms - this is an adventure sure to make your hairs stand on end, as you experience the thrill of the truly unknown and extraordinary. The vast peninsula is sprinkled with research bases, which are at the frontline of human scientific endeavour, pushing to study and understand this unique landscape, its exceptional wildlife, and the impact that humans are having on this pristine continent. Witness cathedral-sized icebergs up close, and blue-hued glaciers, slowly slipping from imposing locations like Hope Bay. Blanched mountain peaks cover the peninsula, and you'll find thousands of adorable Adelie penguin pairs thriving undisturbed in this peninsula's unique setting.

## Day 13 - South Shetland Islands

The ice-coated Antarctic Peninsula forms perhaps the most accessible region of mainland Antarctica, lying a mere 480-miles away from South America, across the fabled waters of Drake's Passage. Lying close to the northwestern tip of the Antarctic Peninsula, separated by the Bransfield Strait, the South

Shetland Islands fall under the jurisdiction of the Antarctic Treaty, suspending claims on their sovereignty. Several countries maintain research bases here, and with plump elephant seals, and crowds of Gentoo, Chinstrap and Adelie Penguins also calling the islands home, it can even feel a little crowded at times. King George Island is the largest and most hospitable island, hosting the majority of the research stations - some of which are populated all-year-round by tiny, hardy crews. Don't be fooled though, these islands offer extraordinary adventure in one of the most remote locations on earth. The triple peaks of Mount Foster tower above the archipelago, and you'll feel your heart pumping a little quicker, as you sail into the core of Deception Island's magnificent collapsed volcano caldera. Hike the luna landscapes within, and even dip into the improbably warm, geothermally-heated waters of Pendulum Cove. Elephant Island, meanwhile, is written deep into the annals of Antarctic expedition legend, as the site where Ernest Shackleton and the stricken crew of the Endurance miraculously survived a harsh Antarctic winter, in 1916. Discover even more reasons to visit this incredible icy kingdom and find out why many consider the South Shetland Islands to be the jewel in Antarctica's Crown, by reading our blog.

## Day 14 - Drake Passage

Sailing the legendary Drake Passage is an experience that few are ever lucky enough to experience. The southern tip of the Americas already feels like a wild enough environment - but the sensation of watching the distant cliffs of the peninsular known as the 'End of the World' fade into the horizon, is one that's equal parts epic, eerie and magical. Set sail, to slowly drop off the bottom of the map from Cape Horn, and voyage on an expedition down into the icy underworld of Antarctica. Drake Passage is an extraordinary voyage of romantic ocean faring legend, as you aim for Antarctica's icy realm. On arrival, skyscraper sized icebergs salute you, as you traverse the waters of this continent where snow and ice dwelling creatures like penguins and whales roam undisturbed. Your first sight of this most-unexplored place will most likely be the South Shetland Islands. Walk in the footsteps of some of history's greatest and bravest explorers as you explore famed, snow-covered landmasses like Elephant and Deception Island. If the journey across Drake Passage sounds daunting, don't worry - even in rough seas you're never alone, and will often be accompanied on this spine-tingling adventure by soaring albatrosses and maybe even a protective pod of humpbacks and hourglass dolphins or two. Converging warm and cool ocean currents attract some spectacular animal life to the passage. If this is your first visit to this magical continent, you'll also want to familiarise yourself with our blog for first timers to Antarctica.

Wild Earth Travel

*Small Ships, Big Adventures*

**0800 945 3327** (within New Zealand) | +64 (0) 3 365 1355 | **1800 107 715** (within Australia)

info@wildearth-travel.com | wildearth-travel.com

# Wild Earth Travel

*Small Ships, Big Adventures*

**wildearth-travel.com**

**info@wildearth-travel.com**

## Days 15 - 16 - Puerto Williams & Post Cruise

Puerto Williams is a Chilean city located on Navarino Island on the southern shores of the Beagle Channel. It claims to be the "southernmost city in the world", however owing to its small size - 2500 residents approximately - the much larger Argentinean city of Ushuaia, which sits on the northern side of the same channel, also claims that title. The surrounding scenery is magnificent. The wild windswept mountains rise above the tree line and are regularly dusted with snow. The city itself has the dramatic backdrop called "Dientes de Navarino" (literally "teeth of Navarino"), which rival the famous Torres del Paine further to the north. The area was originally used by the Yaghan people, hunter-gatherers who despite enduring the harsh regional climate, could not weather the arrival of Europeans. The current city was established as a naval base in 1953 and honours the British-Chilean naval commander John Williams Wilson of the 16th century. Initially it served to protect territorial possessions and fishing rights of the area, as well as offering logistical support to Antarctic bases. More recently it has become a departure point for scientific and tourism trips to the Antarctic region. In contrast to the bustle and traffic of a very commercial Ushuaia, Puerto Williams offers a quieter, more relaxed experience. It charms the visitor with a small village feel, complete with rustic buildings and the homely smell of drifting wood smoke. A haven of peace at the end of the world.

\_ \*\*Post Cruise Benefits\*\* \_

\_ \*\*Charter flights\*\* \_

Please note:

Itineraries are subject to change.

Wild Earth Travel  
*Small Ships, Big Adventures*

**0800 945 3327** (within New Zealand) | +64 (0) 3 365 1355 | **1800 107 715** (within Australia)

info@wildearth-travel.com | **wildearth-travel.com**

# Wild Earth Travel

*Small Ships, Big Adventures*

**wildearth-travel.com**

**info@wildearth-travel.com**

## YOUR SHIP: SILVER CLOUD

<b>YOUR SHIP:</b>	<b>Silver Cloud</b>
<b>VESSEL TYPE:</b>	<b>Luxury Expedition</b>
<b>LENGTH:</b>	<b>157 m</b>
<b>PASSENGER CAPACITY:</b>	<b>200/260</b>
<b>BUILT/REFURBISHED:</b>	<b>1994 Refurbished &amp; Rebranded</b>

Silver Cloud delivers one of the most personalised expedition experiences at sea, blending ultra-luxury with true adventure. As Silversea's first crossover ship, she's built for both comfort and exploration, offering large ocean-facing suites--80% with verandas--and an impressive 1:1 crew-to-guest ratio. With 20 Zodiacs and 10 kayaks, guests enjoy unparalleled access to remote locations, while expert-led excursions ensure meaningful encounters with nature and culture alike. From the icy reaches of Antarctica to the sun-kissed South Pacific, Silver Cloud brings the remarkable within easy reach.

On board, refined living continues with four elegant dining venues, including French fine dining at La Dame and authentic Italian at La Terrazza. Relax in stylish public areas such as the Panorama Lounge or Connoisseur's Corner, indulge in world-class spa treatments, or learn more about your destinations from passionate experts in the Explorer Lounge. Whether you're cruising the Kimberley or the Chilean fjords, Silver Cloud offers a sophisticated base for discovering the far corners of the world in sublime comfort.



Wild Earth Travel

*Small Ships, Big Adventures*

**0800 945 3327** (within New Zealand) | +64 (0) 3 365 1355 | **1800 107 715** (within Australia)

info@wildearth-travel.com | wildearth-travel.com



# Wild Earth Travel

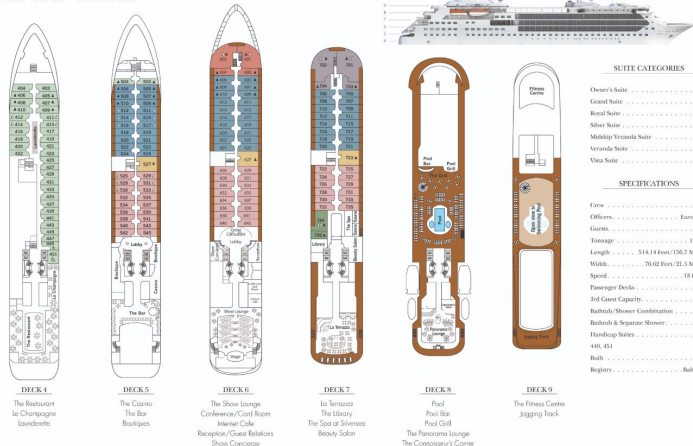
*Small Ships, Big Adventures*

[wildearth-travel.com](http://wildearth-travel.com)

[info@wildearth-travel.com](mailto:info@wildearth-travel.com)

## INSIDE YOUR SHIP

Silver Cloud - DECK PLAN



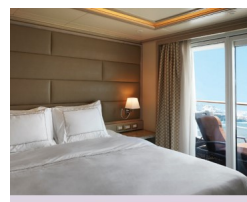
### Grand 1 Bedroom



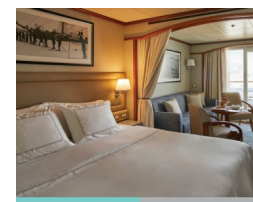
### Grand 2 Bedroom



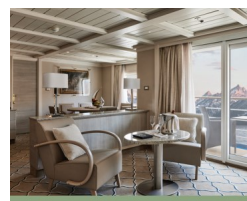
### Medallion



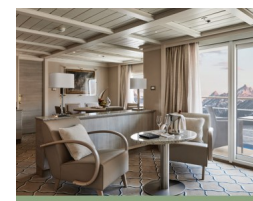
### Midship Veranda



### Owner 1 Bedroom



### Owner 2 Bedroom



Wild Earth Travel

*Small Ships, Big Adventures*

0800 945 3327 (within New Zealand) | +64 (0) 3 365 1355 | 1800 107 715 (within Australia)

[info@wildearth-travel.com](mailto:info@wildearth-travel.com) | [wildearth-travel.com](http://wildearth-travel.com)

# Wild Earth Travel

*Small Ships, Big Adventures*

[wildearth-travel.com](http://wildearth-travel.com)

[info@wildearth-travel.com](mailto:info@wildearth-travel.com)

## PRICING

### 06-Feb-2026 to 22-Feb-2026

Vista	36000 AUD pp
Medallion	59700 AUD pp
Silver	64900 AUD pp
Royal 1 Bedroom	70600 AUD pp
Grand 1 Bedroom	76900 AUD pp
Owner 1 Bedroom	83700 AUD pp
Royal 2 Bedroom	105100 AUD pp
Grand 2 Bedroom	111400 AUD pp
Owner 2 Bedroom	116100 AUD pp
Veranda	0 pp
Midship Veranda	0 pp

Vista	30000 AUD pp
Veranda	37400 AUD pp
Midship Veranda	43700 AUD pp
Medallion	47100 AUD pp
Silver	57800 AUD pp
Royal 1 Bedroom	61800 AUD pp
Grand 1 Bedroom	71400 AUD pp
Owner 1 Bedroom	92600 AUD pp
Royal 2 Bedroom	95500 AUD pp
Grand 2 Bedroom	105100 AUD pp
Owner 2 Bedroom	119600 AUD pp

### 19-Oct-2026 to 04-Nov-2026

Vista	34300 AUD pp
Medallion	47100 AUD pp
Silver	59600 AUD pp
Royal 1 Bedroom	63000 AUD pp
Grand 1 Bedroom	71600 AUD pp
Owner 1 Bedroom	90400 AUD pp
Royal 2 Bedroom	114800 AUD pp
Grand 2 Bedroom	120500 AUD pp
Owner 2 Bedroom	125800 AUD pp
Midship Veranda	0 pp
Veranda	0 pp

### 08-Nov-2026 to 24-Nov-2026

Wild Earth Travel  
*Small Ships, Big Adventures*

0800 945 3327 (within New Zealand) | +64 (0) 3 365 1355 | 1800 107 715 (within Australia)

[info@wildearth-travel.com](mailto:info@wildearth-travel.com) | [wildearth-travel.com](http://wildearth-travel.com)

# Wild Earth Travel

*Small Ships, Big Adventures*

**wildearth-travel.com**

**info@wildearth-travel.com**

## PRICING

### 23-Nov-2026 to 09-Dec-2026

Vista	31500 AUD pp
Veranda	39200 AUD pp
Midship Veranda	45800 AUD pp
Medallion	47500 AUD pp
Silver	57800 AUD pp
Royal 1 Bedroom	61800 AUD pp
Grand 1 Bedroom	71400 AUD pp
Owner 1 Bedroom	92600 AUD pp
Royal 2 Bedroom	97100 AUD pp
Grand 2 Bedroom	106700 AUD pp
Owner 2 Bedroom	121000 AUD pp

Vista	31200 AUD pp
Veranda	37400 AUD pp
Midship Veranda	43500 AUD pp
Medallion	51800 AUD pp
Silver	61200 AUD pp
Royal 1 Bedroom	64900 AUD pp
Grand 1 Bedroom	73500 AUD pp
Owner 1 Bedroom	92600 AUD pp
Royal 2 Bedroom	98600 AUD pp
Grand 2 Bedroom	107200 AUD pp
Owner 2 Bedroom	120700 AUD pp

### 21-Dec-2026 to 06-Jan-2027

Vista	33400 AUD pp
Medallion	50300 AUD pp
Silver	55100 AUD pp
Royal 1 Bedroom	58900 AUD pp
Grand 1 Bedroom	68300 AUD pp
Owner 1 Bedroom	88900 AUD pp
Royal 2 Bedroom	95100 AUD pp
Grand 2 Bedroom	104500 AUD pp
Owner 2 Bedroom	119000 AUD pp
Midship Veranda	0 pp
Veranda	0 pp

### 17-Jan-2027 to 02-Feb-2027



# Wild Earth Travel

*Small Ships, Big Adventures*

**wildearth-travel.com**

**info@wildearth-travel.com**

## PRICING

### 11-Feb-2027 to 27-Feb-2027

Vista	32200 AUD pp
Veranda	39100 AUD pp
Midship Veranda	45500 AUD pp
Medallion	46200 AUD pp
Silver	64600 AUD pp
Royal 1 Bedroom	68800 AUD pp
Grand 1 Bedroom	78300 AUD pp
Owner 1 Bedroom	99500 AUD pp
Royal 2 Bedroom	104000 AUD pp
Grand 2 Bedroom	113500 AUD pp
Owner 2 Bedroom	128500 AUD pp

### 04-Dec-2027 to 20-Dec-2027

Vista	31200 AUD pp
Veranda	38200 AUD pp
Midship Veranda	42000 AUD pp
Medallion	56500 AUD pp
Silver	58300 AUD pp
Royal 1 Bedroom	64000 AUD pp
Grand 1 Bedroom	71400 AUD pp
Owner 1 Bedroom	78900 AUD pp
Royal 2 Bedroom	98400 AUD pp
Grand 2 Bedroom	105800 AUD pp
Owner 2 Bedroom	107000 AUD pp