

# Wild Earth Travel

*Small Ships, Big Adventures*

[wildearth-travel.com](http://wildearth-travel.com)

[info@wildearth-travel.com](mailto:info@wildearth-travel.com)

## 12 DAYS LUXURY ANTARCTICA EXPEDITION - PUERTO WILLIAMS TO PUERTO WILLIAMS

Antarctica is the most alien place on Earth. It is truly like walking on another planet; its agelessness and mysteriousness has captivated explorers for centuries. Now it is your turn to discover this white continent during this 10-day trip departing from Puerto Williams. After traversing the legendary Drake Passage, get ready for five days of exploration and adventure that will see you fascinated by the wildlife, history and landscapes of this amazing place.

\_Some departures may have slightly modified itineraries. Please confirm the itinerary with an Expedition Specialist.\_



### ITINERARY

Days 0 - 1 - Pre Cruise & Puerto Williams

\_\*\*Pre Cruise Benefits\*\*\_

\_\*\*Hotel\*\*\_

\_\*\*Charter flights\*\*\_

Puerto Williams is a Chilean city located on Navarino Island on the southern

Wild Earth Travel

*Small Ships, Big Adventures*

0800 945 3327 (within New Zealand) | +64 (0) 3 365 1355 | 1800 107 715 (within Australia)

[info@wildearth-travel.com](mailto:info@wildearth-travel.com) | [wildearth-travel.com](http://wildearth-travel.com)



# Wild Earth Travel

*Small Ships, Big Adventures*



[wildearth-travel.com](http://wildearth-travel.com)

[info@wildearth-travel.com](mailto:info@wildearth-travel.com)

shores of the Beagle Channel. It claims to be the "southernmost city in the world", however owing to its small size - 2500 residents approximately - the much larger Argentinean city of Ushuaia, which sits on the northern side of the same channel, also claims that title. The surrounding scenery is magnificent. The wild windswept mountains rise above the tree line and are regularly dusted with snow. The city itself has the dramatic backdrop called "Dientes de Navarino" (literally "teeth of Navarino"), which rival the famous Torres del Paine further to the north. The area was originally used by the Yaghan people, hunter-gatherers who despite enduring the harsh regional climate, could not weather the arrival of Europeans. The current city was established as a naval base in 1953 and honours the British-Chilean naval commander John Williams Wilson of the 16th century. Initially it served to protect territorial possessions and fishing rights of the area, as well as offering logistical support to Antarctic bases. More recently it has become a departure point for scientific and tourism trips to the Antarctic region. In contrast to the bustle and traffic of a very commercial Ushuaia, Puerto Williams offers a quieter, more relaxed experience. It charms the visitor with a small village feel, complete with rustic buildings and the homely smell of drifting wood smoke. A haven of peace at the end of the world.

## Days 2 - 3 - Drake Passage

Sailing the legendary Drake Passage is an experience that few are ever lucky enough to experience. The southern tip of the Americas already feels like a wild enough environment - but the sensation of watching the distant cliffs of the peninsular known as the 'End of the World' fade into the horizon, is one that's equal parts epic, eerie and magical. Set sail, to slowly drop off the bottom of the map from Cape Horn, and voyage on an expedition down into the icy underworld of Antarctica. Drake Passage is an extraordinary voyage of romantic ocean faring legend, as you aim for Antarctica's icy realm. On arrival, skyscraper sized icebergs salute you, as you traverse the waters of this continent where snow and ice dwelling creatures like penguins and whales roam undisturbed. Your first sight of this most-unexplored place will most likely be the South Shetland Islands. Walk in the footsteps of some of history's greatest and bravest explorers as you explore famed, snow-covered landmasses like Elephant and Deception Island. If the journey across Drake Passage sounds daunting, don't worry - even in rough seas you're never alone, and will often be accompanied on this spine-tingling adventure by soaring albatrosses and maybe even a protective pod of humpbacks and hourglass dolphins or two. Converging warm and cool ocean currents attract some spectacular animal life to the passage. If this is your first visit to this magical continent, you'll also want to familiarise yourself with our blog for first timers to Antarctica.

## Day 4 - Antarctic Sound

Few voyages ignite the imagination like a journey down to one of the planet's most remote, extreme and enchanting wilderness, Antarctica. An adventure in its purest form, only a handful of people will ever be lucky enough to experience the majestic beauty of these monochrome landscapes first-hand. The Antarctic Sound will be one of your first encounters of this whitewash kingdom, located at the northerly tip of the Antarctic Peninsula - which sprawls up like a tentacle towards Tierra del Fuego, South America's most southerly point, otherwise known as the 'End of the World'. Taking its name from the first ship to brave the passageway between the peninsular and the Joinville Island groups back in 1902, the Sound is a raw, sensory assault of imposing iceberg slabs, broken away from the disintegrating Larsen Ice Shelf. Come face-to-face with stadium-sized islands of ice and meet the extraordinary birdlife that call this whitewash kingdom home. Watch on, as colonies of Gentoo penguins hop around, and cape petrels sweep overhead, as the continent's unique wildlife thrives around you. If you're planning your first venture into Antarctica, you'll want to brush up on your photography skills in advance, to capture this unforgiving continent in all of its unrestrained glory. Read our blog for tips on how to ensure that your photos do justice to the adventure of a lifetime.

## Days 5 - 7 - Antarctic Peninsula

The Antarctic Peninsula unravels upwards towards South America, reaching out a beckoning finger to the adventurous, who dare to explore this untamed realm. Stretching up from the heart of the world's southernmost continent, the Antarctic Peninsula lies a mere 620 mile from Tierra del Fuego and, for many, offers a spectacular first taste of the snow-blanketed landscapes and colossal ice sculptures, which make up Earth's least-explored continent. Unseen by humans until 1820 - a blink of an eye ago in relative terms - this is an adventure sure to make your hairs stand on end, as you experience the thrill of the truly unknown and extraordinary. The vast peninsula is sprinkled with research bases, which are at the frontline of human scientific endeavour, pushing to study and understand this unique landscape, its exceptional wildlife, and the impact that humans are having on this pristine continent. Witness cathedral-sized icebergs up close, and blue-hued glaciers, slowly slipping from imposing locations like Hope Bay. Blanched mountain peaks cover the peninsula, and you'll find thousands of adorable Adelie penguin pairs thriving undisturbed in this peninsula's unique setting.

## Day 8 - South Shetland Islands



Wild Earth Travel

*Small Ships, Big Adventures*

0800 945 3327 (within New Zealand) | +64 (0) 3 365 1355 | 1800 107 715 (within Australia)

[info@wildearth-travel.com](mailto:info@wildearth-travel.com) | [wildearth-travel.com](http://wildearth-travel.com)



# Wild Earth Travel

*Small Ships, Big Adventures*

[wildearth-travel.com](http://wildearth-travel.com)

[info@wildearth-travel.com](mailto:info@wildearth-travel.com)

The ice-coated Antarctic Peninsula forms perhaps the most accessible region of mainland Antarctica, lying a mere 480-miles away from South America, across the fabled waters of Drake's Passage. Lying close to the northwestern tip of the Antarctic Peninsula, separated by the Bransfield Strait, the South Shetland Islands fall under the jurisdiction of the Antarctic Treaty, suspending claims on their sovereignty. Several countries maintain research bases here, and with plump elephant seals, and crowds of Gentoo, Chinstrap and Adeline Penguins also calling the islands home, it can even feel a little crowded at times. King George Island is the largest and most hospitable island, hosting the majority of the research stations - some of which are populated all-year-round by tiny, hardy crews. Don't be fooled though, these islands offer extraordinary adventure in one of the most remote locations on earth. The triple peaks of Mount Foster tower above the archipelago, and you'll feel your heart pumping a little quicker, as you sail into the core of Deception Island's magnificent collapsed volcano caldera. Hike the lunar landscapes within, and even dip into the improbably warm, geothermally-heated waters of Pendulum Cove. Elephant Island, meanwhile, is written deep into the annals of Antarctic expedition legend, as the site where Ernest Shackleton and the stricken crew of the Endurance miraculously survived a harsh Antarctic winter, in 1916.

## Day 9 - Drake Passage

Sailing the legendary Drake Passage is an experience that few are ever lucky enough to experience. The southern tip of the Americas already feels like a wild enough environment - but the sensation of watching the distant cliffs of the peninsula known as the 'End of the World' fade into the horizon, is one that's equal parts epic, eerie and magical. Set sail, to slowly drop off the bottom of the map from Cape Horn, and voyage on an expedition down into the icy underworld of Antarctica. Drake Passage is an extraordinary voyage of romantic ocean faring legend, as you aim for Antarctica's icy realm. On arrival, skyscraper sized icebergs salute you, as you traverse the waters of this continent where snow and ice dwelling creatures like penguins and whales roam undisturbed. Your first sight of this most-unexplored place will most likely be the South Shetland Islands. Walk in the footsteps of some of history's greatest and bravest explorers as you explore famed, snow-covered landmasses like Elephant and Deception Island. If the journey across Drake Passage sounds daunting, don't worry - even in rough seas you're never alone, and will often be accompanied on this spine-tingling adventure by soaring albatrosses and maybe even a protective pod of humpbacks and hourglass dolphins or two. Converging warm and cool ocean currents attract some spectacular animal life to the passage. If this is your first visit to this magical

continent, you'll also want to familiarise yourself with our blog for first timers to Antarctica.

## Days 10 - 11 - Puerto Williams & Post Cruise

Puerto Williams is a Chilean city located on Navarino Island on the southern shores of the Beagle Channel. It claims to be the "southernmost city in the world", however owing to its small size - 2500 residents approximately - the much larger Argentinean city of Ushuaia, which sits on the northern side of the same channel, also claims that title. The surrounding scenery is magnificent. The wild windswept mountains rise above the tree line and are regularly dusted with snow. The city itself has the dramatic backdrop called "Dientes de Navarino" (literally "teeth of Navarino"), which rival the famous Torres del Paine further to the north. The area was originally used by the Yaghan people, hunter-gatherers who despite enduring the harsh regional climate, could not weather the arrival of Europeans. The current city was established as a naval base in 1953 and honours the British-Chilean naval commander John Williams Wilson of the 16th century. Initially it served to protect territorial possessions and fishing rights of the area, as well as offering logistical support to Antarctic bases. More recently it has become a departure point for scientific and tourism trips to the Antarctic region. In contrast to the bustle and traffic of a very commercial Ushuaia, Puerto Williams offers a quieter, more relaxed experience. It charms the visitor with a small village feel, complete with rustic buildings and the homely smell of drifting wood smoke. A haven of peace at the end of the world.

\_\*\*Post Cruise Benefits\*\*\_

\_\*\*Charter flights\*\*\_

### Please Note:

Itineraries are subject to change.



Wild Earth Travel

*Small Ships, Big Adventures*

0800 945 3327 (within New Zealand) | +64 (0) 3 365 1355 | 1800 107 715 (within Australia)

[info@wildearth-travel.com](mailto:info@wildearth-travel.com) | [wildearth-travel.com](http://wildearth-travel.com)

# Wild Earth Travel

*Small Ships, Big Adventures*



[wildearth-travel.com](http://wildearth-travel.com)

[info@wildearth-travel.com](mailto:info@wildearth-travel.com)

## YOUR SHIP: SILVER CLOUD

<b>YOUR SHIP:</b>	<b>Silver Cloud</b>
<b>VESSEL TYPE:</b>	<b>Luxury Expedition</b>
<b>LENGTH:</b>	<b>157 m</b>
<b>PASSENGER CAPACITY:</b>	<b>200/260</b>
<b>BUILT/REFURBISHED:</b>	<b>1994 Refurbished &amp; Rebranded</b>



Silver Cloud delivers one of the most personalised expedition experiences at sea, blending ultra-luxury with true adventure. As Silversea's first crossover ship, she's built for both comfort and exploration, offering large ocean-facing suites--80% with verandas--and an impressive 1:1 crew-to-guest ratio. With 20 Zodiacs and 10 kayaks, guests enjoy unparalleled access to remote locations, while expert-led excursions ensure meaningful encounters with nature and culture alike. From the icy reaches of Antarctica to the sun-kissed South Pacific, Silver Cloud brings the remarkable within easy reach.

On board, refined living continues with four elegant dining venues, including French fine dining at La Dame and authentic Italian at La Terrazza. Relax in stylish public areas such as the Panorama Lounge or Connoisseur's Corner, indulge in world-class spa treatments, or learn more about your destinations from passionate experts in the Explorer Lounge. Whether you're cruising the Kimberley or the Chilean fjords, Silver Cloud offers a sophisticated base for discovering the far corners of the world in sublime comfort.

Wild Earth Travel

*Small Ships, Big Adventures*

0800 945 3327 (within New Zealand) | +64 (0) 3 365 1355 | 1800 107 715 (within Australia)

[info@wildearth-travel.com](mailto:info@wildearth-travel.com) | [wildearth-travel.com](http://wildearth-travel.com)

# Wild Earth Travel

*Small Ships, Big Adventures*

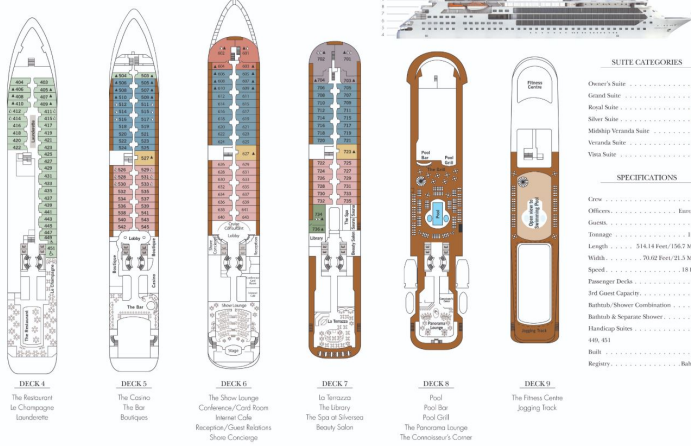


wildeath-travel.com

info@wildeath-travel.com

## INSIDE YOUR SHIP

Silver Cloud – DECK PLAN



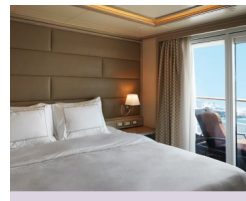
### Classic Veranda



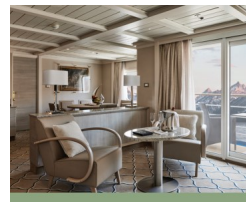
### Grand 1 Bedroom



### Medallion



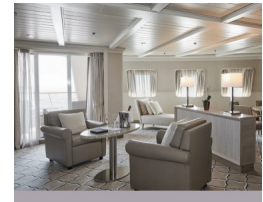
### Owner 1 Bedroom



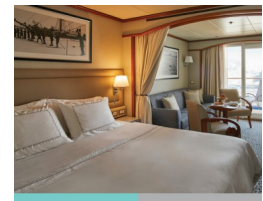
### Deluxe Veranda



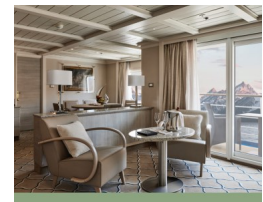
### Grand 2 Bedroom



### Midship Veranda



### Owner 2 Bedroom



# Wild Earth Travel

*Small Ships, Big Adventures*

[wildearth-travel.com](http://wildearth-travel.com)

[info@wildearth-travel.com](mailto:info@wildearth-travel.com)

## PRICING

### 11-Dec-2026 to 22-Dec-2026

Vista	25600 AUD pp
Medallion	46800 AUD pp
Silver	49600 AUD pp
Royal 1 Bedroom	53700 AUD pp
Grand 1 Bedroom	58100 AUD pp
Owner 1 Bedroom	63200 AUD pp
Royal 2 Bedroom	77600 AUD pp
Grand 2 Bedroom	82000 AUD pp
Owner 2 Bedroom	86200 AUD pp
Midship Veranda	0 pp
Veranda	0 pp

Vista	29900 AUD pp
Veranda	32300 AUD pp
Midship Veranda	33700 AUD pp
Medallion	44700 AUD pp
Silver	50100 AUD pp
Royal 1 Bedroom	53800 AUD pp
Grand 1 Bedroom	60400 AUD pp
Owner 1 Bedroom	66000 AUD pp
Royal 2 Bedroom	82900 AUD pp
Grand 2 Bedroom	89500 AUD pp
Owner 2 Bedroom	92900 AUD pp

### 07-Jan-2027 to 18-Jan-2027

Vista	29900 AUD pp
Veranda	32300 AUD pp
Midship Veranda	33700 AUD pp
Medallion	44700 AUD pp
Silver	50100 AUD pp
Royal 1 Bedroom	53800 AUD pp
Grand 1 Bedroom	60400 AUD pp
Owner 1 Bedroom	66000 AUD pp
Royal 2 Bedroom	82900 AUD pp
Grand 2 Bedroom	89500 AUD pp
Owner 2 Bedroom	92900 AUD pp

### 01-Feb-2027 to 12-Feb-2027

Wild Earth Travel  
*Small Ships, Big Adventures*

0800 945 3327 (within New Zealand) | +64 (0) 3 365 1355 | 1800 107 715 (within Australia)

[info@wildearth-travel.com](mailto:info@wildearth-travel.com) | [wildearth-travel.com](http://wildearth-travel.com)

# Wild Earth Travel

*Small Ships, Big Adventures*

[wildearth-travel.com](http://wildearth-travel.com)

[info@wildearth-travel.com](mailto:info@wildearth-travel.com)

## PRICING

### 24-Oct-2027 to 04-Nov-2027

Vista	24100 AUD pp
Medallion	41100 AUD pp
Silver	42300 AUD pp
Royal 1 Bedroom	45500 AUD pp
Grand 1 Bedroom	50000 AUD pp
Owner 1 Bedroom	54400 AUD pp
Royal 2 Bedroom	68500 AUD pp
Grand 2 Bedroom	73000 AUD pp
Owner 2 Bedroom	76100 AUD pp
Veranda	0 pp
Midship Veranda	0 pp

### 19-Dec-2027 to 30-Dec-2027

Vista	24900 AUD pp
Veranda	29400 AUD pp
Midship Veranda	32100 AUD pp
Medallion	46600 AUD pp
Silver	47900 AUD pp
Royal 1 Bedroom	52400 AUD pp
Grand 1 Bedroom	57900 AUD pp
Owner 1 Bedroom	63700 AUD pp
Royal 2 Bedroom	78900 AUD pp
Grand 2 Bedroom	84400 AUD pp
Owner 2 Bedroom	86100 AUD pp

### 10-Jan-2028 to 21-Jan-2028

Vista	28500 AUD pp
Veranda	31500 AUD pp
Midship Veranda	33800 AUD pp
Medallion	46900 AUD pp
Silver	48200 AUD pp
Royal 1 Bedroom	52200 AUD pp
Grand 1 Bedroom	57500 AUD pp
Owner 1 Bedroom	62600 AUD pp
Royal 2 Bedroom	80600 AUD pp
Grand 2 Bedroom	85900 AUD pp
Owner 2 Bedroom	88300 AUD pp

Wild Earth Travel

*Small Ships, Big Adventures*

0800 945 3327 (within New Zealand) | +64 (0) 3 365 1355 | 1800 107 715 (within Australia)

[info@wildearth-travel.com](mailto:info@wildearth-travel.com) | [wildearth-travel.com](http://wildearth-travel.com)

# Wild Earth Travel

*Small Ships, Big Adventures*

[wildearth-travel.com](http://wildearth-travel.com)

[info@wildearth-travel.com](mailto:info@wildearth-travel.com)

## PRICING

### 07-Feb-2028 to 18-Feb-2028

Vista	28100 AUD pp
Veranda	31000 AUD pp
Midship Veranda	33400 AUD pp
Medallion	47100 AUD pp
Silver	48400 AUD pp
Royal 1 Bedroom	52200 AUD pp
Grand 1 Bedroom	57500 AUD pp
Owner 1 Bedroom	62800 AUD pp
Royal 2 Bedroom	80100 AUD pp
Grand 2 Bedroom	85400 AUD pp
Owner 2 Bedroom	88100 AUD pp

Classic Veranda	27400 AUD pp
Superior Veranda	28200 AUD pp
Deluxe Veranda	29100 AUD pp
Premium Veranda	29600 AUD pp
Silver	48100 AUD pp
Grand 1 Bedroom	90600 AUD pp
Owner 1 Bedroom	99100 AUD pp

### 17-Feb-2028 to 29-Feb-2028

Vista	25100 AUD pp
Veranda	29400 AUD pp
Midship Veranda	31800 AUD pp
Medallion	45100 AUD pp
Silver	46500 AUD pp
Royal 1 Bedroom	50300 AUD pp
Grand 1 Bedroom	55600 AUD pp
Owner 1 Bedroom	60700 AUD pp
Royal 2 Bedroom	76800 AUD pp
Grand 2 Bedroom	82100 AUD pp
Owner 2 Bedroom	83300 AUD pp

### 05-Mar-2028 to 16-Mar-2028

Wild Earth Travel  
*Small Ships, Big Adventures*

0800 945 3327 (within New Zealand) | +64 (0) 3 365 1355 | 1800 107 715 (within Australia)

[info@wildearth-travel.com](mailto:info@wildearth-travel.com) | [wildearth-travel.com](http://wildearth-travel.com)